

Reliable current supply, if the plug in is missing!

Einhell®

NEW GENERATION

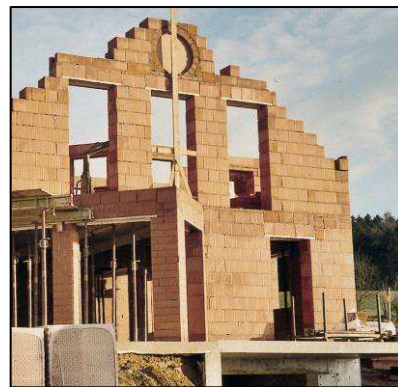
Tank capacity 15 l



This "power station" supplies energy and provides security.

Power will be available whenever it is needed. Power failures or insufficient current supply are no longer a problem; whether during camping, at building sites, in homes or cottages, on boats or in the garden. **This equipment can be used nearly everywhere, and, with its continuous power supply of 2,000 Watt, provides sufficient power for many applications. The large 15-litre tank ensures continuous operation for eleven hours at 2/3 load.** The power generator is powered by a high-quality 4-stroke engine and is equipped with an overload switch.

Power: 4.77kW / 6.5 HP



STE 2000 Power Generator

Logistic Information:

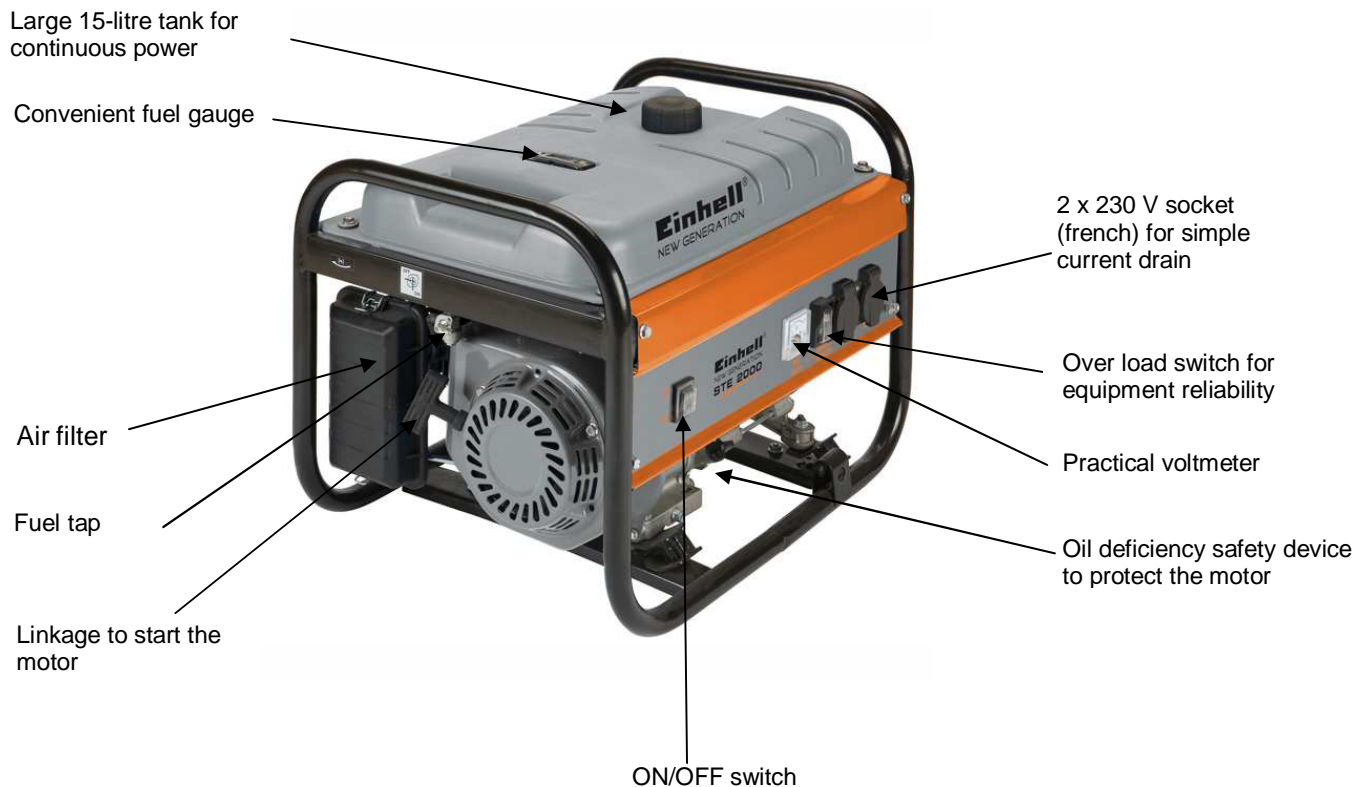
Type:	STE 2000	Sales unit:	1 pc
Art.-No.:	41.523.72	20``:	180 pcs
Ident-No.:	01017	40``:	380 pcs
Bar Code:	4006825 539363	40`` HC:	475 pcs
Packaging:	635 x 445 x 480 mm	Weight:	41,2 kgs (gross)



Reliable current supply, if the plug in is missing!

Einhell®

NEW GENERATION



Features:

- **Powerful 4-stroke drive motor**
- **Large 15-litre tank for continuous power**
- Oil deficiency safety device to protect the motor
- Over load switch for equipment reliability
- 2 x 230 V socket for simple current drain
- Practical voltmeter
- Convenient fuel gauge
- Linkage to start the motor

Technical Data:

- Generator: Synchronous
- Continuous Power(S1): 1 x 2,000 W
- Max. Power(S2 5 min): 1 x 2,200 W
- Nominal current: 2 x 230 V / 1 ~
- Frequency: 50 Hz
- Type: 1 Zylinder, 4-Takt air-cooled
- Cylinder capacity: 196 cm³
- Max. Motor power: 4,77 KW / 6,5 PS
- Fuel: Normal lead free
- Tank capacity: 15 l
- Running time at 2/3 Last: Approx.: 11 hours
- Noise level: 95 dB(A)

Logistic Information:

Type:	STE 2000	Tool:	Power Generator
Art.-No.:	41.523.72	Sales unit:	1 pc
Ident-No.:	01017	20`:	180 pcs
Bar Code:	4006825 539363	40`:	380 pcs
Packaging:	635 x 445 x 480 mm	40`HC:	475 pcs
		Weight:	41,2 kgs (gross)

