

Patio Cleaner

# Ozito

## PATIO CLEANER

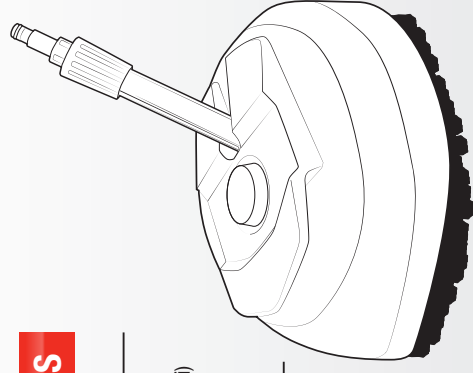
### LARGE CLEANING RADIUS

#### INSTRUCTION MANUAL

##### SPECIFICATIONS

Max. Permissible Pressure: 17MPa (2465psi)  
 Max. Operating Temperature: 60°C  
 Suits Ozito Pressure Washer: HPW-2030  
 Weight: 0.66kg

ozito.com.au



## ELECTRICAL SAFETY

**WARNING!** When using electric machines basic safety precautions should always be followed to reduce the risk of fire, electric shock and personal injury.

- Read the whole manual carefully and make sure you know how to switch the machine on in an emergency, before operating the machine. Save these instructions and other documents supplied with this machine for future reference.
- This appliance is not intended for use by persons (including children) with reduced physical, sensory or mental capabilities, or lack of experience and knowledge, unless they have been given supervision or instruction concerning use of the appliance by a person responsible for their safety. Children should be supervised to ensure that they do not play with the appliance.
- Always check that the power supply corresponds to the voltage on the rating plate.



## GENERAL POWER TOOL SAFETY WARNINGS

**WARNING!** Read all safety warnings, instructions, illustrations and specifications provided with this machine. Failure to follow all instructions listed below may result in electric shock, fire and/or serious injury.

Save all warnings and instructions for future reference.

The term "machine" in the warnings refers to your mains-operated (corded) machine or battery-operated (cordless) machine.

- Work area safety**
  - Keep work area clean and well lit. Cluttered or dark areas invite accidents.
  - Do not operate machines in explosive atmospheres, such as in the presence of flammable liquids, gases or dust. Machines create sparks which may ignite the dust or fumes.
  - Keep children and bystanders away while operating a machine. Distractions can cause you to lose control.
- Electrical safety**
  - Machine plugs must match the outlet. Never modify the plug in any way. Do not use any adapter plugs with earthed (grounded) machines. Unmodified plugs and matching outlets will reduce risk of electric shock.
  - Avoid body contact with earthed or grounded surfaces, such as pipes, radiators, ranges and refrigerators. There is an increased risk of electric shock if your body is earthed or grounded.
  - Do not expose machines to rain or wet conditions. Water entering a machine will increase the risk of electric shock.
  - Do not abuse the cord. Never use the cord for carrying, pulling or unplugging the machine. Keep cord away from heat, oil, sharp edges or moving parts. Damaged or entangled cords increase the risk of electric shock.
  - When operating a machine outdoors, use an extension cord suitable for outdoor use. Use of a cord suitable for outdoor use reduces the risk of electric shock.
  - If operating a machine in a damp location is unavoidable, use a residual current device (RCD) protected supply. Use of an RCD reduces the risk of electric shock.
- Personal safety**
  - Stay alert, watch what you are doing and use common sense when operating a machine. Do not use a machine while you are tired or under the influence of drugs, alcohol or medication. A moment of inattention while operating machines may result in serious personal injury.
  - Use personal protective equipment. Always wear eye protection. Protective equipment such as a dust mask, non-skid safety shoes, hard hat or hearing protection used for appropriate conditions will reduce personal injuries.
  - Prevent unintentional starting. Ensure the switch is in the off-position before connecting to power source and/or battery pack, picking up or carrying the machine. Carrying machines with your finger on the switch or energising machines that have the switch on invites accidents.



## PATIO CLEANER WARNINGS

**WARNING!** The appliance is not to be used by persons (including children) with reduced physical, sensory or mental capabilities, or lack of experience and knowledge, unless they have been given supervision or instruction.

Young children should be supervised to ensure that they do not play with the appliance.

- This accessory is only intended for use with Ozito HPW-2030 Pressure Washer. Do not use with any other pressure washers.
- Do not place your hand or any body part under the cleaner head when the patio brush is operating.

- The power supply for this product should be protected by a residual current device (rated at 30mA or less). A residual current device reduces the risk of electric shock.
- Inspect machine cords periodically and if damaged have them replaced by a certified electrician.

Always use an approved extension lead suitable for the power input of the machine. Before use, inspect the extension lead for signs of damage, wear and ageing. Replace the extension lead if damaged or defective.

- When using an extension lead on a reel, always unwind the lead completely. Do not use a damaged extension lead, or an extension lead that is not suitable for the power input of the machine. Failure to do so may result in a risk of fire and electric shock and will void the warranty.

Remove any adjusting key or wrench before turning the machine on. A wrench or a key left attached to a rotating part of the machine may result in personal injury.

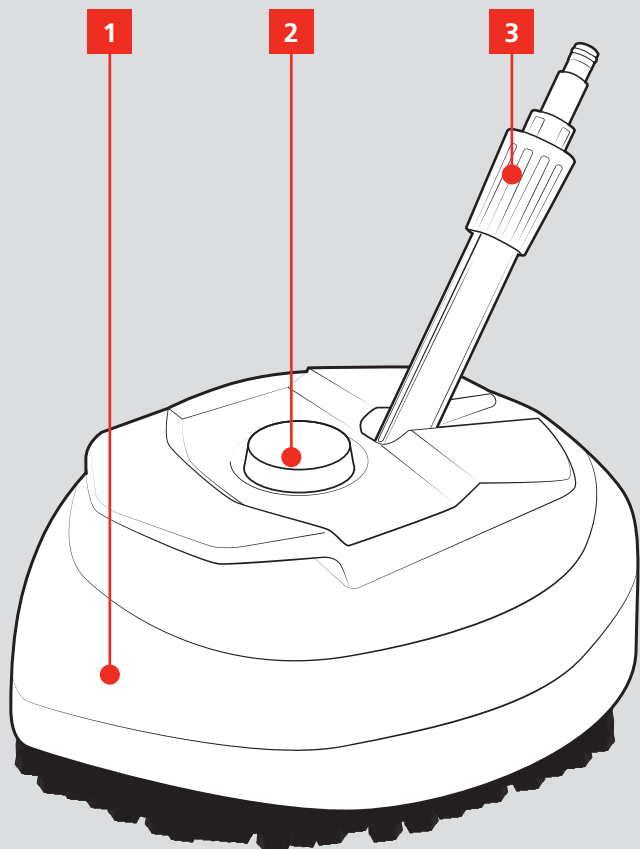
- Do not overreach. Keep proper footing and balance at all times. This enables better control of the machine in unexpected situations.
- Dress properly. Do not wear loose clothing or jewellery. Keep your hair and clothing away from moving parts. Loose clothes, jewellery or long hair can be caught in moving parts.
- If devices are provided for the connection of dust extraction and collection facilities, ensure these are connected and properly used. Use of dust collection can reduce dust-related hazards.
- Do not let familiarity gained from frequent use of machines allow you to become complacent and ignore machine safety principles. A careless action can cause severe injury within a fraction of a second.
- Machine use and care**
  - Do not force the machine. Use the correct machine for your application. The correct machine will do the job better and safer at the rate for which it was designed.
  - Do not use the machine if the switch does not turn on and off. Any machine that cannot be controlled with the switch is dangerous and must be repaired.
  - Disconnect the plug from the power source and/or remove the battery pack, if detachable, from the machine before making any adjustments, changing accessories, or storing machines. Such preventive safety measures reduce the risk of starting the machine accidentally.
  - Store idle machines out of the reach of children and do not allow persons unfamiliar with the machine or these instructions to operate the machine. Machines are dangerous in the hands of untrained users.
  - Maintain machines and accessories. Check for misalignment or binding of moving parts, breakage or parts and any other condition that may affect the machine's operation. If damaged, have the machine repaired before use. Many accidents are caused by poorly maintained machines.
  - Keep cutting machines sharp and clean. Properly maintained cutting machines with sharp cutting edges are less likely to bind and are easier to control.
  - Use the machine, accessories and machine bits etc. in accordance with these instructions, taking into account the working conditions and the work to be performed. Use of the machine for operations different from those intended could result in a hazardous situation.
  - Keep handles and grasping surfaces dry, clean and free from oil and grease. Slippery handles and grasping surfaces do not allow for safe handling and control of the machine in unexpected situations.
- Service**
  - Have your machine serviced by a qualified repair person using only identical replacement parts. This will ensure that the safety of the machine is maintained.

- Do not direct the jet against yourself or others in order to clean clothes or foot-wear.
- High pressure jets can be dangerous if subject to misuse. The jet must not be directed at persons, animals, live electrical equipment or the appliance itself.
- Do not run over free standing corners
- As high pressure can harm a delicate surface, it is recommended to test on a small area to see if the surface can stand the high pressure.
- Ensure the machine is turned off and disconnected from power supply before replacing the nozzles.

# KNOW YOUR PRODUCT

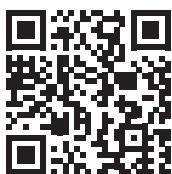
## PATIO CLEANER

1. Patio Cleaner Head
2. Spray Strength Dial
3. Brush Handle



## ONLINE MANUAL

Scan this QR Code with your mobile device to take you to the online manual.



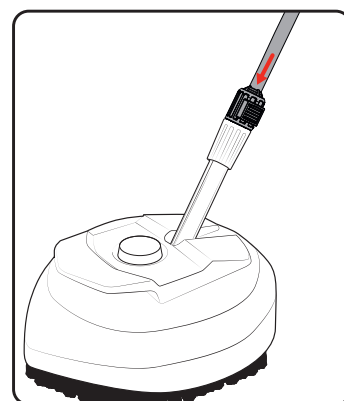
# SETUP & PREPARATION

## 1. ASSEMBLY

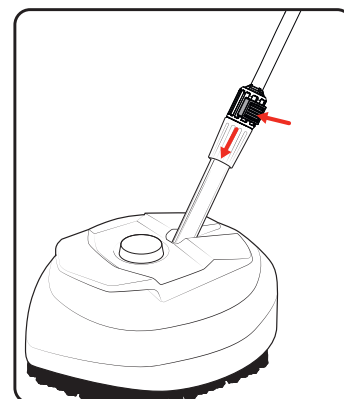
**WARNING!** ENSURE THE MACHINE IS SWITCHED OFF AND DISCONNECTED FROM THE POWER SOURCE BEFORE PERFORMING ANY OF THE FOLLOWING OPERATIONS.

### Attaching The Patio Cleaner

1. Attach your extension lance and pressure washer spray gun as normal.
2. Connect the extension lance and spray gun assembly to the brush handle until it “clicks” to lock in place.



**Note:** To disconnect the patio cleaner head, press and hold the quick-release on the extension lance and pull out the patio cleaner head.



# OPERATION

## 2. CONTROLS

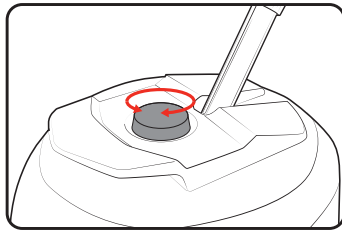
### Adjusting the Spray Strength

The max. spray setting can be used for hard surfaces like concrete and stone.

The min. setting is more suitable for softer surfaces such as timber decking.

**Note:** Always test the setting on a small area to see if the surface can withstand the pressure.

1. Turn the setting control dial to the desired setting.



2. Move the patio brush gently over the surface to be cleaned and allow the machine to do the work.

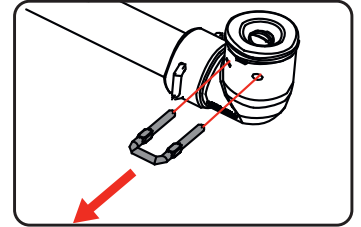
# MAINTENANCE



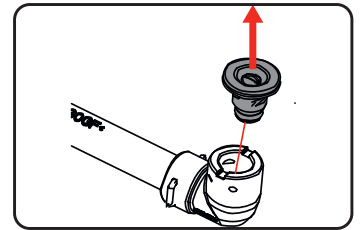
**WARNING!** BEFORE CLEANING YOUR MACHINE OR CARRYING OUT ANY MAINTENANCE PROCEDURE, MAKE SURE IT IS DISCONNECTED FROM THE POWER SUPPLY TO PREVENT INJURY AND/OR ACCIDENTS.

### Cleaning The Nozzle

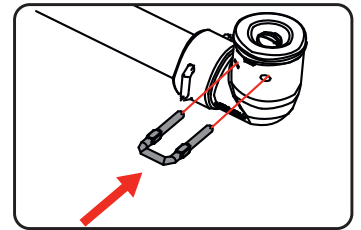
1. Remove the U-Pin on the brush.



2. Pull out the nozzle then clean it with the cleaning needle (supplied with the HPW-2030) and rinse with water.



3. Reinsert the nozzle and U-Pin.



## DESCRIPTION OF SYMBOLS








### Cleaning

Clean the appliance regularly with a damp cloth. Do not use cleaning agents or solvents; these may be aggressive to the plastic parts in the appliance. Ensure that no water can get into the interior of the appliance.

### Storage

Disconnect the patio cleaner from the pressure washer. Ensure it is clean & dry.

Store it in a dry location which is not accessible to unauthorised persons.

psi	Pounds per square inch	MPa	Megapascals
	Machine not suitable for connection to the potable water mains		Wear gloves
	Wear Breathing Protection		Wear eye protection
	Read Instruction Manual		Warning
	Warning! High pressure jets can be dangerous if not used properly. Do not direct the jet at persons, animals, live electrical equipment or the pressure washer itself.		

## CARING FOR THE ENVIRONMENT



Power tools and garden machinery that are no longer usable should not be disposed of with household waste but in an environmentally friendly way. Please recycle where facilities exist. Check with your local council authority for recycling advice.



Recycling packaging reduces the need for landfill and raw materials. Reuse of recycled material decreases pollution in the environment. Please recycle packaging where facilities exist. Check with your local council authority for recycling advice.

## SPARE PARTS

Spare parts can be ordered from the Special Orders Desk at your local Bunnings Warehouse.

For further information, or any parts not listed here, visit [www.ozito.com.au](http://www.ozito.com.au) or contact Ozito Customer Service:

Australia 1800 069 486

New Zealand 0508 069 486

E-mail: [enquiries@ozito.com.au](mailto:enquiries@ozito.com.au)