



Einhell

BLUE

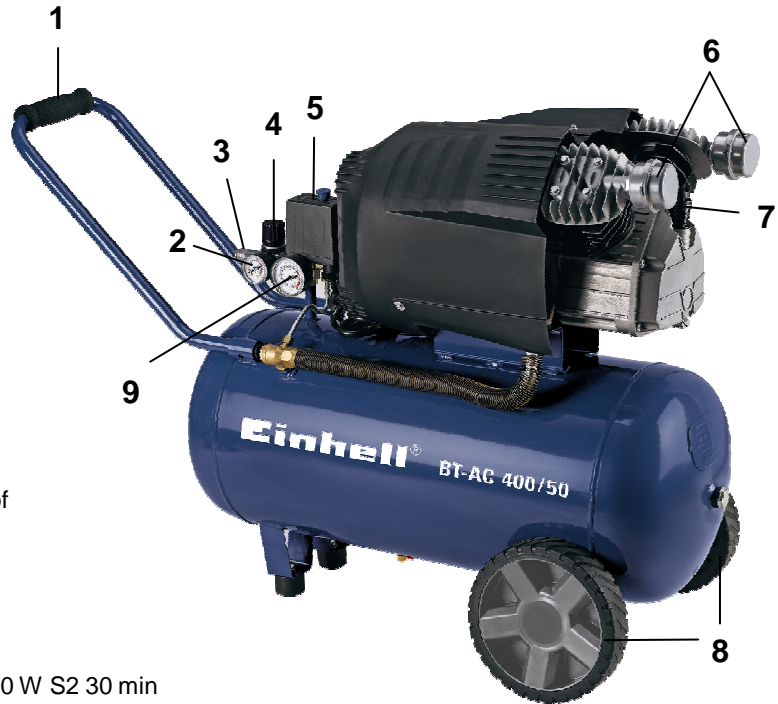
BT-AC 400/50 + accessory set Air compressor set

Art.-No. 40.102.56

Air compressor BT-AC 400/50

Features

- Transport handle (1)
- Pressure gauge (2) and quick-release coupling (3) for regulated working pressure
- Pressure reducer (4)
- Pressure switch (5)
- Safety valve
- Intake filter (6)
- Oil level control by dipstick (7)
- Drainage screw
- Big wheels for easy transport (8)
- Pressure gauge (9) and quick-release coupling for unregulated tank pressure
- Non-return valve
- Pump lubricated with oil
- 10 years warranty against rusting through of the tank



Technical Data

- Mains connection: 230 V ~ 50 Hz
- Motor rating: 2,400 W S1; 2,600 W S2 30 min
- Intake capacity: 400 l / min
- Output power: at 0 bar: 241 l/min
at 4 bar: 208 l/min
at 7 bar: 175 l/min
- Tank capacity (liters): 50 l
- Speed: 2,850 min⁻¹
- Operating pressure: max. 8 bar
- No. of cylinders: 2
- Product weight: 40.0 kg

Pneumatic Impact Wrench DSS 260/2

Technical Data

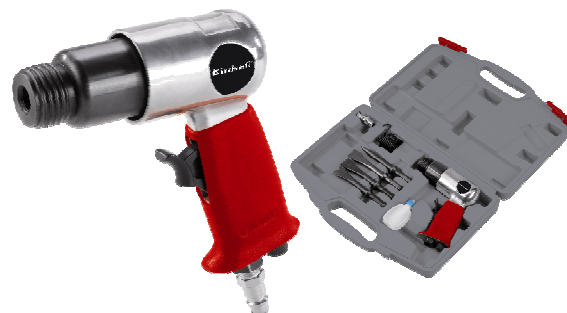
- Working pressure max.: 6.3 bar
- Release torque max.: 312 Nm
- Air consumption: approx. 300 l/min.
- Max. thread size: M 14
- Product weight: 2.2 kg



Pneumatic Chisel Hammer Kit DMH 250/2

Technical Data

- Working pressure max.: 6.3 bar
- Blow rate: 4,500/min
- Stroke: 44 mm
- Air consumption: approx. 115 l/min.
- Chisel holder: 9.8 mm (hexagon)
- Product weight: 1.2 kg



Pneumatic Stapler/Nailer Kit DTA 25/2

Technical Data

- Working pressure: max. 8.3 bar
- Air consumption: 0.66 l/shot
- Clamp width: 5.7 mm
- Clamp length: 13 – 40 mm
- Nail length: 10 – 50 mm
- Magazine capacity: approx. 100 pcs
- Product weight: 1.5 kg



Pneumatic Pin Grinder Kit DSL 250/2

Technical Data

- Working pressure max.: 6.3 bar
- Idle speed: 22,000 min⁻¹
- Air consumption: approx. 128 l/min.
- Product weight: 0.6 kg



Fabric tube, 15 m

Technical Data

- Length: 15 m
- Max. Operating pressure: 10 bar
- Hose nominal-Ø: 10 mm
- Product weight: 1.7 kg



Air Tool Set Profi 4 pcs

Technical Data

- Paint spray gun with gravity cup
 - Working pressure: 3 - 4 bar
 - Chamber volume: 0.6 l
- Spraying gun with suction cup
 - Working pressure: 3.5 bar
 - Chamber volume: 0.9 l
- Tyre inflator with pressure gauge
 - Working pressure: 0 - 8 bar
- Blow-out pistol
 - Working pressure: 3 - 8 bar
 - Product weight: 0.8 kg



Inflation Adapter set 8 pcs

Features

- Adapter for valve with inside diameter starting from 8 mm
- Adapter for outlet valves
- Adapter for screw valves
- Adapter for valves starting from 10 mm
- Connector for outlet valve, screw valve and valve adapter starting from 10 mm
- Adapter for valves starting from 5.5 to 9 mm
- Ball needle
- Valve adapter for bicycle tires



Air compressor set

- Net weight Kit: 52.6 kg
- Gross weight Kit: 58.0 kg
- Packing dimensions Kit: 800 x 365 x 910 mm
- Bar code: 4006825 586442
- Sales Unit: 1 pc