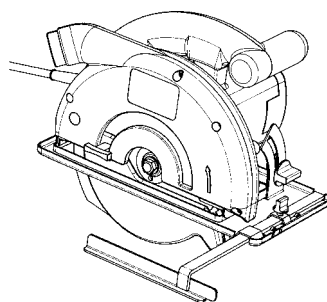




Operating Instructions
Electric hand circular saw

POWER
CRAFT®

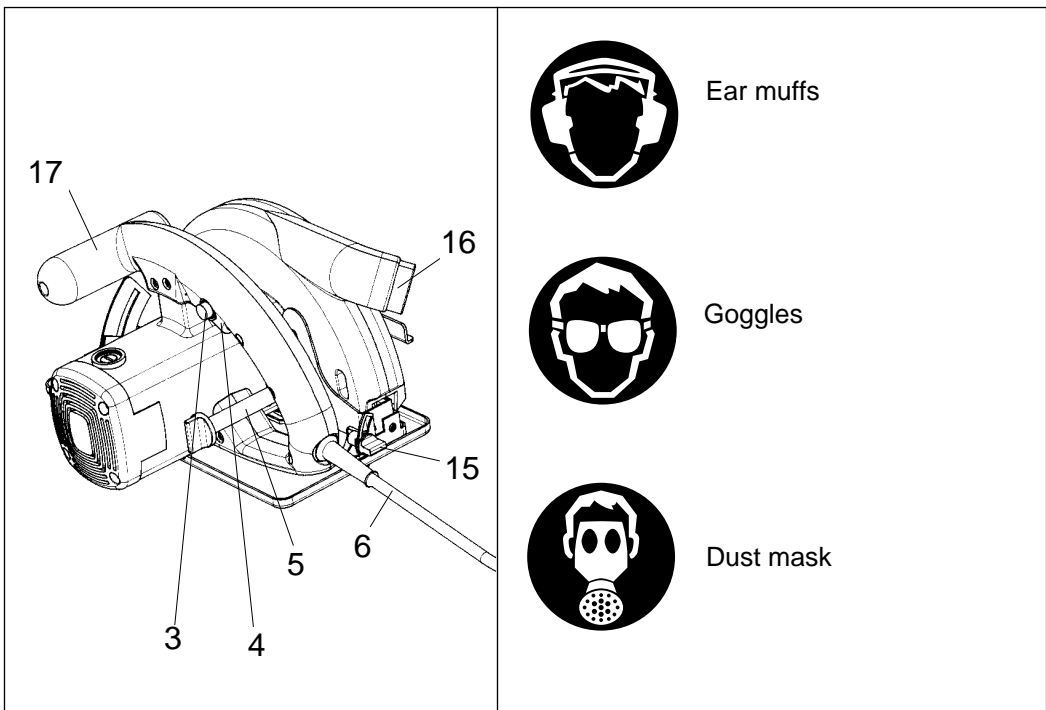
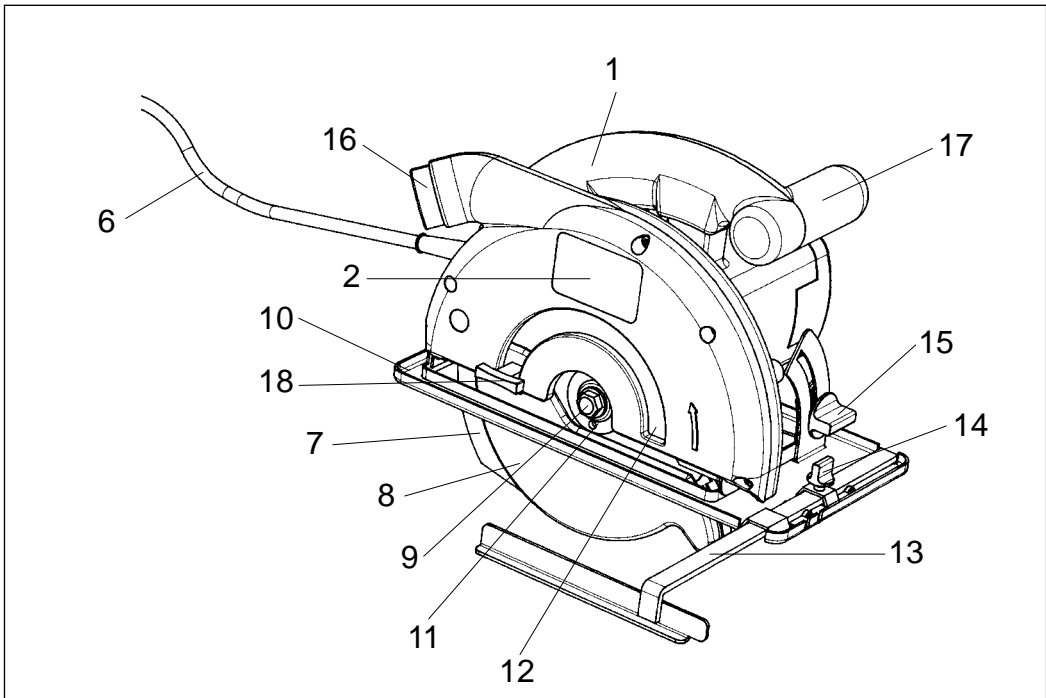


Art. No.: 43.306.53

ECS 180

GB Contents

Drawing	page 3
Description, technical data,	
Safety instructions	page 4
Operating and maintenance instructions	page 5-6
Replacement parts drawing	page 7
Replacement parts list	page 8
Declaration of EC conformity	page 9
Warranty certificate	page 10



Description

1. Handle
2. Nameplate
3. On/Off switch
4. Interlock button for On/Off switch
5. Lock screw for the depth of cut setting
6. Power cable
7. Riving knife
8. Hinged guard hood
9. Allen screw
10. Shoe
11. Flange
12. Saw blade
13. Parallel fence
14. Lock screw for the parallel fence
15. Lock screws for mitre cuts
16. Dust extractor connection
17. Additional handle
18. Actuator for the hinged guard hood

Please read these instructions carefully and pay particular attention to the safety regulations. Keep the instructions together with the circular saw.

Technical data

Voltage	230 V ~ 50 Hz
Power rating	1020 W
Idle speed	4000 rpm
Cutting depth at 0°	52 mm
Cutting depth at 45°	40 mm
Saw blade	160 mm dia.
Saw blade mount	20 mm dia.
Saw blade thickness	2,8 mm
Sound pressure level	LPA 98 dB(A)
Sound power level	LWA 101 dB(A)
Vibration a_w	3.2 m/s ²
Weight	4.8 kg
Dimensions	33 x 22.5 x 22 cm
Totally insulated	

Accessories supplied

Parallel fence

Applications

The Electric hand circular saw is designed for sawing straight cuts in wood, in materials similar to wood, and in plastics.

Safety regulations

- Adjust the riving knife so that it is no more than 5 mm from the tooth rim of the saw blade and its lowest point is not retracted more than 5 mm relative to the tooth rim.
- Do not use cracked or misshapen saw blades.
- Do not use saw blades made of high-alloy, high-speed steel (HSS).
- Never use saw blades which do not conform with the specifications quoted in these instructions.
- Make sure that all the moving parts of the blade guard work properly without jamming.
- Make sure that all devices which play a role in covering the saw blade are in proper working order.
- The riving knife must be properly adjusted and used at all times except for plunge-cuts.
- Do not use the saw near fumes or combustible liquids.
- Use only sharp blades and suitable accessories.
- Always pull the plug out of the socket before converting, cleaning or adjusting the saw.
- Keep the power cable safe from damage. Oil and acid can cause damage to the cable.
- Never use saw blades with plates that are thicker or with sets that are smaller than the thickness of the riving knife.
- Never remove the plug from the socket by pulling on the power cable and do not carry the saw by its cable.
- Have repairs carried out only by specialists.
- If you use a cable reel, the complete cable must be drawn off the reel. The conductor must have a minimum cross section of 1.5 mm². Maximum fuse rating 16 A.
- Secure all workpieces sufficiently and do not overload the machine.
- Wear suitable clothing and goggles and use a dust mask on dusty jobs.
- Wear ear muffs to protect your ears!
- For lengthy jobs on wood and when cutting materials which produce a great deal of dust, the circular saw should be connected to a suitable dust extractor (observe your country's regulations regarding wood dust extraction).

GB

Working with the electric hand circular saw

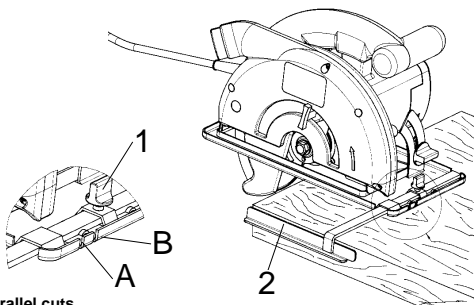
- Always hold the circular saw firmly.
- The hinged guard hood will be pushed back automatically by the workpiece.
- Never apply force! Advance the circular saw gently and steadily.
- The off-cut piece should be to the right of the circular saw so that the wide part of the base plate is supported over its entire surface.
- When sawing along a marked line, guide the circular saw along the corresponding groove.
- Clamp small pieces of wood securely before sawing. Never hold them in your hand.
- Always observe the safety regulations! Wear goggles!
- Do not use defective saw blades or blades with cracks or flaws.
- Do not use flanges or flange nuts with a hole which is larger or smaller than that of the saw blade used.
- Do not try to stop the saw blade with your hand or by applying pressure to the side of the blade.
- The hinged guard must not jam and must return to its original position once work is completed.
- Before plugging in the circular saw, check that the hinged guard is functioning properly.

- Before each use, always check that the safety devices - the hinged guard, riving knife, flanges and adjustment devices - are functioning properly and have been adjusted and secured correctly.
- You can connect a suitable dust extractor to the guard hood. Check that the dust extractor is fitted securely and properly.
- The retractable blade guard is not to be wedged in the open position.

Maintenance

- Keep the cooling vents on the motor housing clean and unobstructed at all times. Blow out any dust and dirt at regular intervals.
- Have a specialist workshop check the carbon brushes in the event of excessive sparking.
- Worn carbon brushes are to be replaced only by a specialist workshop or by our Customer Service Centre.
- Keep the machine clean at all times.
- Never use any caustic agents to clean the plastic parts.
- If ever you discover any damage, consult the exploded drawing and parts list to determine exactly which replacement parts you need to order from our Customer Service Centre.

Important!
Wear ear muffs and goggles.



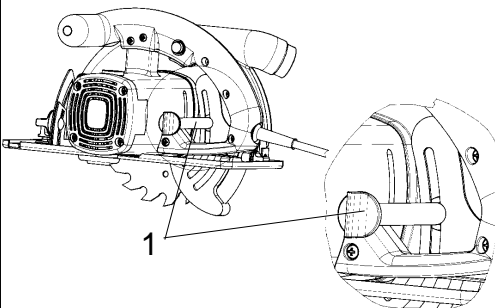
Parallel cuts

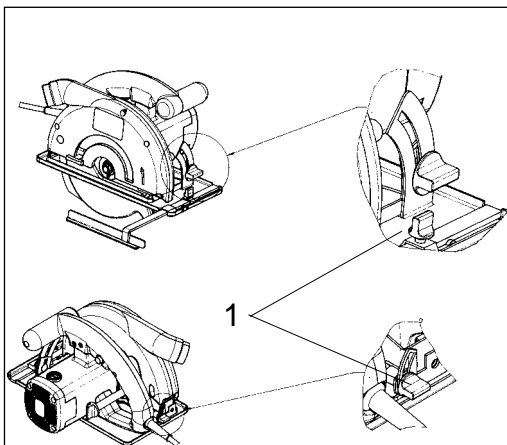
1. Release the lock screw 1.
2. For 90° cuts, adjust the parallel fence 2 using the scale on groove A, for 45° cuts adjust the parallel fence 2 using the scale on groove B. Observe the saw blade width.
3. Tighten the lock screw.

Important!
First make a trial cut.

Adjustment of the cutting depth

1. Release the lock screw.
2. Swing the shoe downwards.
3. Adjust the cutting depth using the scale. The saw teeth must project approx. 2 mm out of the wood.
4. Tighten the lock screw.





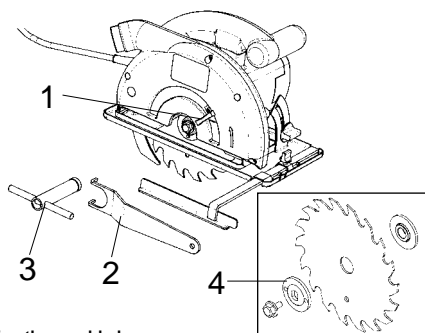
Adjustment of the shoe (cutting angle)

1. Release the lock screws 1
2. Adjust the shoe to the desired angle between 0 and 45°.
3. Tighten the lock screws 1. (front and rear)

Important!
Pull out the plug before making any changes to the circular saw!

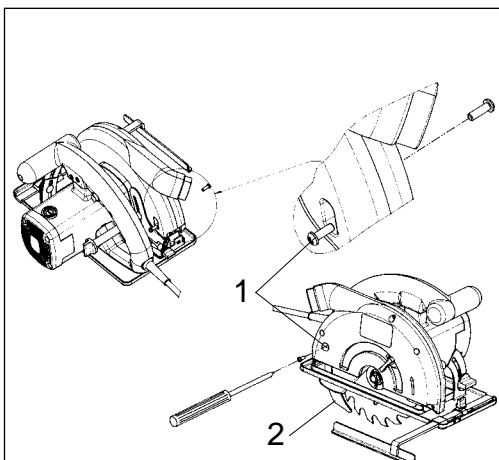
Switching on

Before pressing the On/Off switch, check that the saw blade is properly fitted, that the moving parts run smoothly and that the clamping screws are tight.



Changing the saw blade

1. Open the hinged guard hood 1 and hold.
2. Use the face spanner 2 to stop the saw blade from moving.
3. Undo the screw with the socket wrench 3.
4. Remove the flange 4 and the saw blade by dropping down and out.
5. Clean the flange and insert a new blade. Note the direction of rotation (see arrow on the guard hood).
6. Tighten the screw and check for concentricity.



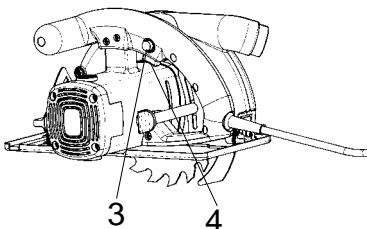
Fitting and removing the riving knife

1. Undo the recessed head screws 1 and remove.
2. Pull the riving knife 2 down and out.
3. Fit in reverse order.

Switching on and off

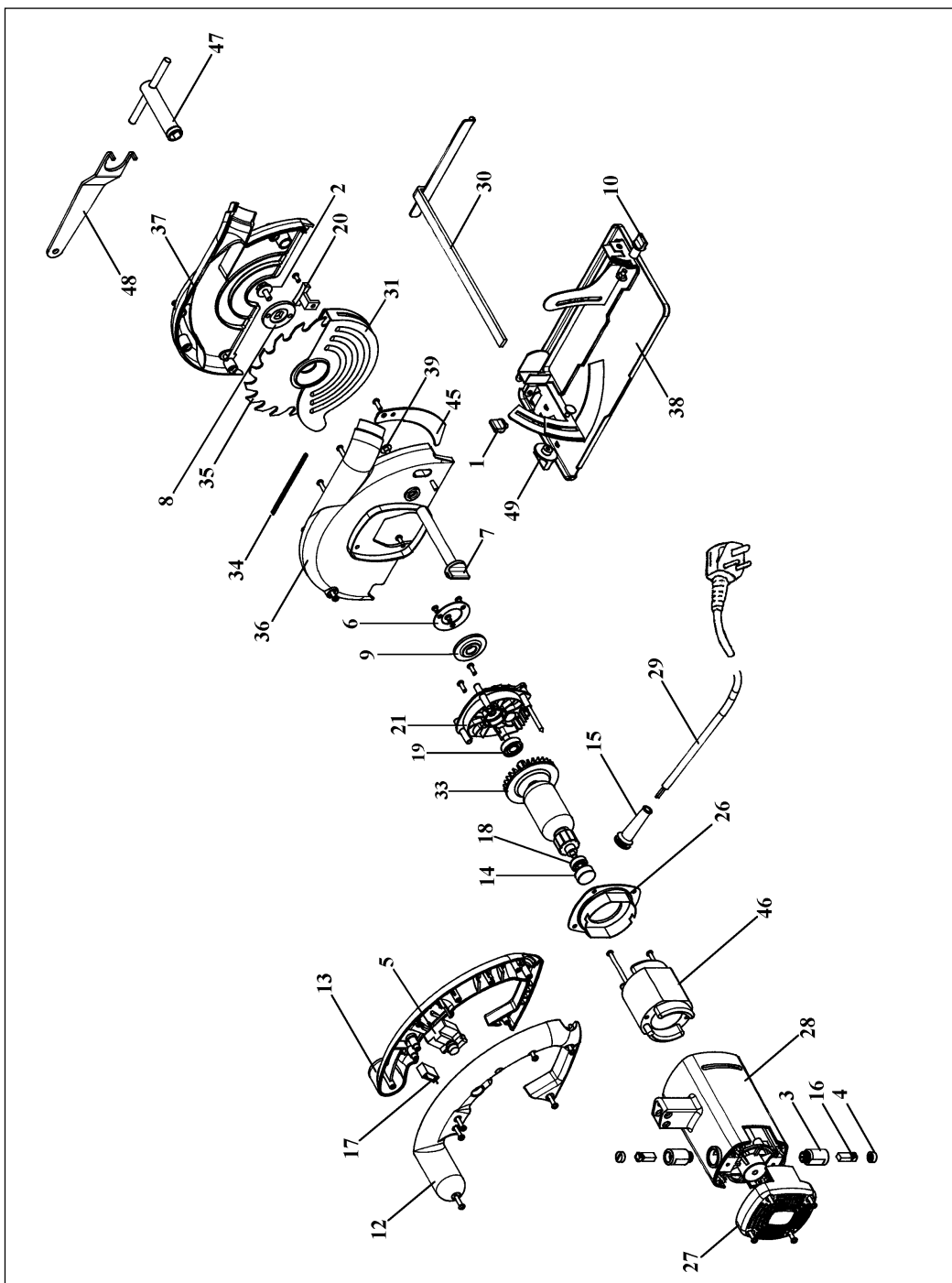
To switch on: Press the interlock button 3 and the switch 4 simultaneously.

To switch off: Release the interlock button and the switch.



Replacement parts drawing

Art. No.: 43.306.53 Ident. No.: 91016



Replacement parts list**Art. No.: 43.306.53****Ident. No.: 91019**

Item	Designation	RP No.
01	Fixing screw	43.303.00.20
02	Fixing screw	43.303.00.31
03	Brush holder	43.303.00.40
04	Brush cover	43.303.00.42
05	Switch	43.303.00.04
06	Spring-loaded support	43.303.00.17
07	Lock screw	43.303.00.84
08	External flange	43.303.00.30
09	Internal flange	43.303.00.22
10	Knurled screw	43.303.00.25
12	Handle element, left	43.306.50.01
13	Handle element, right	43.306.50.02
14	Rubber bushing	43.303.00.43
15	Anti-kink sleeve	43.303.00.37
16	Carbon brush	43.303.00.41
17	Capacitor	43.303.00.05
18	Ball bearing	43.303.00.08
19	Ball bearing	43.303.00.44
20	Plastic part	43.303.00.45
21	Bearing block	43.306.10.07
26	Air guide plate	43.306.10.03
27	Motor cover	43.306.50.03
28	Motor housing	43.306.50.04
29	Mains cable	43.303.00.03
30	Parallel fence	43.303.00.26
31	Hinged guard hood	43.303.00.16
33	Rotor	43.303.00.10
34	Resetting spring	43.306.10.06
35	Saw blade	45.020.30
36	Saw blade guard, rear	43.306.00.03
37	Saw blade guard, front	43.306.00.04
38	Shoe	43.303.00.49
39	Locking screw	43.303.00.52
45	Riving knife	43.306.00.07
46	Stator	43.303.00.09
47	Socket wrench	43.303.00.54
48	Pin wrench	43.303.00.53
49	Adjusting nut	43.303.00.21

(D)	(GB)	(F)	(NL)	(E)	(P)
EG Konformitätserklärung Der Unterzeichnende erklärt im Namen der Firma	EC Declaration of Conformity The Undersigned declares, on behalf of	Déclaration de Conformité CE Le soussigné déclare, au nom de	EC Conformiteitsverklaring De ondertekenaar verklaart in naam van de firma	Declaracion CE de Conformidad Por la presente, el abajo firmante declara en nombre de la empresa	Declaração de conformidade CE O abaixo assinado declara em nome da empresa

ISC GmbH, International Service Center · Eschenstraße 6 · D-94405 Landau/Isar

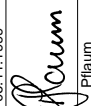
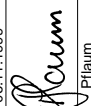
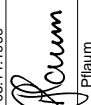
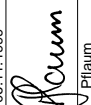
daß die	that the	que	dat de	que ella	que
Maschine/Produkt	Machine / Product	la machine / le produit	machine/product	máquina/producto	a máquina/o produto
Handkreissäge	Electric hand circular saw	Scie circulaire à main	Handcirkelzaag	Sierra circular de mano	Serra circular de mão
Marke	produced by:	du fabricant	merk	marca	marca



ECS 180

Type	Type	Type	type	tipo	tipo
– Seriennummer auf dem Produkt – <input checked="" type="checkbox"/> EG Maschinenrichtlinie 89/392/EWG mit Änderungen <input checked="" type="checkbox"/> EG Niederspannungsrichtlinie 73/23 EWG <input checked="" type="checkbox"/> EG Richtlinie Elektromagnetische Verträglichkeit 89/336 EWG mit Änderungen entspricht.	– Serial number specified on the product – <input checked="" type="checkbox"/> EC Directive regarding machinery 89/392 EEC, as amended; <input checked="" type="checkbox"/> EC Directive regarding low-voltage equipment 73/23 EEC; <input checked="" type="checkbox"/> EC Directive regarding electromagnetic compatibility 89/336 EEC, as amended.	– no. série indiqué sur le produit – <input checked="" type="checkbox"/> Directives CE relatives aux machines y compris les modifications y apportées; <input checked="" type="checkbox"/> Directive CE relative aux basses tensions 73/23 CEE; <input checked="" type="checkbox"/> Directive CE relative à la compatibilité électromagnétique 89/336 CEE avec les modifications y apportées.	– seriennummer op het product conform de volgende richtlijnen is: <input checked="" type="checkbox"/> EG machinerichtlijn 89/392/EWG met wijzigingen <input checked="" type="checkbox"/> EG laagspanningsrichtlijn 73/23 EWG <input checked="" type="checkbox"/> EG richtlijn Elektromagnetische compatibiliteit 89/336 EWG met wijzigingen	– No. de serie en el producto: satisface las disposiciones pertinentes siguientes: <input checked="" type="checkbox"/> Disposición de maquinaria de la CE 89/392/CEE con modificaciones <input checked="" type="checkbox"/> Disposición de baja tensión de la CE 73/23 CEE <input checked="" type="checkbox"/> Disposición de la compatibilidad electro-magnética de la CE 89/336 CEE con modificaciones.	– cujo número de série encontra-se no produto - corresponde à <input checked="" type="checkbox"/> Directiva da CE de máquinas 89/392/CEE, com alterações <input checked="" type="checkbox"/> Directiva da CE de baixa tensão 73/23 CEE <input checked="" type="checkbox"/> Directiva da CE de compatibilidade electro-magnética 89/336 CEE, com alterações

EN 55104-1; EN 55014; EN 60555-2; EN 50144-2-5; EN 292 T1; EN 292 T2 A1; EN 294; EN 349; EN 28662 T1

Landau/Isar, den 06.11.1999	Landau/Isar, (date) 06.11.1999	Landau/Isar, datum 06.11.1999	Landau/Isar 06.11.1999
 Pilaum Produkt-Management	 Pilaum Produkt-Management	 Pilaum Produkt-Management	 Pilaum Produkt-Management

GB WARRANTY CERTIFICATE

The guarantee period begins on the sales date and is valid for 1 year.

Responsibility is assumed for faulty construction or material or functional defects.

Any necessary replacement parts and necessary repair work are free of charge.

We do not assume responsibility for consequential damage. Your statutory rights are not affected.

Your customer service partner

Service UK:

GB Product Partnership Solutions Ltd
8&9 Westwood Court
Clayhill Industrial Estate
Neston
South Wirral
Ch64 3TT
Tel: 0151 336 8246
Fax: 0151 336 3233

Technical specification subject to change

wegm. 11/99