



1000W
Wet and Dry Vacuum
BT-VC 1500 SA

QUICK START GUIDE

Easy steps to getting started.

1. Ensure all items, including your manual are removed from the packaging before discarding.
2. Assemble the wet and dry vacuum as per the following instructions.
- 3. IF YOU ARE IN ANY DOUBT PLEASE REFER TO THE DETAILED INSTRUCTIONS WITHIN OUR MANUAL.**



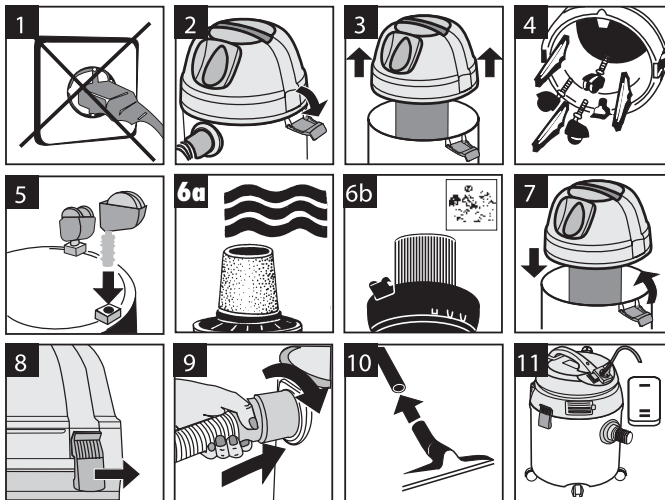


QUICK START GUIDE

1000W Wet and Dry Vacuum

BT-VC 1500 SA

1. Assembly



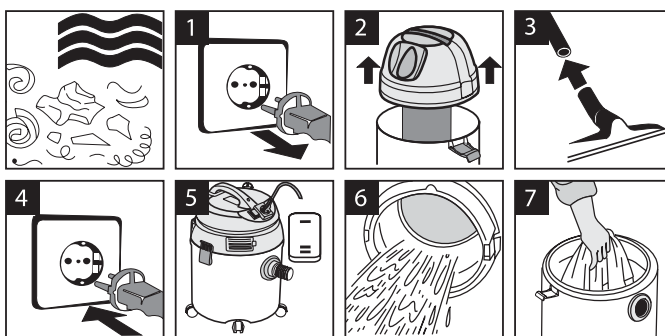
Please note:

Figure 6a:
Use the supplied foamed plastic filter for wet vacuum-cleaning

Figure 6b:
Use the already fitted pleated filter for dry vacuum-cleaning

Figure 11:
Switch position 1: normal mode;
Switch position 2: automatic mode

2. Wet vacuum-cleaning



For wet-vacuuming, slip the supplied foamed plastic filter over the filter basket (Figure 2). The pleated filter already fitted upon delivery is not suitable for wet-vacuuming!

PLEASE READ ALL INSTRUCTIONS BEFORE USING THE VACUUM CLEANER

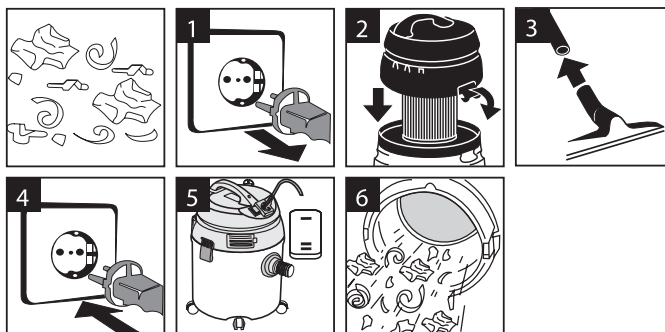


QUICK START GUIDE

1000W Wet and Dry Vacuum

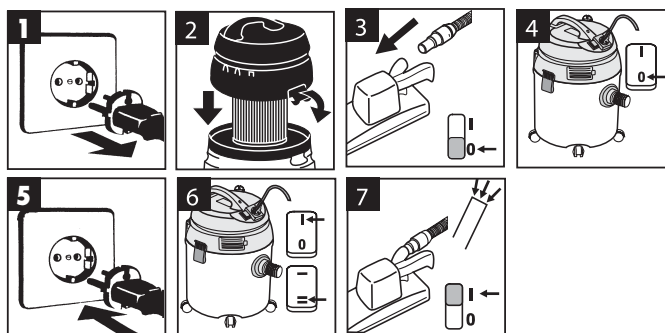
BT-VC 1500 SA

3. Dry vacuum-cleaning



For dry-vacuuming, slip the pleated filter (Figure 2) onto the filter basket.
The pleated filter is suitable for dry-vacuuming only.

4. Automatic mode with tools



Maximum power outlet 1400 W
Connect the electric tool to the integrated socket-outlet. Set the ON/OFF switch of the vacuum cleaner to position 1 (Figure 6). The vacuum cleaner will switch on automatically as soon as you switch on the electric tool (Figure 7). When you switch off the electric tool, the vacuum cleaner will also switch off after a pre-set delay.

3

PLEASE READ ALL INSTRUCTIONS BEFORE USING THE VACUUM CLEANER

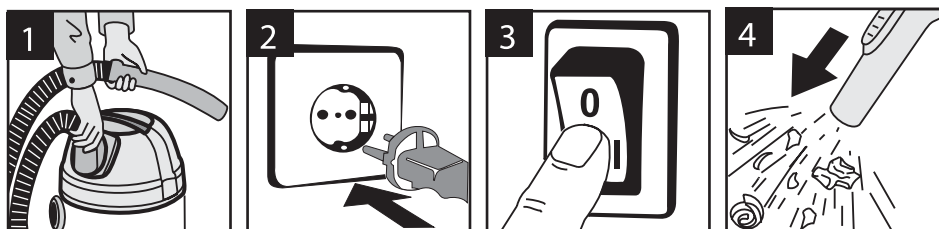


1000W Wet and Dry Vacuum

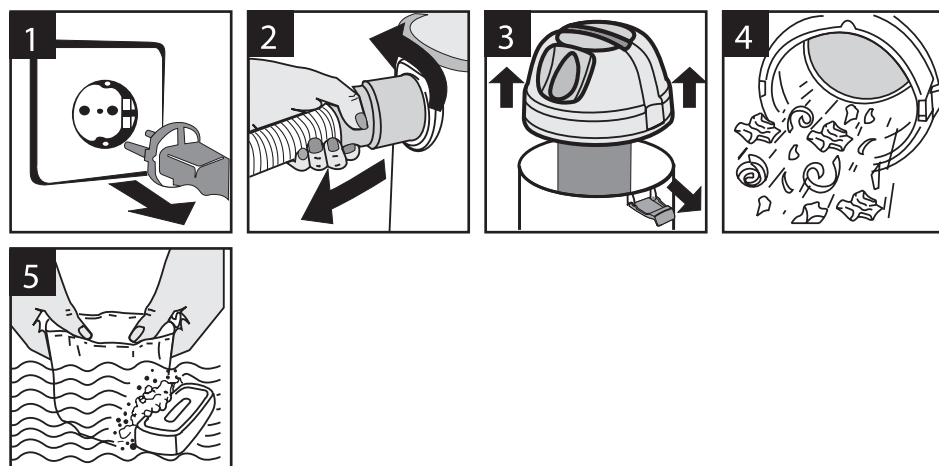
QUICK START GUIDE

BT-VC 1500 SA

5. Blowing



6. Maintenance-cleaning



PLEASE READ ALL INSTRUCTIONS BEFORE USING THE VACUUM CLEANER