

GB Operating Instructions
High-Pressure Cleaner



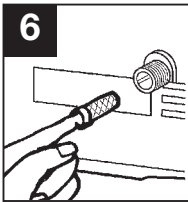
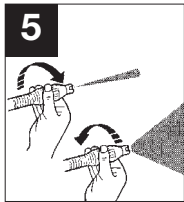
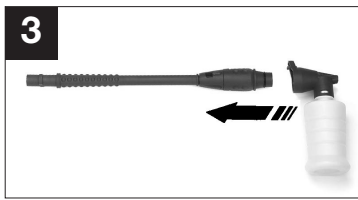
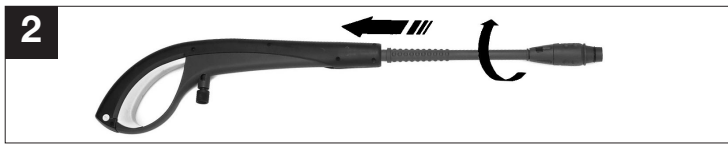
GB Please read these instructions carefully before
installing and operating the high-pressure cleaner!



Art.-Nr.: 41.404.26

I.-Nr.: 01013

BHR 100F



Layout (Fig. 1)

- 1 ON/OFF switch
- 2 Connection, high-pressure hose to device
- 3 Connection, water inlet
- 4 High-pressure hose
- 5 Pistol grip
- 6 Connection, high-pressure hose to pistol
- 7 Lance
- 8 Accessory mount
- 9 Foam nozzle

General safety regulations and accident prevention

It is essential that you read the safety regulations and operating instructions in their entirety and follow the information contained therein in order to eliminate the possibility of an accident or potentially dangerous situation from occurring while working with the high-pressure cleaner.

- The electrical connection must be installed by an electrician in accordance with IEC 60364.
- The power plug must be plugged into a properly installed and earthed socket outlet with connected earth-leakage circuit breaker (30 mA).
- Always check the device, the mains cable and the plug before using the high-pressure cleaner. Only operate the device when it is in good working order and has not been damaged in any way. Damaged parts must be immediately replaced by a qualified electrician.
- Always pull the power plug out of the socket outlet before doing any work on the high-pressure cleaner, before changing the nozzle and whenever the cleaner is not being used.
- Only use suitable extension cables when working outdoors. Extension cables must have a minimum cross-section of 1.5 mm². The plug connections must have earthing contacts and be rainwater-protected. Cables over 10 m in length must have a cross section of at least 2.5 mm².
- **Warning!** This device was developed to be used with cleaning agents supplied or recommended by the manufacturer. The use of any other cleaning agents or chemicals can negatively affect the safety of the device.
- **Warning!** Do not use the device when other persons or animals are in the near vicinity unless they are wearing appropriate protective clothing.
- **Warning!** High-pressure jets can be dangerous when the cleaner is not used properly. Do not direct the jet toward persons, animals, live electrical equipment or the device itself.
- Do not direct the jet toward yourself or others in order to clean clothes and footwear.
- Do not allow the high-pressure cleaner to be used by children or unauthorized persons.
- **Warning!** High-pressure hoses, fittings and couplings are important components that help to ensure device safety. Only use high-pressure hoses, fittings and couplings that are recommended by the manufacturer.
- In order to ensure the operational safety of the device, only use genuine manufacturer's replacement parts or parts that have been approved by the manufacturer.
- Do not operate the device if the mains cable or other important parts of the device - e.g. safety-related elements, high-pressure hoses, spray pistol - are damaged.
- **Warning!** Unsuitable extension cables can be dangerous.
- Do not pull or carry the electric tool by its mains cable. Protect the mains cable from becoming damaged by oil, solvents and sharp edges. Do not pull or carry the electric tool by its mains cable.
- Keep your place of work tidy.
- Ensure that the switch is turned off when connecting the unit to the power supply.
- Wear suitable work clothes.
- Check your high-pressure cleaner to ensure that it is in good working order. If the cleaner is not functioning properly, have it checked by an authorized professional. Have all maintenance and inspection work carried out only by a qualified electrician or ISC GmbH.
- The water jet that emerges from the high-pressure nozzle produces a „kickback“ on the spray pistol. Therefore, make sure that you have a solid footing and that you have a firm hold of the pistol grip. In order to protect yourself from possible flying objects (that are released due to the high pressure), wear suitable protection gear.
- Use cleaning agents sparingly. Observe the dosing instructions of the manufacturer.
- The high-pressure jet can damage vehicle tires and tire parts. Keep a distance of at least 30 cm from the object being cleaned.
- If there is a power failure while you are using the machine, be sure to switch off the machine for safety reasons.
- The electric pump always must be able to draw on a sufficient supply of water. Dry operation causes severe damage to the seals.

GB

Operating Instructions for the High-Pressure Cleaner

Use

The high-pressure cleaner is designed to clean vehicles, machines, buildings, facades, etc. in the private sector.

Items supplied

- High-pressure cleaner
- High-pressure hose
- Spray pistol
- Lance
- Foam nozzle

Areas of application

Never use the machine in potentially explosive areas under any circumstances!

The operating temperature must be between +5 and +60 °C.

The machine consists of an assembly with a pump, which is encased in a shock absorbing housing. For an optimal working position the machine comes with a lance and a non-slip pistol grip, whose shape and configuration comply with the applicable regulations.

Do not cover or modify the lance or the spray nozzles in any way.

The high-pressure cleaner is designed to be used with cold or lukewarm water (max. 60 °C); higher temperatures can damage the pump.

Do not use water that is dirty, gritty or contains any chemical products, as these could impair operation and shorten the life of the machine.

Accessories can be used to carry out work with foam cleaners, sand spraying and rotary brushes.

The normal lance or the lance for foam cleaning can be attached prior to using the high-pressure cleaner (cf. Fig. 2 + Fig. 3).

Assembly (Fig. 1 and Fig. 2)

Connect the high-pressure hose (4) to the connection on the high-pressure cleaner (2) and on the spray pistol (6).

Insert the lance into the spray pistol as shown in Fig. 2 and lock the lance by twisting it.

Connect the water inlet hose (min. Ø 1/2") to the water connection (3) of the high-pressure cleaner.

A backflow stop must be installed between the water tap and the high-pressure cleaner! Ask your local plumber about this.

Connect the mains cable to the socket outlet.

Starting up

Open the water inlet. Press safety pin „a“ (Fig. 4) on the spray pistol and pull back trigger lever „b“ (Fig. 4) in order to bleed the trapped air out of the device.

Turn on the device using the foot switch (Fig. 1, Pos. 1).

To temporarily turn off, release the trigger lever, at which point the device goes to standby. As soon as you press the trigger lever again, the high-pressure cleaner restarts.

To completely turn off the high-pressure cleaner, press the ON/OFF switch.

The shape of the water jet can be changed from concentrated to flat jet by turning the nozzle (Fig. 5).

Using the foam nozzle (Fig. 3)

Fill the foam propellant bottle with the respective cleaning agent. Push the foam nozzle onto the lance until it snaps into place. The cleaning agent is automatically mixed with the water jet.

Correctly using the device

- The high-pressure cleaner must be horizontally placed on a flat, secure surface.
- It is recommended that you maintain the correct operating position every time you use the machine by placing one hand on the pistol and the other on the lance.
- Never direct the water jet toward electrical lines or the machine itself.
- It is normal for the pump to leak a little; this is necessary to avoid damage to the pump when it is at a standstill.

Maintenance**Checking the water intake filter (Fig. 6)**

Periodically check the intake filter in order to prevent clogging, which could jeopardize operation of the pump.

To do this, unscrew the connection coupling for the water inlet hose from the device and clean the exposed inlet sieve by placing it under running water.

Long periods of nonuse (electric pump)

If the machine is going to be stored for longer periods of time (i.e. over three months) in a room where frost could develop, it is recommended that the machine be filled with an antifreeze solution (similar to the antifreeze solutions used for vehicles).

When the device is not used for an extended period of time, lime deposits begin to form in the electric pump, which in turn can lead to starting difficulties.

Electric motor

The electric motor is equipped with a motor circuit breaker switch. When the motor starts to run hot, it is cut out by this switch. Turn off the device with the foot switch (1). Wait 5 - 10 minutes before using the device again. Try to determine the cause of the fault. If the problem repeats itself, please contact a customer service center.

Technical data

Rated voltage:	220-240 V ~ 50/60 Hz
Power rating:	1100 watts
Working pressure:	60 bar
System pressure (EW bar):	max. 100 bar
Output:	360 l/h
Suction height:	1 m
Max. water inlet pressure:	7 bar
LPA sound pressure level:	86.2 dB (A)
LWA sound power level:	102 dB (A)
Weight:	11.9 kg

GB**TROUBLESHOOTING**

FAULT	CAUSE	REMEDY
The electric pump does not run when the switch is pressed.	The plug is damaged. There is insufficient voltage. The pump is locked. The thermal relay has triggered.	Check the plug and fuses to see if they are okay. Manually turn over the motor. Let the motor cool down.
The electric pump runs, however no pressure is generated.	The intake filter is clogged. Air is being drawn in at the connectors. The inlet and outlet valves are clogged or worn. The diameter of the nozzle hole is too large.	Clean the filter. Check the intake connection fitting and the hose connectors. Clean or replace. Check and replace.
The operating pressure is irregular.	Air is being drawn in. The valves are clogged and worn. The seals are worn.	Check the intake connectors. Clean and replace. Check and replace.
The motor suddenly stops.	The thermal relay has triggered due to overheating.	Check the voltage. Turn off the switch and let the motor cool down for a few minutes.
The pump drips.	The seals are worn.	Check and replace (professional repair shop).
There is a loss of pressure.	The nozzle is worn. The valves are dirty or clogged. The valve seals are worn. The seals are worn. The filter is clogged.	Change the nozzle. Check, clean, exchange. Check and/or exchange. Check and/or exchange. Check and/or clean.
There is excess noise.	Air is being drawn in. The valves are worn, dirty or clogged. The bearings are worn. The water temperature is too high. The filter is dirty.	Check the intake lines. Check, clean, exchange. Check and/or exchange. Lower the temperature to below 60 °C. Check and/or exchange.
Expelled water is mixed with oil.	The sealing rings (water + oil) are worn.	Check and/or exchange.
Water leaks from the pump head.	The seals are worn. The O-ring of the seal set is worn.	Exchange the seal. Exchange the O-ring.
When the switch is pressed, the motor hums but does not start.	The mains voltage is lower than that specified. The pump is blocked or frozen. The extension cable is insufficient (cross section too small, cable too long).	Check to see that the extension cable is sufficient. Exchange the extension cable for one that is sufficient.

DISCARDING THE MACHINE

Carry out the following measures immediately you are no longer going to use the machine:

- Pull out the plug and make the machine inoperable.
- Store the machine in an area that cannot be reached by children.
- Do not use any parts from the used machine as replacement parts.
- Disassemble the machine and discard the individual parts in accordance with the regulations in force in your area

- D EG Konformitätserklärung
- GB EC Declaration of Conformity
- F Déclaration de Conformité CE
- NL EC Conformiteitsverklaring
- E Declaracion CE de Conformidad
- P Declaração de conformidade CE
- S EC Konformitetsförklaring
- FIN EC Yhdenmukaisuusilmoitus
- N EC Konformitetserklæring
- RU EC Заявление о соответствии
- HR Dichiarazione di conformità CE
- RO Declarație de conformitate CE
- TR AT Uygunluk Deklarasyonu



- GR EC Δήλωση περί της ανταπόκρισης
- I Dichiarazione di conformità CE
- DK EC Overensstemmelseserklæring
- CZ EU prohlášení o konformitě
- H EU Konformkijelentés
- SLJ EU Izjava o skladnosti
- PL Oświadczenie o zgodności z normami Europejskiej Wspólnoty
- SK Vyhásenie EU o konformite



Bavaria BHR 100 F

Der Unterzeichnende erklärt in Namen der Firma die Übereinstimmung des Produktes.
 The undersigned declares in the name of the company that the product is in compliance with the following guidelines and standards.
 Le soussigné déclare au nom de l'entreprise la conformité du produit avec les directives et normes suivantes.
 De ondertekenaar verklaart in naam van de firma dat het product overeenstemt met de volgende richtlijnen en normen.
 El abajo firmante declara, en el nombre de la empresa, la conformidad del producto con las directrices y normas siguientes.
 O signatário declara em nome da firma a conformidade do produto com as seguintes directivas e normas.
 Undertecknad förklarar i firmans namn att produkten överensstämmer med följande direktiv och standarder.
 Allekirjoittanut ilmoittaa liikkeen nimissä, että tuote vastaa seuraavia direktiivejä ja standardeja:
 Undertegnede erklærer på vegne av firmaet at produktet samsvarer med følgende direktiver og normer.
 Подписавшийся подтверждает от имени фирмы что настоящее изделие соответствует требованиям следующих нормативных документов.

Az aláíró kijelenti, a cég nevében a termék megegyezését a következő irányvonalakkal és normákkal.
 Subsemnatul declară în numele firmei că produsul core-spunde următoarelor directive și standarde.
 Imzaiyacı kişi, firma adına ünlünin aşajıda anılan yönetme-liklere ve normlara uygun olduđunu beyan eder.
 Ev ondmati tou proiōntos thlōnei o upoyeyραμμένος την συμφωνία του προϊόντος προς τους ακόλουθους κανονισμούς και τα ακόλουθα πρότυπα.
 Il sottoscritto dichiara a nome della ditta la conformità del prodotto con le direttive e le norme seguenti.
 På firmaets vegne erklærer undertegnede, at produktet imødekommer kravene i følgende direktiver og normer.
 Niže podedpsany jménem firmy prohlašuje, že výrobek odpovídá následujícím směrniciím a normám.
 Az aláíró kijelenti, a cég nevében a termék megegyezését a következő irányvonalakkal és normákkal.
 Podpisani izjavljam v imenu podjetja, da je proizvod v skladnosti s sledečimi smernicami in standardi.
 Niže podpisany oświadcza w imieniu firmy, że produkt jest zgodny z następującymi wytycznymi i normami.
 Podpisujući zāvázne prehlásuje v mene firme, že tento výrobek je v súlade s nasledovnými smernicami a normami.

<input checked="" type="checkbox"/> 98/37/EG	<input type="checkbox"/> 89/686/EWG	ISC GmbH Eschenstraße 6 94405 Landau/Isar
<input checked="" type="checkbox"/> 73/23/EWG	<input type="checkbox"/> 87/404/EWG	
<input type="checkbox"/> 97/23/EG	<input type="checkbox"/> R&TTED 1999/5/EG	
<input checked="" type="checkbox"/> 89/336/EWG	<input checked="" type="checkbox"/> 2000/14/EG: L _{WM} 99 dB(A); L _{WA} 102 dB(A)	
<input type="checkbox"/> 90/396/EWG		

EN 60335-1; EN 60335-2-79; EN 55014-1; EN 55014-2; EN 61000-3-2; EN 61000-3-3; KBV V

Landau/Isar, den 12.06.2003

Brunhötz *Kapf*
 Brunhötz Kapf
 Leiter Produkt-Management Produkt-Management

Archivierung / For archives: 4140420-42-4155050-E

GARANTIEURKUNDE

Wir gewähren Ihnen zwei Jahre Garantie gemäß nachstehenden Bedingungen. Die Garantiezeit beginnt jeweils mit dem Tag der Lieferung, der durch Kaufbeleg, wie Rechnung, Lieferschein oder deren Kopie, nachzuweisen ist. Innerhalb der Garantiezeit beseitigen wir alle Funktionsfehler am Gerät, die nachweisbar auf mangelhafte Ausführung oder Materialfehler zurückzuführen sind. Die dazu benötigten Ersatzteile und die anfallende Arbeitszeit werden nicht berechnet.

Ausschluß: Die Garantiezeit bezieht sich nicht auf natürliche Abnutzung oder Transportschäden, ferner nicht auf Schäden, die infolge Nichtbeachtung der Montageanleitung und nicht normgemäßer Installation entstanden. Der Hersteller haftet nicht für indirekte Folge- und Vermögensschäden. Durch die Instandsetzung wird die Garantiezeit nicht erneuert oder verlängert. Bei Garantieanspruch, Störungen oder Ersatzteilbedarf wenden Sie sich bitte an.

ISC GmbH · International Service Center
 Eschenstraße 6 · D-94405 Landau/Isar (Germany)
 Info-Tel. 0190-145 048 (62 Ct/Min.) · Telefax 0 99 51-26 10 und 52 50
 Service- und Infoserver: <http://www.isc-gmbh.info>

WARRANTY CERTIFICATE

The guarantee period begins on the sales date and is valid for 2 years. Responsibility is assumed for faulty construction or material or functional defects. Any necessary replacement parts and necessary repair work are free of charge. We do not assume responsibility for consequential damage.

Your customer service partner

- ISC GmbH
Eschenstraße 6
D-94405 Landau/Isar
Tel. (0190) 145 048, Fax (099 51) 2610 u. 5250
- Hans Einhell Österreich Gesellschaft m.b.H.
Müllgasse 1
A-2363 Guntramsdorf
Tel. (02236) 533146, Fax (02236) 52369
- Fubag International
St. Gallenstraße 182
CH-8400 Winterthur
Tel. (052) 2368797, Fax (052) 2368700
- Einhell UK Ltd
Morpeth Works
Twelve Quays
Bilston Road, Winstan
CH 41 1NG
Tel. 0151 6491500, Fax 0151 6491501
- Pour toutes informations ou service après vente, merci de prendre contact avec votre revendeur.
- Einhell Benelux
Verdissen 44
NL-4818 PK Breda
Tel. 076 5986470, Fax 076 5986478
- Einhell Benelux
Verdissen 44
NL-4818 PK Breda
Tel. 076 5986470, Fax 076 5986478
- Comercial Einhell S.A.
Antonio Cabezon, N° 83 Planta 3a
E-28034 Fuencarral Madrid
Tel. 91 7246589, Fax 91 3581500
- Einhell Iberica
Rua de Almeida, 225 Apartado 2100
P-4405-917 Arcos de Valdevez VNG
Tel. 022 0917500 Fax 022 0917527
- Einhell Italia s.r.l.
Via Marconi, 16
I-22070 Bergegazzo (Co)
Tel. 031 992080, Fax 031 992084
- Einhell Skandinavien
Bergsjövej 30
DK-8600 Silkeborg
Tel. 087 201200, Fax 087 201203
- Sähköalo Harju Oy
Kortijärveläntie 2
FIN-03840 Tampere
Tel. 03 2345000, Fax 03 2345040
- Einhell Polska sp. z o.o.
Ul. Medyczna 2-4
PL-50-554 Wrocław
Tel. 071 3346508, Fax 071 3346503
- Einhell Hungaria Ltd.
Vajda Péter u. 12
H 1099 Budapest
Tel. 01 2039401, Fax 01 2101179
- Semak
maksima ticarinet ve sanayi ltd. st.
Atayr Caddesi Mah. Yusemim Sok. No: 19
TR 34843 Maltepe - Istanbul
Tel. 0216 4284865, Fax 0216 4429325
- Novotek S.R.L.
Bd.Lasar Catargiu 24-26
S.C. A. Pe. 9 Sector 1
RO 75 121 Bucharest
Tel. 021 4104600, Fax 021 4103568
- Pakar Plus S.R.O.
Anzel Va, Bechovice
Blatná 108
CZ-19011 Praha - Bechovice 911
Tel.+Fax: 02579 10204
- Einhell Bulgarien
S4 A, Stefan Stambolov Str.
Adi 4
BG 8000 Varna
Tel. 052 605254, Fax 052 605822
- Luma Trading d.o.o.
Ljubljanska 39
SLO-4000 Kranj
Tel. 04 2535330, Fax 04 2535333
- Einhell Croatia d.o.o.
Velika Ves 2
HR 42234 Laspinja
Tel. 049342 444, Fax 049 342 392
- MP Trading d.o.o.
Črna Ljupina BIV
VI 11000 Bregovci
- An. Mavrodopoulos S.A.
Technical & Commercial company
12, Popovstratu & Adiposiu Str.
GR 18545 Piraeus
Tel. 0210 4138156, Fax 0210 4137692
- Bermas
Alufyrvoykskoye shosse, 2A
RUS 127273 Moscow
Tel. 095 3639560, Fax 095 3639581

Technical changes subject to change
 EH 06/2003