



Table Saw

TKS 254/2000

Item No.: 4340401

Ident No.: 21011

Bar Code: 4006825661521

The KRAFTIXX bench-type circular saw TKS 254/2000 is a high-performance tool for performing precise and flexible work. The sturdy parallel stop enables longitudinal cuts. With the tilting saw blade precise angular cuts can be made with ease. If a larger support surface is needed, there are table extension at the and back and on the side. The sturdy underframe ensures a pleasant working height. The product is supplied with 2 saw blades (HW/TCT, Ø 254 x Ø30 mm).

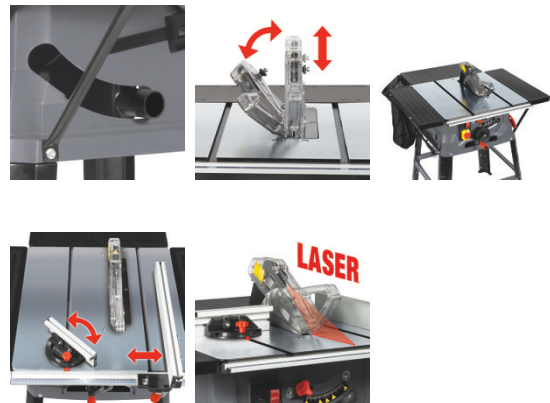
Features & Benefits

- Sturdy parallel stop for precise cuts
- Table extension for large workpieces
- The sturdy underframe enables a pleasant working height
- Adjustable cross stop
- Connection for dust extractor at the housing
- Laser for precise cuts
- 2 speed levels: 3200 min⁻¹ / 5000 min⁻¹
- Swivel and height adjustable saw blade
- Hand wheel for saw blade angle adjustment
- Incl. container for cutting residues
- Incl. saw blade Ø 254 x Ø 30 x 2.8 mm HW / TCT / t: 24
- Incl. saw blade Ø 254 x Ø 30 x 2.6 mm HW / TCT / t: 48



Technical Data

- Mains supply	230-240 V 50 Hz
- Power	1800 W
- Max. power (S6 S6%)	2000 W 40 %
- Idle speed	5000 min ⁻¹
- Saw blade	Ø254 x Ø30 mm
- Number of saw teeth	24 Pieces
- Swiveling range of saw blade	45 °
- Max. cutting height at 45°	65 mm
- Max. cutting height at 90°	85 mm
- Height adjustment continuous	0 - 85 mm
- Working height	870 mm
- Size of working table	546 x 580 mm
- Table broadening left	580 x 152 mm
- Table broadening right	580 x 152 mm
- Table length extension back side	540 x 250 mm



Logistic Data

- Product weight	20 kg
- Gross weight single packaging	23 kg
- Dimensions single packaging	910 x 850 x 1035 mm
- Pieces per export carton	1 Pieces
- Gross weight export carton	22.6 kg
- Dimensions export carton	670 x 570 x 310 mm
- Container quantity (20"/40"/40"HC)	224 476 544