

MAINTENANCE

- Keep the ventilation vents of the drill clean at all times.
- After each use, blow air through the drill housing to ensure it is free from all dust particles which may build up. Build up of dust particles may cause the drill to overheat and fail.
- If the enclosure of the drill requires cleaning, do not use solvents but a moist soft cloth only. Never let any liquid get inside the drill; never immerse any part of the drill into a liquid.

Gear Box Grease Replenishment

The grease in the gearbox will require replenishment after approximately 50 hours accumulative use. After this time, add approximately 50 grams (approx 2 – 3 teaspoons) of the grease, into the gearbox. First remove the grease cap from the drill by using the pin spanner. Once removed, add the grease through this hole. Ensure the grease cap is secured back into position prior to operation. Further grease (normal ball bearing grease) can be purchased through your local Bunnings Warehouse.

Carbon Brushes

When the carbon brushes wear out, the drill will spark and/or stop. Discontinue use as soon as this happens. They should be replaced prior to recommencing use of the drill. Carbon brushes are a wearing component of the drill therefore not covered under warranty. Continuing to use the drill when carbon brushes need to be replaced may cause permanent damage to the drill. Carbon brushes will wear out after many uses but when the carbon brushes need to be replaced, take the drill to an electrician or a power tool repairer for a quick and low cost replacement. Always replace both carbon brushes at the same time.

Note: Ozito Industries will not be responsible for any damage or injuries caused by the repair of the drill by an unauthorised person or by mishandling of the drill.

TROUBLE SHOOTING

Problem	Cause	Remedy
Rotary Hammer Drill is not working	No power supplied	Make sure all plugs are connected and power outlet is in working order
	Mode Selectors in wrong position. Chisel Function will not engage if mode selectors are as shown below	Please refer to 'Operating The Hammer Drill' section in the manual.
Hammer Function Not Engaging	Excess grease has been packed	Insert SDS-Plus accessory and then set both the modes to hammer function. Turn the drill on, firmly tap the accessory bit up and down onto a scrap piece of material to activate.
	Motor brushes binding in brush holders.	Clean brush holders. Remove carbon dust by using compressed air to blow out brush dust
Excessive sparking visible through air vents	Carbon brushes have worn out	Replace carbon brushes as per maintenance section.

SOUND & VIBRATION

Sound and vibration values were measured in accordance with EN 60745.

L_{pA} sound pressure level:	92.4 dB
K_{pA} uncertainty:	3 dB
K_{vA} uncertainty:	103.4 dB
K_{vB} uncertainty:	3 dB

The hammer drill is not designed for outdoors use as specified | Article 3 of Directive 2000/14/EC_2005/88/EC.

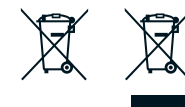
Wear ear-muffs.
The impact of noise can cause damage to hearing.

Total vibration values (vector sum of three directions) determined in accordance with EN 60745.

Hammer drilling in concrete
Vibration emission value $a_h = 17.571 \text{ m/s}^2$
K uncertainty = 1.5 m/s^2

Chiseling
Vibration emission value $a_h = 17.120 \text{ m/s}^2$
K uncertainty = 1.5 m/s^2

- Keep the noise emissions and vibrations to a minimum.**
- Only use appliances which are in perfect working order.
 - Service and clean the appliance regularly.
 - Adapt your working style to suit the appliance.
 - Do not overload the appliance.
 - Have the appliance serviced whenever necessary.
 - Switch the appliance off when it is not in use.
 - Wear protective gloves.



For EU countries only

Never place any electric power tools in your household refuse.

To comply with European Directive 2012/19/EC concerning old electric and electronic equipment and its implementation in national laws, old electric power tools have to be separated from other waste and disposed of in an environment-friendly fashion, e.g. by taking to a recycling depot.

Recycling alternative to the return request.
As an alternative to returning the equipment to the manufacturer, the owner of the electrical equipment must make sure that the equipment is properly disposed of if he no longer wants to keep the equipment. The old equipment can be returned to a suitable collection point that will dispose of the equipment in accordance with the national recycling and waste disposal regulations. This does not apply to any accessories or aids without electrical components supplied with the old equipment.

The reprinting or reproduction by any other means, in whole or in part, of documentation and papers accompanying products is permitted only with the express consent of the ISC GmbH.

Subject to technical changes

ELECTRICAL SAFETY

WARNING! When using mains-powered tools, basic safety precautions, including the following, should always be followed to reduce risk of fire, electric shock, personal injury and material damage.
Read the whole manual carefully and make sure you know how to switch the tool off in an emergency, before operating the tool.
Save these instructions and other documents supplied with this tool for future reference.
Before you connect the equipment to the mains supply make sure that the data on the rating plate are identical to the mains data.

This tool is double insulated therefore no earth wire is required.

If the supply cord is damaged, it must be replaced by an electrician or a power tool repairer in order to avoid a hazard.
Note: Double insulation does not take the place of normal safety precautions when operating this tool. The insulation system is for added protection against injury resulting from a possible electrical insulation failure within the tool.
Using an Extension Lead
Always use an approved extension lead suitable for the power input of this tool. Before use, inspect the extension lead for signs of damage, wear and ageing. Replace the extension lead if damaged or defective. When using an extension lead on a reel, always unwind the lead completely. Use of an extension lead not suitable for the power input of the tool or which is damaged or defective may result in a risk of fire and electric shock.

GENERAL POWER TOOL SAFETY WARNINGS

WARNING! Read all safety warnings, instructions, illustrations and specifications provided with this power tool. Failure to follow the warnings and instructions may result in electric shock, fire and/or serious injury.
Save all warnings and instructions for future reference. The term "power tool" in the warnings refers to your mains-operated (corded) power tool or battery-operated (cordless) power tool.

- Work area safety**
 - Keep work area clean and well lit. Cluttered or dark areas invite accidents.
 - Do not operate power tools in explosive atmospheres, such as in the presence of flammable liquids, gases or dust. Power tools create sparks which may ignite the dust or fumes.
 - Keep children and bystanders away while operating a power tool. Distractions can cause you to lose control.
- Electrical safety**
 - Power tool plugs must match the outlet. Never modify the plug in any way. Do not use any adapter plugs with earthed (grounded) power tools. Unmodified plugs and matching outlets will reduce risk of electric shock.
 - Avoid body contact with earthed or grounded surfaces, such as pipes, radiators, ranges and refrigerators. There is an increased risk of electric shock if your body is earthed or grounded.
 - Do not expose power tools to rain or wet conditions. Water entering a power tool will increase the risk of electric shock.
 - Do not abuse the cord. Never use the cord for carrying, pulling or unplugging the power tool. Keep cord away from heat, oil, sharp edges or moving parts. Damaged or entangled cords increase the risk of electric shock.
 - When operating a power tool outdoors, use an extension cord suitable for outdoor use. Use of a cord suitable for outdoor use reduces the risk of electric shock.
 - If operating a power tool in a damp location is unavoidable, use a residual current device (RCD) protected supply. Use of an RCD reduces the risk of electric shock.
- Personal safety**
 - Stay alert, watch what you are doing and use common sense when operating a power tool. Do not use a power tool while you are tired or under the influence of drugs, alcohol or medication. A moment of inattention while operating power tools may result in serious personal injury.
 - Use personal protective equipment. Always wear eye protection. Protective equipment such as dust mask, non-skid safety shoes, hard hat, or hearing protection used for appropriate conditions will reduce personal injuries.
 - Prevent unintentional starting. Ensure the switch is in the off-position before connecting to power source and/or battery pack, picking up or carrying the tool. Carrying power tools with your finger on the switch or energising power tools that have the switch on invites accidents.
- Remove any adjusting key or wrench before turning the power tool on.** A wrench or a key left attached to a rotating part of the power tool may result in personal injury.
- Do not overreach. Keep proper footing and balance at all times.** This enables better control of the power tool in unexpected situations.
- Dress properly. Do not wear loose clothing or jewellery. Keep your hair, clothing and gloves away from moving parts.** Loose clothes, jewellery or long hair can be caught in moving parts.
- If devices are provided for the connection of dust extraction and collection facilities, ensure these are connected and properly used.** Use of dust collection can reduce dust-related hazards.
- Do not let familiarity gained from frequent use of tools allow you to become complacent and ignore tool safety principles.** A careless action can cause severe injury within a fraction of a second.
- Power tool use and care**
 - Do not force the power tool. Use the correct power tool for your application. The correct power tool will do the job better and safer at the rate for which it was designed.
 - Do not use the power tool if the switch does not turn it on and off. Any power tool that cannot be controlled with the switch is dangerous and must be repaired.
 - Disconnect the plug from the power source and/or remove the battery pack, if detachable, from the power tool before making any adjustments, changing accessories, or storing power tools. Such preventive safety measures reduce the risk of starting the power tool accidentally.
 - Store idle power tools out of the reach of children and do not allow persons unfamiliar with the power tool or these instructions to operate the power tool. Power tools are dangerous in the hands of untrained users.
 - Maintain power tools and accessories. Check for misalignment or binding of moving parts, breakage of parts and any other condition that may affect the power tool's operation. If damaged, have the power tool repaired before use. Many accidents are caused by poorly maintained power tools.
 - Keep cutting tools sharp and clean. Properly maintained cutting tools with sharp cutting edges are less likely to bind and are easier to control.
 - Use the power tool, accessories and tool bits etc. in accordance with these instructions, taking into account the working conditions and the work to be performed. Use of the power tool for operations different from those intended could result in a hazardous situation.
 - Keep handles and grasping surfaces dry, clean and free from oil and grease. Slippery handles and grasping surfaces do not allow for safe handling and control of the tool in unexpected situations.
- Service**
 - Have your power tool serviced by a qualified repair person using only identical replacement parts. This will ensure that the safety of the power tool is maintained.

ROTARY HAMMER DRILL SAFETY WARNINGS

- Wear ear protection.** The impact of noise can cause damage to hearing.
- Use the additional handles supplied with the tool.** Losing control of the tool can cause injuries.
- Hold the equipment by the insulated handles when carrying out work during which the plug-in tool could strike concealed power cables or its own mains lead.** Contact with a live cable can also make the metal parts of the equipment live and will cause an electric shock.

Additional Safety rules

- Check that your mains voltage is the same as that marked on the rating plate.
- If you use a cable reel, run all the cable off the reel. The minimum conductor cross section used should be 1.5mm².
- If you use this electric hammer drill outdoors you must connect it using a suitable H07RNF 3G 1.5 mm² extension cable with a spraywater protected plug.
- Make sure of your footing, particularly when working free-handed on ladders or scaffolding.
- Use a detector to localize pipes and/or cables in walls with concealed electric, water or gas lines. Avoid any contact with conducting electrical parts or lines.
- Wear ear-muffs to protect your hearing. Risk of progressive loss of hearing!
- Wear goggles and use a breathing mask on dusty jobs.
- Never use the machine near vapors or combustible liquids.
- Always unplug the machine before cleaning it or changing drill bits etc.
- Keep the power cable safe from damage. Oil and acids can damage cables.
- Never overload the machine.
- Important! Follow all safety regulations in your country applicable to the installation, use and maintenance of the machine.

- Chisel bits and drill bits can be inadvertently thrown out from the machine and cause serious injury.
- Always check that the chisel bit or drill bit is firmly locked in the chuck before you start work.
- Check the chuck for wear or damage at regular intervals.
- Do not start a hammering tool until it is pressed against a workpiece (wall, ceiling, etc.).
- Always unplug the hammer drill when you have finished working and remove the chisel bit or drill bit from the tool.
- Always unplug the machine before changing chisel bits or drill bits etc.
- Protect eyes and assistants from small flying parts and splinters. Wear a helmet! Erect a screen wall!
- Use work gloves to protect fingers from crushing and skin from grazing.
- Vibrations can be harmful to the hand-arm system: Keep the impact time of vibrations to a minimum.
- Always keep the power cable away from where you want to drill.
- Keep the machine out of children's reach.
- Always hold the machine with two hands when it is running and make sure of your footing.
- Make sure that the switch on the machine is set to the correct position for the work you want to perform before you put the machine into operation. If the switch is not in the correct position you risk suffering bodily injury when the machine starts to run.
- This appliance is not intended for use by persons (including children) with reduced physical, sensory or mental capabilities, or lack of experience and knowledge, unless they have been given supervision or instruction concerning use of the appliance by a person responsible for their safety. Children should be supervised to ensure that they do not play with the appliance.

DESCRIPTION OF SYMBOLS

Danger! Read the operating instructions to reduce the risk of inquiry.

Double insulated

Caution! Wear ear-muffs. The impact of noise can cause damage to hearing.

Caution! Wear a breathing mask. Dust which is injurious to health can be generated when working on wood and other materials. Never use the device to work on any materials containing asbestos!

Caution! Wear safety goggles. Sparks generated during working or splinters, chips and dust emitted by the device can cause loss of sight.

Select between the individual functions only when the equipment is at a standstill. If you fail to observe this point, the equipment may be damaged.

SERVICE INFORMATION

Please note that the following parts of this product are subject to normal or natural wear and that the following parts are therefore also required for use as consumables.

Category	Example
Wear parts*	Carbon brushes, chuck
Consumables*	Drill bits, chisels
Missing parts	

* Not necessarily included in the scope of delivery!

SPARE PARTS

Spare parts can be ordered from the Special Orders Desk at your local Bunnings Warehouse or Homebase store.

For further information, or any parts visit www.ozito-diy.co.uk or contact Ozito Customer Service: Great Britain: 0151 294 4488 Ireland: 1850 882711 E-mail: info@ozito-diy.co.uk

DECLARATION OF CONFORMITY

ISC GmbH · Eschenstraße 6 · D-94405 Landau/Isar		EU
explains the following conformity according to EU directives and norms for the following product		
Rotary Hammer RHD-1600U (Ozito)		
<input type="checkbox"/> 2014/29/EU	<input checked="" type="checkbox"/> 2006/42/EC	
<input checked="" type="checkbox"/> 2005/32/EC_2009/125/EC	<input type="checkbox"/> Annex IV	
<input type="checkbox"/> 2014/35/EU	Notified Body:	
<input type="checkbox"/> 2006/28/EC	Reg. No.:	
<input checked="" type="checkbox"/> 2014/30/EU	<input type="checkbox"/> 2000/14/EC_2005/88/EC	
<input type="checkbox"/> 2014/32/EU	<input type="checkbox"/> Annex V	
<input type="checkbox"/> 2014/53/EC	<input type="checkbox"/> Annex VI	
<input type="checkbox"/> 2014/68/EU	Noise: measured $L_{WA} =$ dB (A); guaranteed $L_{WA} =$ dB (A)	
<input type="checkbox"/> 90/396/EC_2009/142/EC	P = KW; L/D = cm	
<input type="checkbox"/> 89/686/EC_96/58/EC	Notified Body:	
<input checked="" type="checkbox"/> 2011/65/EU	<input type="checkbox"/> 2012/46/EU	Emission No.:
Standard references: EN 60745-1; EN 60745-2-6; EN 55014-1; EN 55014-2; EN 61000-3-2; EN 61000-3-3;		
Landau/Isar, den 01.08.2017		
Weichselgarter/General Manager		Yang/Product-Management
First CE: 17	Art.-No.: 30.001.26	I.-No.: 11017
Subject to change without notice		Archive-File/Record: NAPR016992
		Documents registrar: R. Gehard
		Wiesenerweg 22, D-94405 Landau/Isar

ozito

ROTARY HAMMER DRILL KIT

1600W

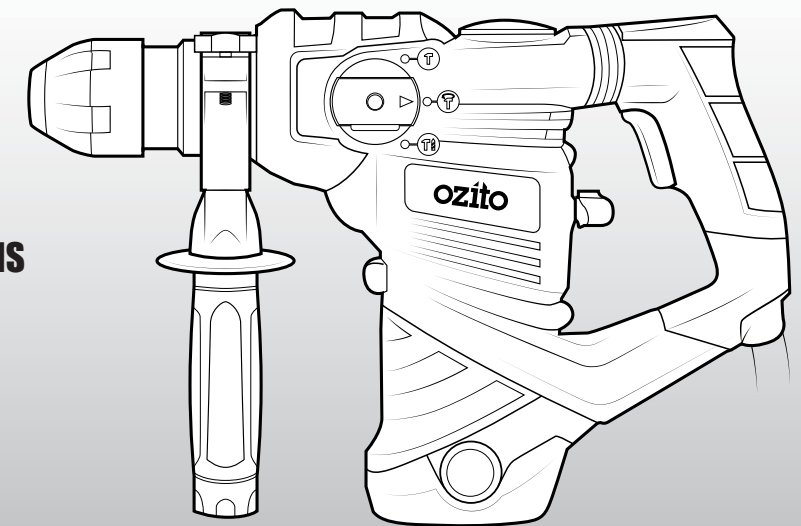
ORIGINAL INSTRUCTIONS

SPECIFICATIONS

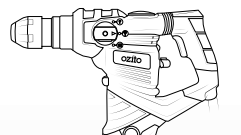
Input Voltage:	230-240V ~ 50Hz
Motor:	1600W
Impact Rate:	3,900 bpm
Impact Energy:	4.0 Joule
Drilling Capacity:	32mm (Masonry)
No Load Speed:	800/min
Accessory Fitment:	SDS-Plus
Protection Class:	II
Weight:	5.6kg

ozito-diy.co.uk

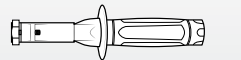
3 YEAR REPLACEMENT WARRANTY



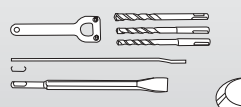
WHAT'S IN THE BOX



Rotary Hammer Drill



Side Handle



Accessories



Kit Box

RHD-1600U

WARRANTY

All of our products undergo strict quality checks to ensure that they reach you in perfect condition. In the unlikely event that your device develops a fault, please contact our service department at the address shown on this guarantee card. You can also contact us by telephone using the customer service number shown. Please note the following terms under which guarantee claims can be made:

1. These warranty terms regulate additional warranty services, which the manufacturer mentioned below promises to buyers of its new products in addition to their statutory guarantee claims are not affected by this guarantee. Our guarantee is free of charge to you.

2. The warranty services only covers defects due to material or manufacturing faults on a product which you have bought from the manufacturer mentioned below are limited to either the rectification of said defects on the product or the replacement of the product, whichever we prefer. Please note that our devices are not designed for use in commercial, trade or professional applications. A guarantee contract will not be created if the device has been used by commercial, trade or industrial business or has been exposed to similar stresses during the guarantee period.

3. The following are not covered by our guarantee:
- Damage to the device caused by a failure to follow the assembly instructions or due to incorrect installation, a failure to follow the operating instructions (for example connecting it to an incorrect mains voltage or current type) or a failure to follow the maintenance and safety instructions or by exposing the device to abnormal environmental conditions or by lack of care and maintenance.
- Damage to the device caused by abuse or incorrect use (for example overloading the device or the use of unapproved tools or accessories), ingress of foreign bodies into the device (such as sand, stones or dust, transport damage), the use of force or damage caused by external forces (for example by dropping it).
- Damage to the device or parts of the device caused by normal or natural wear or tear or by normal use of the device.

4. Your Product is guaranteed for a period of 36 months from the original date of purchase and is intended for DIY (Do It Yourself) use only. Warranty excludes consumable parts. Guarantee claims should be submitted before the end of the guarantee period within two weeks of the defect being noticed. No guarantee claims will be accepted after the end of the guarantee period. The original guarantee period remains applicable to the device even if repairs are carried out or parts are replaced. In such cases, the work performed or parts fitted will not result in an extension of the guarantee period, and no new guarantee will become active for the work performed or parts fitted. This also applies if an on-site service is used.

IN ORDER TO MAKE A CLAIM UNDER THIS WARRANTY YOU MUST RETURN THE PRODUCT TO THE PLACE OF PURCHASE WITH YOUR REGISTER RECEIPT.

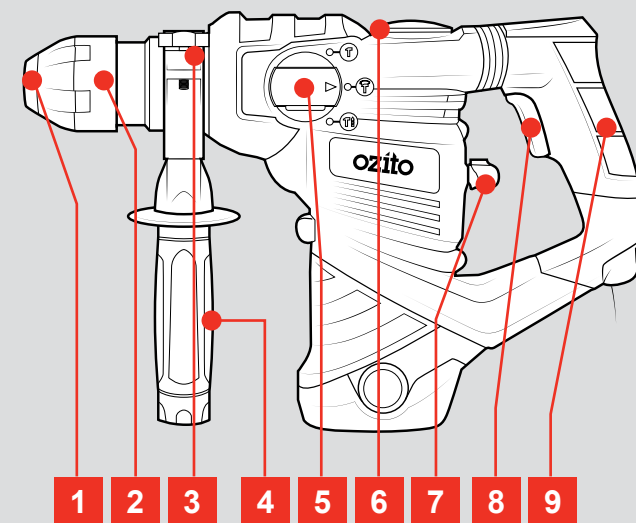
Please refer to the restrictions of this warranty concerning wearing parts, consumables and missing parts as set out in the service information in these operating instructions.

CUSTOMER SERVICE HELPLINE
GB: 0151 294 4488
IRL: 1850 882711
Ozito-diy.co.uk

KNOW YOUR PRODUCT

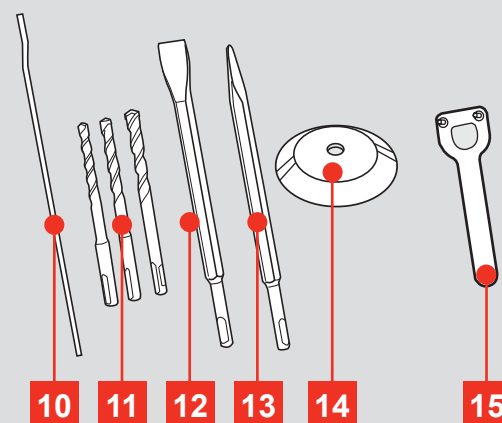
ROTARY HAMMER DRILL

- | | |
|-----------------------------|----------------------|
| 1 SDS-Plus Accessory Holder | 6 Grease Cap |
| 2 Accessory Locking Sleeve | 7 Rear Mode Selector |
| 3 Depth Rod Locking Hole | 8 On/Off Switch |
| 4 Side Handle | 9 Rear Handle |
| 5 Side Mode Selector | |



ACCESSORIES

- | | |
|--|---|
| 10 Depth Rod | 13 1 x SDS-Plus Point Chisel 14 x 250mm |
| 11 3 x SDS-Plus 150mm Drill Bits | 14 Dust Cover |
| 12 1 x SDS-Plus Flat Chisel 14 x 250mm | 15 Pin Spanner |



ONLINE MANUAL

Scan this QR Code with your mobile device to take you to the online manual.



SETUP & PREPARATION

1. BEFORE USE

Items Supplied

Please check that the article is complete as specified in the scope of delivery. If parts are missing, please contact our service center or the sales outlet where you made your purchase at the latest within 5 working days after purchasing the product and upon presentation of a valid bill of purchase. Also, refer to the warranty table in the service information at the end of the operating instructions.

- Open the packaging and take out the equipment with care.
- Remove the packaging material and any packaging and/or transportation braces (if available).
- Check to see if all items are supplied.
- Inspect the equipment and accessories for transport damage.
- If possible, please keep the packaging until the end of the guarantee period.

Danger!

The equipment and packaging material are not toys. Do not let children play with plastic bags, foils or small parts. There is a danger of swallowing or suffocating!

Proper Use

The tool is designed for drilling with hammer action in concrete, rock and brick, as well as for chiselling work, always using the respective correct drill or chisel bit.

The equipment is to be used only for its prescribed purpose. Any other use is deemed to be a case of misuse. The user / operator and not the manufacturer will be liable for any damage or injuries of any kind caused as a result of this.

Please note that our equipment has not been designed for use in commercial, trade or industrial applications. Our warranty will be voided if the machine is used in commercial, trade or industrial businesses or for equivalent purposes.

Caution!

Residual risks

Even if you use this electric power tool in accordance with instructions, certain residual risks cannot be ruled out. The following hazards may arise in connection with the equipment's construction and layout:

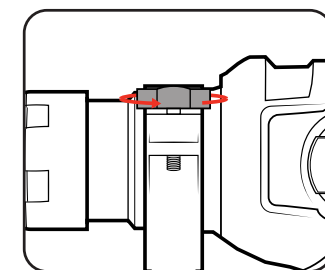
1. Lung damage if no suitable protective dust mask is used.
2. Damage to hearing if no suitable ear protection is used.
3. Health damage caused by hand-arm vibrations if the equipment is used over a prolonged period or is not properly guided and maintained.

2. USING THE DEPTH ROD

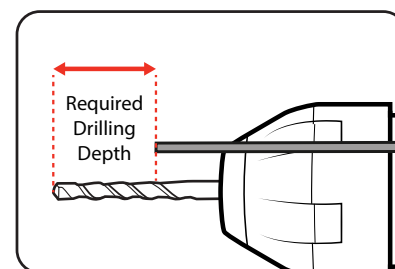
WARNING! ENSURE THE TOOL IS DISCONNECTED FROM THE POWER SUPPLY BEFORE PERFORMING ANY OF THE FOLLOWING OPERATIONS.

The depth rod allows you to drill to a predetermined depth.

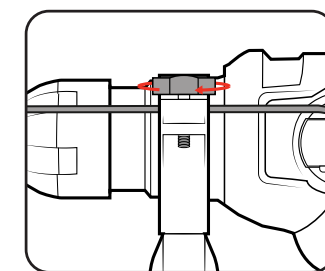
- 1 Loosen the depth rod securing nut then insert depth rod.



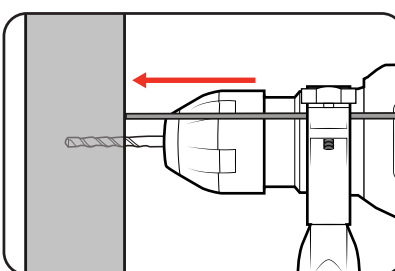
- 2 Adjust the depth rod so the drill bit extends beyond the end of the depth rod to the required drilling depth.



- 3 Tighten the depth rod securing nut to lock the depth rod into place.



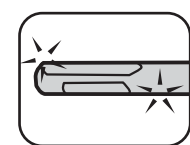
- 4 Drill the hole until the end of the depth rod touches the workpiece.



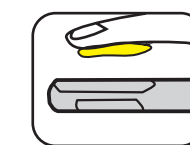
3. SDS-PLUS ACCESSORIES



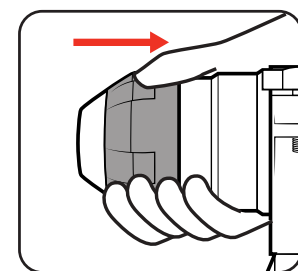
- 1 Prior to insertion into chuck, ensure the SDS-Plus accessory is clear of dust and debris.



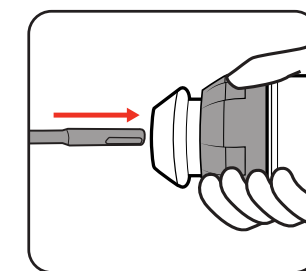
- 2 Prior to insertion into drill add supplied lubricant to the SDS-Plus accessory.



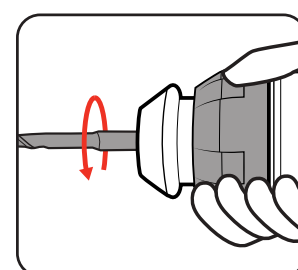
- 3 Pull locking sleeve back and hold.



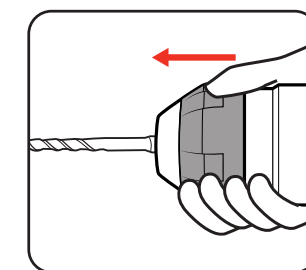
- 4 Insert SDS-Plus Accessory.



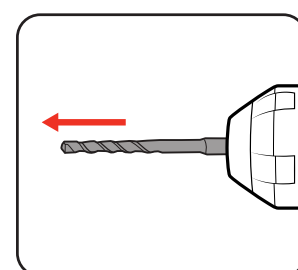
- 5 Rotate and continue to insert as far as possible.



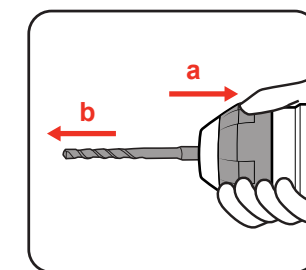
- 6 Release locking sleeve.



- 7 Checked SDS-Plus accessory is locked. Try to pull it out. Note: It should have approx 10 – 20mm movement. This is normal.



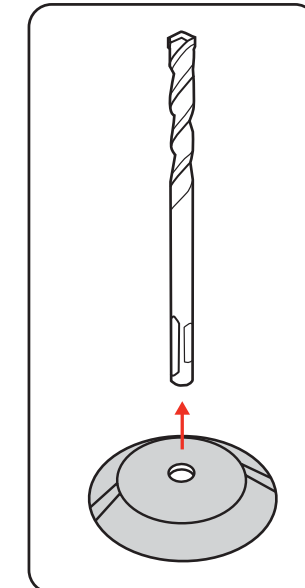
- 8 To remove the SDS-Plus accessory pull back the locking sleeve and pull accessory out.



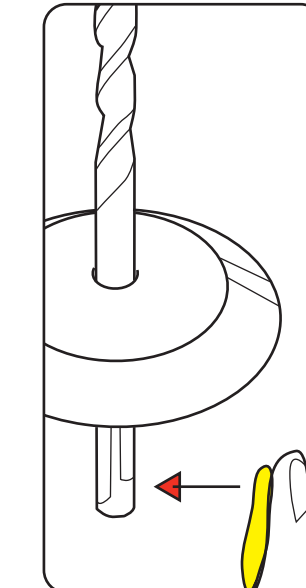
4. FITTING AND USING THE DUST COVER

The cover catches dust and debris - while using the drill upright or overhead - to avoid dust entering the air vents.

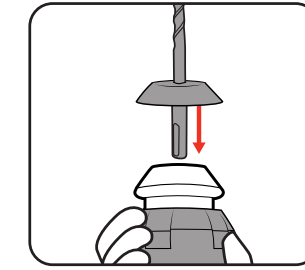
- 1 Slide dust cover over accessory.



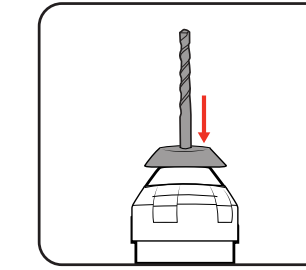
- 2 Add lubrication grease.



- 3 Insert drill bit in locking sleeve.



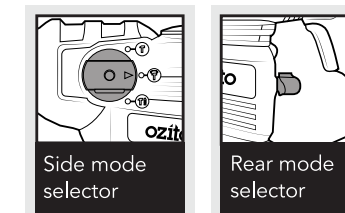
- 4 Press dust cover to the end of locking sleeve.



OPERATION

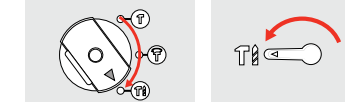
5. OPERATING THE HAMMER DRILL

- 1 Choose an operation mode:



Hammer Drill

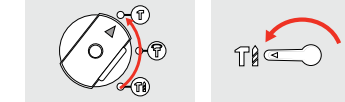
Rotate the side mode selector to the hammer and drill icon, and rotate the rear mode selector to the drill and hammer icon. This setting is recommended for use when drilling holes in concrete and other masonry products. The hammer action will be in operation while simultaneously the drill bit rotates.



Chiselling (Fixated)

Rotate the side mode selector to the hammer icon, and rotate the rear mode selector to the drill and hammer icon. This setting is recommended for use when you desire a hammer action without the accessory rotating which is ideal for "chiselling or chipping" away at masonry products, pick or chisel accessory bits should be used.

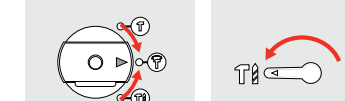
Note: This mode will stop the drill bit rotating completely.



Chiselling (Free Rotation)

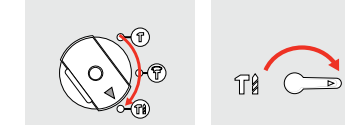
Rotate the side mode selector to the hammer icon with rotating arrow, and rotate the rear mode selector to the drill and hammer icon. This setting is recommended for use when you desire a hammer action without the drill action which is ideal for "chiselling or chipping" away at masonry products, pick or chisel accessory bits should be used.

Note: This mode will allow the drill bit to rotate freely.



Drilling

Rotate the side mode selector to the hammer and drill icon, and rotate the rear mode selector to the drill icon. This setting is recommended for use when you desire the accessory to rotate without hammer action. Ideal for drilling into timber or steel when correct accessories for such materials are used.

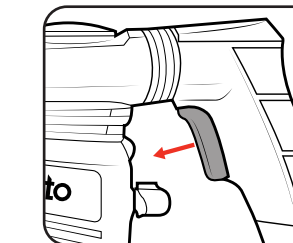
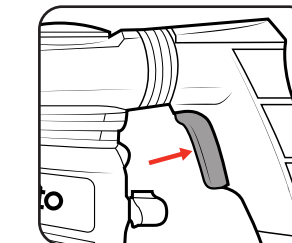


- 2 Ensure your workpiece is securely clamped where possible.

- 3 Connect the tool to the mains power supply.

- 4 To start drilling squeeze the On/Off switch.

- 5 To stop drilling release the On/Off switch.



NOTE: PRIOR TO CHANGING MODES, THE ON/OFF SWITCH SHOULD BE RELEASED AND THE DRILL SHOULD HAVE COME TO A COMPLETE STOP.