



**1000W**  
**Wet and Dry Vacuum**  
BT-VC 1500 SA

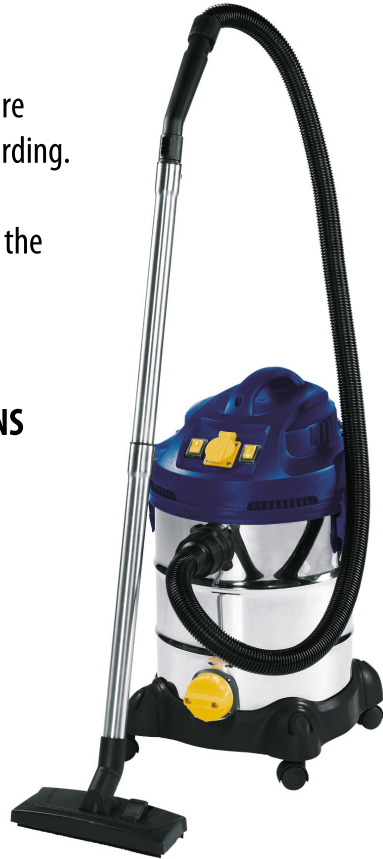
---

# QUICK START GUIDE

---

Easy steps to getting started.

1. Ensure all items, including your manual are removed from the packaging before discarding.
2. Assemble the wet and dry vacuum as per the following instructions.
- 3. IF YOU ARE IN ANY DOUBT PLEASE REFER TO THE DETAILED INSTRUCTIONS WITHIN OUR MANUAL.**



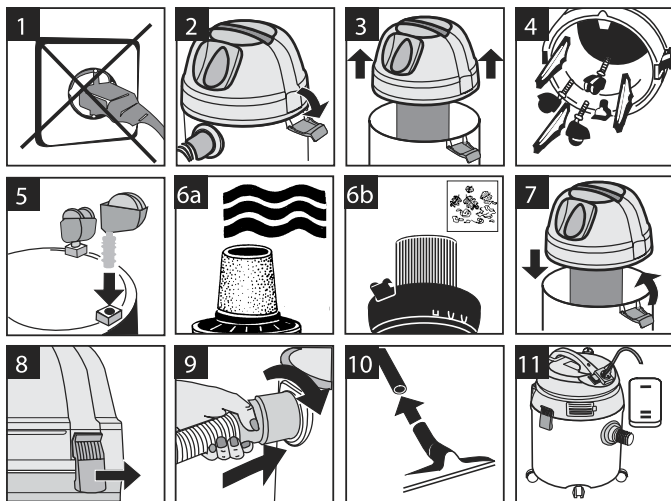


# QUICK START GUIDE

## 1000W Wet and Dry Vacuum

BT-VC 1500 SA

### 1. Assembly



**Please note:**

**Figure 6a:**

Use the supplied foamed plastic filter for wet vacuum-cleaning

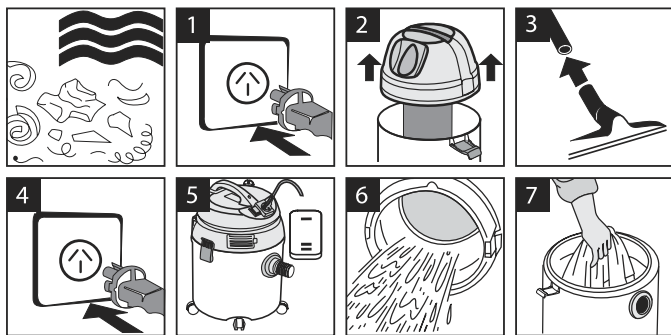
**Figure 6b:**

Use the already fitted pleated filter for dry vacuum-cleaning

**Figure 11:**

Switch position 1: normal mode;  
Switch position 2: automatic mode

### 2. Wet vacuum-cleaning



For wet-vacuuming, slip the supplied foamed plastic filter over the filter basket (Figure 2). The pleated filter already fitted upon delivery is not suitable for wet-vacuuming!

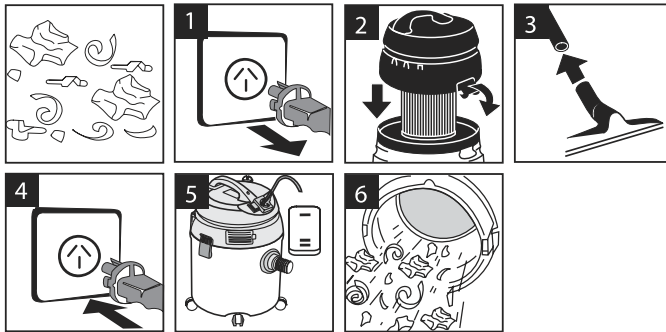


# QUICK START GUIDE

## 1000W Wet and Dry Vacuum

BT-VC 1500 SA

### 3. Dry vacuum-cleaning

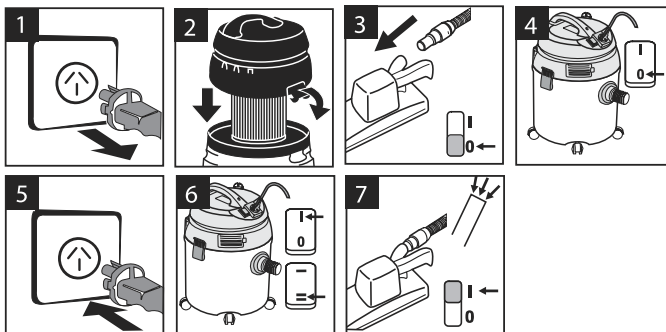


For dry-vacuuming, slip the pleated filter (Figure 2) onto the filter basket.

The pleated filter is suitable for dry-vacuuming only.

**Note:** The pleated filter needs to be changed periodically. Frequency of changing depends on use and material being vacuumed.

### 4. Automatic mode with tools



Maximum power outlet 1400 W  
Connect the electric tool to the integrated socket-outlet. Set the ON/OFF switch of the vacuum cleaner to position 1 (Figure 6).

The vacuum cleaner will switch on automatically as soon as you switch on the electric tool (Figure 7). When you switch off the electric tool, the vacuum cleaner will also switch off after a pre-set delay.



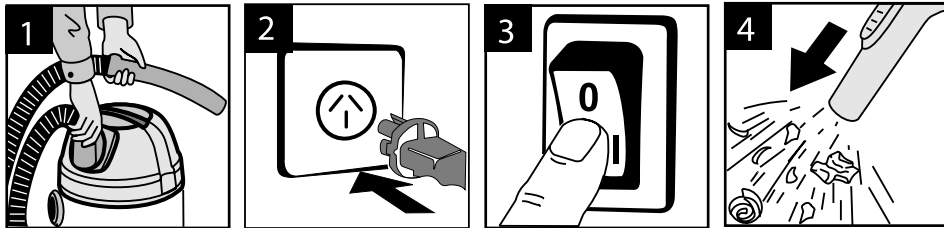
# QUICK START GUIDE

1000W

Wet and Dry Vacuum

BT-VC 1500 SA

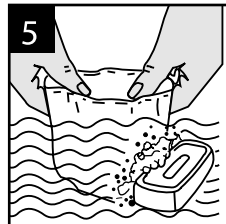
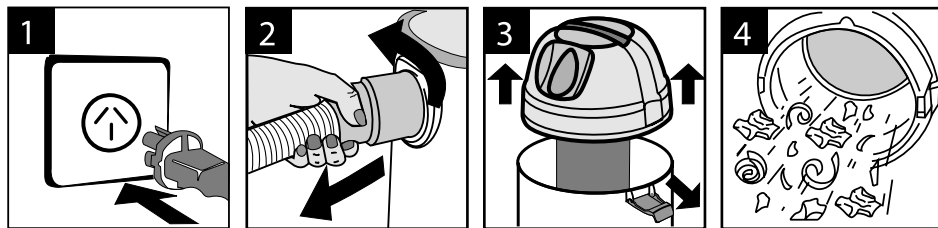
## 5. Blowing



For blowing, connect the suction hose to the blow connector as shown in Figure 1.

Plug in the vacuum cleaner and switch the ON/ OFF switch to position I: ON as shown in Figure 3.

## 6. Maintenance-cleaning



Always pull out the mains power plug before starting any cleaning work.  
Disconnect the suction hose.  
Undo the locking hooks on both sides and lift the head out of the container (Figure 3).  
Empty the container (Figure 4).  
Clean the foam filter with a little soft soap under running water and allow it to air-dry (Figure 5).  
Clean the pleated filter regularly by carefully patting it and cleaning it with a fine brush or hand

**Note:** The pleated filter needs to be changed periodically. Frequency of changing depends on use and material being vacuumed.

**PLEASE READ ALL INSTRUCTIONS BEFORE USING THE VACUUM CLEANER**