

MAINTENANCE

WARNING! BEFORE CLEANING YOUR MITRE SAW OR CARRYING OUT ANY MAINTENANCE PROCEDURE, MAKE SURE THAT THE MOTOR IS OFF AND THE TOOL DISCONNECTED FROM THE POWER SUPPLY TO PREVENT ACCIDENTAL STARTING.

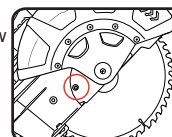
Changing the Blade

CAUTION! NEVER TRY TO USE A BLADE THAT IS LARGER THAN THE STATED CAPACITY OF THE MITRE SAW, IT MIGHT COME INTO CONTACT WITH THE BLADE GUARDS AND RISK PERSONAL INJURY OR DAMAGE TO THE MITRE SAW. THIS WILL NOT BE COVERED UNDER WARRANTY.

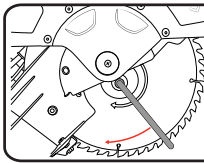
CAUTION! NEVER USE A BLADE THAT IS TOO THICK TO ALLOW THE OUTER BLADE WASHER TO ENGAGE WITH THE FLATS ON THE SPINDLE. IT WILL PREVENT THE BLADE SCREW FROM PROPERLY SECURING THE BLADE ONTO THE SPINDLE.

CAUTION! ENSURE THAT THE CORRECT BLADE BUSH THAT MAY BE REQUIRED SUITS THE SPINDLE AND BLADES THAT ARE FITTED.

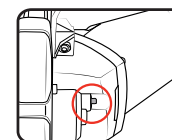
1. Ensure the plug is disconnected from the mains power supply.
2. Ensure the cutting head is raised. If the head lock down pin is locked in place, pull the head lock down pin and gently raise the cutting head.
3. Raise the lower guard out of the way and hold it.
4. Using the 5mm Hex Key loosen the guard cover screw until it disengages the blade bolt cover.
5. Swing the blade bolt cover up and out of the way to reveal the bolt head in the centre of the blade.



6. Place the 6mm Hex Key onto the blade bolt in the centre of the blade.

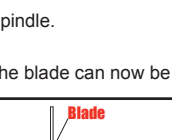


7. Depress the spindle lock button. To ensure it engages correctly, rotate the Hex Key until the spindle lock clicks into position.



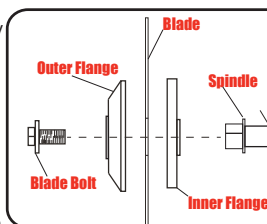
NOTE: The spindle lock button holds the blade in place when using the 6mm Hex Key to change the blade.

8. Loosen the bolt in the centre of the blade by turning the Hex Key clockwise as the blade bolt is a left hand thread.



NOTE: Make sure the inner flange stays in place on the spindle.

9. Remove the blade bolt followed by the outer flange. The blade can now be removed by pulling away from the spindle. Put it aside ready to use in the reassembly of the new blade.



10. Install the new blade over the spindle and onto the inner flange.

11. Replace the outer flange by placing the cupped side of the flange against the blade followed by the blade bolt.

12. Place the 6mm Hex Key provided onto the blade bolt in the centre of the blade.

13. Depress the spindle lock button. To ensure it engages correctly, rotate the Hex Key until the spindle lock clicks into position.

14. Tighten the blade bolt in the centre of the blade by turning the Hex Key anti-clockwise as the blade bolt is a left hand thread.

15. Swing the blade bolt cover back into place and secure it with the guard cover screw.

16. Make sure the lower guard operates smoothly and properly protects from the blade before using the saw.

WARNING! TO ENSURE THE CORRECT BLADE ROTATION ALWAYS INSTALL THE BLADE WITH THE BLADE TEETH POINTING DOWNWARDS. ENSURE THE ARROW DIRECTION ON THE BLADE CORRESPONDS WITH THE ARROW ON THE UPPER BLADE GUARD.

Transportation

The lock down pin is provided for holding the cutting head down whilst transporting or storing the mitre saw. The saw must never be used with the lock down pin locking the head down. Tighten the slide lock during transportation



Carbon Brushes

When the carbon brushes wear out, the mitre saw will spark and/or stop. Discontinue use as soon as this happens. They should be replaced prior to recommending use of the mitre saw. Carbon brushes are a wearing component of the mitre saw therefore not covered under warranty. Continuing to use the mitre saw when carbon brushes need to be replaced may cause permanent damage to the mitre saw. Carbon brushes will wear out after many uses but when the carbon brushes need to be replaced, take the mitre saw to an electrician or a power tool repairer for a quick and low cost replacement. Always replace both carbon brushes at the same time.

Note: Ozito Industries will not be responsible for any damage or injuries caused by the repair of the mitre saw by an unauthorised person or by mishandling of the mitre saw.

Sparking visible through the housing air vents

A small amount of sparking may be visible through the housing vents. This is normal and does not indicate a problem.

Fence Alignment

The fence holds the workpiece in a fixed position while the table and or the blade assembly are adjusted in a mitre or bevel angle.

To make accurate cuts, the Fence must be perpendicular (at a 90° angle) to the saw blade.

1. Before beginning work, make a test cut on a scrap material with the table set at 90°.

2. Check the cut with an accurate square. You can also reverse the two pieces, hold the cut ends together, and hold a good straight edge along the side of the pieces

3. If either test reveals that the cut is not a true 90° angle, adjust the fence before beginning work.

If Fence Needs Adjustment:

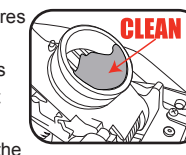
1. First unplug the tool
2. Lower the blade assembly and lock it in place using the Lock Down Pin.
3. Lay a carpenter's square on the turn table one edge along the blade and the other along the fence. Any inaccuracy should be visible. Note: The square must contact the blade, not the teeth, for an accurate reading.

4. The fence is held in place with bolts at each end. Loosen the bolts slightly and, gently tap the fence into position using a soft mallet. Retighten the bolts and make another test cut. Repeat the process until the fence is adjusted accurately.

5. Once the fence is accurately adjusted, tighten the bolts firmly in place. Recheck one last time, then proceed to work.

Dust Bag

Dust extraction port can block easily with dust and requires to be periodically cleaned. For more efficient operation, empty the dust bag when it is no more than half full. This allows better air flow through the bag. Dust bags will not collect all the saw dust generated by the mitre saw. For best results a dust extractor should be used in place of the dust bag.



SERVICE INFORMATION

Please note that the following parts of this product are subject to normal or natural wear and that the following parts are therefore also required for use as consumables.

Category	Example
Wear parts*	Carbon brushes
Consumables*	Saw blade
Missing parts	

* Not necessarily included in the scope of delivery!

TROUBLESHOOTING

PROBLEM	CAUSE	REMEDY
Mitre Saw will not start	No power at power point. Cord not connected.	Check power point switch On. Check that the cord is plugged in.
Mitre saw operates erratically or at low power.	Low power supply or improper extension cord. Worn or cracked Carbon Brushes.	Inspect power supply or power cords. Inspect Carbon Brushes. Replace if damaged or worn
Wood burns at ends of cut.	Dirty blade Material is binding.	Clean blade using blade cleaner or mineral spirits. Check position of workpiece on table. Material must be flat, flush against fence and supported on ends.
Workpiece frays or chips out	Finished side is down. Blade chipped or dull. Blade inappropriate for material.	Keep finished side of workpiece up or facing operator. Check for damaged teeth. Sharpen or replace blade. Check blade manufacturer's recommendations for material being cut. For cross cutting hardwood and for precision cuts use a thin kerf blade with 60 or more teeth.
Blade binds, slowing or stopping saw	Workpiece is misaligned on the end or ends are not supported. Workpiece is wet, contaminated or inappropriate blade is being used.	Workpiece must be flat on table, flush against the fence and supported on both ends. Check condition of workpiece and check compatibility of blade to workpiece.
Blade does not cut completely through workpiece	Depth Stop setting in use. Depth Stop set too shallow.	Move Depth Stop to right to disengage. Adjust Depth Stop Bolt for desired depth of cut.

SPARE PARTS

Spare parts can be ordered from the Special Orders Desk at your local Bunnings Warehouse or Homebase store. For further information, or any parts visit www.ozito-diy.co.uk or contact Ozito Customer Service: Great Britain: 0151 294 4488 Ireland: 1850 882711 E-mail: info@ozito-diy.co.uk

DESCRIPTION OF SYMBOLS

Danger! Read the operating instructions to reduce the risk of injury.

Double insulated / Protection class II

Caution! Wear ear-muffs. The impact of noise can cause damage to hearing.

Caution! Wear a breathing mask. Dust which is injurious to health can be generated when working on wood and other materials. Never use the device to work on any materials containing asbestos!

Caution! Wear safety goggles. Sparks generated during working or splinters, chips and dust emitted by the device can cause loss of sight.

Caution! Risk of injury! Do not reach into the running saw blade.



Warning! The adjustable stop rails are secured by hex screws. To make mitre cuts (with the saw head inclined or the turntable set at an angle), the adjustable stop rails must be fixed at an outer position. For 45° crosscuts to the left, the left stop rail must be pushed outwards and screwed tight. For 45° crosscuts to the right, the right-hand stop rail must be pushed outwards and screwed tight. To make 90° crosscuts, the adjustable stops rail must be fixed at the inner position!



For EU countries only
Never place any electric power tools in your household refuse.

To comply with European Directive 2012/19/EC concerning old electric and electronic equipment and its implementation in national laws, old electric power tools have to be separated from other waste and disposed of in an environment-friendly fashion, e.g. by taking to a recycling depot.

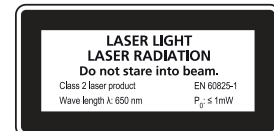
Recycling alternative to the return request: As an alternative to returning the equipment to the manufacturer, the owner of the electrical equipment must make sure that the equipment is properly disposed of if he no longer wants to keep the equipment. The old equipment can be returned to a suitable collection point that will dispose of the equipment in accordance with the national recycling and waste disposal regulations. This does not apply to any accessories or aids without electrical components supplied with the old equipment.

The reprinting or reproduction by any other means, in whole or in part, of documentation and papers accompanying products is permitted only with the express consent of the ISC GmbH.

Subject to technical changes

Special information about the laser

Caution! Laser radiation
Do not look into the beam
Laser class 2



- Never look directly into the laser path.
- Never direct the laser beam at reflecting surfaces or persons or animals. Even a low output laser beam can inflict injury on the eye.
- Caution: It is vital to follow the work procedures described in these instructions. Using the equipment in any other way may result in hazardous exposure to laser radiation.
- Never open the laser module.
- It is prohibited to carry out any modifications to the laser to increase its power.
- The manufacturer cannot accept any liability for damage due to non-observance of the safety information.

SOUND & VIBRATION

Sound and vibration values were measured in accordance with EN 60745.

L _p sound pressure level:	100.0 dB
K _p uncertainty:	3 dB
L _w sound power level:	106.0 dB
K _w uncertainty:	3 dB

Vibration emission value ah = 2.7 m/s²
K uncertainty = 1.5 m/s²

Wear ear-muffs.
The impact of noise can cause damage to hearing.

Total vibration values (vector sum of three directions) determined in accordance with EN 60745.

Additional information for electric power tools
Warning!

The specified vibration value was established in accordance with a standardized testing method. It may change according to how the electric equipment is used and may exceed the specified value in exceptional circumstances.
The specified vibration value can be used to compare the equipment with other electric power tools. The specified vibration value is useful for initial assessment of a harmful effect.

Keep the noise emissions and vibrations to a minimum.

- Only use appliances which are in perfect working order.
- Service and clean the appliance regularly.
- Adapt your working style to suit the appliance.
- Do not overload the appliance.
- Have the appliance serviced whenever necessary.
- Switch the appliance off when it is not in use.
- Wear protective gloves.

DECLARATION OF CONFORMITY

ISC GmbH - Eschenstraße 6 - D-94405 Landau/Isar



explains the following conformity according to EU directives and norms for the following product:

Sliding Mitre Saw SCMS-8STANDU (Ozito)

<input type="checkbox"/> 2014/29/EU	<input checked="" type="checkbox"/> 2006/42/EC
<input type="checkbox"/> 2005/32/EC, 2009/125/EC	<input type="checkbox"/> Annex IV Notified Body: Notified Body No.:
<input type="checkbox"/> 2014/53/EU	<input type="checkbox"/> 2006/28/EC
<input type="checkbox"/> 2006/28/EC	<input type="checkbox"/> 2014/30/EU
<input checked="" type="checkbox"/> 2014/29/EU	<input checked="" type="checkbox"/> 2001/42/EC, 2005/58/EC
<input type="checkbox"/> 2014/32/EU	<input type="checkbox"/> Annex V
<input type="checkbox"/> 2014/53/EC	<input type="checkbox"/> Annex VI
<input type="checkbox"/> 2014/68/EU	Noise measured L _{WA} = 97.2 dB (A); guaranteed L _{WA} = 100 dB (A)
<input type="checkbox"/> 90/269/EC, 2009/142/EC	P _{st} KW L ₁₀ = cm Notified Body:
<input type="checkbox"/> 89/686/EC, 96/58/EC	<input type="checkbox"/> 2012/48/EU Emission No.:
<input checked="" type="checkbox"/> 2011/65/EU	

Standard references: EN 61029-1; EN 61029-2-9; EN 60825-1
EN 55014-1; EN 55014-2; EN 61000-3-2; EN 61000-3-11

Landau/Isar, den 24.01.2018

First CE 17
Art.-No.: 30.003.16 L-No.: 11017
Subject to change without notice

Archive-File/Record: NAPRO1835
Documents registrar: Ana Kurtz
Wiesengrund 22, D-94405 Landau/Isar

ELECTRICAL SAFETY

WARNING! When using mains-powered tools, basic safety precautions, including the following, should always be followed to reduce risk of fire, electric shock, personal injury and material damage.

Read the whole manual carefully and make sure you know how to switch the tool off in an emergency, before operating the tool.

Save these instructions and other documents supplied with this tool for future reference. Before you connect the equipment to the mains supply make sure that the data on the rating plate are identical to the mains data.

This tool is double insulated therefore no earth wire is required.

GENERAL POWER TOOL SAFETY WARNINGS - PERSONAL SAFETY

WARNING! When using electric tools, basic safety precautions should always be followed to reduce the risk of fire, electric shock and personal injury, including the following.

1. **Keep work area clean** - Cluttered areas and benches invite injuries.
2. **Consider work area environment** - Don't expose power tools to rain. Don't use power tools in damp or wet locations. Keep work area well lit.
3. **Don't use power tools in presence of flammable liquids or gases.**
4. **Guard against electric shock** - Prevent body contact with grounded surfaces (e.g. pipes, radiators, ranges refrigerators).
5. **Keep children away** - Do not let visitors contact tool or extension cord. All visitors should be kept away from work area.
6. **Store idle tools** - When not in use, tools should be stored in dry, high, or locked-up place, out of the reach of children.
7. **Don't force tool** - It will do the job better and safer at the rate for which it was intended.
8. **Use right tool** - The manufacturer cannot accept any liability for damage due to non-observance of the safety information.
9. **Don't wear loose clothing or jewelry.** They can be caught in moving parts. Rubber gloves and nonskid footwear are recommended when working outdoors. Wear protective hand covering to contain long hair.
10. **Use safety glasses** - Also use face or dust mask if cutting operation is dusty.
11. **Don't abuse cord** - Never carry tool by cord or yank it to disconnect it from receptacle. Keep cord from heat, oil and sharp edges.
12. **Secure work** - Use clamps or a vice to hold work. It's safer than using your hand and it frees both hands to operate tool.
13. **Don't overreach** - Keep proper footing and balance at all times.

MITRE SAW SAFETY WARNINGS

1. **Safety precautions**
 - Blades that are deformed or cracked must not be used.
 - If the table insert is worn, replace it.
 - Use only blades which are recommended by the manufacturer and comply with EN 847-1.
 - Make sure that the chosen blade is suitable for the material that is to be cut.
 - If necessary, wear suitable personal protection equipment. This could consist of: - Ear plugs to prevent the risk of damaging your hearing - A breathing mask to avoid the risk of inhaling hazardous dust - Always wear gloves when handling saw blades and saw materials. Whenever practicable, saw blades must be carried in a container.
 - The following can have an influence on dust development: - Worn, damaged or cracked saw blades - Recommended capacity of the vacuum extraction system: 20 m³ - Proper guidance of the workpiece
 - Blades made of high-alloy high-speed steel (HSS) must not be used.
 - Keep the push stick or hand rest for a push block at the machine at all times, even when you are not using them.
2. **Maintenance and service**
 - The following conditions can have an influence on noise impact on the operator: - Type of saw blade (e.g. saw blades designed to reduce noise development) - Material of the workpiece - The force with which the workpiece is pushed against the saw
 - Faults on the machine or its guards, safety devices and blade must be reported to the person in charge as soon as they are discovered.
3. **Safe operation**
 - Select a suitable blade for the material you wish to saw.
 - Never use the drag, crosscut and miter saw to cut any materials other than those specified by the manufacturer.
 - Use only the transport devices to move the equipment. Never use the guards for handling or moving the equipment.
 - Use the safety only if the guards are correctly positioned and only if the saw is in perfect condition and has been properly serviced.
 - When cutting miters, make sure that the device for swiveling the arm is fastened securely.
 - The floor around the machine must be level, clean and free of loose particles, such as chips and cutting residues.
 - Make sure the workplace and the room are sufficiently illuminated.
 - The operator must receive proper training in the use, adjustment and operation of the machine.
 - Only use properly sharpened saw blades. Do not exceed the maximum speed specified on the blade.
 - Be sure to use only spacers and spindle rings which are specified by the manufacturer as suitable for the intended purpose.

- Carry out retooling work, adjustments, measurements and cleaning jobs only when the motor is switched off. Pull out the power plug!
- Switch off the motor and pull the power plug before you leave the workplace.
- Damaged or faulty safety devices have to be replaced immediately.
- Damaged safety devices and parts must be repaired or replaced by an authorized service center.
- Have damaged switches replaced by a customer service workshop.
- This tool complies with the pertinent safety regulations. Only a qualified electrician using original replacement parts is allowed to carry out repairs. Failure to observe this point may result in accidents for the user.
- Refit all guards and safety devices immediately after you have completed any repairs or maintenance work. Be sure to observe the safety information and operating and maintenance instructions issued by the manufacturer, as well as the dimensions listed in the Technical Data.
- It is imperative to observe the accident prevention regulations in force in your area as well as all other generally recognized rules of safety.
- Operation in enclosed areas is permitted only with a suitable vacuum extraction system.
- Do not use any low-powered machines for heavy duty work.
- Do not use the cable for purposes for which it is not designed!
- Check that the moving parts are in good working order, that they do not jam, and that no parts are damaged. Make sure that all parts are fitted correctly and that all other operating conditions are properly fulfilled.
- Caution: Take extra care when making double miter cuts!
- Do not carry the saw by its power cable.

If the supply cord is damaged, it must be replaced by an electrician or a power tool repairer in order to avoid a hazard.

Note: Double insulation does not take the place of normal safety precautions when operating this tool. The insulation system is for added protection against injury resulting from a possible electrical insulation failure within the tool.
Using an Extension Lead
Always use an approved extension lead suitable for the power input of this tool. Before use, inspect the extension lead for signs of damage, wear and ageing. Replace the extension lead if damaged or defective. When using an extension lead on a reel, always unwind the lead completely. Use of an extension lead not suitable for the power input of the tool or which is damaged or defective may result in a risk of fire and electric shock.

13. **Maintain tools with care** - Keep tools sharp and clean for better and safer performance. Follow instructions for lubricating and changing accessories. Inspect tool cords periodically and, if damaged, have repaired by authorized service facility. Inspect extension cords periodically and replace if damaged. Keep handles dry, clean and free from oil and grease.
14. **Disconnect tools** - When not in use, before servicing, and when changing accessories such as blades, bits and cutters.
15. **Remove adjusting keys and wrenches** - Form the habit of checking to see that keys and adjusting wrenches are removed from tool before turning it on.
16. **Avoid unintentional starting** - Don't carry plugged-in tool with finger on switch. Be sure switch is off when plugging in.
17. **Outdoor use extension cords** - When tool is used outdoors, use only extension cords intended for use outdoors and so marked.
18. **Stay alert** - Watch what you are doing. Use common sense. Do not operate tool when you are tired.
19. **Check damaged parts** - Before further use of the tool, a guard or other part that is damaged should be carefully checked to determine that it will operate properly and perform its intended function. Check for alignment of moving parts, binding of moving parts, breakage of parts, mounting, and any other conditions that may affect its operation. A guard or other part that is damaged should be properly repaired or replaced by an authorized service center unless otherwise indicated elsewhere in this instructions manual. Have defective switches replaced by an authorized service center. Do not use tool if switch does not turn it on and off.
20. **Warning** - The use of any other accessory or attachment other than recommended in this operating instruction or the may present a risk of personal injury.
21. **Have your tool repaired by an expert** - This electric appliance is in accordance with the relevant safety rules repairing of electric appliances may be carried out only by experts otherwise it may cause considerable danger for the user.
22. **Connect the dust extraction device** - Wherever there are facilities for fitting a dust extraction system, make sure it is connected and used.

- Operators have to be at least 18 years of age. Trainees of at least 16 years of age are allowed to use the machine under supervision.
- Keep children away from the machine when it is connected to the power supply.
- Check the power cable. Never use a faulty or damaged power cable.
- Keep your workplace clean of wood scrap and any unnecessary objects.
- Persons working on the machine should not be distracted.
- After you have switched off the motor, never slow down the saw blade by applying pressure to its side.
- Only fit blades which are well sharpened and have no cracks or deformations.
- Faulty saw blades must be replaced immediately.
- Never use saw blades which do not comply with the data specified in this manual.
- Note the direction of rotation of the motor and saw blade.
- It is imperative to make sure that the arrow (direction of rotation) on the saw blade conforms with the arrow on the machine.
- Pull out the power plug and twist the blade with your hand into the 45° and 90° positions in order to make sure that the blade does not touch the turntable in any position. If necessary, readjust the saw head.
- It is imperative to make sure that all devices which check the saw blade are in good working order.
- Never wedge the hinged guard hood in open position.
- Never dismantle the machine's safety devices or render them inoperative.
- Never cut workpieces which are too small to clamp securely on the saw table.
- Avoid placing your hands in hazardous positions in which one or both hands could touch the saw blade if they slip suddenly.
- There must be no nails or other foreign bodies in the workpiece.
- Always stand to the side of the saw blade when working with the saw.
- Never use the machine so much that it cuts out.
- Always clamp the workpiece securely on the saw table with a workpiece clamping device in order to prevent the workpiece wobbling or twisting.
- Ensure that the off-cuts can be removed to the side of the saw blade. Otherwise it is possible that they will be caught by the saw blade and be catapulted out of the machine.
- Never saw more than one workpiece at any one time.
- Never remove loose splinters, chips or jammed pieces of wood when the saw blade is running.
- To rectify faults or remove jammed pieces of wood, always switch off the machine first. Pull out the power plug!
- Carry out retooling work, adjustments, measurements and cleaning jobs only when the motor is switched off. Pull out the power plug!
- Switch off the motor and pull the power plug before you leave the workplace.
- Damaged or faulty safety devices have to be replaced immediately.
- Damaged safety devices and parts must be repaired or replaced by an authorized service center.
- Have damaged switches replaced by a customer service workshop.
- This tool complies with the pertinent safety regulations. Only a qualified electrician using original replacement parts is allowed to carry out repairs. Failure to observe this point may result in accidents for the user.
- Refit all guards and safety devices immediately after you have completed any repairs or maintenance work. Be sure to observe the safety information and operating and maintenance instructions issued by the manufacturer, as well as the dimensions listed in the Technical Data.
- It is imperative to observe the accident prevention regulations in force in your area as well as all other generally recognized rules of safety.
- Operation in enclosed areas is permitted only with a suitable vacuum extraction system.
- Do not use any low-powered machines for heavy duty work.
- Do not use the cable for purposes for which it is not designed!
- Check that the moving parts are in good working order, that they do not jam, and that no parts are damaged. Make sure that all parts are fitted correctly and that all other operating conditions are properly fulfilled.
- Caution: Take extra care when making double miter cuts!

Please keep these safety instructions in a safe place

ozito

DOUBLE BEVEL SLIDE COMPOUND MITRE SAW

210mm (8 1/4")

ORIGINAL INSTRUCTIONS

SPECIFICATIONS

Voltage: 230V ~ 50Hz
Motor: 1800W (52 5min), 1500W (S1)

No Load Speed: 5,000/min
Blade: Ø210 x Ø30 x 2.8mm (48TCT)

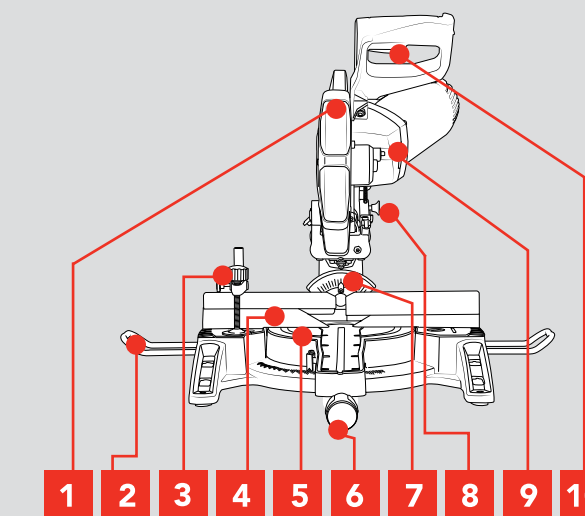
Mitre Angle: 0-45° left & right
Bevel Angle: 0-45° left & right

Max. Cutting Capacity:
Mitre 0° x Bevel 90°: 62 x 310mm
Mitre 0° x Bevel 45°: 36 x 310mm
Mitre 45° x Bevel 45°: Left 36

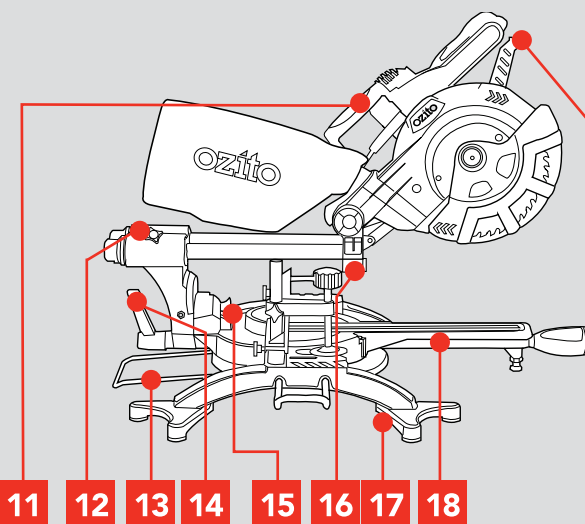
KNOW YOUR PRODUCT

MITRE SAW

- Retractable Safety Guard
- Material Support Bar
- Material Clamp
- Fence
- Mitre Table
- Mitre Table Lock
- Bevel Angle Pointer
- Lock Down Pin
- Spindle Lock Button
- Trigger



- Carry Handle
- Slide Lock
- Stabilising Bar
- Bevel Lock
- Bevel Release
- Laser Guide
- Additional Support Feet
- Table Insert
- Release Lever



ONLINE MANUAL

Scan this QR Code with your mobile device to take you to the online manual.



SETUP & PREPARATION

1. BEFORE USE

Items Supplied

Please check that the article is complete as specified in the scope of delivery. If parts are missing, please contact our service center or the sales outlet where you made your purchase at the latest within 5 working days after purchasing the product and upon presentation of a valid bill of purchase. Also, refer to the warranty table in the service information at the end of the operating instructions.

- Open the packaging and take out the equipment with care.
- Remove the packaging material and any packaging and/or transportation braces (if available).
- Check to see if all items are supplied.
- Inspect the equipment and accessories for transport damage.
- If possible, please keep the packaging until the end of the guarantee period.

Danger!

The equipment and packaging material are not toys. Do not let children play with plastic bags, foils or small parts. There is a danger of swallowing or suffocating!

Proper Use

The drag, crosscut and mitre saw is designed for cross-cutting wood and wood-type materials which are appropriate for the machine's size. The saw is not designed for cutting firewood.

The equipment is to be used only for its prescribed purpose. Any other use is deemed to be a case of misuse. The user / operator and not the manufacturer will be liable for any damage or injuries of any kind caused as a result of this.

Please note that our equipment has not been designed for use in commercial, trade or industrial applications. Our warranty will be voided if the machine is used in commercial, trade or industrial businesses or for equivalent purposes.

Caution! Residual risks

Even if you use this electric power tool in accordance with instructions, certain residual risks cannot be ruled out. The following hazards may arise in connection with the equipment's construction and layout:

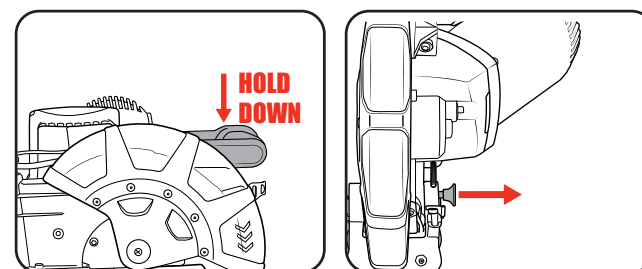
1. Lung damage if no suitable protective dust mask is used.
2. Damage to hearing if no suitable ear protection is used.
3. Health damage caused by hand-arm vibrations if the equipment is used over a prolonged period or is not properly guided and maintained.

2. ASSEMBLY

WARNING! ENSURE THE TOOL IS SWITCHED OFF AND DISCONNECTED FROM THE POWER SUPPLY BEFORE PERFORMING ANY OF THE FOLLOWING PROCEDURES.

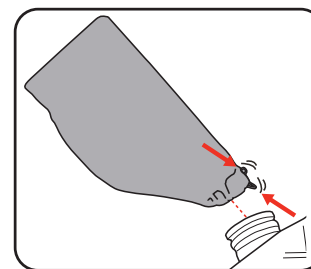
Unpacking

1. Remove foam packaging materials and using the carry handle, carefully lift the mitre saw from its box and place it on a level work surface.
2. Release cutting head from its transport position. While holding the head of the saw down release the lock down pin.



Dust Bag

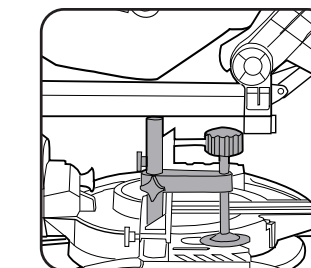
1. Squeeze the clamp at the end of the dust bag, place over the dust extraction port.



Material Clamp

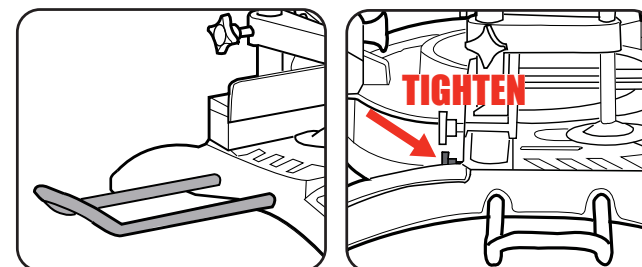
Material clamp will assist securing timber when making cuts.

Note: The clamp can be mounted on either the left or right.



Material Support Bars

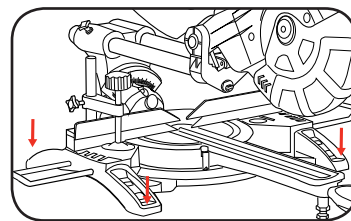
1. Insert each bar into the two holes located on both sides of the base.
2. Tighten screw when in place.



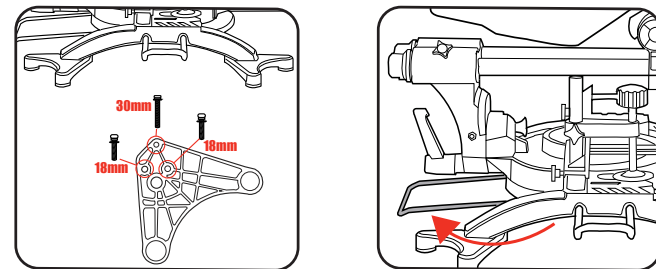
3. SET-UP AND ADJUSTMENTS

Bench Mounting

The base of the saw has four bench mounting holes (1 each corner) that can be used to mount it to a workbench or mitre saw stand. Use four screws or bolts (not included) to secure.

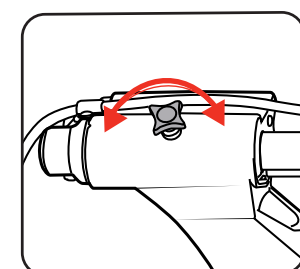


To ensure the saw is standing securely when not mounting to a workbench or mitre saw stand. Screw the Additional Support Feet to the feet of the mitre saw with the fasteners provided. Then swing out the Stabilising Bar to the rear until it engages.



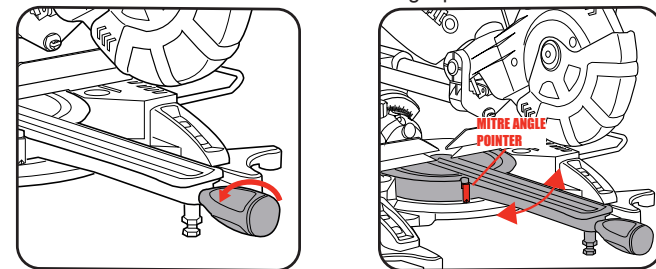
Slide Lock

When cutting a narrow piece of wood it is not necessary to use the slide mechanism. In these circumstances, push back the cutting head and ensure the slide locking knob is tight to prevent the cutting head from sliding.



Mitre Angle Adjustment

1. Loosen mitre table lock
2. Rotate the mitre table to the desired mitre angle (left or right) as shown by the mitre angle pointer



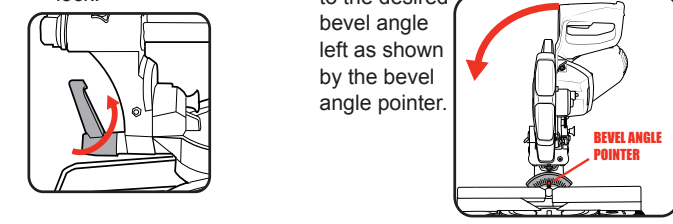
Note: The mitre table features positive click stops at 0°, 15°, 22.5°, 31.6° and 45° for quick setting of common mitre angles.

3. Tighten mitre table lock at selected angle

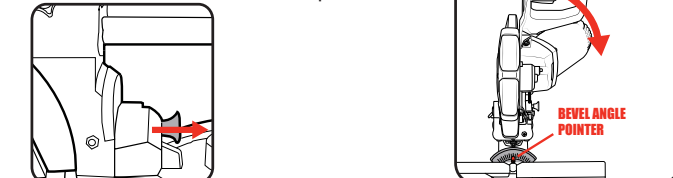
WARNING! ENSURE THE MITRE TABLE LOCK IS TIGHT BEFORE MAKING A CUT. FAILURE TO DO SO MAY RESULT IN THE MITRE TABLE MOVING DURING OPERATION AND CAUSE SERIOUS PERSONAL INJURY.

Bevel Angle Adjustment

1. Loosen bevel lock.
2. **BEVEL LEFT** - Tilt the cutting head to the desired bevel angle left as shown by the bevel angle pointer.



- 2a. **BEVEL RIGHT** - Tilt the cutting head slightly LEFT then pull the bevel release.
- 2b. Tilt the cutting head to the desired bevel angle right as shown by the bevel angle pointer.



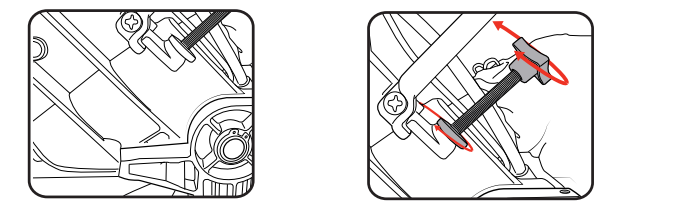
3. Tighten bevel lock at selected angle

WARNING! ENSURE THE BEVEL LOCK IS TIGHT BEFORE MAKING A CUT. FAILURE TO DO SO MAY RESULT IN THE CUTTING HEAD MOVING DURING OPERATION AND CAUSE SERIOUS PERSONAL INJURY.

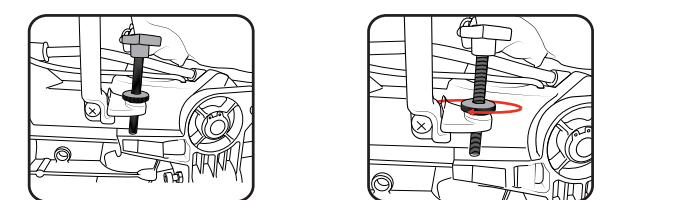
Trenching

Trenching refers to restricting the depth of cut and permits a "trench" to be cut in the workpiece.

1. Ensure the cutting head is raised, move the trenching stop to the right as far as it will go.
2. To adjust the trenching depth rotate the trenching depth adjustment screw.

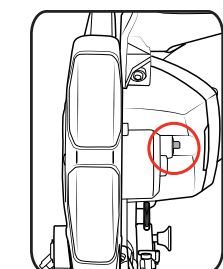


3. To check that the blade stops at the desired position, lower the cutting head until the trenching stop adjustment screw touches the trenching stop.
4. When the correct depth is set. Lock it in position using the trenching depth lock nut.



Spindle Lock

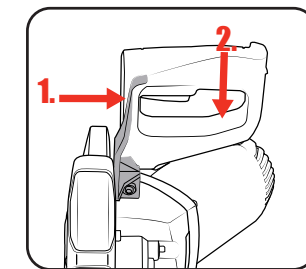
The spindle lock prevents the blade in the saw from rotating. Depress and hold the spindle lock while installing, changing, or removing the blade. Never press when blade is rotating.



Retractable Safety Guard

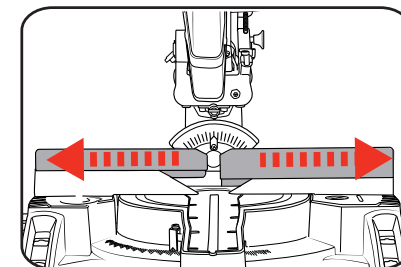
The lower guard provides protection to your hands and limbs when the mitre saw head is in the up position. During the operation of the saw, when the saw is turned on and you are making a cut, the lower guard retracts over the upper guard as the saw is lowered into the work piece.

1. To retract the lower guard, slide the release lever right with your thumb and press handle down.



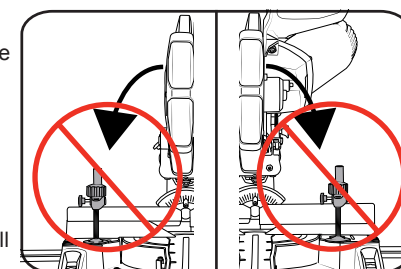
Fence

Make sure that no part of the tool contacts the upper fence when bevel or compound mitre cutting. Always make a dry run with the saw turned off and check clearance. Tighten securely before making a cut.



Material Clamp

Depending on the cut, the material clamp will need to be mounted on the appropriate side. When performing bevel cuts, the work clamp must be on the opposite side of the bevel (otherwise it will interfere with the cutting action).



OPERATION

4. TYPES OF CUTS

CAUTION! DO NOT USE THE MITRE SAW TO CUT METAL OR MASONRY.

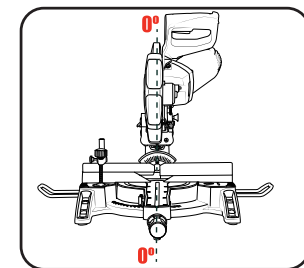
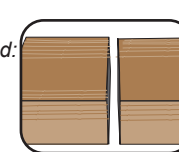
The tool is recommended for use with a residual current device with a rated residual current of 30mA or less.

When cutting a narrow piece of wood, it is not necessary to use the slide mechanism.

Straight Cutting

A straight cut is made by cutting the grain of the workpiece. A 90° straight cut is made with the mitre scale set in the 0°.

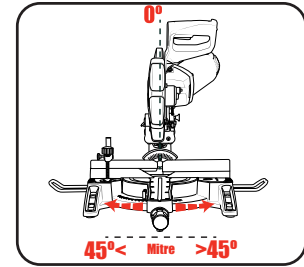
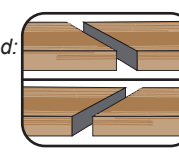
Max. cutting capacity wood: 62 x 310mm



Mitre Cuts

Mitre cuts are made with the mitre scale set at an angle other than 0°

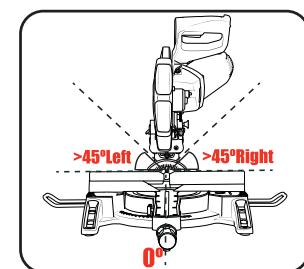
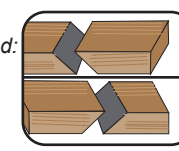
Max. cutting capacity wood: 62 x 210mm



Bevel Cutting

A bevel cut is made by cutting across the grain of the workpiece with the blade angled to the mitre table.

Max. cutting capacity wood: 36 x 310mm

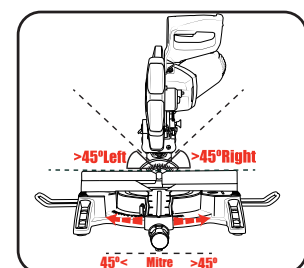
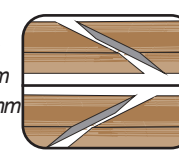


Note: For Bevel Cuts ensure the rear fence is adjusted for blade clearance.

Compound Mitre Cuts

A compound mitre cut involves using a mitre angle and a bevel angle at the same time.

Max. cutting capacity wood: left 36 x 210mm right 20 x 210mm

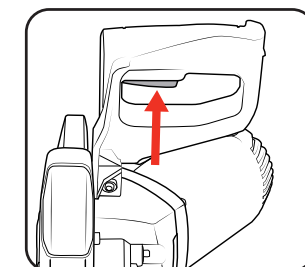


CAUTION! FOR ALL TYPES OF CUTS ENSURE THE SAW IS LOCKED INTO POSITION.

5. OPERATING THE SAW

Turning On and Off

1. To turn the mitre saw on, squeeze the trigger switch
2. To turn the mitre saw off, release the trigger switch



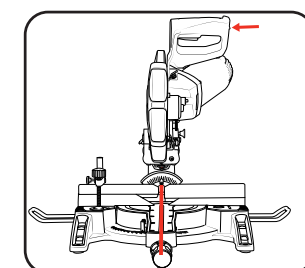
Note: Before performing a cut, ensure the blade is at full speed. Failure to do this may cause the blade to become blunt and cause the blade to lock-up.

Laser Guide

WARNING! DO NOT STARE DIRECTLY AT THE LASER BEAM.

A laser line is projected onto the material you wish to cut, providing an exact guide for the cut.

1. To switch the laser guide on, press the laser guide switch to the On (I) position.
2. To switch the laser guide off, press the laser guide switch to the Off (0) position.

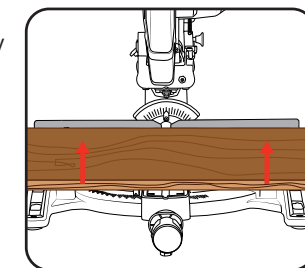


Note: Ensure that the laser guide is switched off when the saw is not in use.

Workpiece

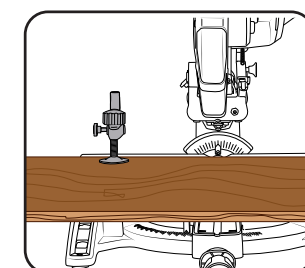
Place the workpiece flat on the mitre table with one edge securely against the rear fence.

Note: If the workpiece is warped, ensure the concave (curves inward) side is against the rear fence.



Material Clamp

It is extremely important to always secure the workpiece properly and tightly with the material clamp.



3 YEAR REPLACEMENT WARRANTY