

**Economical and powerful  
for universal use!**

**Einhell®**

**NEW GENERATION**

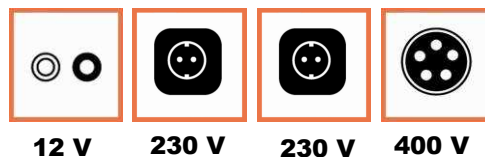
**Tank capacity 13.3 Litres**



This "power station" supplies energy and provides security.

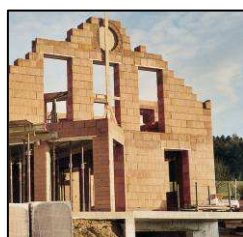
Power will be available whenever it is needed. Power failures or insufficient current supply are no longer a problem; whether during camping, at building sites, in homes or cottages, on boats or in the garden. **This equipment can be used nearly everywhere, and, with its continuous power supply of 4,200 Watt, provides sufficient power for many applications. The large 13.3-litre tank ensures continuous operation for eleven hours at 2/3 load.** The power generator is powered by a high-quality diesel engine and is equipped with an overload switch.. With this power generator you are optimally equipped, regardless if it should be powered with 12V, 230V or 400V. With the economically diesel engine is the STE 5000 D a cheap alternative to petrol driven power generators.

**Power: 6.3kW / 8.6 HP**



Starter battery not included in delivery

Manufacturer	Type	V	Ah
Varta	53030	12 V	30 Ah
Bayern Batterien	53030	12 V	30 Ah
Exide	53030	12 V	30 Ah
Banner Batterien	53030	12 V	30 Ah



**STE 5000 D Power Generator**

**Logistic Information:**

**Type:** STE 5000 D  
**Art.-No.:** 41.523.50  
**Ident.-No.:** 01037 / 01  
**Bar Code:** 4006825 531091  
**Packing:** 1,040 x 585 x 965 mm

**Sales unit:** 1 pc  
**20``:** 40 pcs  
**40``:** 80 pcs  
**Weight:** 200 kgs (gross)



Abbildungen können nicht im Serien-Lieferumfang enthaltenes Zubehör darstellen / Illustrations can contain accessories, which are not included in standard extent of delivery. Abbildungen ähnlich, produktionsbedingte Abweichung vorbehalten / Illustration similar (in design), production-wise modifications reserved.

File: S:\shared-pool\Product-Dokumentation\T-Produktbeschreibung\30\_n01\Originale\_Englisch\_PA04\4152350\_01037.doc

Erstelldatum/create date: 01.08.2007 09:03:00Aktualisiert/up dated: 05.03.2008

# Economical and powerful for universal use!

# Einhell®

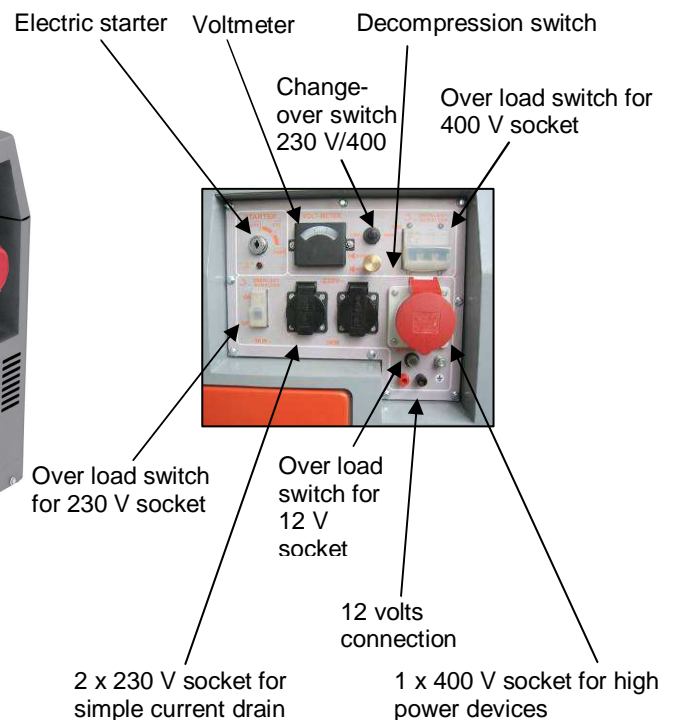
## NEW GENERATION

Large 13.3-litre tank for continuous power

Helpful tank level indicator

Push handle for easy transport

High grade wheels for easy transport



### Features:

- Economically diesel engine
- Large 13.3-litre tank for continuous power
- Overload assurance for 12V
- Over load switch for equipment reliability
- 2 x 230 V socket for simple current drain
- 1 x 400 V socket for high power devices
- 1 x 12 V connection
- Changeover switch 230 V/400 V
- Voltmeter
- Helpful tank level indicator
- Electric starter
- Decompression switch
- Oil deficiency safety device to protect the motor
- High grade wheels and push handle for easy transport

### Technical Data:

- Generator: Synchrony
- Continuous Power (S1): 4,200 watts at 400 V  
or: 3,000 watts at 230 V
- Max. Power (S2 5 min): 5,000 watts at 400 V  
or: 3,300 watts at 230 V
- Voltage: 2 x 230 V 1 ~ / 1 x 400 V 3 ~  
1 x 12 V d.c.
- Frequency: 50 Hz
- Type: Diesel engine
- Cylinder capacity: 418 cm<sup>3</sup>
- Max. Motor power: 6.3 kW / 8.6 HP
- Fuel: Diesel
- Tank capacity: 13.3 l
- Running time at 2/3 loads: Approx. 11 hours
- Noise level L<sub>wa</sub>: 96 dB (A)

### Logistic Information:

<b>Type:</b>	<b>STE 5000 D</b>	<b>Tool:</b>	<b>Power Generator</b>
<b>Art.-No.:</b>	41.523.50	<b>Sales unit:</b>	1 pc
<b>Ident-No.:</b>	01037 / 01	<b>20`:`</b>	40 pcs
<b>Bar Code:</b>	4006825 531091	<b>40`:`</b>	80 pcs
<b>Packing:</b>	1.040 x 585 x 965 mm	<b>Weight:</b>	200 kgs (gross)

