

GB **Operating Instructions
High-Pressure Cleaner**

Einhell[®]
NEW GENERATION



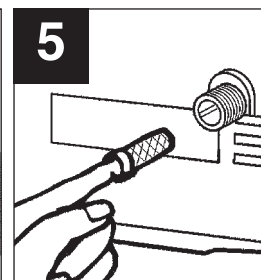
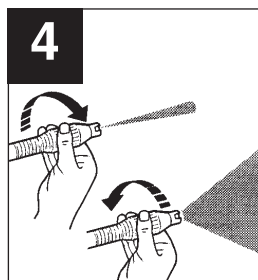
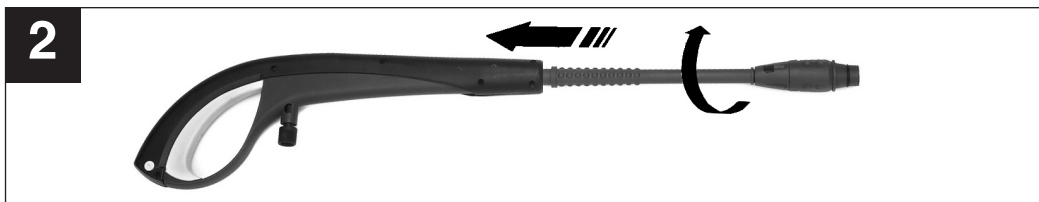
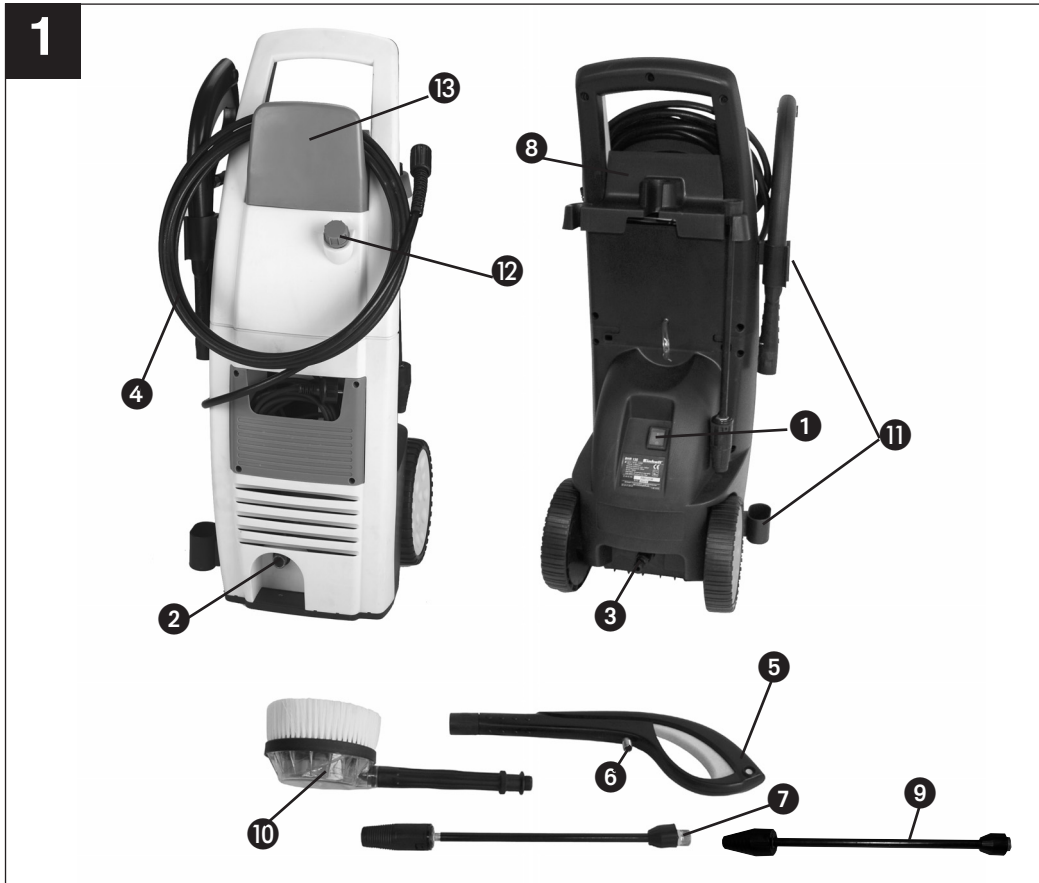
GB **Please read these instructions carefully before
installing and operating the high-pressure cleaner!**

7

Art.-Nr.: 41.404.39

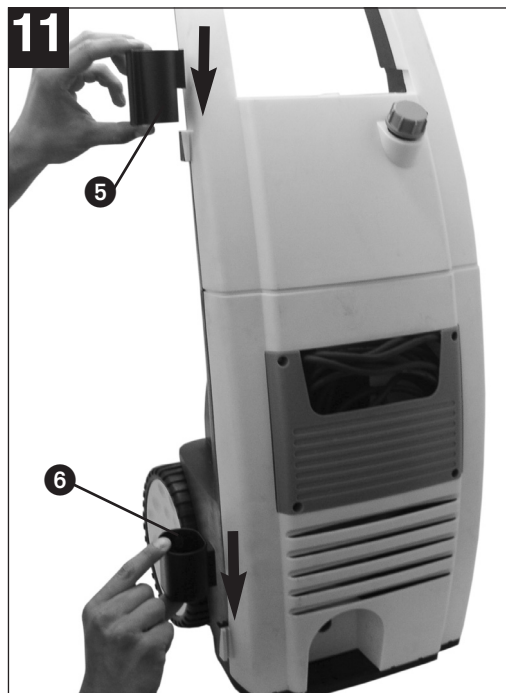
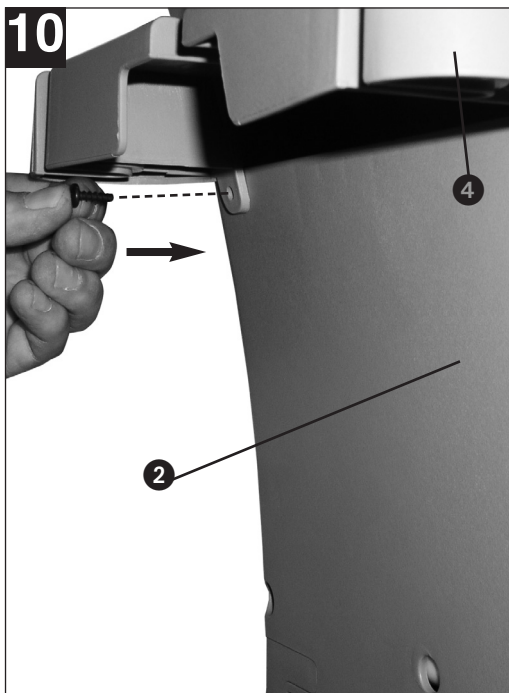
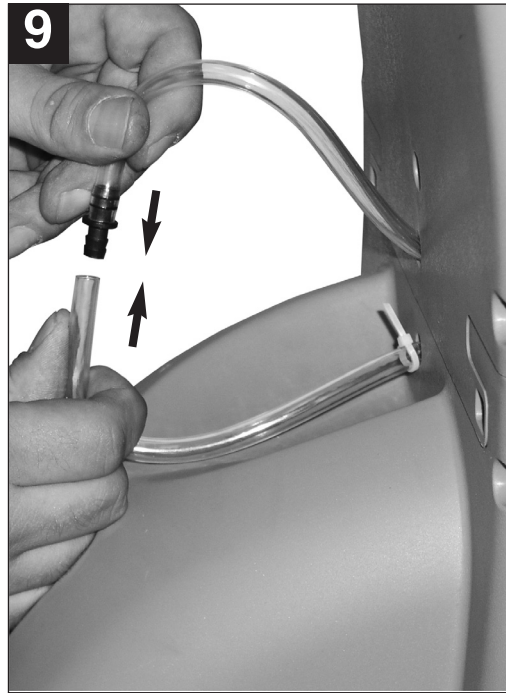
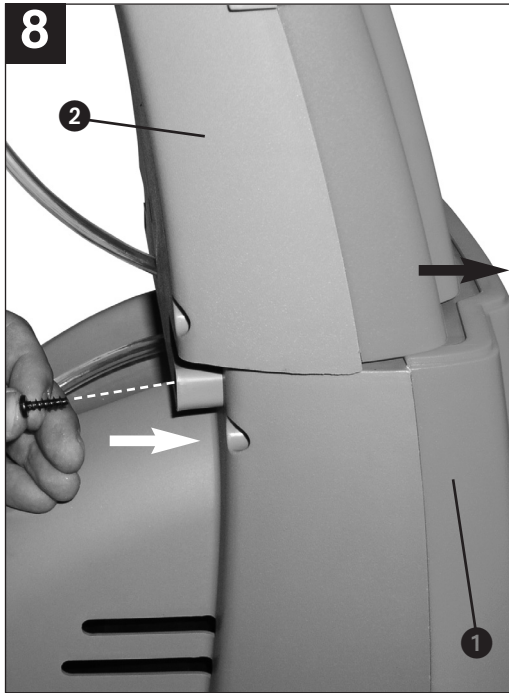
I.-Nr.: 01017

NHR 130



☞ **Assembly** (See Fig. 6 to 11)





Layout (Fig. 1)

- 1 ON/OFF switch
- 2 Connection, high-pressure hose to device
- 3 Connection, water inlet
- 4 High-pressure hose
- 5 Pistol
- 6 Connection, high-pressure hose to pistol
- 7 Lance point / wide cone
- 9 Lance with rotating nozzle
- 8 Accessory mount
- 10 Rotating washing brush
- 11 Pistol mount
- 12 Integrated tank for cleaning agent (2 liter)
- 13 Hose storage

General safety regulations and accident prevention

It is essential that you read the safety regulations and operating instructions in their entirety and follow the information contained therein in order to eliminate the possibility of an accident or potentially dangerous situation from occurring while working with the high-pressure cleaner.

- The electrical connection must be installed by an electrician in accordance with IEC 60364.
- The power plug must be plugged into a properly installed and earthed socket outlet with connected earth-leakage circuit breaker (30 mA).
- Always check the device, the mains cable and the plug before using the high-pressure cleaner. Only operate the device when it is in good working order and has not been damaged in any way. Damaged parts must be immediately replaced by a qualified electrician.
- Always pull the power plug out of the socket outlet before doing any work on the high-pressure cleaner, before changing the nozzle and whenever the cleaner is not being used.
- Only use suitable extension cables when working outdoors. Extension cables must have a minimum cross-section of 1.5 mm². The plug connections must have earthing contacts and be rainwater-protected. Cables over 10 m in length must have a cross section of at least 2.5 mm².
- **Warning!** This device was developed to be used with cleaning agents supplied or recommended by the manufacturer. The use of any other cleaning agents or chemicals can negatively affect the safety of the device.
- **Warning!** Do not use the device when other persons or animals are in the near vicinity unless they are wearing appropriate protective clothing.
- **Warning!** High-pressure jets can be dangerous when the cleaner is not used properly. Do not direct the jet toward persons, animals, live electrical equipment or the device itself.
- Do not direct the jet toward yourself or others in order to clean clothes and footwear.
- Do not allow the high-pressure cleaner to be used by children or unauthorized persons.
- **Warning!** High-pressure hoses, fittings and couplings are important components that help to ensure device safety. Only use high-pressure hoses, fittings and couplings that are recommended by the manufacturer.
- In order to ensure the operational safety of the device, only use genuine manufacturer's replacement parts or parts that have been approved by the manufacturer.
- Do not operate the device if the mains cable or other important parts of the device - e.g. safety-related elements, high-pressure hoses, spray pistol - are damaged.
- **Warning!** Unsuitable extension cables can be dangerous.
- Do not pull or carry the electric tool by its mains cable. Protect the mains cable from becoming damaged by oil, solvents and sharp edges. Do not pull or carry the electric tool by its mains cable.
- Keep your place of work tidy.
- Ensure that the switch is turned off when connecting the unit to the power supply.
- Wear suitable work clothes.
- Check your high-pressure cleaner to ensure that it is in good working order. If the cleaner is not functioning properly, have it checked by an authorized professional. Have all maintenance and inspection work carried out only by a qualified electrician or ISC GmbH.
- The water jet that emerges from the high-pressure nozzle produces a „kickback“ on the spray pistol. Therefore, make sure that you have a solid footing and that you have a firm hold of the pistol grip. In order to protect yourself from possible flying objects (that are released due to the high pressure), wear suitable protection gear.
- Use cleaning agents sparingly. Observe the dosing instructions of the manufacturer.
- The high-pressure jet can damage vehicle tires

GB

and tire parts. Keep a distance of at least 30 cm from the object being cleaned.

- If there is a power failure while you are using the machine, be sure to switch off the machine for safety reasons.
- The electric pump always must be able to draw on a sufficient supply of water. Dry operation causes severe damage to the seals.

Operating Instructions for the High-Pressure Cleaner

Use

The high-pressure cleaner is designed to clean vehicles, machines, buildings, facades, etc. in the private sector.

Please note that our equipment has not been designed for use in commercial, trade or industrial applications. Our warranty will be voided if the machine is used in commercial, trade or industrial businesses or for equivalent purposes.

Items supplied

- High-pressure cleaner
- High-pressure hose
- Spray pistol
- Lance point / wide cone
- Rotating washing brush
- Lance with rotating nozzle

Areas of application

Never use the machine in potentially explosive areas under any circumstances!

The operating temperature must be between +5 and +60 °C.

The machine consists of an assembly with a pump, which is encased in a shock absorbing housing. For an optimal working position the machine comes with a lance and a non-slip pistol grip, whose shape and configuration comply with the applicable regulations.

Do not cover or modify the lance or the spray nozzles in any way.

The high-pressure cleaner is designed to be used with cold or lukewarm water (max. 60 °C); higher temperatures can damage the pump.

Do not use water that is dirty, gritty or contains any chemical products, as these could impair operation and shorten the life of the machine.

The normal lance, the lance with rotating nozzle or the rotating washing brush can be attached prior to using the high-pressure cleaner (cf. Fig. 2).

Assembly (Fig. 1 and Fig. 2)

Connect the high-pressure hose (4) to the connection on the high-pressure cleaner (2) and on the spray pistol (6).

Insert the lance into the spray pistol as shown in Fig. 2 and lock the lance by twisting it.

Connect the water inlet hose (min. Ø 1/2") to the water connection (3) of the high-pressure cleaner.

A backflow stop must be installed between the water tap and the high-pressure cleaner! Ask your local plumber about this.

Connect the mains cable to the socket outlet.

Starting up

Open the water inlet. Press safety pin „a“ (Fig. 3) on the spray pistol and pull back trigger lever „b“ (Fig. 3) in order to bleed the trapped air out of the device.

Turn on the device (Fig. 1, Item 1).

To temporarily turn off, release the trigger lever, at which point the device goes to standby. As soon as you press the trigger lever again, the high-pressure cleaner restarts.

To completely turn off the high-pressure cleaner, press the ON/OFF switch.

The shape of the water jet can be changed from concentrated to flat jet by turning the nozzle (Fig. 4).

Using cleaning agent

Fill the integrated 2 liter detergent tank (Fig. 1, Item 12) with an appropriate cleaning agent. By pulling back the nozzle head on the lance, the device will change to low-pressure operation and the detergent will be added automatically. The washing brush only works with low pressure and with automatic detergent mixing.

Correctly using the device

- The high-pressure cleaner must be set upright on a level, stable surface.
- It is recommended that you maintain the correct operating position every time you use the machine by placing one hand on the pistol and the other on the lance.
- Never direct the water jet toward electrical lines or the machine itself.
- It is normal for the pump to leak a little; this is necessary to avoid damage to the pump when it is at a standstill.

Maintenance

Checking the water intake filter (Fig. 5)

Periodically check the intake filter in order to prevent clogging, which could jeopardize operation of the pump.

To do this, unscrew the connection coupling for the water inlet hose from the device and clean the exposed inlet sieve by placing it under running water.

Long periods of nonuse (electric pump)

If the machine is going to be stored for longer periods of time (i.e. over three months) in a room where frost could develop, it is recommended that the machine be filled with an antifreeze solution (similar to the antifreeze solutions used for vehicles).

When the device is not used for an extended period of time, lime deposits begin to form in the electric pump, which in turn can lead to starting difficulties.

Electric motor

The electric motor is equipped with a motor circuit breaker switch. When the motor starts to run hot, it is cut out by this switch. Switch off the machine. Wait 5 - 10 minutes before using the device again. Try to determine the cause of the fault. If the problem repeats itself, please contact a customer service center.

Technical data

| | |
|--------------------------------------|---------------|
| Rated voltage | 220 V ~ 60 Hz |
| Power rating | 1700 watts |
| Working pressure | 90 bar |
| System pressure (EW bar) | max. 130 bar |
| Output | 360 l/h |
| Suction height | 1 m |
| Max. water inlet pressure | 7 bar |
| L _{pA} sound pressure level | 71,8 dB (A) |
| L _{WA} sound power level | 85,3 dB (A) |
| Weight | 17 kg |

Ordering replacement parts

Please quote the following data when ordering replacement parts:

- Type of machine
- Article number of the machine
- Identification number of the machine
- Replacement part number of the part required

For our latest prices and information please go to www.isc-gmbh.info

GB**TROUBLESHOOTING**

| FAULT | CAUSE | REMEDY |
|--|--|---|
| The electric pump does not run when the switch is pressed. | The plug is damaged. There is insufficient voltage. The pump is locked. The thermal relay has triggered. | Check the plug and fuses to see if they are okay. Manually turn over the motor. Let the motor cool down. |
| The electric pump runs, however no pressure is generated. | The intake filter is clogged. Air is being drawn in at the connectors. The inlet and outlet valves are clogged or worn. The diameter of the nozzle hole is too large. | Clean the filter. Check the intake connection fitting and the hose connectors. Clean or replace. Check and replace. |
| The operating pressure is irregular. | Air is being drawn in. The valves are clogged and worn. The seals are worn. | Check the intake connectors. Clean and replace. Check and replace. |
| The motor suddenly stops. | The thermal relay has triggered due to overheating. | Check the voltage. Turn off the switch and let the motor cool down for a few minutes. |
| The pump drips. | The seals are worn. | Check and replace (professional repair shop). |
| There is a loss of pressure. | The nozzle is worn. The valves are dirty or clogged. The valve seals are worn. The seals are worn. The filter is clogged. | Change the nozzle. Check, clean, exchange. Check and/or exchange. Check and/or exchange. Check and/or clean. |
| There is excess noise. | Air is being drawn in. The valves are worn, dirty or clogged. The bearings are worn. The water temperature is too high. The filter is dirty. | Check the intake lines. Check, clean, exchange. Check and/or exchange. Lower the temperature to below 60 °C. Check and/or exchange. |
| Expelled water is mixed with oil. | The sealing rings (water + oil) are worn. | Check and/or exchange. |
| Water leaks from the pump head. | The seals are worn. The O-ring of the seal set is worn. | Exchange the seal. Exchange the O-ring. |
| When the switch is pressed, the motor hums but does not start. | The mains voltage is lower than that specified. The pump is blocked or frozen. The extension cable is insufficient (cross section too small, cable too long). | Check to see that the extension cable is sufficient. Exchange the extension cable for one that is sufficient. |

DISCARDING THE MACHINE

Carry out the following measures immediately you are no longer going to use the machine:

- Pull out the plug and make the machine inoperable.
- Store the machine in an area that cannot be reached by children.
- Do not use any parts from the used machine as replacement parts.
- Disassemble the machine and discard the individual parts in accordance with the regulations in force in your area

GUARANTEE CERTIFICATE

Dear Customer,

All of our products undergo strict quality checks to ensure that they reach you in perfect condition. In the unlikely event that your device develops a fault, please contact our service department at the address shown on this guarantee card. Of course, if you would prefer to call us then we are also happy to offer our assistance under the service number printed below. Please note the following terms under which guarantee claims can be made:

1. These guarantee terms cover additional guarantee rights and do not affect your statutory warranty rights. We do not charge you for this guarantee.
2. Our guarantee only covers problems caused by material or manufacturing defects, and it is restricted to the rectification of these defects or replacement of the device. Please note that our devices have not been designed for use in commercial, trade or industrial applications. Consequently, the guarantee is invalidated if the equipment is used in commercial, trade or industrial applications or for other equivalent activities. The following are also excluded from our guarantee: compensation for transport damage, damage caused by failure to comply with the installation/assembly instructions or damage caused by unprofessional installation, failure to comply with the operating instructions (e.g. connection to the wrong mains voltage or current type), misuse or inappropriate use (such as overloading of the device or use of non-approved tools or accessories), failure to comply with the maintenance and safety regulations, ingress of foreign bodies into the device (e.g. sand, stones or dust), effects of force or external influences (e.g. damage caused by the device being dropped) and normal wear resulting from proper operation of the device.

The guarantee is rendered null and void if any attempt is made to tamper with the device.

3. The guarantee is valid for a period of 2 years starting from the purchase date of the device. Guarantee claims should be submitted before the end of the guarantee period within two weeks of the defect being noticed. No guarantee claims will be accepted after the end of the guarantee period. The original guarantee period remains applicable to the device even if repairs are carried out or parts are replaced. In such cases, the work performed or parts fitted will not result in an extension of the guarantee period, and no new guarantee will become active for the work performed or parts fitted. This also applies when an on-site service is used.
4. In order to assert your guarantee claim, please send your defective device postage-free to the address shown below. Please enclose either the original or a copy of your sales receipt or another dated proof of purchase. Please keep your sales receipt in a safe place, as it is your proof of purchase. It would help us if you could describe the nature of the problem in as much detail as possible. If the defect is covered by our guarantee then your device will either be repaired immediately and returned to you, or we will send you a new device.

Of course, we are also happy offer a chargeable repair service for any defects which are not covered by the scope of this guarantee or for units which are no longer covered. To take advantage of this service, please send the device to our service address.

DISTRIBUTOR & A/S CENTER in Korea :

Kubo-Tech, Inc.
D Block Room No. 35-310, Guro Machinery & Tools Shopping Center
604-1, Guro-dong, Guro-gu, Seoul 152-050 Korea
Tel : 02-2675-0942/0943 Fax : 02-2675-0944
e-Mail : smakorea@yahoo.co.kr

©

The reprinting or reproduction by any other means, in whole or in part, of documentation and papers accompanying products is permitted only with the express consent of ISC GmbH.

© Technical changes subject to change

EH 03/2007