



GENERAL POWER TOOL SAFETY WARNINGS

WARNING! Read all safety warnings and all instructions. Failure to follow the warnings and instructions may result in electric shock, fire and/or serious injury.

Save all warnings and instructions for future reference. The term "power tool" in the warnings refers to your mains-operated (corded) power tool or battery-operated (cordless) power tool.

1. Work area safety
 - a. **Keep work area clean and well lit.** Cluttered or dark areas invite accidents.
 - b. **Do not operate power tools in explosive atmospheres, such as in the presence of flammable liquids, gases or dust.** Power tools create sparks which may ignite the dust or fumes.
 - c. **Keep children and bystanders away while operating a power tool.** Distractions can cause you to lose control.

2. Electrical safety
 - a. **Power tool plugs must match the outlet. Never modify the plug in any way. Do not use any adapter plugs with earthed (grounded) power tools.** Unmodified plugs and matching outlets will reduce risk of electric shock.
 - b. **Avoid body contact with earthed or grounded surfaces, such as pipes, radiators, ranges and refrigerators.** There is an increased risk of electric shock if your body is earthed or grounded.
 - c. **Do not expose power tools to rain or wet conditions.** Water entering a power tool will increase the risk of electric shock.
 - d. **Do not abuse the cord. Never use the cord for carrying, pulling or unplugging the power tool. Keep cord away from heat, oil, sharp edges or moving parts.** Damaged or entangled cords increase the risk of electric shock.

3. Personal safety
 - a. **When operating a power tool outdoors, use an extension cord suitable for outdoor use.** Use of a cord suitable for outdoor use reduces the risk of electric shock.

4. Stay alert, watch what you are doing and use common sense when operating a power tool. Do not use a power tool while you are tired or under the influence of drugs, alcohol or medication. A moment of inattention while operating power tools may result in serious personal injury.

- b. **Use personal protective equipment. Always wear eye protection.** Protective equipment such as dust mask, non-skid safety shoes, hard hat, or hearing protection used for appropriate conditions will reduce personal injuries.

- c. **Prevent unintentional starting. Ensure the switch is in the off-position before connecting to power source and/or battery pack, picking up or carrying the tool.** Carrying power tools with your finger on the switch or energising power tools that have the switch on invites accidents.

- d. **Remove any adjusting key or wrench before turning the power tool on.** A wrench or a key left attached to a rotating part of the power tool may result in personal injury.

- e. **Do not overreach. Keep proper footing and balance at all times.** This enables better control of the power tool in unexpected situations.
- f. **Dress properly. Do not wear loose clothing or jewellery. Keep your hair, clothing and gloves away from moving parts.** Loose clothes, jewellery or long hair can be caught in moving parts.

- g. **If devices are provided for the connection of dust extraction and collection facilities, ensure these are connected and properly used.** Use of dust collection can reduce dust-related hazards.

- h. **Do not let familiarity gained from frequent use of tools allow you to become complacent and ignore tool safety principles.** A careless action can cause severe injury within a fraction of a second.

4. Power tool use and care
 - a. **Do not force the power tool. Use the correct power tool for your application.** The correct power tool will do the job better and safer at the rate for which it was designed.
 - b. **Do not use the power tool if the switch does not turn it on and off.** Any power tool that cannot be controlled with the switch is dangerous and must be repaired.

- c. **Disconnect the plug from the power source and/or the battery pack from the power tool before making any adjustments, changing accessories, or storing power tools.** Such preventive safety measures reduce the risk of starting the power tool accidentally.

- d. **Store idle power tools out of the reach of children and do not allow persons unfamiliar with the power tool or these instructions to operate the power tool.** Power tools are dangerous in the hands of untrained users.

- e. **Maintain power tools.** Check for misalignment or binding of moving parts, breakage of parts and any other condition that may affect the power tool's operation. If damaged, have the power tool repaired before use. Many accidents are caused by poorly maintained power tools.

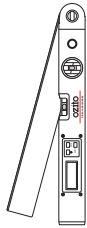
- f. **Keep cutting tools sharp and clean.** Properly maintained cutting tools with sharp cutting edges are less likely to bind and are easier to control.

- g. **Use the power tool, accessories and tool bits etc. in accordance with these instructions, taking into account the working conditions and the work to be performed.** Use of the power tool for operations different from those intended could result in a hazardous situation.

- h. **Keep handles and grasping surfaces dry, clean and free from oil and grease.** Slippery handles and grasping surfaces do not allow for safe handling and control of the tool in unexpected situations.

5. Service
 - a. **Have your power tool serviced by a qualified repair person using only identical replacement parts.** This will ensure that the safety of the power tool is maintained.

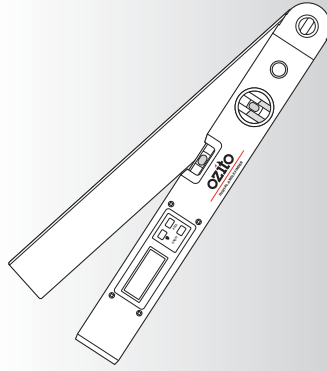
STANDARD EQUIPMENT



Digital Angle Finder



9V Battery



OZITO

DIGITAL

ANGLE FINDER

0 - 230°

INSTRUCTION MANUAL

SPECIFICATIONS

Power: 9V DC Battery
 Measuring Range: 0 - 230°
 Ruler Length: 390mm / 14.5"
 Resolution (Accuracy): 0.1°
 Accuracy: ±0.5°
 Operating Temperature: 0 - 50°C
 Weight: 0.385kg

ozito.com.au

3 YEAR REPLACEMENT WARRANTY

DAL-230

WARRANTY

IN ORDER TO MAKE A CLAIM UNDER THIS WARRANTY YOU MUST RETURN THE PRODUCT TO YOUR NEAREST BUNNINGS WAREHOUSE WITH YOUR BUNNINGS REGISTER RECEIPT. PRIOR TO RETURNING YOUR PRODUCT FOR WARRANTY PLEASE TELEPHONE OUR CUSTOMER SERVICE HELPLINE:

Australia 1800 069 486
New Zealand 0508 069 486

TO ENSURE A SPEEDY RESPONSE PLEASE HAVE THE MODEL NUMBER AND DATE OF PURCHASE AVAILABLE. A CUSTOMER SERVICE REPRESENTATIVE WILL TAKE YOUR CALL AND ANSWER ANY QUESTIONS YOU MAY HAVE RELATING TO THE WARRANTY POLICY OR PROCEDURE.

The benefits provided under this warranty are in addition to other rights and remedies which are available to you at law.

Our goods come with guarantees that cannot be excluded at law. You are entitled to a replacement or refund for a major failure and for compensation for any other reasonably foreseeable loss or damage. You are also entitled to have the goods repaired or replaced if the goods fail to be of acceptable quality and the failure does not amount to a major failure.

Generally you will be responsible for all costs associated with a claim under this warranty, however, where you have suffered any additional direct loss as a result of a defective product you may be able to claim such expenses by contacting our customer service helpline above.

3 YEAR REPLACEMENT WARRANTY

Your product is guaranteed for a period of **36 months from the original date of purchase**. If a product is defective it will be replaced in accordance with the terms of this warranty. Warranty excludes consumable parts, for example: valve adapters and accessories.

WARNING! The following actions will result in the warranty being void.

- If the tool has been operated on a supply voltage other than that specified on the tool.
- If the tool shows signs of damage or defects caused by or resulting from abuse, accidents or alterations.
- Failure to perform maintenance as set out within the instruction manual.
- If the tool is disassembled or tampered with in any way.
- Professional, industrial or high frequency use.

BATTERY & ANGLE FINDER WARNINGS



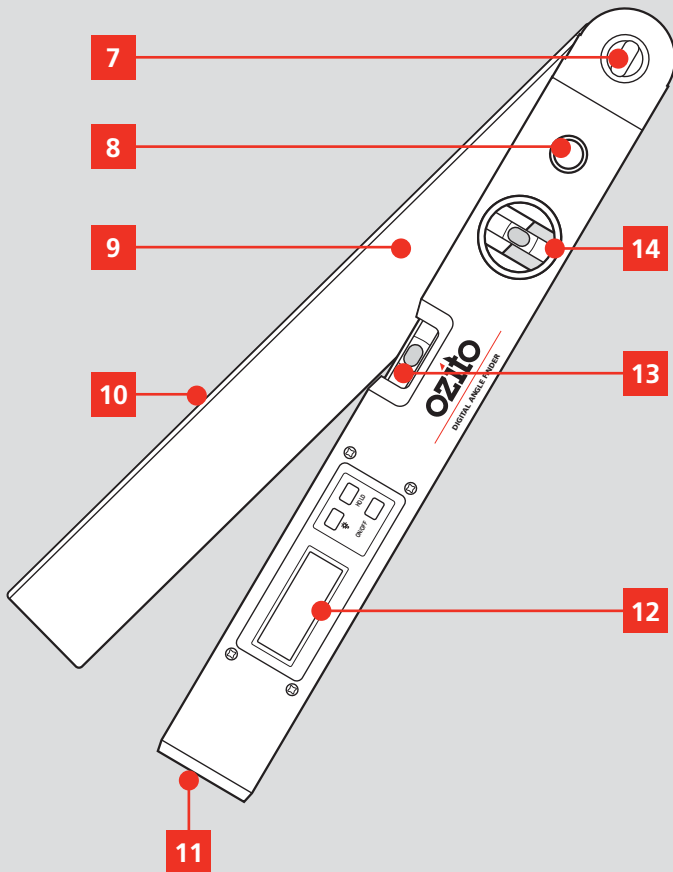
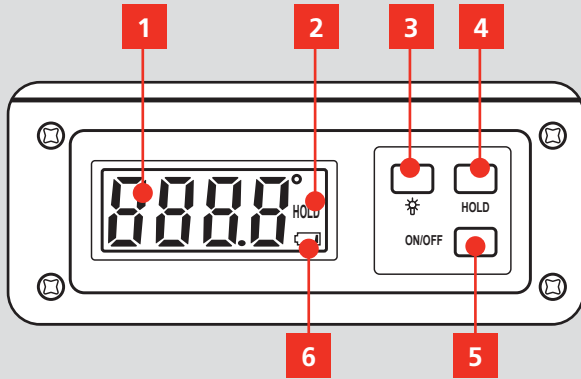
WARNING! The appliance is not to be used by persons (including children) with reduced physical, sensory or mental capabilities, or lack of experience and knowledge, unless they have been given supervision or instruction. Young children should be supervised to ensure that they do not play with the appliance.

1. Do not store or use the tool and battery pack in locations where the temperature may reach or exceed 40°C (such as inside sheds or metal buildings in summer).
2. Do not incinerate the battery pack even if it is seriously damaged or is completely worn out. The battery can explode in a fire.
3. The battery cover may be a choking hazard for children and pets. Keep away from children and animals.
4. Do not break open the battery as it may explode in fire.
5. The included battery is non-rechargeable.

KNOW YOUR PRODUCT

DIGITAL ANGLE FINDER

1. Angle Value
2. 'HOLD' Icon
3. Backlight Button
4. Datahold Button
5. On/Off Button
6. Low Battery Icon
7. Angle Lock
8. Hanging Hole
9. Measuring Arm
10. Ruler Markings
11. Battery Compartment
12. Digital Display
13. Horizontal Spirit Level
14. Vertical Spirit Level



ONLINE MANUAL

Scan this QR Code with your mobile device to take you to the online manual.



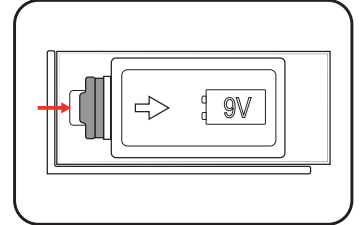
SETUP & PREPARATION

1. BATTERIES

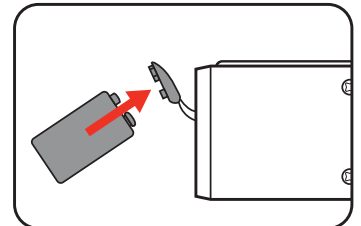
Installing Batteries

The angle meter requires a 9V battery to operate.

1. Press in the tab and lift off the battery compartment lid.

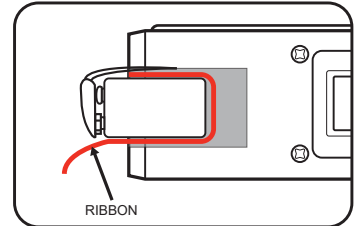


2. Attach the battery terminals to the battery flap and then tuck the battery into the compartment. Ensure the wires are not crimped or bent.



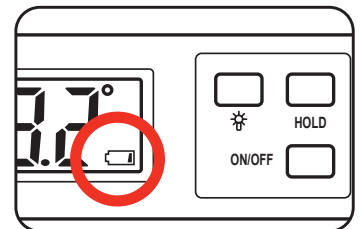
Note: Placing the ribbon under the battery makes it easier to remove when the battery requires replacing.

3. Replace the battery compartment lid.



Low Battery Indicator

When the low battery icon appears, the battery is at low charge and needs to be replaced.



3 YEAR REPLACEMENT WARRANTY

OPERATION

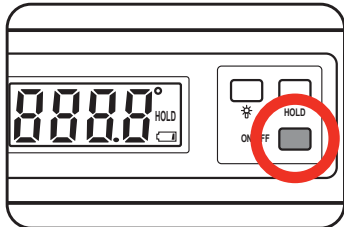
2. CONTROLS

Switching The Unit On & Off

1. Press the on/off button to switch the meter on.

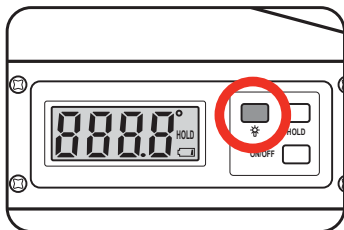
2. Press the on/off button again to switch the unit off.

Note: The unit will automatically switch off after 5 minutes of inactivity.



Backlight

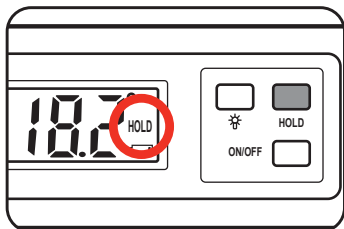
Press the backlight button to toggle the function on or off.



Datahold Function

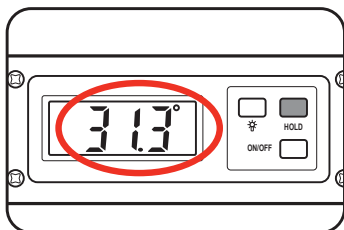
1. Press the hold button to lock the angle measurement on screen. The 'HOLD' icon will appear on the display.

Note: Adjusting the measuring arm with the hold function on will not change the value on screen.



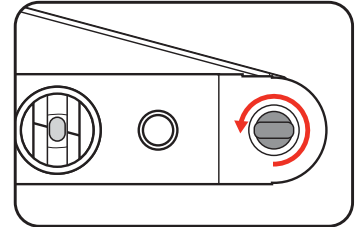
2. Press the hold button again to resume taking measurements.

Note: The 'HOLD' icon will disappear and the value displayed will update according to the position of the measurement arm.

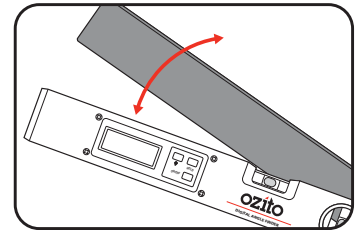


Locking The Measuring Arm

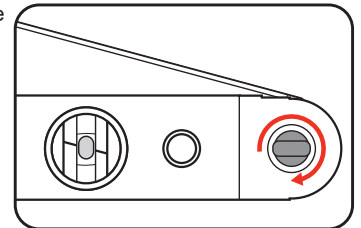
1. Turn the angle knob anti-clockwise to loosen it.



2. Adjust the measuring arm as necessary.



3. Turn the angle knob clockwise to hold the measuring arm in position.

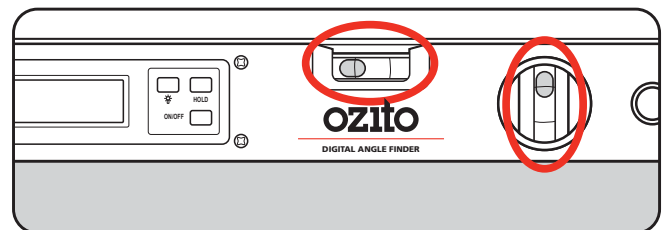


Using The Spirit Levels

The unit can also be used as a level.

1. Place the angle level on the surface.

2. Adjust the surface until the bubbles are directly in the centre of the spirit tubes.



MAINTENANCE



WARNING! BEFORE CLEANING YOUR TOOL OR CARRYING OUT ANY MAINTENANCE PROCEDURE, MAKE SURE THAT THE POWER SUPPLY HAS BEEN REMOVED OR DISCONNECTED TO PREVENT ACCIDENTAL STARTING.

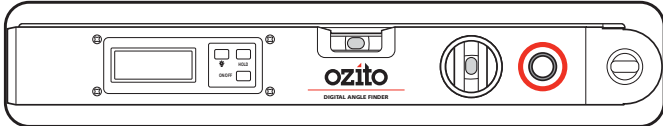
Cleaning

Clean the appliance regularly with a soft cloth. Do not use cleaning agents or solvents; these may be aggressive to the plastic parts in the appliance. Ensure that no water can get into the interior of the appliance.

Storage

Switch off the tool and store it in a dry location which is not accessible to unauthorised persons.

The tool can also be hung up out of the way by the hanging hole.



Remove the battery before storage if the tool will not be in use for a long time.

DESCRIPTION OF SYMBOLS

V	Volts	DC	Direct Current
°	Degrees		Regulatory Compliance Mark (RCM)
	Read Instruction Manual		Warning

CARING FOR THE ENVIRONMENT



Power tools that are no longer usable should not be disposed of with household waste but in an environmentally friendly way. Please recycle where facilities exist. Check with your local council authority for recycling advice.



Recycling packaging reduces the need for landfill and raw materials. Reuse of recycled material decreases pollution in the environment. Please recycle packaging where facilities exist. Check with your local council authority for recycling advice.

SPARE PARTS

Spare parts can be ordered from the Special Orders Desk at your local Bunnings Warehouse.

For further information, or any parts not listed here, visit www.ozito.com.au or contact Ozito Customer Service:

Australia 1800 069 486

New Zealand 0508 069 486

E-mail: enquiries@ozito.com.au