



CORDLESS LINE TRIMMER

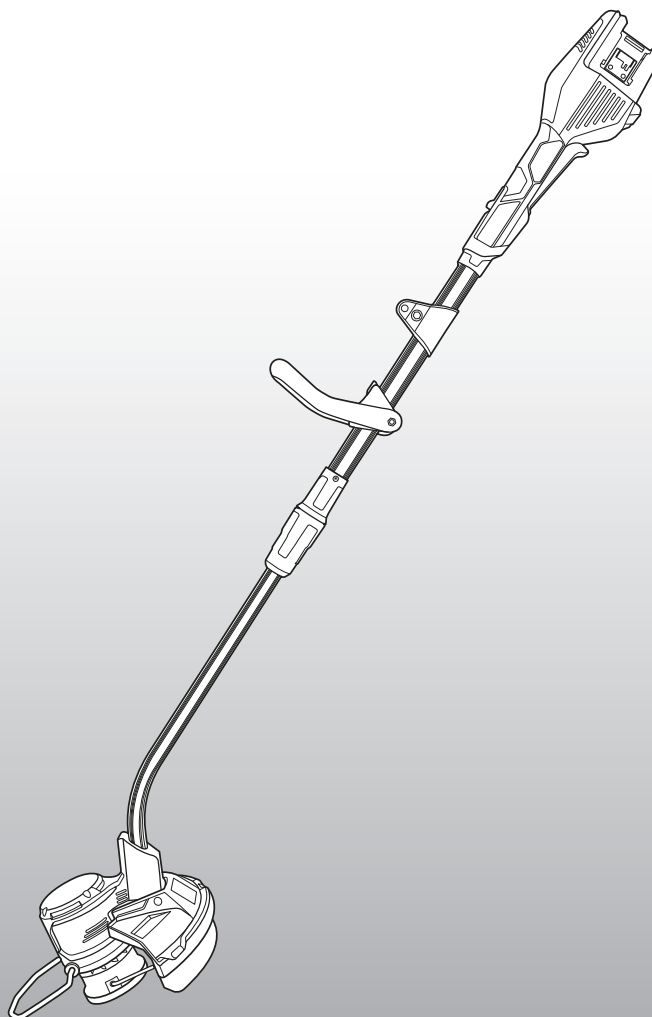
INSTRUCTION MANUAL

SPECIFICATIONS

Input:	18V x 2
Cutting Width:	300mm
Max. Cutting Line:	Ø2.0mm x 8m
No Load Speed:	0 - 9,000/min
Line Feed:	Bump
Tool Weight:	3.1kg

ozito.com.au

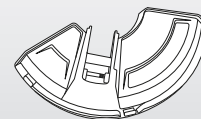
5 YEAR
REPLACEMENT WARRANTY



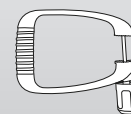
STANDARD EQUIPMENT



Line Trimmer



Safety Guard



Adjustable Handle



Shoulder Strap, Hex Key and Replacement Spool & Line

PXCLTS-0182

WARRANTY

IN ORDER TO MAKE A CLAIM UNDER THIS WARRANTY YOU MUST RETURN THE PRODUCT TO YOUR NEAREST BUNNINGS WAREHOUSE WITH YOUR BUNNINGS REGISTER RECEIPT. PRIOR TO RETURNING YOUR PRODUCT FOR WARRANTY PLEASE TELEPHONE OUR CUSTOMER SERVICE HELPLINE:

Australia 1800 069 486

New Zealand 0508 069 486

TO ENSURE A SPEEDY RESPONSE PLEASE HAVE THE MODEL NUMBER AND DATE OF PURCHASE AVAILABLE. A CUSTOMER SERVICE REPRESENTATIVE WILL TAKE YOUR CALL AND ANSWER ANY QUESTIONS YOU MAY HAVE RELATING TO THE WARRANTY POLICY OR PROCEDURE.

WARNING

The following actions will result in the warranty being void.

- If the tool has been operated on a supply voltage other than that specified on the tool.
- If the tool shows signs of damage or defects caused by or resulting from abuse, accidents or alterations.
- Failure to perform maintenance as set out within the instruction manual.
- If the tool is disassembled or tampered with in any way.
- Professional, industrial or high frequency use.

The benefits provided under this warranty are in addition to other rights and remedies which are available to you at law.

Our goods come with guarantees that cannot be excluded at law. You are entitled to a replacement or refund for a major failure and for compensation for any other reasonably foreseeable loss or damage. You are also entitled to have the goods repaired or replaced if the goods fail to be of acceptable quality and the failure does not amount to a major failure.

Generally you will be responsible for all costs associated with a claim under this warranty, however, where you have suffered any additional direct loss as a result of a defective product you may be able to claim such expenses by contacting our customer service helpline above.

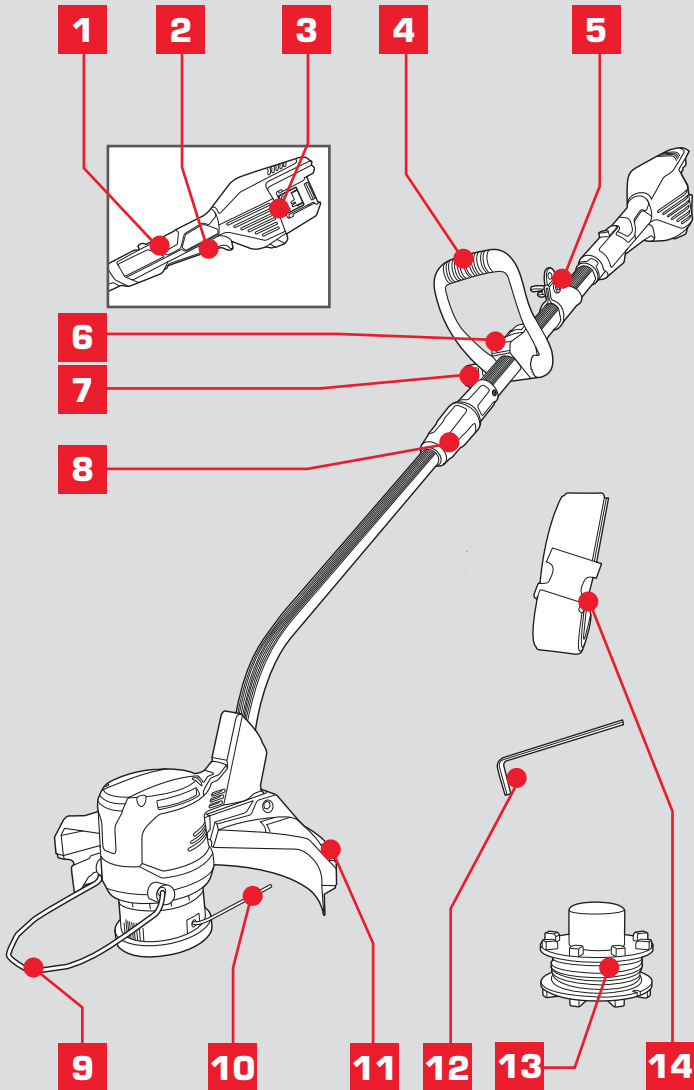
5 YEAR REPLACEMENT WARRANTY

Your Product is guaranteed for a period of 60 months from the original date of purchase and is intended for DIY (Do It Yourself) use only. If a product is defective it will be replaced in accordance with the terms of this warranty. **Lithium Ion batteries and chargers are covered by a 36 month warranty.** Warranty excludes consumable parts, for example: Cutting line, spool cover and included accessories.

KNOW YOUR PRODUCT

CORDLESS LINE TRIMMER

1. Safety Switch
2. Variable Speed Trigger
3. Battery Seating
4. Adjustable Handle
5. Shoulder Strap Bracket
6. Adjustable Handle Lever
7. Adjustable Handle Knob
8. Shaft Lock Collar
9. Edging Guide
10. Cutting Line
11. Safety Guard



ACCESSORIES

12. Hex Key
13. Replacement Spool & Line
14. Shoulder Strap

BATTERY & CHARGER

This tool is compatible with all battery and chargers from the Ozito PXC Range

ONLINE MANUAL

Scan this QR Code with your mobile device to take you to the online manual.



5 YEAR

REPLACEMENT WARRANTY

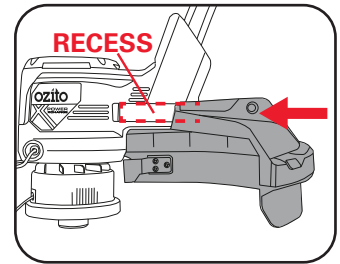
SETUP & PREPARATION

1. ASSEMBLY

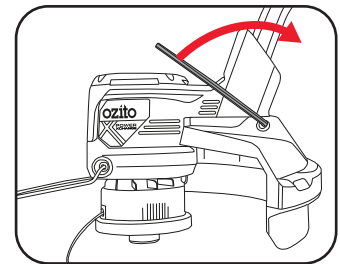
WARNING! ENSURE THE LINE TRIMMER IS SWITCHED OFF AND BATTERIES ARE REMOVED BEFORE PERFORMING ANY OF THE FOLLOWING TASKS.

Fitting the Safety Guard

1. With the provided hex key remove the socket head bolt from the safety guard.
2. Align the tabs of the safety guard with the recess in the back of the line trimmer motor.



3. Slide the safety guard in place and secure with the socket head bolt. Tighten with the hex key.

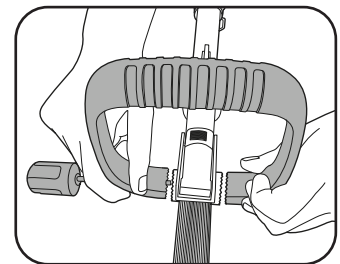


WARNING! NEVER USE THE LINE TRIMMER UNLESS THE SAFETY GUARD IS PROPERLY FITTED.

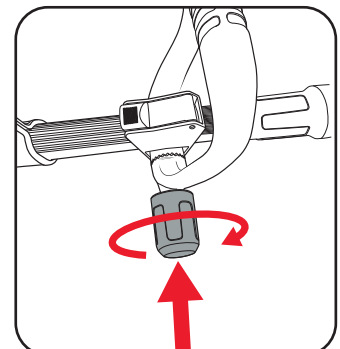
Fitting the Adjustable Handle

1. Fit the adjustable handle onto the mounting bracket.

Note: You will need to carefully flex the adjustable handle just enough to slip over the mounting bracket. Do not over flex as this can damage or break the adjustable handle.



2. Place the adjustable handle on the mounting bracket, then pass the screw with washer through the handle and onto the mounting bracket.

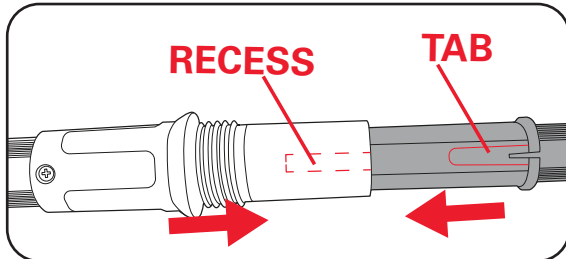


5 YEAR

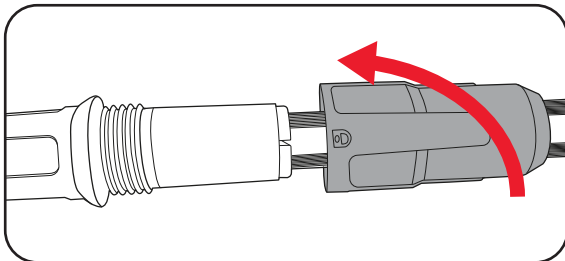
REPLACEMENT WARRANTY

Shaft Assembly

1. Push both halves of the shaft together aligning the tab with the recess.

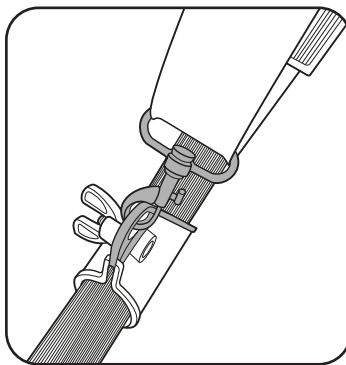


2. Screw tight with the shaft lock collar.



Attaching the Shoulder Strap

Fasten the carabiner hook to the shoulder strap bracket on the shaft.

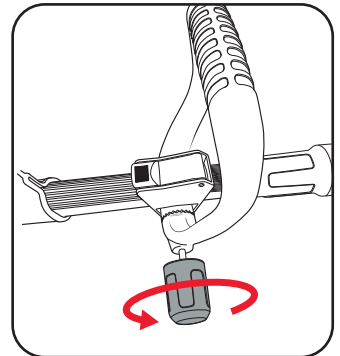


2. ADJUSTMENTS

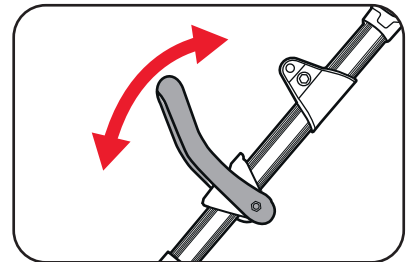
WARNING! ENSURE THE LINE TRIMMER IS SWITCHED OFF AND BATTERIES ARE REMOVED BEFORE PERFORMING ANY OF THE FOLLOWING TASKS.

Adjusting the Handle angle

1. Loosen the adjustable handle knob.

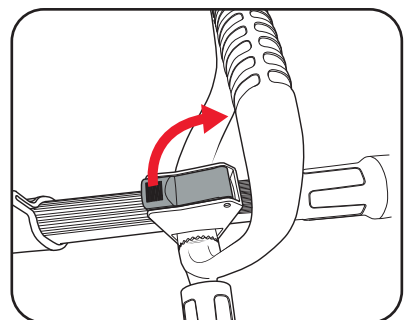


2. Rotate the handle into the desired position and tighten the knob to lock in place.

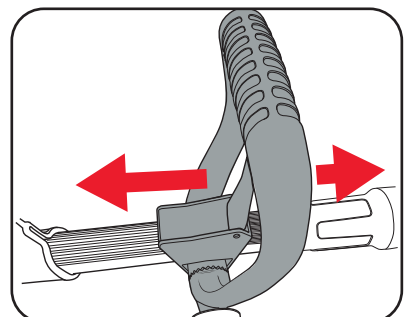


Adjusting the Handle position

1. Release the adjustable handle lever.



2. Slide the handle into the desired position and then lock in place with the lever.



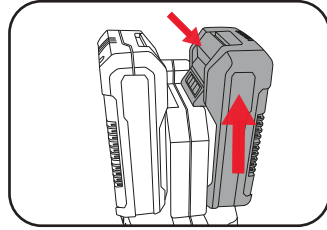
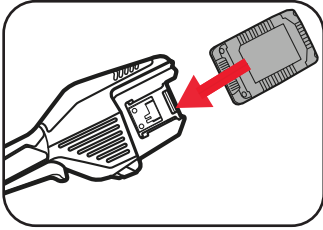
OPERATION

3. CONTROLS & OPERATION

Inserting & Removing the Batteries

Only use 2 batteries with the same capacity (Ah). Always use 2 batteries with the same charge state with the line trimmer.

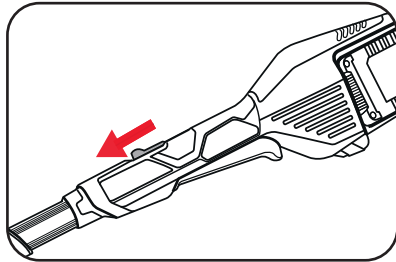
1. Align the ribs of the battery with the recess in housing and slide in until it clicks into place.
2. To remove, press and hold the battery release tab and then slide out.



Switching On and Off

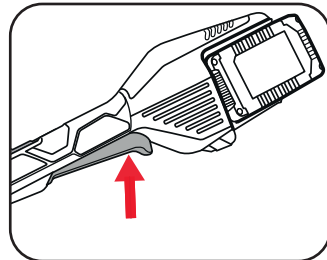
WARNING! BEFORE YOU START THE LINE TRIMMER, MAKE SURE IT IS NOT MAKING CONTACT WITH ANY OBJECTS.

1. Press and hold the safety switch forward with your thumb.

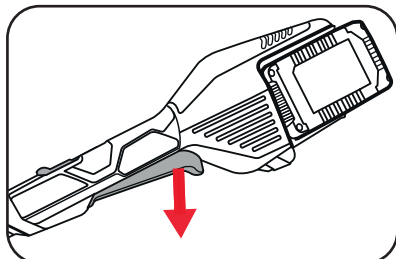


2. Squeeze the variable speed trigger to start the line trimmer.

Note: The more the variable speed trigger is depressed, the faster the cutting line will rotate.



3. To stop the trimmer, release the trigger.



WARNING! DO NOT OPERATE THE LINE TRIMMER IN A TREE, ON A LADDER, OR ON A SCAFFOLD. THIS IS EXTREMELY DANGEROUS.

WARNING! STONES, PIECES OF METAL AND OTHER OBJECTS CAN BE THROWN OUT AT HIGH SPEED BY THE CUTTING LINE.

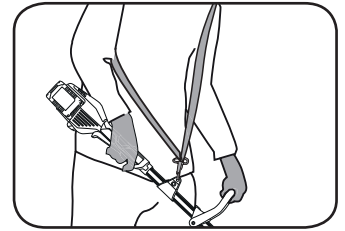
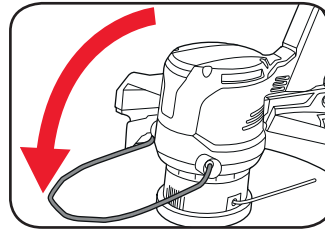
Using the Line Trimmer

WARNING! ALWAYS WEAR APPROPRIATE PERSONAL PROTECTIVE EQUIPMENT (PPE) WHEN USING THE LINE TRIMMER, SUCH AS STURDY, NON-SLIP FOOTWEAR, LONG TROUSERS, SAFETY GLASSES AND HEARING PROTECTION. NEVER USE THE EQUIPMENT BAREFOOT OR IN SANDALS.

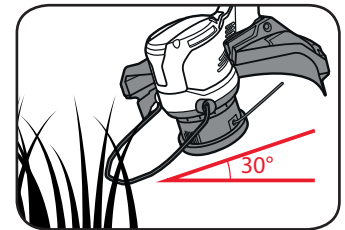
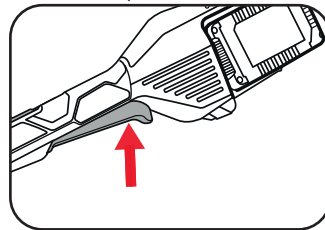
The line trimmer is designed for cutting lawns and grassed areas. The equipment is intended for private use i.e. for use in home and gardening environments. Public facilities, parks, sporting grounds, along roadways, or agriculture and forestry are excluded.

WARNING! INSPECT THE AREA TO BE TRIMMED AND REMOVE ANY WIRE, CORD OR STRING-LIKE OBJECTS WHICH COULD BECOME ENTANGLED IN THE ROTATING SPOOL & LINE.

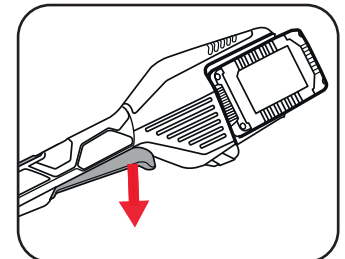
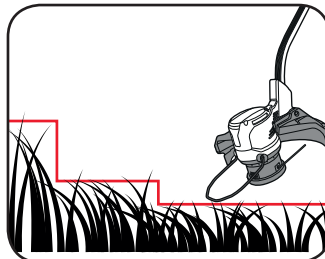
1. Extend the edging guide to prevent the cutting head from getting too close to an object such as a tree trunk or wall.
2. Hold the trimmer with both handles and wear the shoulder strap over the left shoulder for best control and balance..



3. To turn on squeeze the variable speed trigger whilst holding the safety switch forward.
4. Move the line trimmer into the grass to allow it to cut.



5. Several passes will be required to cut long grass.
6. Release the variable speed trigger and allow the motor to come to a complete standstill.

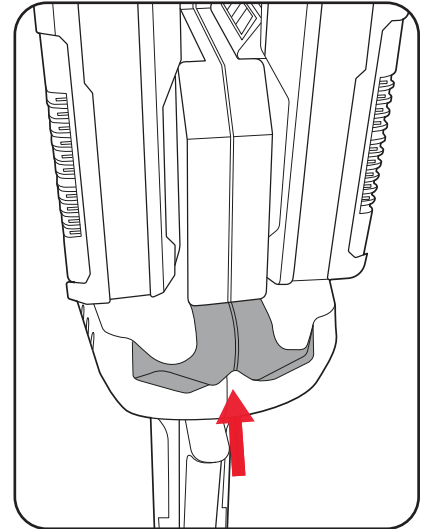


Note: Do not cut grass when wet. The best results are achieved on dry grass.

STORAGE

4. WALL HOLDER

The line trimmer is equipped with an integrated wall holder, this enables it to be easily hung on a wall.



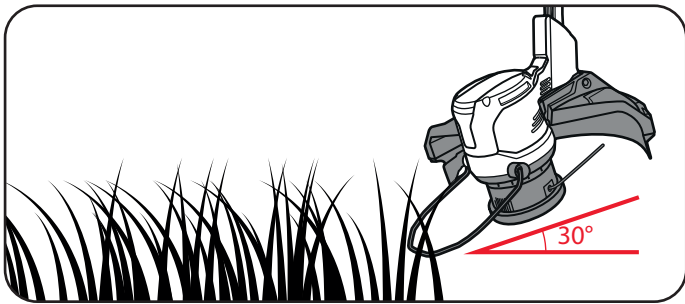
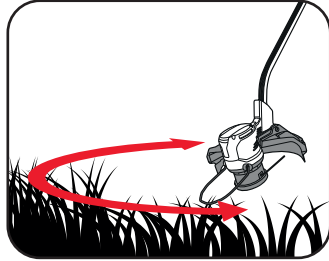
- When not in use, the line trimmer should be stored in a dry, frost free location not within the reach of children.
- Store the equipment and its accessories in a dark and dry place at above freezing temperature. The ideal storage temperature is between 5 and 30°C.
- Remove the batteries from the line trimmer when in storage.
- Allow the motor to cool before you put the equipment in an enclosed area.
- Secure the machine against slipping and tipping over.

WARNING! STORE THE LINE TRIMMER IN A SAFE AND DRY PLACE OUT OF THE REACH OF CHILDREN.

Trimming

WARNING! BYSTANDERS MUST KEEP A MINIMUM SAFE DISTANCE OF 10M AWAY FROM THE LINE TRIMMER WHILE IT IS OPERATING.

Move the line trimmer from side to side as you walk forward, holding it at an angle of approx. 30° (Light cuts are better than heavy cuts as they allow the cut grass to fall away from the cutting head).

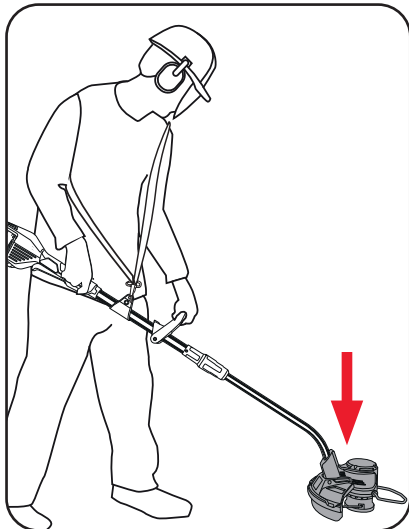


Use only the tip of the cutting line to do the trimming especially near walls and fences. Trimming with the side of the cutting line may overload the motor, wear out the line faster, and break the line more often.

Bump Feed

The line trimmer is fitted with a bump feed function which allows the line to be fed without stopping the line trimmer. If the line trimmer is not cutting correctly the line may need to be fed using this feature.

1. While the line trimmer is still on, simply bump the head of the trimmer on the ground to allow the line to feed out.
2. The bump feed will automatically lock once off the ground so that the line will stop feeding.



WARNING! DO NOT BUMP THE HEAD ON ANY HARD SURFACES SUCH AS CONCRETE OR BRICK, THIS COULD CAUSE DAMAGE TO THE LINE TRIMMER.

MAINTENANCE

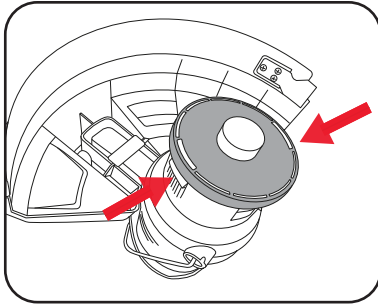


WARNING! ALWAYS ENSURE THE LINE TRIMMER HAS COMPLETELY STOPPED AND THE BATTERIES ARE REMOVED PRIOR TO ANY MAINTENANCE.

Replacing the Spool/Clearing jams and tangled lines

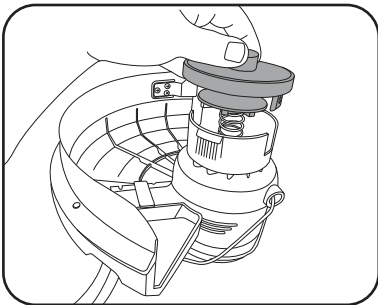
From time to time, especially when cutting thick or stocky weeds, the line feeding hub may become clogged with sap or other material and the line will become jammed as a result. To clear the jam, follow these steps.

1. Turn off the line trimmer and remove the batteries.

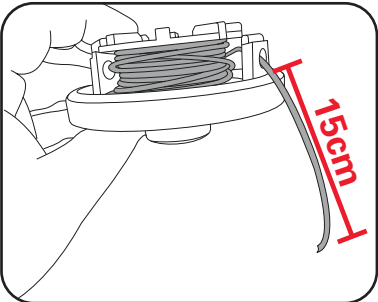


2. Press the release tabs on the line spool cover and remove the cover by pulling it straight off.

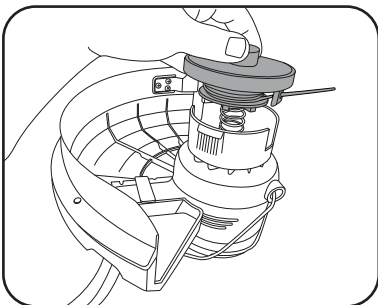
3. Lift the spool of nylon line out of the hub and clear any broken line or cutting debris from the spool area.



4. In case of jams and tangled line, unwrap about 15cm of line to ensure that it is undamaged. If it is OK, thread the end of the line spool through the eyelet in the spool cover



5. Snap the spool cover back onto the spool housing.

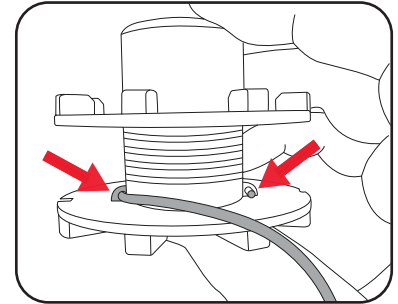


6. Turn the line trimmer back to its normal orientation, insert the battery and turn the tool on. If the length of the line is excessive, you'll hear it being cut automatically to the proper length.

Rewinding Spool from Bulk Line

Replacement Ø2.0mm bulk line for your line trimmer is available from your local dealer. To install, follow steps:

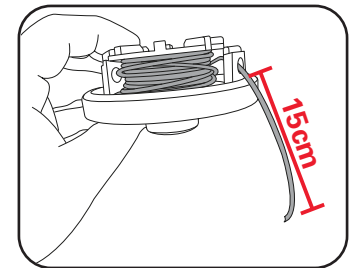
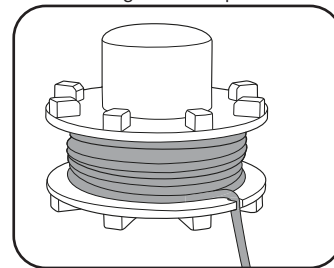
1. Remove the spool as described in steps 1 - 3 of the 'Replacing the spool/clearing jams and tangled lines' section.
2. Cut a length of Ø2.0mm line, approximately 8m long. **Only use Ø2.0mm replacement line, anything larger will cause stress on the motor and will void the warranty.**



3. Insert the new cutting line through the line mount inside the spool.
4. Wind the line evenly with tension in a counter-clockwise direction.

5. To ensure that the line does not unravel while the spool is being loaded, the line can be clipped into one of the notches on the outer edge of the spool.

6. Thread the end of the line through the eyelet in the spool cover.



7. Pull the line sharply to release it from the notch.

8. Re-seat the spool as described in steps 5 - 6 of the 'Replacing the spool/clearing jams and tangled lines' section.

Cleaning

- Keep the ventilation slots of the machine clean at all times to ensure efficient operation.
- After each use, blow it with compressed air at low pressure through the machine housing to ensure it is free from all dust, dirt, etc. Build up of dust or dirt particles may cause the machine to overheat and shorten the life of the machine.
- If the housing of the machine requires cleaning, do not use solvents. Use of a soft cloth and brush only is recommended.
- Never allow any liquid to get inside the machine, never immerse any part of the machine into liquid or clean the machine with running water, particularly with high-pressure water.

Maintenance

- No lubrication is necessary as the tool has sealed bearings.
- Take care that all fastening elements (screws, nuts, etc.) are firmly tightened, so that you can work safely with the line trimmer.
- Replace worn or damaged parts for safety.

Transport

- Switch the machine off and remove the batteries before transporting it.
- Always carry the tool with both handles. Do not carry the line trimmer by the motor housing.
- Secure the machine against slipping if transporting in vehicles.

Note: Ozito Ltd will not be responsible for any damage or injuries caused by the repair of the line trimmer by an unauthorised person or by mishandling of the line trimmer. This tool is designed for DIY use - use in commercial or industrial environments will void the warranty.

Battery protection system

The tool is equipped with the battery protection system, which helps to ensure a long service life.

The output power automatically cuts off during operation when the tool and/or battery are placed under the following situations:

- **When the tool is overloaded:**

If this occurs, release the trigger switch and remove causes of overload, then pull the switch trigger again to restart.

- **When the remaining battery capacity becomes low:**

Recharge the battery pack.

Note: The battery protection system does not in any way damage the tool.

Note: The indicated capacity may be lower than the actual level during use or immediately after using the tool.

TROUBLESHOOTING

Problem	Cause	Remedy
Trimmer is not starting.	Possible clogging.	Clean the cutter head of any grass.
	Battery is low in charge.	Charge battery.
	Battery not inserted properly.	Insert battery pack correctly.
Trimmer is not operating at full capacity.	Possible clogging.	Clean the cutter head of any grass.
	Cutting tall grass at ground level.	Make several passes from top down.
Motor stops while operating.	Battery has no power.	Charge battery.
Grass wraps around the shaft and trimmer head.	Cutting tall grass at ground level.	Make several passes from top down.

Run Time

The operating time of the PXC battery (the area that can be covered with a single battery charge) is largely dependent on the state of the grass (e.g. Density, moisture, height, etc.) and the line trimmer speed (walking speed).

Frequently turning the equipment on and off while line trimming will also reduce the runtime and area that you can cover. If the operating time of the PXC battery (runtime and area coverage) is still unsatisfactory in spite of the above measures, you can remedy the problem by using PXC battery with a larger capacity (Ah).

SPARE PARTS

Spare parts can be ordered from the Special Orders Desk at your local Bunnings Warehouse.

For further information, visit www.ozito.com.au or contact Ozito Customer Service:

Australia 1800 069 486

New Zealand 0508 069 486

E-mail: hello@ozito.com.au

CARING FOR THE ENVIRONMENT



Machines that are no longer usable should not be disposed of with household waste but in an environmentally friendly way. Please recycle where facilities exist. Check with your local council authority for recycling advice.



Recycling packaging reduces the need for landfill and raw materials. Reuse of recycled material decreases pollution in the environment. Please recycle packaging where facilities exist. Check with your local council authority for recycling advice.

DESCRIPTION OF SYMBOLS

V	Volts	Hz	Hertz
a.c./~	Alternating Current	W	Watts
d.c./---	Direct current	∅	Diameter
mA	Milliamperes	n₀	No load speed
/min	Revolutions or reciprocations per minute	Ah	Amp hour
	Regulatory Compliance Mark (RCM)	mm	Millimetre
	Wear hearing and eye protection.		Warning
	Keep bystanders away. Do not operate whilst people especially children or pets are in the area.		
	Read Instruction Manual to reduce the risk of injury.		
	Keep bystanders away. Do not operate whilst people especially children or pets are in the area.		
	Sound power level: 96 dB		Beware of flying objects and debris.
			Do not operate in the rain or leave the line trimmer outdoors while raining.



ELECTRICAL SAFETY



WARNING! When using mains-powered tool & machines, basic safety precautions, including the following, should always be followed to reduce risk of fire, electric shock, personal injury and material damage.

Read the whole manual carefully and make sure you know how to switch the tool or machine off in an emergency, before operating the tool or machine.

Save these instructions and other documents supplied with this tool or machine for future reference.

• This appliance is not intended for use by persons (including children) with reduced physical, sensory or mental capabilities, or lack of experience and knowledge, unless they have been given supervision or instruction concerning use of the appliance by a person responsible for their safety. Children should be supervised to ensure that they do not play with the appliance.

• This appliance is compatible and only to be used with all batteries & chargers from the Ozito PXC range. Refer to the PXC battery and charger manuals for information regarding charging, use and storage.

-Remove the batteries from the appliance before being charged.

-when the appliance is left unattended,

-when the appliance is being checked, cleaned, or having maintenance work done,

-Do not combine different types of batteries or new and used batteries.

-If the appliance is to be stored unused for a long period, the batteries should be removed.

-Do not use modified or damaged batteries.



GENERAL MACHINE SAFETY WARNINGS



WARNING! Read all safety warnings, instructions, illustrations and specifications provided with this machine. Failure to follow all instructions listed below may result in electric shock, fire and/or serious injury.

Save all warnings and instructions for future reference.

The term "machine" in the warnings refers to your mains-operated (corded) machine or battery-operated (cordless) machine.

1) Work area safety

- a) **Keep work area clean and well lit.** Cluttered or dark areas invite accidents.
- b) **Do not operate machines in explosive atmospheres, such as in the presence of flammable liquids, gases or dust.** Machines create sparks which may ignite the dust or fumes.
- c) **Keep children and bystanders away while operating a machine.** Distractions can cause you to lose control.

2) Electrical safety

- a) **Machine plugs must match the outlet. Never modify the plug in any way. Do not use any adapter plugs with earthed (grounded) machines.** Unmodified plugs and matching outlets will reduce risk of electric shock.
- b) **Avoid body contact with earthed or grounded surfaces, such as pipes, radiators, ranges and refrigerators.** There is an increased risk of electric shock if your body is earthed or grounded.
- c) **Do not expose machines to rain or wet conditions.** Water entering a machine will increase the risk of electric shock.
- d) **Do not abuse the cord. Never use the cord for carrying, pulling or unplugging the machine. Keep cord away from heat, oil, sharp edges or moving parts.** Damaged or entangled cords increase the risk of electric shock.
- e) **When operating a machine outdoors, use an extension cord suitable for outdoor use.** Use of a cord suitable for outdoor use reduces the risk of electric shock.
- f) **If operating a machine in a damp location is unavoidable, use a residual current device (RCD) protected supply.** Use of an RCD reduces the risk of electric shock.

3) Personal safety

- a) **Stay alert, watch what you are doing and use common sense when operating a machine. Do not use a machine while you are tired or under the influence of drugs, alcohol or medication.** A moment of inattention while operating machines may result in serious personal injury.
- b) **Use personal protective equipment. Always wear eye protection.** Protective equipment such as a dust mask, non-skid safety shoes, hard hat or hearing protection used for appropriate conditions will reduce personal injuries.
- c) **Prevent unintentional starting. Ensure the switch is in the off-position before connecting to power source and/or battery pack, picking up or carrying the machine.** Carrying machines with your finger on the switch or energising machines that have the switch on invites accidents.
- d) **Remove any adjusting key or wrench before turning the machine on.** A wrench or a key left attached to a rotating part of the machine may result in personal injury.
- e) **Do not overreach. Keep proper footing and balance at all times.** This enables better control of the machine in unexpected situations.
- f) **Dress properly. Do not wear loose clothing or jewellery. Keep your hair and clothing away from moving parts.** Loose clothes, jewellery or long hair can be caught in moving parts.
- g) **If devices are provided for the connection of dust extraction and collection facilities, ensure these are connected and properly used.** Use of dust collection can reduce dust-related hazards.
- h) **Do not let familiarity gained from frequent use of machines allow you to become complacent and ignore machine safety principles.** A careless action can cause severe injury within a fraction of a second.
- i) **Avoid using power tools and machines for long periods of time without breaks.** Vibration from tool and machines can be transmitted into your hands and arms.

4) Machine use and care

- a) **Do not force the machine. Use the correct machine for your application.** The correct machine will do the job better and safer at the rate for which it was designed.
- b) **Do not use the machine if the switch does not turn it on and off.** Any machine that cannot be controlled with the switch is dangerous and must be repaired.
- c) **Disconnect the plug from the power source and/or remove the battery pack, if detachable, from the machine before making any adjustments, changing accessories, or storing machines.** Such preventive safety measures reduce the risk of starting the machine accidentally.
- d) **Store idle machines out of the reach of children and do not allow persons unfamiliar with the machine or these instructions to operate the machine.** Machines are dangerous in the hands of untrained users.
- e) **Maintain machines and accessories. Check for misalignment or binding of moving parts, breakage of parts and any other condition that may affect the machine's operation. If damaged, have the machine repaired before use.** Many accidents are caused by poorly maintained machines.
- f) **Keep cutting machines sharp and clean.** Properly maintained cutting machines with sharp cutting edges are less likely to bind and are easier to control.
- g) **Use the machine, accessories and machine bits etc. in accordance with these instructions, taking into account the working conditions and the work to be performed.** Use of the machine for operations different from those intended could result in a hazardous situation.
- h) **Keep handles and grasping surfaces dry, clean and free from oil and grease.** Slippery handles and grasping surfaces do not allow for safe handling and control of the machine in unexpected situations.

5) Battery machine use and care

- a) **Recharge only with the charger specified by the manufacturer.** A charger that is suitable for one type of battery pack may create a risk of fire when used with another battery pack.
- b) **Use machines only with specifically designated battery packs.** Use of any other battery packs may create a risk of injury and fire.
- c) **When battery pack is not in use, keep it away from other metal objects, like paper clips, coins, keys, nails, screws or other small metal objects, that can make a connection from one terminal to another.** Shorting the battery terminals together may cause burns or a fire.
- d) **Under abusive conditions, liquid may be ejected from the battery; avoid contact. If contact accidentally occurs, flush with water. If liquid contacts eyes, additionally seek medical help.** Liquid ejected from the battery may cause irritation or burns.
- e) **Do not use a battery pack or machine that is damaged or modified.** Damaged or modified batteries may exhibit unpredictable behaviour resulting in fire, explosion or risk of injury.
- f) **Do not expose a battery pack or machine to fire or excessive temperature.** Exposure to fire or temperature above 130°C may cause explosion.
- g) **Follow all charging instructions and do not charge the battery pack or machine outside the temperature range specified in the instructions.** Charging improperly or at temperatures outside the specified range may damage the battery and increase the risk of fire.

6) Service

- a) **Have your machine serviced by a qualified repair person using only identical replacement parts.** This will ensure that the safety of the machine is maintained.
- b) **Never service damaged battery packs.** Service of battery packs should only be performed by the manufacturer or authorized service providers.



LINE TRIMMER SAFETY WARNINGS



WARNING! This appliance is not intended for use by young or infirm persons unless supervised by a responsible person to ensure that they can use the appliance safely. Children should be supervised to ensure that they do not play with the appliance.

Hold machine by insulated gripping surfaces, when performing an operation where the cutting accessory may contact hidden wiring. Cutting accessory contacting a "live" wire may make exposed metal parts of the machine "live" and could give the operator an electric shock.

This appliance is not intended for use by persons (including children) with reduced physical, sensory or mental capabilities, or lack of experience and knowledge, unless they have been given supervision or instruction concerning use of the appliance by a person responsible for their safety.

- Never allow children or people unfamiliar with these instructions to use the line trimmer.
- Avoid using the line trimmer, while people, especially children or pets, are nearby.
- Use the line trimmer only in daylight or good artificial light.
- Never operate the line trimmer with damaged guards or without guards in place.
- Switch on the line trimmer only when the hands and feet are away from the cutting head.
- Never fit metal cutting blades or line.
- Use only the manufacturer's recommended replacement parts and accessories.
- Always remove the batteries from the line trimmer when leaving the line trimmer unattended.
- Always remove the batteries from the line trimmer before carrying out maintenance or cleaning work.
- Inspect and maintain the line trimmer regularly. Have the line trimmer repaired only by an authorized repairer.
- When not in use, store the line trimmer out of the reach of children.
- Face the cutting head away from yourself, other people and animals while the batteries are connected to the line trimmer (especially during operation).
- Remove the batteries when changing spools or clearing grass from under the safety guard.
- Remove the batteries from the line trimmer before making any adjustments.
- Only use Ø2.0mm replacement line, anything larger will cause damage to the line trimmer.

- Use both handles at all times.
- Keep ventilation openings clear of debris. Keep handles dry, clean and free of oil and grease.
- Never reach underneath the line trimmer (the cutting line area) until it has completely stopped and the batteries has been removed.
- Maintain a safe distance of at least 15m from other people when using the tool.
- Always wear adequate protective clothing when operating the blower to avoid injuries to face, eyes, hands, feet, head or hearing. Use safety glasses or a face shield, high boots or sturdy shoes, long trousers, work gloves, a hard hat and ear defenders.
- Do not get distracted and always concentrate on what you are doing. Use common sense. Never operate the tool when you are tired, sick or under the influence of alcohol or other drugs.
- Avoid using power tools and machines for long periods of time without breaks. Vibration from tools and machines can be transmitted into your hands and arms.
- Do not operate this appliance with long loose hair or loose fitting jewellery. Tie long loose hair back and remove loose fitting jewellery.



WARNING! When servicing, use only identical replacement parts. Use of any other parts may create a hazard or cause product damage. To ensure safety and reliability, all repairs should be performed by a qualified service technician.



DANGER! Always remove the batteries from the line trimmer:

- when the equipment is left unattended,
- when the equipment is being checked, cleaned, or having maintenance work done,
- after striking a foreign object. Inspect the appliance for damage and make repairs as necessary.
- or if the equipment vibrates abnormally.