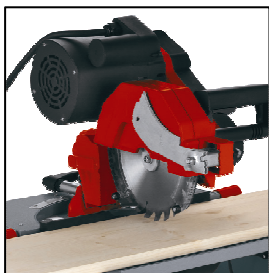
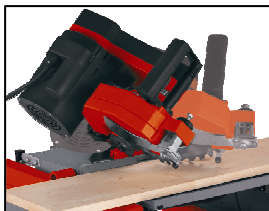
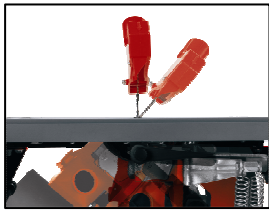
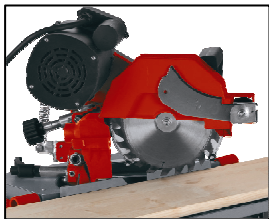
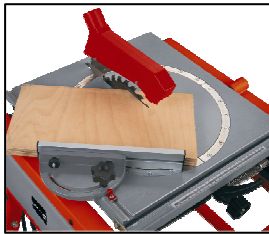


**RED**

RT-FF 1220 U

Bench, Crosscut and Mitre Saw

This compact bench, crosscut and mitre saw is an extremely practical multi-functional machine. It can be used as both a fully fledged cross-cut saw and a bench circular saw and can be converted from one to the other with just a few moves.



**Electromechanical
Exhaust Brake**

Features

- On-/Off switch with emergency stop and electromechanical exhaust brake
- Height adjustable stand
- Excellent sawing capacity due to high speed and carbide-tipped saw blade
- Cross stop can be swiveled from -30° to $+30^{\circ}$
- Parallel stop with 2 stop heights
- Complete with folding base frame
- Connection for dust extractor \varnothing 36 mm

Crosscut / mitre saw mode

- Turntable can be turned from -45° to $+45^{\circ}$
- Can be used for double miter cuts
- Saw head can be tilted continuously from 0° to 45°

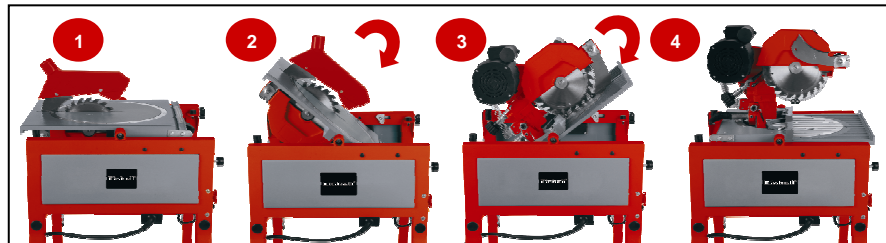
Bench circular saw mode

- Saw blade can be swiveled from 0° to 45°
- Cutting height adjustable from 0 to 45 mm



RED RT-FF 1220 U

Bench, Crosscut and Mitre Saw



As special accessory available:
TCT-saw blade 205 x 30 x 2.5 mm; 24 teeth

Art.-No.:
45.021.56

Logistic Information

| | |
|--------------------|---------------------|
| Typ: | RT-FF 1220 U |
| Art.-No.: | 43.072.02 |
| Ident-No.: | 01017 |
| Bar code: | 4006825 540093 |
| Packaging: | 622 x 566 x 440 mm |
| Sales unit: | 1 pc |
| 20'': | 180 pcs |
| 40'': | 380 pcs |
| 40'' HC: | 451 pcs |
| Weight: | 40 kgs (gross) |

Technical Data

| | |
|---|------------------------------|
| ■ Mains: | 230 V ~ 50 Hz |
| ■ Power: | 1,200 W S6 40% |
| ■ Idle speed: | 3,200 min ⁻¹ |
| ■ Saw blade: | Ø 205 x Ø 30 x 2.5 mm |
| ■ Max. cutting depth bench circular saw: | 45 mm at 90°/ 30 mm at 45° |
| ■ Max. cutting depth crosscut / mitre saw: | 55 mm at 90°/ 42 mm at 45° |
| ■ Max. cutting width crosscut / mitre saw: | 180 mm at 90°/ 125 mm at 45° |