



18V CORDLESS

BACKPACK GARDEN SPRAYER

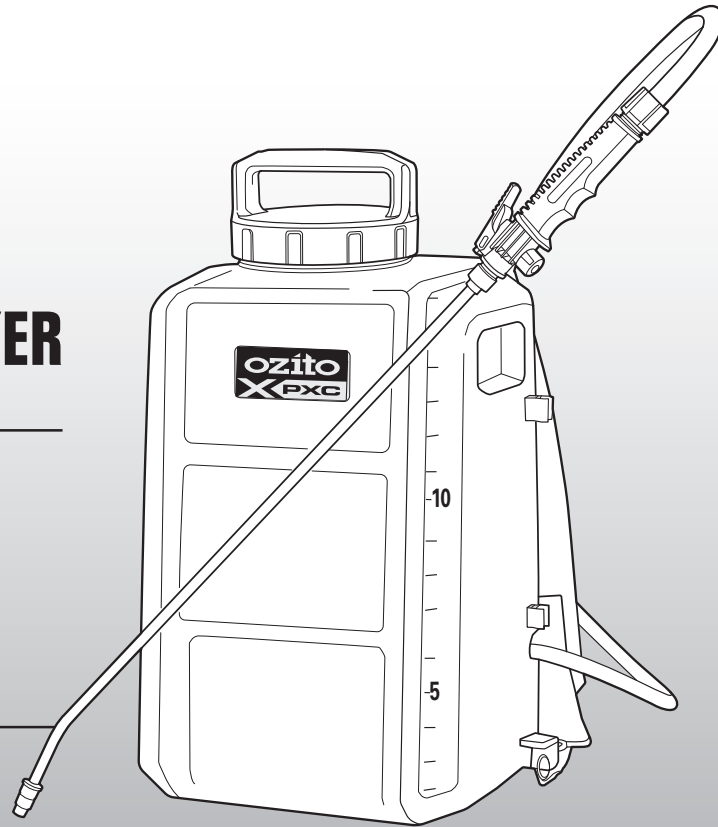
INSTRUCTION MANUAL

SPECIFICATIONS

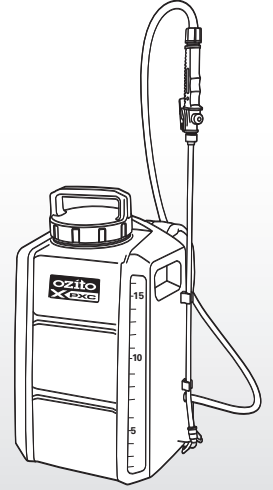
Input:	18V
Tank Volume Max.:	15 litres
Delivery Pressure Max.:	4.5 bar (65 psi)
Flow Rate:	54 - 102 L/h
Nozzle:	Ø1.7mm
Optimal Spray Distance:	0.5m
Liquid Temperature Max.:	40°C
Weight:	4.7kg

ozito.com.au

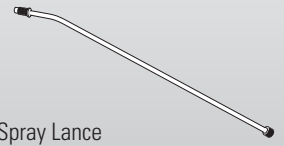
5 YEAR
REPLACEMENT WARRANTY



STANDARD EQUIPMENT



Backpack Sprayer



Spray Lance

PXBGSS-1815

WARRANTY

IN ORDER TO MAKE A CLAIM UNDER THIS WARRANTY YOU MUST RETURN THE PRODUCT TO YOUR NEAREST BUNNINGS WAREHOUSE WITH YOUR BUNNINGS REGISTER RECEIPT. PRIOR TO RETURNING YOUR PRODUCT FOR WARRANTY PLEASE TELEPHONE OUR CUSTOMER SERVICE HELPLINE:

Australia 1800 069 486

New Zealand 0508 069 486

TO ENSURE A SPEEDY RESPONSE PLEASE HAVE THE MODEL NUMBER AND DATE OF PURCHASE AVAILABLE. A CUSTOMER SERVICE REPRESENTATIVE WILL TAKE YOUR CALL AND ANSWER ANY QUESTIONS YOU MAY HAVE RELATING TO THE WARRANTY POLICY OR PROCEDURE.

WARNING

The following actions will result in the warranty being void.

- If the tool has been operated on a supply voltage other than that specified on the tool.
- If the tool shows signs of damage or defects caused by or resulting from abuse, accidents or alterations.
- Failure to perform maintenance as set out within the instruction manual.
- If the tool is disassembled or tampered with in any way.
- Professional, industrial or high frequency use.

The benefits provided under this warranty are in addition to other rights and remedies which are available to you at law.

Our goods come with guarantees that cannot be excluded at law. You are entitled to a replacement or refund for a major failure and for compensation for any other reasonably foreseeable loss or damage. You are also entitled to have the goods repaired or replaced if the goods fail to be of acceptable quality and the failure does not amount to a major failure.

Generally you will be responsible for all costs associated with a claim under this warranty, however, where you have suffered any additional direct loss as a result of a defective product you may be able to claim such expenses by contacting our customer service helpline above.

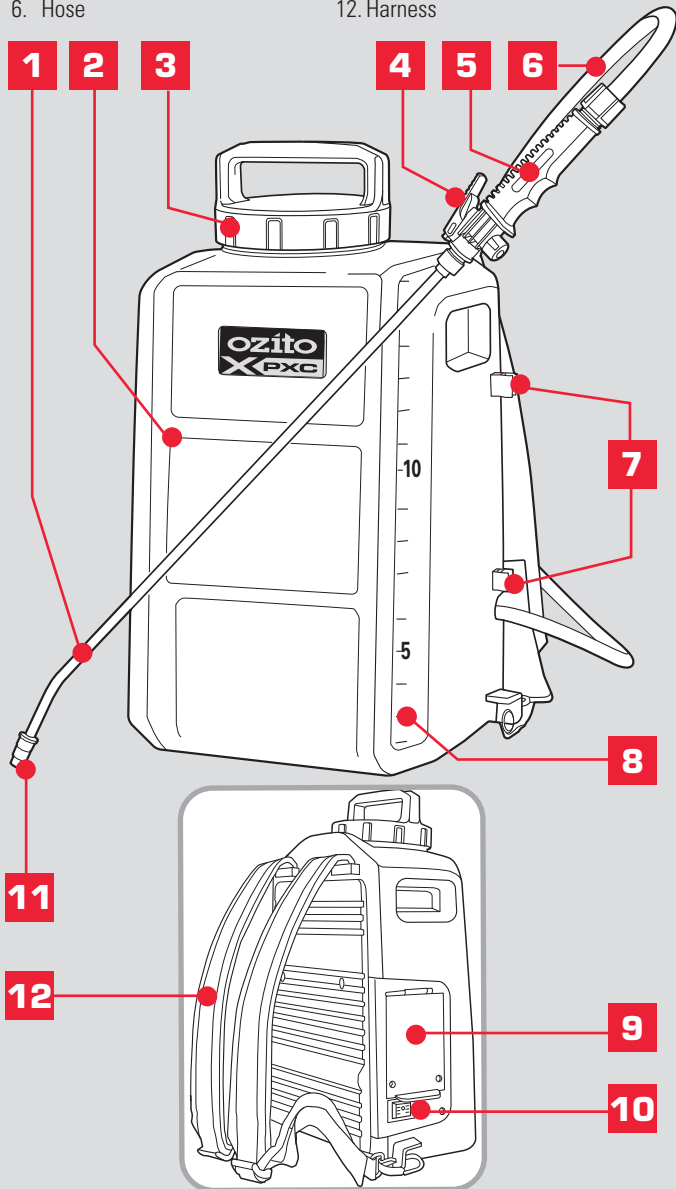
5 YEAR REPLACEMENT WARRANTY

Your Product is guaranteed for a period of 60 months from the original date of purchase and is intended for DIY (Do It Yourself) use only. If a product is defective it will be replaced in accordance with the terms of this warranty. **Lithium Ion batteries and chargers are covered by a 36 month warranty** Warranty excludes consumable parts, for example: Bearings, Harness, O-rings and Seals.

KNOW YOUR PRODUCT

CORDLESS BACKPACK SPRAYER

- | | |
|----------------------------|-----------------------|
| 1. Spray Lance | 7. Wand Storage Clips |
| 2. Tank | 8. Scale |
| 3. Tank Lid | 9. Battery Cover |
| 4. On Demand Spray Trigger | 10. On/Off Switch |
| 5. Spray Wand Handle | 11. Adjustable Nozzle |
| 6. Hose | 12. Harness |



BATTERY & CHARGER

This tool is compatible with all battery and chargers from the Ozito PXC Range.

ONLINE MANUAL

Scan this QR Code with your mobile device to take you to the online manual.



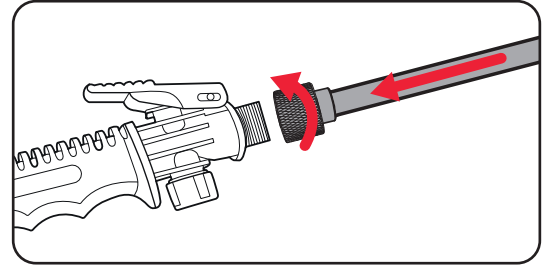
SETUP & PREPARATION

1. ASSEMBLY

Fitting the Spray Lance

WARNING! ENSURE THE BACKPACK SPRAYER IS SWITCHED OFF AND THE BATTERY IS DISCONNECTED BEFORE PERFORMING ANY OF THE FOLLOWING TASKS.

1. Attach the spray lance together with the spray wand handle.

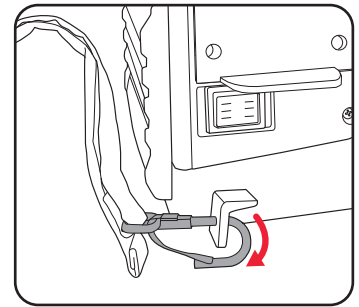
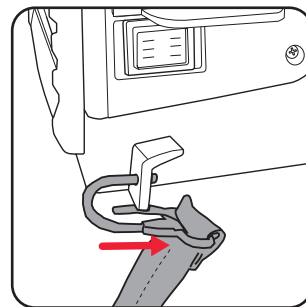


Note: Check the hose, spray wand handle and spray lance are all connected securely. Check for any leaks, if any leaks are found, stop using the sprayer and fix the leak before continuing use.

Fitting the Harness

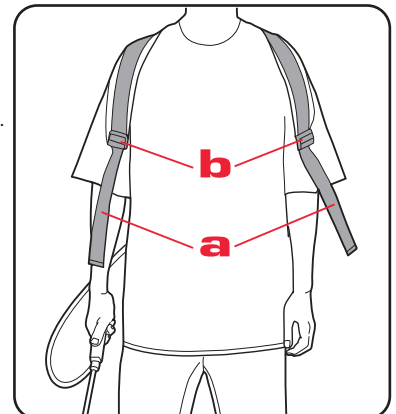
If using the Backpack Sprayer for the first time, we recommend fitting the harness over your shoulders before filling with any liquid, as it will be much lighter, making it easier to adjust the length to suit the user.

1. Attach the fastening clips of the harness to the mounting points on each side of the tank.



2. Slip the harness over your shoulders and adjust the length of the harness so that you can work without fatigue.

To do so, pull on the two ends **(a)** of the harness to shorten it or on the two harness release mechanisms **(b)** to extend it.



5 YEAR
REPLACEMENT WARRANTY

2. PREPARATION

Spray Solution Mixture

WARNING! THIS PRODUCT IS DESIGNED FOR SPRAYING CONSUMER-GRADE HOME AND GARDEN CHEMICALS SUCH AS WEED KILLERS, FUNGICIDES, INSECTICIDES AND FERTILIZERS.

WARNING! DO NOT USE WITH FOODSTUFFS OR TO SPRAY LIQUIDS THAT EXCEED 40°C. DO NOT SPRAY ACIDIC, CAUSTIC AND FLAMMABLE LIQUIDS WHOSE FLASH POINT IS BELOW 55°C, AS WELL AS IMPREGNATING AGENTS, DISINFECTANT, PAINTS, VARNISHES, GREASE, GLAZES AND SYNTHETICALLY MANUFACTURED OILS.

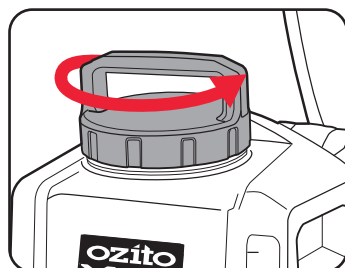
The backpack sprayer is designed for spraying the following solutions - Water, Pesticides, Weed killers, natural oils dissolved in water for example Neem oil, Rapeseed oil (Canola oil), and Fertilizers dissolved in water.

- Be aware of any hazards presented by the spray materials. Before using any pesticide or other spray materials with the product, carefully read the label on the original solution container and follow the manufacturer instructions.
- Fill the tank only with the amount of solution you intend to use and observe the quantities to be used as listed by the manufacturer of the solution.
- The spray solution must have a water-like consistency.
- The tank can be filled with a maximum 15 litres of liquid.
- Spray solutions can be prepared in a separate container and mixed thoroughly before being filled into the tank of the backpack sprayer.
- Organic spray solutions must be filtered prior to filling the sprayer.
- **DO NOT** use for storing liquids.- Clean the equipment immediately after each use as detailed in '**MAINTENANCE**'. This is the only way to keep the liquid carrying parts clean and prevent clogging. Clogged components can lead to defects.

Filling the Tank

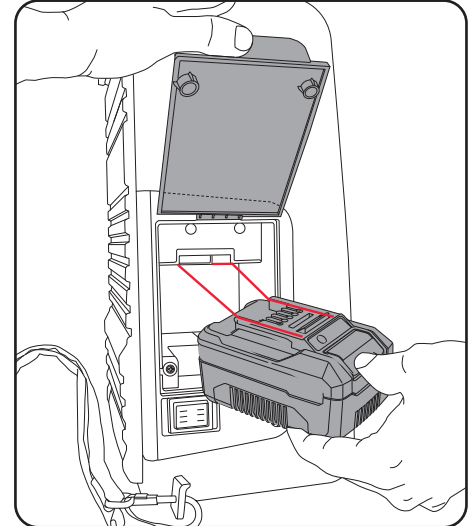
WARNING! ENSURE THE BACKPACK SPRAYER IS SWITCHED OFF AND THE BATTERY IS DISCONNECTED BEFORE PERFORMING ANY OF THE FOLLOWING TASKS.

1. Place the backpack sprayer on a level surface. Unscrew the tank lid. You will notice on the inside of the lid measuring ranges with 5ml, 10ml and 25ml contents.
2. Pour the amount of liquid (e.g. water) specified by the solution manufacturer into the tank filler opening, add the measured quantity of concentrated additive and close the container carefully.
3. Mix the concentrated additive with the water (or other liquid) by carefully shaking the backpack sprayer.



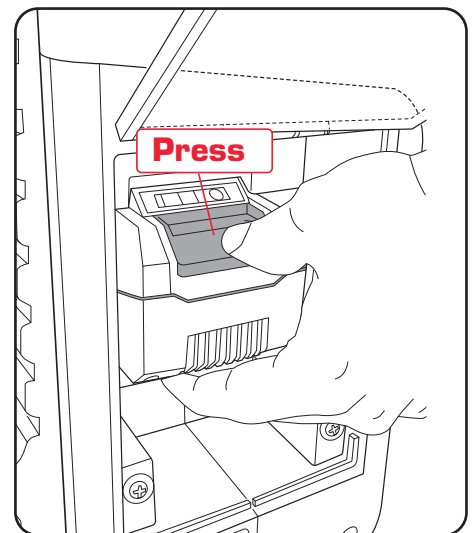
Inserting the Battery

1. Open the battery cover. The battery cover is held in place with magnets.
2. Align the battery with the recess in the opening as you slide the battery all the way so that it clicks in place.
3. Close the battery cover.



Removing the Battery

1. Open the battery cover.
2. To remove, press and hold the battery release tab as you slide the battery out.



OPERATION

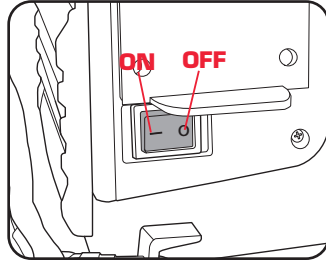
3. CONTROLS & OPERATION

WARNING! THE PRODUCT IS INTENDED FOR OUTDOOR USE IN A WELL-VENTILATED AREA.

Switching On and Off

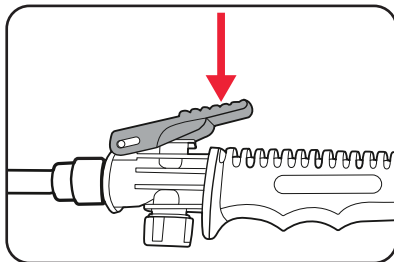
Only switch the backpack sprayer ON after first filling the tank with the spray solution and inserting the battery.

1. To switch the sprayer ON, move the toggle On/Off switch to position "I" (On). You will hear the pump activate for a few seconds to prime air from inside the tank.
2. To switch the sprayer OFF, move the On/Off switch to position "O" (Off).

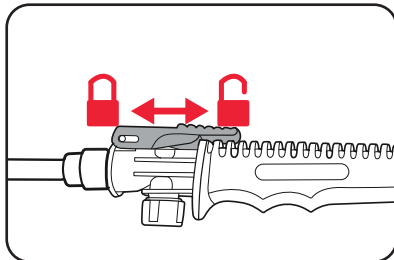


On Demand Spray Trigger

1. With the backpack sprayer switched on, press and hold trigger down to begin spraying.
2. Release trigger to stop flow.



When the spray trigger is pressed and then pushed forward, the trigger is locked in the ON position for continuous operation until the trigger lever is pulled back again and released.



Note:

1. If the tank pump contains too little spray solution or none at all, it will run after On/Off switch is switched on. Press the spray trigger for several seconds. The pump will fill up and spray solution will be ejected irregularly. Once the spray solution is ejected evenly, the pump will switch off upon releasing the spray trigger and will switch on again upon pressing the spray lever.
2. If there is too little spray solution in the tank, the pump will suck in too little spray solution (see 1.) and will continue to run upon releasing the spray trigger. Top up with spray solution (see section **Spray Solution Mixture**).
3. To empty the tank as far as possible during spraying, bend slightly forwards and a little to the right as the suction hose on the inside of the tank is on the right-hand side.

Adjusting the Spray Pattern

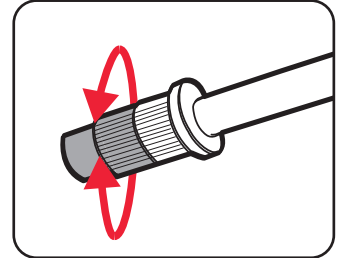
The shape of the spray can be adjusted from spot spraying (Jet) to a wide angle (Fine mist) for a bigger area coverage. Rotate the nozzle to best suit your application.

Jet (Spot spraying)

Loosen the nozzle by turning counter-clockwise.

Wide Angle (Fine mist)

Tighten the nozzle by turning clockwise.



Spraying

WARNING! ALWAYS WEAR APPROPRIATE PERSONAL PROTECTIVE EQUIPMENT (PPE) SUITABLE FOR THE SPRAY SOLUTION BEING USED WHEN OPERATING THE BACKPACK SPRAYER, SUCH AS A BREATHING MASK, SAFETY GOGGLES, PROTECTIVE GLOVES AND PROTECTIVE CLOTHING.

- Aim the sprayer nozzle directly at the plants or objects you wish to spray.
- Be aware of splash back, stand far enough from the object being sprayed to prevent the spray splashing back onto you.
- Never point the spray end of the wand at yourself or others.
- Avoid spraying on windy days. Spray can be accidentally blown onto plants or objects that should not be sprayed.
- Do not use a very wide jet when spraying plants or other objects directly.
- When the spray trigger is pressed, recoil forces can occur suddenly, in the worst case scenario causing the nozzle to point towards the body. Always keep tight hold of the spray gun handle.
- Perform spraying only when the tank is vertical or upright.
- Never leave spray solution in the tank. Follow. Clean the equipment immediately after each use as detailed in **'MAINTENANCE'**.

WARNING! BE AWARE OF OTHER PEOPLE AND ANIMALS IN THE AREA WHERE YOU ARE TO BE OPERATING THE BACKPACK SPRAYER, SPRAY DOWNWIND.

MAINTENANCE

⚠ WARNING! ENSURE THE BACKPACK SPRAYER IS SWITCHED OFF AND THE BATTERY IS REMOVED PRIOR TO ANY MAINTENANCE.

⚠ WARNING! ALWAYS STORE AND DISPOSE OF CHEMICALS PROPERLY. DISPOSAL OF CONTAMINATED RINSE WATER SHOULD BE PERFORMED ACCORDING TO LOCAL ORDINANCES AND BYLAWS.

Cleaning the Outside

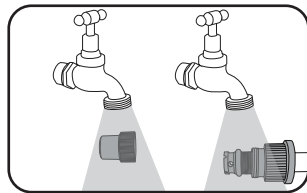
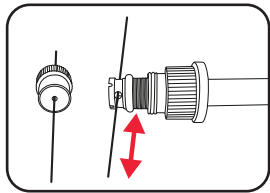
- We recommend that you clean the device immediately each time you have finished using it.
- Clean the equipment regularly with a moist cloth and some soft soap. Do not use cleaning agents or solvents; these could attack the plastic parts of the equipment. Ensure that no water can seep into the device. The ingress of water into an electric tool increases the risk of an electric shock.

Cleaning the inside of the Tank

- After use, clean the equipment and leave the tank open to dry. Note the cleaning instructions in the directions for use that came with the chemical in addition to these cleaning instructions.
 - Remove any remaining liquid from the tank through the tank's filler opening and store the liquid properly for subsequent use or dispose of it in accordance with the applicable regulations.
1. Unscrew the tank lid, remove the filling sieve and clean it with water as required.
 2. Tilt the tank forwards and drain it completely.
 3. Fill the tank approximately one-third full with clean water and a small amount of mild household detergent.
 4. Refit the filling sieve in the tank opening, making sure the seal is correctly seated and screw the tank lid to the tank opening.
 5. Shake the backpack sprayer vigorously several times.
 6. Fit a battery. Spray until the tank has been emptied. Make sure to direct the spray toward an area that will not be damaged by the spray solution.
 7. Repeat the procedure with clean water. It may be necessary to rinse the tank more than once, then drain again as directed above.
 8. Allow the unit to completely dry before reinstalling parts and storing the unit.

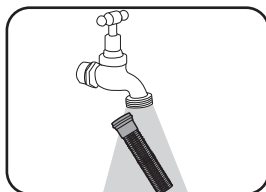
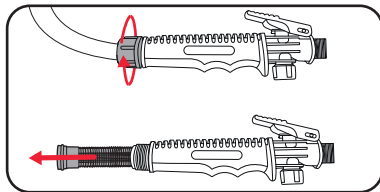
Cleaning the Nozzle

- If the spray nozzle becomes clogged, use the following steps to clear the blockage.
1. Unscrew the nozzle fully from the spray wand by turning counter-clockwise.
 2. Push a small wire (not included) through the cross holes to clear any debris. Rinse the cross holes and nozzle with clean water.
 3. Wipe the nozzle and cross holes with a clean dry cloth and reinstall the nozzle.



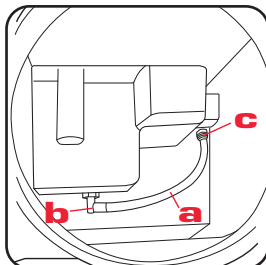
Cleaning the Handle Filter

- Clean the filter in the handle as required, to do so proceed as follows:
1. Unscrew the hose from the handle by turning counter-clockwise.
 2. Pull the filter out of the handle and clean with clear water.
 3. Reinstall the filter and screw the hose securely back into the handle.



Cleaning the Intake Filter

- Clean the intake filter in the tank as required, to do so proceed as follows:
1. Empty the tank as described in 'Cleaning the inside of the tank'.
 2. Pull the suction hose (a) with intake filter off the pump connection (b).
 3. Rinse the suction hose and clean the intake filter (c) with a brush in clear water.
 4. Refit the suction hose (a) to the pump connection (b) and make sure that the intake filter extends to the bottom of the tank. Only then can the tank be properly emptied during spraying.



TROUBLESHOOTING

Problem	Possible Cause	Remedy
Sprayer does not start.	Equipment not switched on.	Turn On/Off switch to 'I' On.
	Battery not correctly inserted.	Remove Battery and reinsert.
	Battery is low charge.	Charge Battery.
The equipment does not spray, or only sprays at reduced power, even though the tank is full.	Nozzle completely or partly clogged.	Clean the Nozzle.
	Intake filter in the tank is completely or partly clogged.	Clean the Intake Filter.
	The handle filter is completely or partly clogged.	Clean the Handle Filter.
	Liquid too viscous and therefore unsuitable.	Remove liquid, clean equipment and Tank.
Too much spray mist.	Distance from object too great.	Reduce spraying distance.
	Spray width too great.	Reduce spray width.
Motor stops while spraying.	Battery has no power.	Insert a charged Battery

Note: Ozito will not be responsible for any damage or injuries caused by the repair of the backpack sprayer by an unauthorised person or by mishandling of the sprayer. This tool is designed for DIY use - use in commercial or industrial environments will void the warranty.

Spare parts can be ordered from the Special Orders Desk at your local Bunnings Warehouse.

For further information, visit www.ozito.com.au or contact Ozito

Customer Service:

Australia 1800 069 486, New Zealand 0508 069 486

E-mail: hello@ozito.com.au

DESCRIPTION OF SYMBOLS

v	Volts.	Hz	Hertz.
a.c./~	Alternating current.	W	Watts.
d.c./—	Direct current.	IPX4	Ingress protection from water.
bar	Pressure rating.	°C	Degrees Celsius.
psi	Pound per square inch.	L	Litres
L/H	Litres per hour.	mm	Millimetre.
	Warning!		Regulatory compliance mark (RCM)
	Do not use in the rain or leave outdoors while raining. Protect from the damp!		Wear a breathing mask suitable for the spray solution being used.
	Wear safety goggles suitable for the spray solution being used.		Wear protective gloves suitable for the spray solution being used.
	Wear protective clothing suitable for the spray solution being used.		DO NOT leave the equipment in direct sunlight.
	Protect the equipment from freezing temperatures.		Wear suitable safety footwear.
	Read instruction manual to reduce the risk of injury.		
	Keep bystanders and animals away at a safe distance while you are spraying.		

CARING FOR THE ENVIRONMENT



Power tools that are no longer usable should not be disposed of with household waste but in an environmentally friendly way. Please recycle where facilities exist. Check with your local council authority for recycling advice.



Recycling packaging reduces the need for landfill and raw materials. Reuse of recycled material decreases pollution in the environment. Please recycle packaging where facilities exist. Check with your local council authority for recycling advice.



ELECTRICAL SAFETY



WARNING! When using electric machines, basic safety precautions, including the following, should always be followed to reduce risk of fire, electric shock, personal injury and material damage.

-Read the whole manual carefully and make sure you know how to switch the machine off in an emergency, before operating the machine. Save these instructions and other documents supplied with this machine for future reference.

-This appliance is not intended for use by persons (including children) with reduced physical, sensory or mental capabilities, or lack of experience and knowledge, unless they have been given supervision or instruction concerning use of the appliance by a person responsible for their safety.

Children should be supervised to ensure that they do not play with the appliance.

-This appliance is compatible and only to be used with all batteries & chargers from the Ozito PXC range. Refer to the PXC battery and charger manuals for information regarding charging, use and storage.

-Remove the batteries from the appliance before being charged.

-Do not combine different types of batteries or new and used batteries.

-If the appliance is to be stored unused for a long period, the batteries should be removed.

-Do not use modified or damaged batteries.



GENERAL MACHINE SAFETY WARNINGS



WARNING! Read all safety warnings, instructions, illustrations and specifications provided with this machine. Failure to follow all instructions listed below may result in electric shock, fire and/or serious injury.

Save all warnings and instructions for future reference.

The term "machine" in the warnings refers to your mains-operated (corded) machine or battery-operated (cordless) machine.

1) Work area safety

- a) **Keep work area clean and well lit.** Cluttered or dark areas invite accidents.
- b) **Do not operate machines in explosive atmospheres, such as in the presence of flammable liquids, gases or dust.** Machines create sparks which may ignite the dust or fumes.
- c) **Keep children and bystanders away while operating a machine.** Distractions can cause you to lose control.

2) Electrical safety

- a) **Machine plugs must match the outlet. Never modify the plug in any way. Do not use any adapter plugs with earthed (grounded) machines.** Unmodified plugs and matching outlets will reduce risk of electric shock.
- b) **Avoid body contact with earthed or grounded surfaces, such as pipes, radiators, ranges and refrigerators.** There is an increased risk of electric shock if your body is earthed or grounded.
- c) **Do not expose machines to rain or wet conditions.** Water entering a machine will increase the risk of electric shock.
- d) **Do not abuse the cord. Never use the cord for carrying, pulling or unplugging the machine. Keep cord away from heat, oil, sharp edges or moving parts.** Damaged or entangled cords increase the risk of electric shock.
- e) **When operating a machine outdoors, use an extension cord suitable for outdoor use.** Use of a cord suitable for outdoor use reduces the risk of electric shock.
- f) **If operating a power tool in a damp location is unavoidable, use a residual current device (RCD) protected supply.** Use of an RCD reduces the risk of electric shock.

3) Personal safety

- a) **Stay alert, watch what you are doing and use common sense when operating a machine. Do not use a machine while you are tired or under the influence of drugs, alcohol or medication.** A moment of inattention while operating machines may result in serious personal injury.
- b) **Use personal protective equipment. Always wear eye protection.** Protective equipment such as a dust mask, non-skid safety shoes, hard hat or hearing protection used for appropriate conditions will reduce personal injuries.
- c) **Prevent unintentional starting. Ensure the switch is in the off-position before connecting to power source and/or battery pack, picking up or carrying the machine.** Carrying machines with your finger on the switch or energising machines that have the switch on invites accidents.
- d) **Remove any adjusting key or wrench before turning the machine on.** A wrench or a key left attached to a rotating part of the machine may result in personal injury.
- e) **Do not overreach. Keep proper footing and balance at all times.** This enables better control of the machine in unexpected situations.
- f) **Dress properly. Do not wear loose clothing or jewellery. Keep your hair and clothing away from moving parts.** Loose clothes, jewellery or long hair can be caught in moving parts.
- g) **If devices are provided for the connection of dust extraction and collection facilities, ensure these are connected and properly used.** Use of dust collection can reduce dust-related hazards.
- h) **Do not let familiarity gained from frequent use of machines allow you to become complacent and ignore machine safety principles.** A careless action can cause severe injury within a fraction of a second.

4) Machine use and care

- a) **Do not force the machine. Use the correct machine for your application.** The correct machine will do the job better and safer at the rate for which it was designed.
- b) **Do not use the machine if the switch does not turn it on and off.** Any machine that cannot be controlled with the switch is dangerous and must be repaired.
- c) **Disconnect the plug from the power source and/or remove the battery pack, if detachable, from the machine before making any adjustments, changing accessories, or storing machines.** Such preventive safety measures reduce the risk of starting the machine accidentally.
- d) **Store idle machines out of the reach of children and do not allow persons unfamiliar with the machine or these instructions to operate the machine.** Machines are dangerous in the hands of untrained users.
- e) **Maintain machines and accessories. Check for misalignment or binding of moving parts, breakage of parts and any other condition that may affect the machine's operation. If damaged, have the machine repaired before use.** Many accidents are caused by poorly maintained machines.
- f) **Keep cutting machines sharp and clean.** Properly maintained cutting machines with sharp cutting edges are less likely to bind and are easier to control.
- g) **Use the machine, accessories and machine bits etc. in accordance with these instructions, taking into account the working conditions and the work to be performed.** Use of the machine for operations different from those intended could result in a hazardous situation.
- h) **Keep handles and grasping surfaces dry, clean and free from oil and grease.** Slippery handles and grasping surfaces do not allow for safe handling and control of the machine in unexpected situations.

5) Battery machine use and care

- a) **Recharge only with the charger specified by the manufacturer.** A charger that is suitable for one type of battery pack may create a risk of fire when used with another battery pack.
- b) **Use machines only with specifically designated battery packs.** Use of any other battery packs may create a risk of injury and fire.
- c) **When battery pack is not in use, keep it away from other metal objects, like paper clips, coins, keys, nails, screws or other small metal objects, that can make a connection from one terminal to another.** Shorting the battery terminals together may cause burns or a fire.
- d) **Under abusive conditions, liquid may be ejected from the battery; avoid contact. If contact accidentally occurs, flush with water. If liquid contacts eyes, additionally seek medical help.** Liquid ejected from the battery may cause irritation or burns.
- e) **Do not use a battery pack or machine that is damaged or modified.** Damaged or modified batteries may exhibit unpredictable behaviour resulting in fire, explosion or risk of injury.
- f) **Do not expose a battery pack or machine to fire or excessive temperature.** Exposure to fire or temperature above 130 °C may cause explosion.
- g) **Follow all charging instructions and do not charge the battery pack or machine outside the temperature range specified in the instructions.** Charging improperly or at temperatures outside the specified range may damage the battery and increase the risk of fire.

6) Service

- a) **Have your machine serviced by a qualified repair person using only identical replacement parts.** This will ensure that the safety of the machine is maintained.
- b) **Never service damaged battery packs.** Service of battery packs should only be performed by the manufacturer or authorized service providers.



GARDEN SPRAYER SAFETY WARNINGS



WARNING! This appliance is not intended for use by persons (including children) with reduced physical, sensory or mental capabilities, or lack of experience and knowledge, unless they have been given supervision or instruction concerning use of the appliance by a person responsible for their safety.

Young children should be supervised to ensure that they do not play with the appliance.

- Do not spray flammable liquids, such as petrol, to reduce the risk of fire or explosion.
- Always follow the chemical manufacturer's instructions printed on their product labelling for use, cleaning, and storage. Chemicals should be stored out of the reach of children.
- Do not spray any material where the hazard is not known.
- Do not spray where spark, flame, or other source of ignition is present.
- Do not spray in the direction of people or animals. Always spray downwind.
- Do not smoke, eat, or drink while using the product.
- Do not discharge directly against skin.
- Do not let the spray materials come in contact with skin. If contact does occur, wash immediately with soap and plenty of water.
- To reduce exposure to spray materials, wear approved safety equipment, such as face mask designed for spraying, gloves, and other appropriate protective equipment.
- Do not use flammable solvents or abrasive cleaning agents to clean the product.
- Be aware of any hazards presented by the spray materials. Before using any pesticide or other spray materials with the product, carefully read the label on the original container and follow the instructions.
- Keep the area clear of all bystanders, children, and pets while spraying.
- Remember to properly replace and tighten the spray tank cover after pouring liquid into the spray tank.
- Use only consumer-grade water-based lawn and garden chemicals.
- Do not use commercial-grade chemicals or chemicals for commercial or industrial purposes.
- Do not use caustic (alkali) self-heating or corrosive (acid) liquids with the product. These can corrode metal parts or weaken the tank and hose.
- Do not leave residue or spray material in the spray tank after using the product. Clean after each use.
- Electric shock hazard. Do not spray towards electrical outlets.
- Aim the nozzle directly at the plants or objects you intend to spray.
- Do not pour hot or boiling liquids into the spray tank. These can weaken or damage the hose or spray tank.
- Do not overfill the tank.

- Always check for leaks. If any are found, correct them before using the product.
- The spray area must be well ventilated.
- Always inspect both the inside and outside of the product before each use.
- Liquids to be sprayed must be as thin as water: Thicker liquids will not spray properly.
- Spray materials may be premixed and poured into the spray tank using a funnel, if necessary.
- When using a measuring container other than the measuring cup, or when using a funnel to fill the tank, thoroughly clean and rinse these items after use. When premixing spray materials, rinse the container used for mixing.
- Ensure that the spray materials are directed at an area that will not be damaged by the spray materials.
- Do not spray material onto the unit.
- Avoid spraying on windy days. The spray materials can be accidentally blown onto plants or objects that should not be sprayed.
- Keep spray materials away from eyes. If spray materials come in contact with the eyes, wash them immediately with clean water. If irritation is still present, immediately seek medical help.
- The product may be operated with the spray wand handle resting in the cradle, or may be removed from the cradle and be held by the operator.
- After every use, thoroughly wash your hands and any area where skin has been exposed to the spray.
- Maintain the product. Thoroughly inspect both the inside and outside of the product and examine the components before each use. Check for cracked and deteriorated hoses, leaks, clogged nozzles, and missing or damaged parts. If damaged, have the product repaired before use. Many accidents are caused by poorly maintained products.



WARNING! When servicing, use only identical replacement parts. Use of any other parts may create a hazard or cause product damage. To ensure safety and reliability, all repairs should be performed by a qualified service technician.



Danger! Always remove the battery from the backpack sprayer:

- when draining, cleaning, or storing to avoid accidental starting.
- when the equipment is left unattended,
- when the equipment is being checked, cleaned, or having maintenance work done,
- when transporting in vehicles.