

**GB** Operating Instructions  
Vacuum cleaner

**Taurus**<sup>TM</sup>

**After Sales Support**

TEL: 1300 130 579  
WEB: [www.rossmac.com](http://www.rossmac.com)

 **N16188**

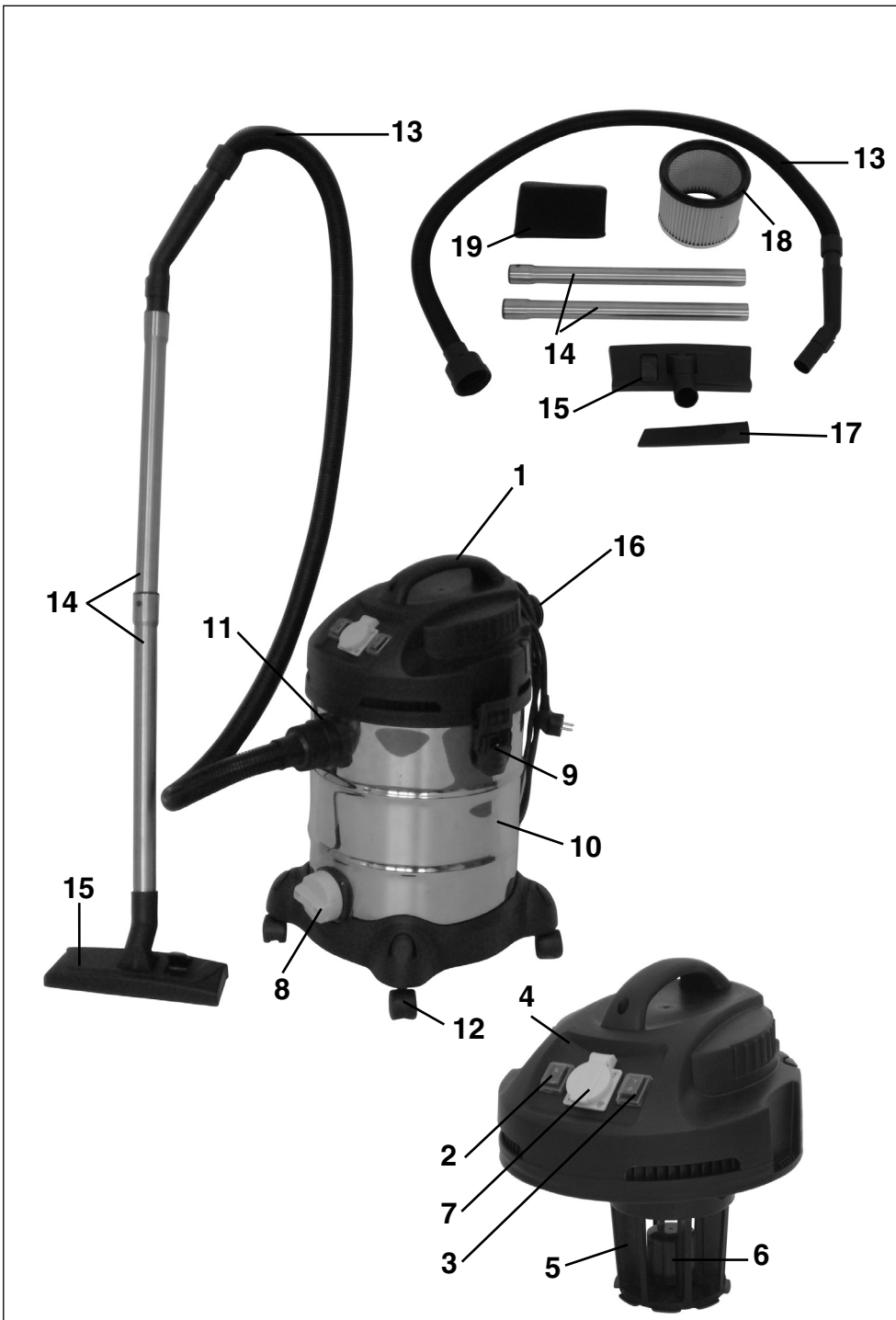


**BT-VC 1500 SA**

# Vacuum cleaner

## What your 1 year warranty means

Great care has gone into the manufacture of this product and it should therefore provide you with years of good service when used properly. In the event of product failure within its intended use over the course of the first 1 year after the date of purchase, we will remedy the problem as quickly as possible once it has been brought to our attention. In the unlikely event of such an occurrence, or if you require any information about the product please contact us via our after sales support services, details of which can be found in this manual and on the product itself.



Technical data



240 V ~ 50 Hz



1000 W + 1400 W



30 l

Before you put the vacuum cleaner into operation, carefully read the following safety regulations and the operating instructions.

If you give the equipment to any other persons, give them the operating instructions as well.

**Keep these instructions in a safe place.**

### Packaging

The unit is supplied in packaging to prevent it from being damaged in transit. The raw materials in this packaging can be reused or recycled.

## 1. Safety Information

- Attention: Before assembly and starting operation, read the operating instructions carefully.
- Check that the mains voltage corresponds to the details on the type plate.
- Only connect to a proper 240 volt, 50 Hz earthed socket.
- Fuse protection 10 A.
- Pull the mains plug out of the socket when: the unit is not in use, before opening the unit, before cleaning and maintenance
- Never clean with solvents.
- Do not use the cable to pull the plug out of the socket.
- When unit is ready for use, do not leave unattended.
- Safeguard from children
- Care must be taken that the mains connection lead is not damaged by being driven over, crushed, stretched, etc.
- The unit must not be operated if the mains connection lead is not in perfect condition.
- Replacement mains connection leads must not differ from the versions indicated by the manufacturer Mains connection cable: R 440 3G 1,0 mm<sup>2</sup>
- On no account vacuum: burning matches, glowing ashes and cigarette ends, inflammable, corrosive, fire hazard or explosive substances, vapours and liquids.
- This unit is not suitable for vacuuming dust which is damaging to health.
- Store the unit in a dry place.
- Do not operate a defective unit.
- Servicing only by an authorized after-sales service point.
- Use only for operations for which the unit is intended.

- Take great care when cleaning stairs.
- Use only manufacturer's attachments and spare parts.
- "This appliance is not intended for use by persons (including children) with reduced physical, sensory or mental capabilities, or lack of experience and knowledge, unless they have been given supervision or instruction concerning use of the appliance by a person responsible for their safety".
- Children should be supervised to ensure that they do not play with the appliance.

## 2. Proper use

Please note that our equipment has not been designed for use in commercial, trade or industrial applications. Our warranty will be voided if the machine is used in commercial, trade or industrial businesses or for equivalent purposes.

## 3. Items supplied

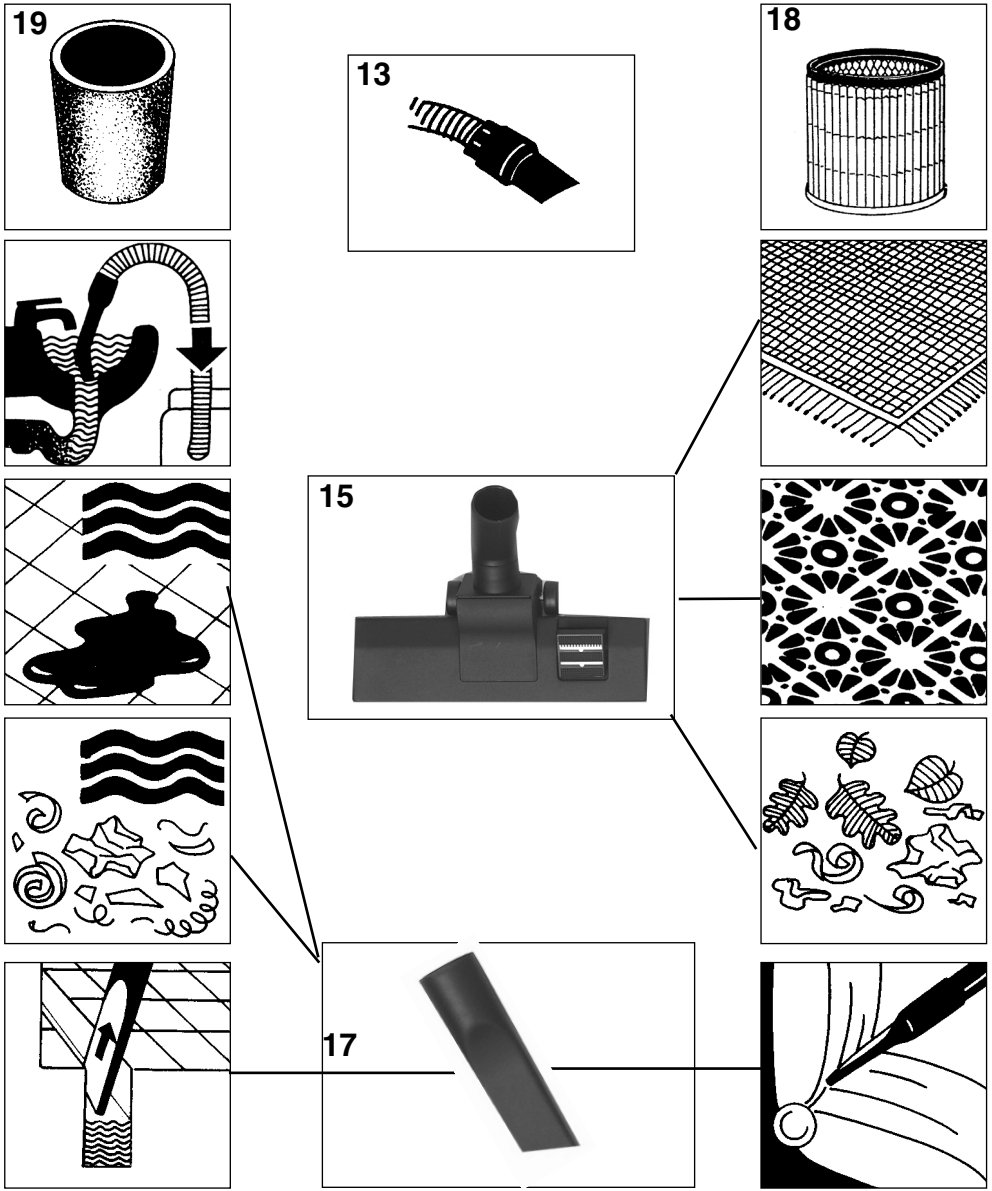
- |    |  |
|----|--|
| 1  | Handle                                     |
| 2  | Automatic switch                           |
| 3  | ON/OFF switch                              |
| 4  | Top section                                |
| 5  | Filter basket                              |
| 6  | Safety float valve                         |
| 7  | Automatic socket-outlet for electric tools |
| 8  | Water drainage screw                       |
| 9  | Clasp                                      |
| 10 | Container                                  |
| 11 | Vacuum hose connection                     |
| 12 | Rollers                                    |
| 13 | Flexible vacuum hose                       |
| 14 | Tube                                       |
| 15 | Dual purpose nozzle                        |
| 16 | Blow connector                             |
| 17 | Crevice nozzle                             |
| 18 | Pleated filter                             |
| 19 | Foamed plastic filter                      |

## 4. Ordering replacement parts

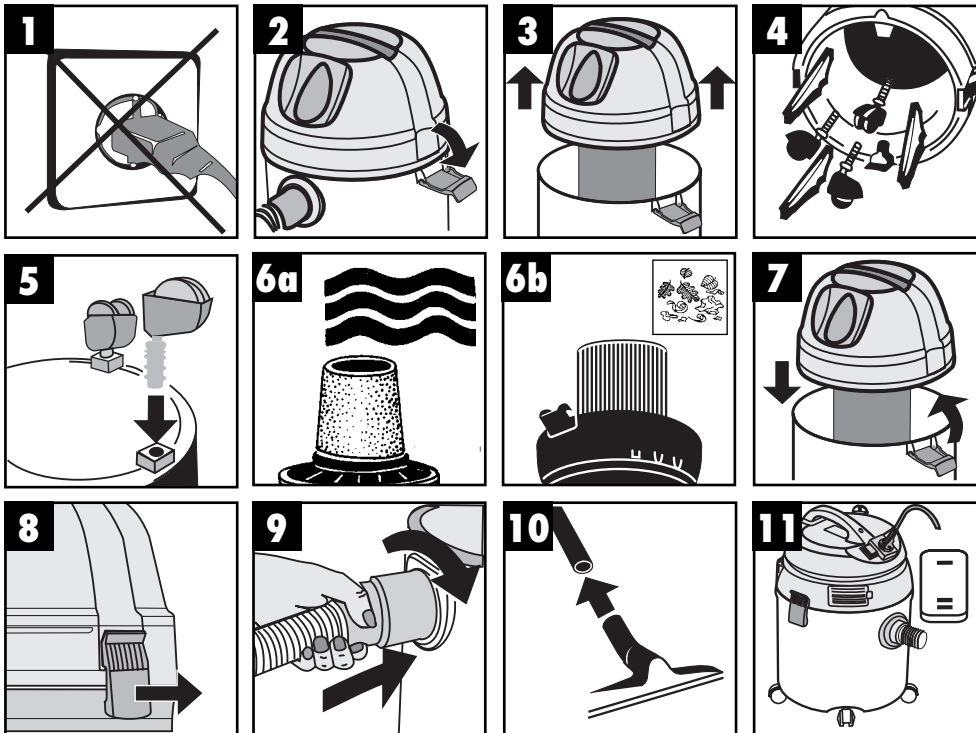
Please quote the following data when ordering replacement parts:

- Type of machine
- Article number of the machine
- Identification number of the machine
- Replacement part number of the part required

### Overview of nozzles



## Assembly



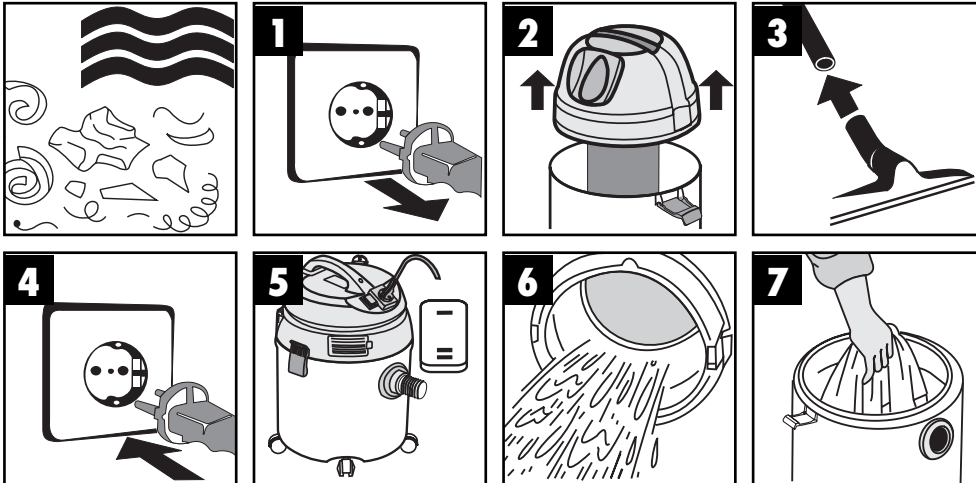
### Please note:

**Figure 6a:** Use the supplied foamed plastic filter for wet vacuum-cleaning

**Figure 6b:** Use the already fitted pleated filter for dry vacuum-cleaning

**Figure 11:** Switch position 1: normal mode  
Switch position 2: automatic mode

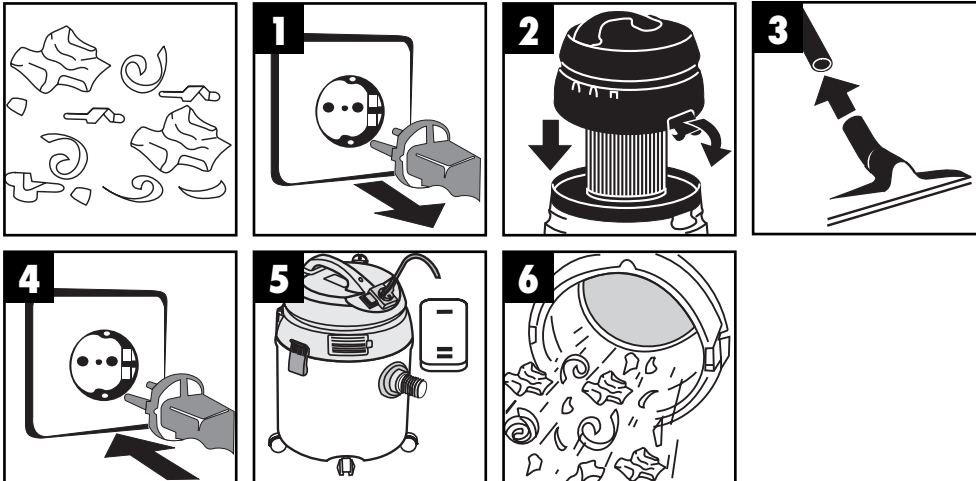
## Wet vacuum-cleaning



For wet-vacuuming, slip the supplied foamed plastic filter over the filter basket (Figure 2). The pleated filter already fitted upon delivery is not suitable for wet-vacuuming!

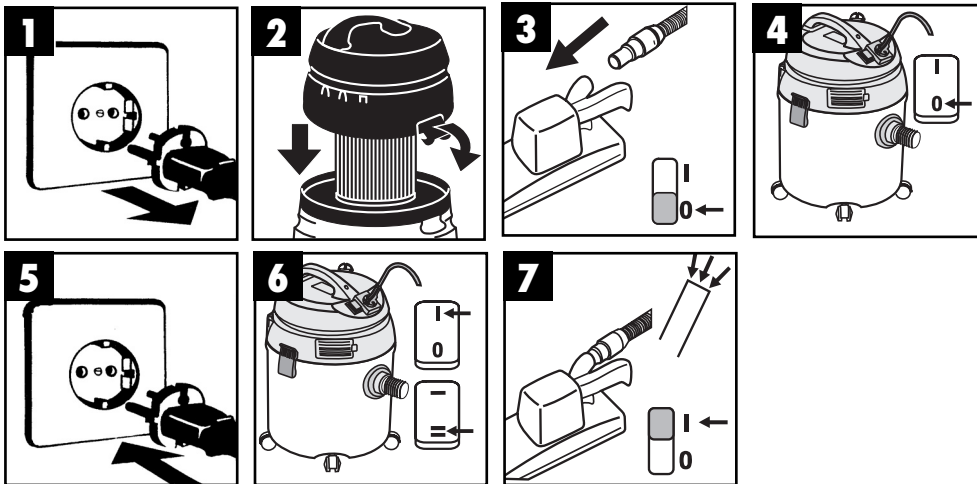


## Dry vacuum-cleaning



For dry-vacuuming, slip the pleated filter (Figure 2) onto the filter basket. The pleated filter is suitable for dry-vacuuming only.

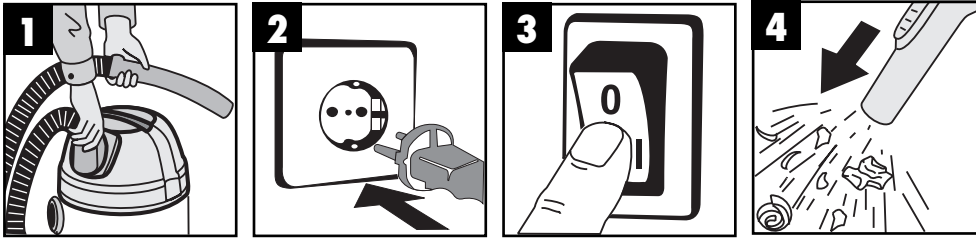
### Automatic mode with tools



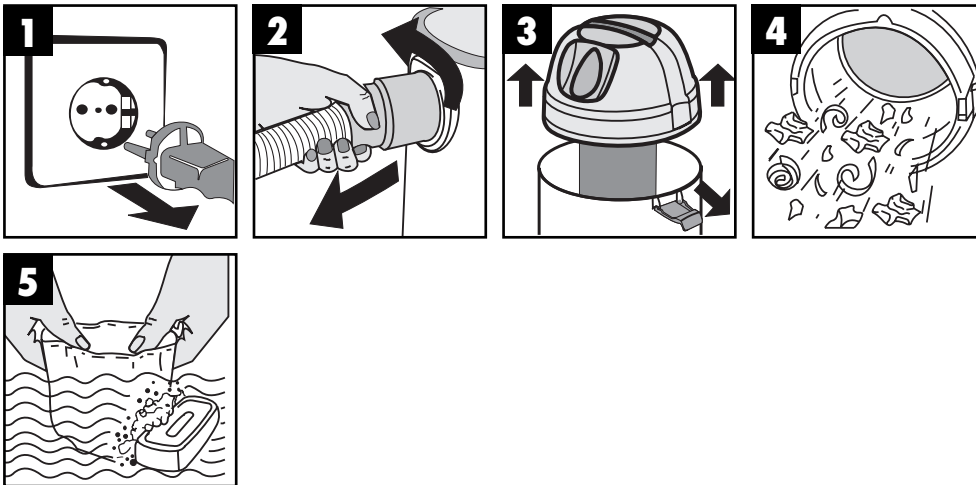
#### Maximum power outlet 1400 W

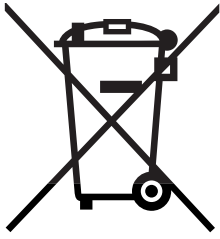
Connect the electric tool to the integrated socket-outlet. Set the ON/OFF switch of the vacuum cleaner to position 1 (Figure 6). The vacuum cleaner will switch on automatically as soon as you switch on the electric tool (Figure 7). When you switch off the electric tool, the vacuum cleaner will also switch off after a pre-set delay.

### Blowing



### Maintenance - cleaning





Never place any electric tools in your household refuse.

Seek advice on correct disposal from local waste authorities.



The reprinting or reproduction by any other means, in whole or in part, of documentation and papers accompanying products is permitted only with the express consent of ISC GmbH.

Technical changes subject to change

After Sales Support TEL: 1300 130 579 WEB: [www.rossmac.com](http://www.rossmac.com)

EH 12/2007