

MAINTENANCE

WARNING! ENSURE THE TOOL IS DISCONNECTED AND ALLOWED TO COOL DOWN BEFORE PERFORMING ANY MAINTENANCE.

After each use the container, hose and steam plate is cleaned thoroughly with clean water. This will prevent any blockages occurring and provide reliable performance when you next come to use it.

If the body of the wallpaper steamer requires cleaning, do not use solvents but a moist soft cloth only.

When finished with the steamer allow the machine to cool before emptying the tank, and always store the machine empty.

Descaling The Tank

Descaling the tank means cleaning the deposits that can build up from the use of water with high mineral content. This process will maintain good performance of the appliance, it may be necessary to descale the element in the tank. Descaling products available at your local Bunnings Warehouse or Homebase store can be used in your appliance. Always follow the manufacturers instructions.

Note: Ozito Industries will not be responsible for any damage or injuries caused by the repair of the sander by an unauthorised person or by mishandling of the spray gun.

TROUBLESHOOTING

Problem	Cause	Solution
The unit fails to produce steam	No supply voltage	Check the supply voltage, the power plug and the socket-outlet.
	Safety cut out	The unit is not on a level surface and run low on water causing the thermal safety cut out to engaged. Allow the appliance to cool down fill with water and place on level ground. The machine will reset after 15 minutes.
The tank leaks steam from the pressure valve	Blockage in hose.	Allow the appliance to cool down and then check the hose for blockages or kinks.

Keep the noise emissions and vibrations to a minimum.

- Only use appliances which are in perfect working order.
- Service and clean the appliance regularly.
- Adapt your working style to suit the appliance.
- Do not overload the appliance.
- Have the appliance serviced whenever necessary.
- Switch the appliance off when it is not in use.
- Wear protective gloves.



For EU countries only

Never place any electric power tools in your household refuse.

To comply with European Directive 2012/19/EC concerning old electric and electronic equipment and its implementation in national laws, old electric power tools have to be separated from other waste and disposed of in an environment-friendly fashion, e.g. by taking to a recycling depot.

Recycling alternative to the return request.

As an alternative to returning the equipment to the manufacturer, the owner of the electrical equipment must make sure that the equipment is properly disposed of if he no longer wants to keep the equipment. The old equipment can be returned to a suitable collection point that will dispose of the equipment in accordance with the national recycling and waste disposal regulations. This does not apply to any accessories or aids without electrical components supplied with the old equipment.

The reprinting or reproduction by any other means, in whole or in part, of documentation and papers accompanying products is permitted only with the express consent of the iSC GmbH.

Subject to technical changes

ELECTRICAL SAFETY

WARNING! When using mains-powered tools, basic safety precautions, including the following, should always be followed to reduce risk of fire, electric shock, personal injury and material damage. Read the whole manual carefully and make sure you know how to switch the tool off in an emergency, before operating the tool. Save these instructions and other documents supplied with this tool for future reference. Before you connect the equipment to the mains supply make sure that the data on the rating plate are identical to the mains data.

Using an Extension Lead

Always use an approved extension lead suitable for the power input of this tool. Before use, inspect the extension lead for signs of damage, wear and ageing. Replace the extension lead if damaged or defective. When using an extension lead on a reel, always unwind the lead completely. Use of an extension lead not suitable for the power input of the tool or which is damaged or defective may result in a risk of fire and electric shock.

GENERAL POWER TOOL SAFETY WARNINGS

WARNING! "Read all safety warnings, instructions, illustrations and specifications provided with this power tool." Failure to follow the warnings and instructions may result in electric shock, fire and/or serious injury. Save all warnings and instructions for future reference. The term "power tool" in the warnings refers to mains-operated (corded) power tool or battery-operated (cordless) power tool.

- Work area safety**
 - Keep work area clean and well lit. Cluttered or dark areas invite accidents.
 - Do not operate power tools in explosive atmospheres, such as in the presence of flammable liquids, gases or dust. Power tools create sparks which may ignite the dust or fumes.
 - Keep children and bystanders away while operating a power tool. Distractions can cause you to lose control.
- Electrical safety**
 - Power tool plugs must match the outlet. Never modify the plug in any way. Do not use any adapter plugs with earthed (grounded) power tools. Unmodified plugs and matching outlets will reduce risk of electric shock.
 - Avoid body contact with earthed or grounded surfaces, such as pipes, radiators, ranges and refrigerators. There is an increased risk of electric shock if your body is earthed or grounded.
 - Do not expose power tools to rain or wet conditions. Water entering a power tool will increase the risk of electric shock.
 - Do not abuse the cord. Never use the cord for carrying, pulling or unplugging the power tool. Keep cord away from heat, oil, sharp edges or moving parts. Damaged or entangled cords increase the risk of electric shock.
 - When operating a power tool outdoors, use an extension cord suitable for outdoor use. Use of a cord suitable for outdoor use reduces the risk of electric shock.
 - If operating a power tool in a damp location is unavoidable, use a residual current device (RCD) protected supply. Use of an RCD reduces the risk of electric shock.
- Personal safety**
 - Stay alert, watch what you are doing and use common sense when operating a power tool. Do not use a power tool while you are tired or under the influence of drugs, alcohol or medication. A moment of inattention while operating power tools may result in serious personal injury.
 - Use personal protective equipment. Always wear eye protection. Protective equipment such as dust mask, non-skid safety shoes, hard hat, or hearing protection used for appropriate conditions will reduce personal injuries.
 - Prevent unintentional starting. Ensure the switch is in the off-position before connecting to power source and/or battery pack, picking up or carrying the tool. Carrying power tools with your finger on the switch or energising power tools that have the switch on invites accidents.
- Remove any adjusting key or wrench before turning the power tool on. A wrench or a key left attached to a rotating part of the power tool may result in personal injury.
- Do not overreach. Keep proper footing and balance at all times. This enables better control of the power tool in unexpected situations.
- Dress properly. Do not wear loose clothing or jewellery. Keep your hair, clothing and gloves away from moving parts. Loose clothes, jewellery or long hair can be caught in moving parts.
- If devices are provided for the connection of dust extraction and collection facilities, ensure these are connected and properly used. Use of dust collection can reduce dust-related hazards.
- Do not let familiarity gained from frequent use of tools allow you to become complacent and ignore tool safety principles. A careless action can cause severe injury within a fraction of a second.
- Power tool use and care**
 - Do not force the power tool. Use the correct power tool for your application. The correct power tool will do the job better and safer at the rate for which it was designed.
 - Do not use the power tool if the switch does not turn on and off. Any power tool that cannot be controlled with the switch is dangerous and must be repaired.
 - Disconnect the plug from the power source and/or remove the battery pack, if detachable, from the power tool before making any adjustments, changing accessories, or storing power tools. Such preventive safety measures reduce the risk of starting the power tool accidentally.
 - Store idle power tools out of the reach of children and do not allow persons unfamiliar with the power tool or these instructions to operate the power tool. Power tools are dangerous in the hands of untrained users.
 - Maintain power tools and accessories. Check for misalignment or binding of moving parts, breakage of parts and any other condition that may affect the power tool's operation. If damaged, have the power tool repaired before use. Many accidents are caused by poorly maintained power tools.
 - Keep cutting tools sharp and clean. Properly maintained cutting tools with sharp cutting edges are less likely to bind and are easier to control.
 - Use the power tool, accessories and tool bits etc. in accordance with these instructions, taking into account the working conditions and the work to be performed. Use of the power tool for operations different from those intended could result in a hazardous situation.
 - Keep handles and grasping surfaces dry, clean and free from oil and grease. Slippery handles and grasping surfaces do not allow for safe handling and control of the tool in unexpected situations.
- Service**
 - Have your power tool serviced by a qualified repair person using only identical replacement parts. This will ensure that the safety of the power tool is maintained.

DESCRIPTION OF SYMBOLS

Danger! Read the operating instructions to reduce the risk of inquiry.

Double insulated / Protection class II

Caution! Wear ear-muffs. The impact of noise can cause damage to hearing.

Caution! Wear a breathing mask. Dust which is injurious to health can be generated when working on wood and other materials. Never use the device to work on any materials containing asbestos!

Caution! Wear safety goggles. Sparks generated during working or splinters, chips and dust emitted by the device can cause loss of sight.

Caution! Wear gloves.

Warning! Steam.

Warning! Hot parts!

SERVICE INFORMATION

Please note that the following parts of this product are subject to normal or natural wear and that the following parts are therefore also required for use as consumables.

Category	Example
Wear parts*	
Consumables*	
Missing parts	

* Not necessarily included in the scope of delivery!

SPARE PARTS

Spare parts can be ordered from the Special Orders Desk at your local Bunnings Warehouse or Homebase store.

For further information, or any parts visit www.ozito-diy.co.uk or contact Ozito Customer Service: Great Britain: 0151 294 4488

Ireland: 1850 882711

E-mail: info@ozito-diy.co.uk

DECLARATION OF CONFORMITY

ISC GmbH · Eschenstraße 6 · D-94405 Landau/Isar		EU
explains the following conformity according to EU directives and norms for the following product		
Wallpaper Stripper WPS-2000U (Ozito)		
<input type="checkbox"/> 2014/29/EU <input type="checkbox"/> 2005/32/EC_2009/125/EC <input checked="" type="checkbox"/> 2014/35/EU <input type="checkbox"/> 2006/28/EC <input checked="" type="checkbox"/> 2014/30/EU <input type="checkbox"/> 2014/32/EU <input type="checkbox"/> 2014/53/EC <input type="checkbox"/> 2014/68/EU <input type="checkbox"/> EU/2016/426 Notified Body: <input type="checkbox"/> EU/2016/425 <input checked="" type="checkbox"/> 2011/65/EU	<input checked="" type="checkbox"/> 2006/42/EC <input type="checkbox"/> Annex IV Notified Body: Reg. No.: <input type="checkbox"/> 2000/14/EC_2005/88/EC <input type="checkbox"/> Annex V <input type="checkbox"/> Annex VI Noise: measured L_{WA} = dB (A); guaranteed L_{WA} = dB (A) P = KW; L/D = cm Notified Body: <input type="checkbox"/> 2012/46/EU Emission No.:	
Standard references: EN 60335-1; EN 60335-2-54; EN 62233; EN 55014-1; EN 55014-2; EN 61000-3-2; EN 61000-3-3		
Landau/Isar, den 12.04.2018 Weichselgartner/Generel-Manager	Dong Product-Management	
First CE: 17 Art.-No.: 30.002.32 Subject to change without notice	Archive-File/Record: NAPR017825 Documents registrar: Alex Kurz Wiesenerweg 22, D-94405 Landau/Isar	

WALLPAPER STRIPPER SAFETY WARNINGS

WARNING!

- Always disconnect the mains plug before doing any work on the equipment.
- Keep steam away from plug sockets.
- The steam is produced at 100 degrees Celsius, wear protective clothing and protect your hands with heat resistant gloves.
- Never detach the hose or remove the filler cap while the machine is in operation.
- Do not pull on hose too hard, move the machine around by using the handle.
- Do not stand on the machine and try to avoid stepping on the steam hose.
- Never cover or block the safety valve.
- Do not leave the machine unattended while still connected to power supply.
- Keep the tank on a flat and level surface while in operation, failure to do so could result in the machine overheating.
- Never direct steam hose or steam plate in the direction of anybody.
- Always keep steam plate tilted away from face, beware of hot droplets of water especially when stripping ceilings and high areas.
- Wait for at least 5min after disconnection before removing cap.
- Use only tap water when filling machine, never overfill.
- Never add any detergent or chemicals to water.
- Extreme care must be taken when the appliance is used in bathrooms/kitchens, beware of electrocution from stored water in baths and sinks.
- The power must be disconnected before the machine is cleaned, make sure that the power inlet is dry before reconnection.

ozito WALLPAPER STRIPPER

2000W ORIGINAL INSTRUCTIONS

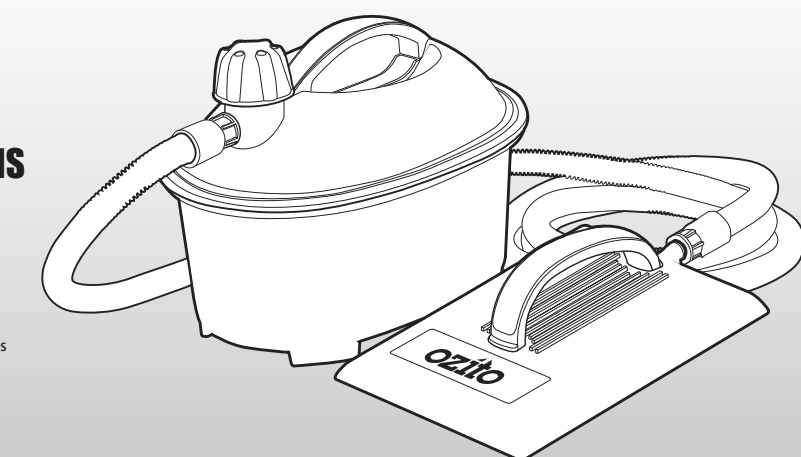
SPECIFICATIONS

Voltage:	230-240V ~ 50Hz
Power:	2000W
Container Capacity:	4.5L
Steam Up Time:	15 minutes
Run Time:	Approx. 80 minutes
Hose Length:	3m
IP Rating:	IPX4
Weight:	1.83kg

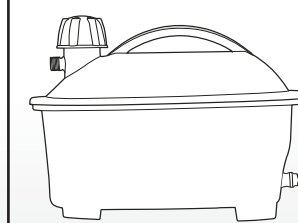
ozito-diy.co.uk



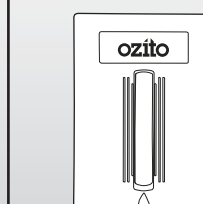
3 YEAR REPLACEMENT WARRANTY



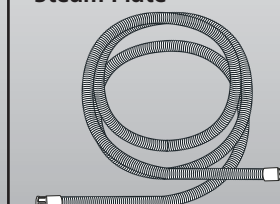
STANDARD EQUIPMENT



Water Tank



Steam Plate



Flexible Hose

WPS-2000U
Art.-No.: 30.002.32 I.-No.: 11017

WARRANTY

All of our products undergo strict quality checks to ensure that they reach you in perfect condition. In the unlikely event that your device develops a fault, please contact our service department at the address shown on this guarantee card. You can also contact us by telephone using the customer service number shown. Please note the following terms under which guarantee claims can be made:

1. These warranty terms regulate additional warranty services, which the manufacturer mentioned below promises to buyers of its new products in addition to their statutory guarantee claims are not affected by this guarantee. Our guarantee is free of charge to you.

2. The warranty services only covers defects due to material or manufacturing faults on a product which you have bought from the manufacturer mentioned below are limited to either the rectification of said defects on the product or the replacement of the product, whichever we prefer. Please note that our devices are not designed for use in commercial, trade or professional applications. A guarantee contract will not be created if the device has been used by commercial, trade or industrial business or has been exposed to similar stresses during the guarantee period.

3. The following are not covered by our guarantee:
 - Damage to the device caused by a failure to follow the assembly instructions or due to incorrect installation, a failure to follow the operating instructions (for example connecting it to an incorrect mains voltage or current type) or a failure to follow the maintenance and safety instructions or by exposing the device to abnormal environmental conditions or by lack of care and maintenance.
 - Damage to the device caused by abuse or incorrect use (for example overloading the device or the use of unapproved tools or accessories), ingress of foreign bodies into the device (such as sand, stones or dust, transport damage), the use of force or damage caused by external forces (for example by dropping it).
 - Damage to the device or parts of the device caused by normal or natural wear or tear or by normal use of the device.

4. Your Product is guaranteed for a period of 36 months from the original date of purchase and is intended for DIY (Do It Yourself) use only. Warranty excludes consumable parts. Guarantee claims should be submitted before the end of the guarantee period within two weeks of the defect being noticed. No guarantee claims will be accepted after the end of the guarantee period. The original guarantee period remains applicable to the device even if repairs are carried out or parts are replaced. In such cases, the work performed or parts fitted will not result in an extension of the guarantee period, and no new guarantee will become active for the work performed or parts fitted. This also applies if an on-site service is used.

IN ORDER TO MAKE A CLAIM UNDER THIS WARRANTY YOU MUST RETURN THE PRODUCT TO THE PLACE OF PURCHASE WITH YOUR REGISTER RECEIPT.

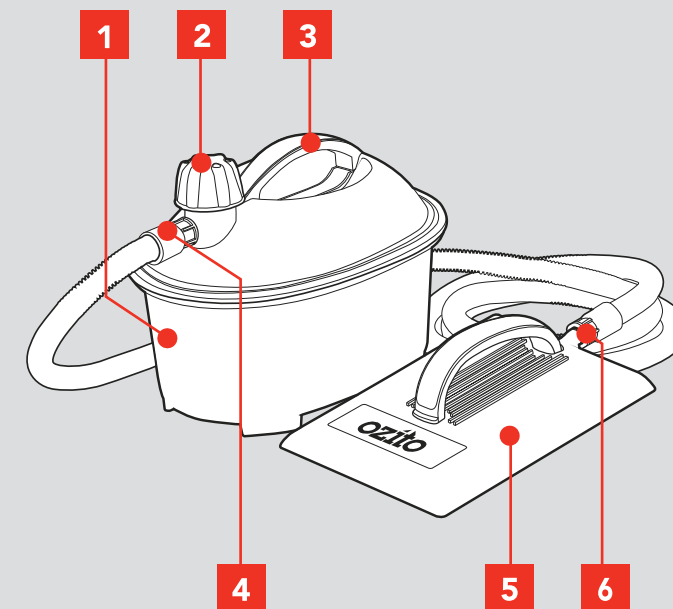
Please refer to the restrictions of this warranty concerning wearing parts, consumables and missing parts as set out in the service information in these operating instructions.

CUSTOMER SERVICE HELPLINE
GB: 0151 294 4488
IRL: 1850 882711
Ozito-diy.co.uk

KNOW YOUR PRODUCT

WALLPAPER STRIPPER

- 1 Water Container
- 2 Filler Cap
- 3 Carry Handle
- 4 Steam Outlet Fitting
- 5 Steam Plate
- 6 Flexible Hose



4

5

6

ONLINE MANUAL

Scan this QR Code with your mobile device to take you to the online manual.



SETUP & PREPARATION

1. BEFORE USE

Items Supplied

Please check that the article is complete as specified in the scope of delivery. If parts are missing, please contact our service center or the sales outlet where you made your purchase at the latest within 5 working days after purchasing the product and upon presentation of a valid bill of purchase. Also, refer to the warranty table in the service information at the end of the operating instructions.

- Open the packaging and take out the equipment with care.
- Remove the packaging material and any packaging and/or transportation braces (if available).
- Check to see if all items are supplied.
- Inspect the equipment and accessories for transport damage.
- If possible, please keep the packaging until the end of the guarantee period.

Danger!

The equipment and packaging material are not toys. Do not let children play with plastic bags, foils or small parts. There is a danger of swallowing or suffocating!

Proper Use

Suitable for steaming wallpaper for easy removal, including vinyl, textured, multi layered and artex material.

The equipment is to be used only for its prescribed purpose. Any other use is deemed to be a case of misuse. The user / operator and not the manufacturer will be liable for any damage or injuries of any kind caused as a result of this.

Please note that our equipment has not been designed for use in commercial, trade or industrial applications. Our warranty will be voided if the machine is used in commercial, trade or industrial businesses or for equivalent purposes.

Caution! Residual risks

Even if you use this electric power tool in accordance with instructions, certain residual risks cannot be ruled out. The following hazards may arise in connection with the equipment's construction and layout:

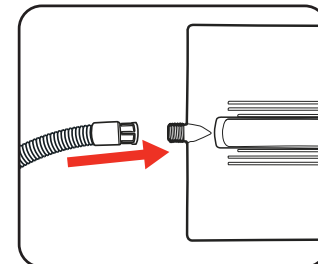
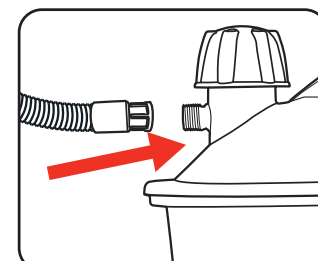
1. Lung damage if no suitable protective dust mask is used.
2. Damage to hearing if no suitable ear protection is used.
3. Health damage caused by hand-arm vibrations if the equipment is used over a prolonged period or is not properly guided and maintained.

2. ASSEMBLY AND SETUP

WARNING! ENSURE THE TOOL IS TURNED OFF AND DISCONNECTED FROM THE POWER SUPPLY BEFORE PERFORMING ANY OF THE FOLLOWING OPERATIONS.

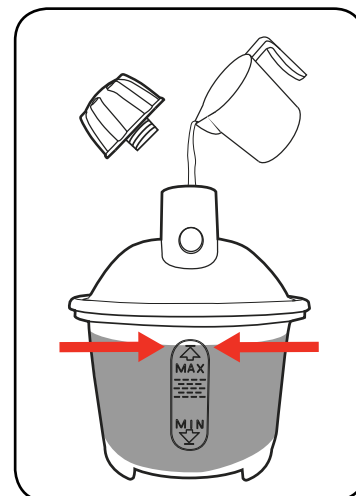
Fitting the Flexible Hose

- 1 Connect one end of the flexible hose to the container steam outlet fitting.
- 2 Connect the other end of the flexible hose to the steam plate.



Filling Up the Water Container

- 1 Remove the filler cap. Fill the water container with clean water, no higher than the MAX level. Then screw the filler cap back on tightly.



Note: It is recommended to use hot water to reduce the steam-up time.

WARNING! DO NOT OVER FILL THE WATER CONTAINER OR ALLOW THE LEVEL TO DROP BELOW THE MIN LEVEL. DO NOT USE ANY ADDITIVES OR CHEMICALS. PLEASE ENSURE THE FILLER CAP IS FULLY TIGHTENED BEFORE USING THE WALLPAPER STRIPPER.

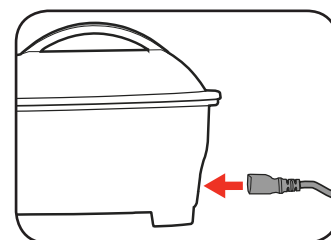
OPERATION

3. OPERATION

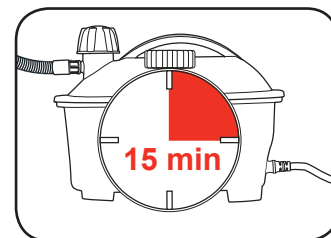
WARNING! THE POWER SUPPLY FOR THIS PRODUCT SHOULD BE PROTECTED BY A RESIDUAL CURRENT DEVICE (RATED AT 30MA OR LESS). A RESIDUAL CURRENT DEVICE REDUCES THE RISK OF ELECTRIC SHOCK.

WARNING! ENSURE ALL CONNECTIONS ARE SECURED TIGHTLY BEFORE USE.

- 1 Connect the power cord to the water container and plug into a suitable power outlet.

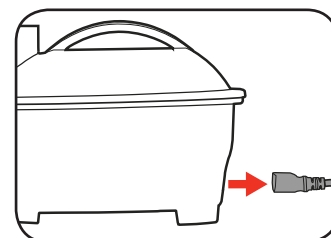


- 2 Steam should be produced after about 15 minutes, depending on the amount of water and water temperature.



NOTE: Just before steam is produced a small amount of water will bubble from the steam plate, this is normal.

- 3 After use, unplug the cord from the power supply or from the container.

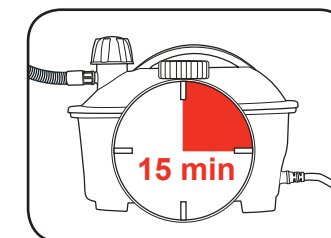


- 4 Allow the unit to cool before moving or emptying any left over water.

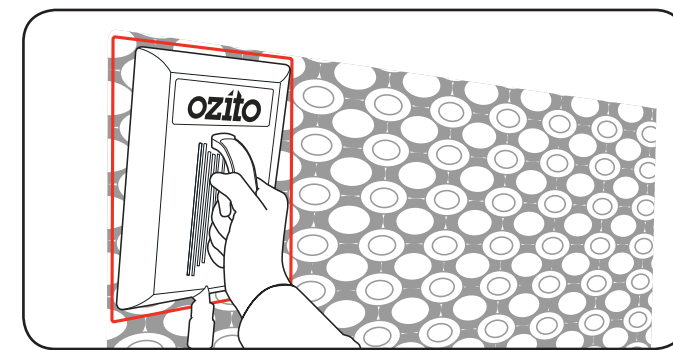
4. STRIPPING WALLPAPER

WARNING! PROTECTIVE GLOVES AND GLASSES SHOULD BE WORN AT ALL TIMES TO AVOID INJURY.

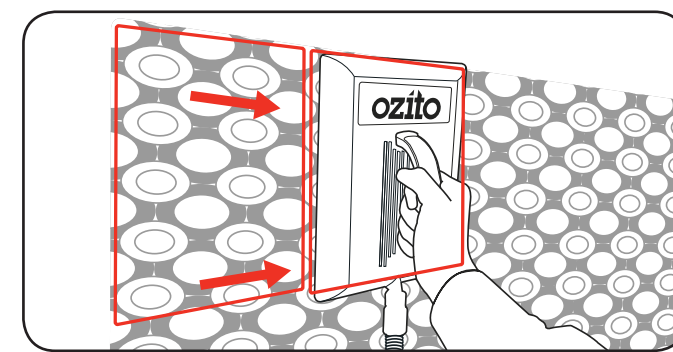
- 1 Ensure the hose is connected securely to both the water container and steam plate. Then switch the unit on and allow the unit to heat up.



- 2 Place the steam plate against the wallpaper starting from 1 edge. Hold for roughly 20 seconds and then remove from the wall.
Note: Depending on the type of wallpaper, will determine the duration that you will need to hold the steam plate against the wallpaper.

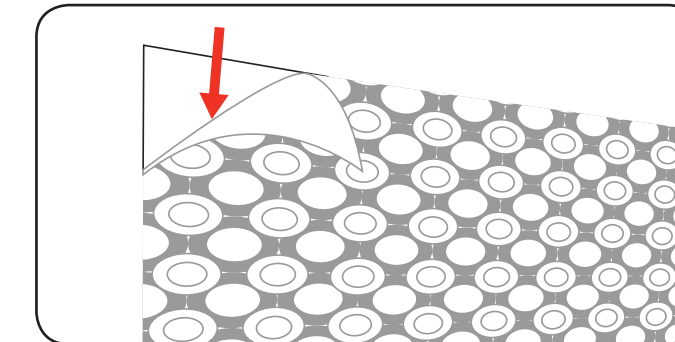


- 3 Move the steam plate to the spot immediately next to the one previously steamed.
Note: If the wallpaper was installed in strips, it is recommended that you follow the direction that it was applied to make removal easier.



- 4 The wallpaper from the first position should now easily be peeled away from the wall. The use of a scraping tool (not included) is recommended.

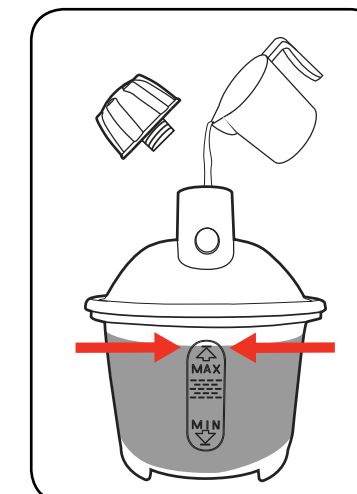
If the wallpaper is difficult to remove you may need to extend the time you hold the steam plate against the wallpaper.



- 5 Repeat this process by holding the steam plate against the wallpaper and then continuing to peel off the paper until the strip of wallpaper is removed.

Refilling the Water Container

- 1 While operating the unit, continually check that the water level does not drop below the LOW mark.
- 2 If the tank needs refilling, disconnect from the power supply and allow to cool down for 5 minutes.
- 3 Remove the filler cap (BEWARE OF STEAM) and refill the container with water up to the MAX mark and then reattach the filler cap tightly.



WARNING! DO NOT OVER FILL THE WATER CONTAINER OR ALLOW THE LEVEL TO DROP BELOW THE MIN LEVEL. DO NOT USE ANY ADDITIVES OR CHEMICALS. PLEASE ENSURE THE FILLER CAP IS FULLY TIGHTENED BEFORE USING THE WALLPAPER STRIPPER.

5. OPERATION TIPS

Helpful Tips

- Use this machine on level ground only.
- Heavy duty paper (paper that has been gloss painted and vinyl paper) might require scoring to allow steam to penetrate into the paper.
- Operate steamer until water level is low then unplugging the machine and allow the tank to cool for at least 5 minutes before removing the filler cap - **BEWARE OF STEAM** - and refill the tank.
- When finished with the steamer allow the machine to cool before emptying the tank, and always store the machine empty.

WARNING! UNPLUG THE UNIT AND WAIT FOR AT LEAST 5 MINUTES BEFORE REMOVING THE HOSE OR CHANGING TOOLS.

Safety Cut Out

A safety cut out is fitted to prevent the element from overheating if the water level becomes too low. If the tank stops boiling during use this may be the cause. Turn the machine off and wait for five minutes before removing the filler cap, then refill with clean water. The cut-out will reset itself in 15 minutes of cooling and steam will be produced again.

Use this machine on level ground only. The cut-out will not protect the element if the tank is tilted during use, which will damage the cut-out device permanently and make it unable to reset and produce steam again.

Pressure Relief Valve

The unit is fitted with a pressure relief valve for your protection. If the valve operates steam will escape from the cover, disconnect power immediately and allow to cool. Check hose for blockages. Allow the valve to reset (approx. 10 minutes) and resume work.