



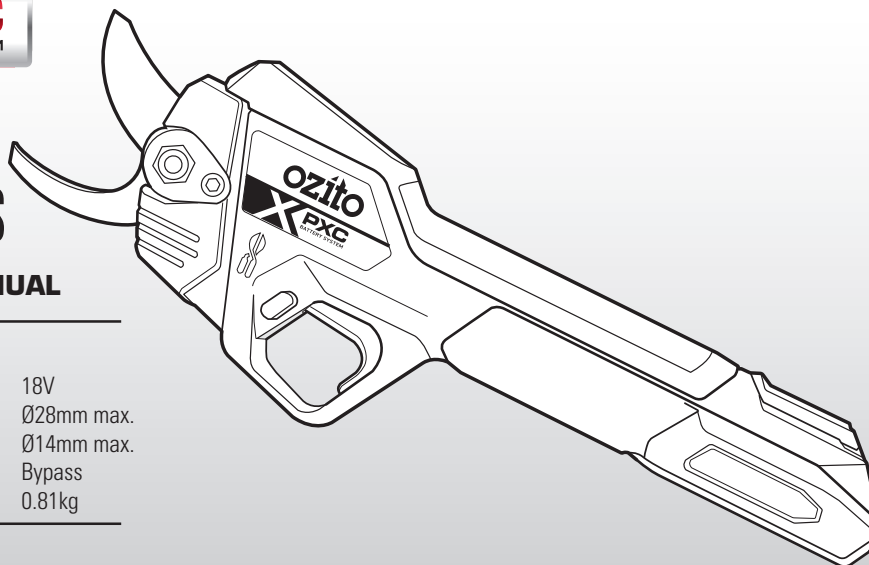
# PRUNING SECATEURS

## INSTRUCTION MANUAL

### SPECIFICATIONS

Input:	18V
Cutting Capacity (softwood):	Ø28mm max.
Cutting Capacity (hardwood):	Ø14mm max.
Cutting System:	Bypass
Tool Weight:	0.81kg

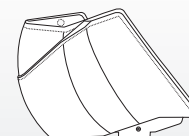
[ozito.com.au](http://ozito.com.au)



### STANDARD EQUIPMENT



Brushless Pruning Secateurs



Blade Cover

**5 YEAR**  
REPLACEMENT WARRANTY

**PXBPS-1828**

## WARRANTY

IN ORDER TO MAKE A CLAIM UNDER THIS WARRANTY YOU MUST RETURN THE PRODUCT TO YOUR NEAREST BUNNINGS WAREHOUSE WITH YOUR BUNNINGS REGISTER RECEIPT. PRIOR TO RETURNING YOUR PRODUCT FOR WARRANTY PLEASE TELEPHONE OUR CUSTOMER SERVICE HELPLINE:

**Australia 1800 069 486**

**New Zealand 0508 069 486**

TO ENSURE A SPEEDY RESPONSE PLEASE HAVE THE MODEL NUMBER AND DATE OF PURCHASE AVAILABLE. A CUSTOMER SERVICE REPRESENTATIVE WILL TAKE YOUR CALL AND ANSWER ANY QUESTIONS YOU MAY HAVE RELATING TO THE WARRANTY POLICY OR PROCEDURE.

### WARNING

**The following actions will result in the warranty being void.**

- If the tool has been operated on a supply voltage other than that specified on the tool.
- If the tool shows signs of damage or defects caused by or resulting from abuse, accidents or alterations.
- Failure to perform maintenance as set out within the instruction manual.
- If the tool is disassembled or tampered with in any way.
- Professional, industrial or high frequency use.

The benefits provided under this warranty are in addition to other rights and remedies which are available to you at law.

Our goods come with guarantees that cannot be excluded at law. You are entitled to a replacement or refund for a major failure and for compensation for any other reasonably foreseeable loss or damage. You are also entitled to have the goods repaired or replaced if the goods fail to be of acceptable quality and the failure does not amount to a major failure.

Generally you will be responsible for all costs associated with a claim under this warranty, however, where you have suffered any additional direct loss as a result of a defective product you may be able to claim such expenses by contacting our customer service helpline above.

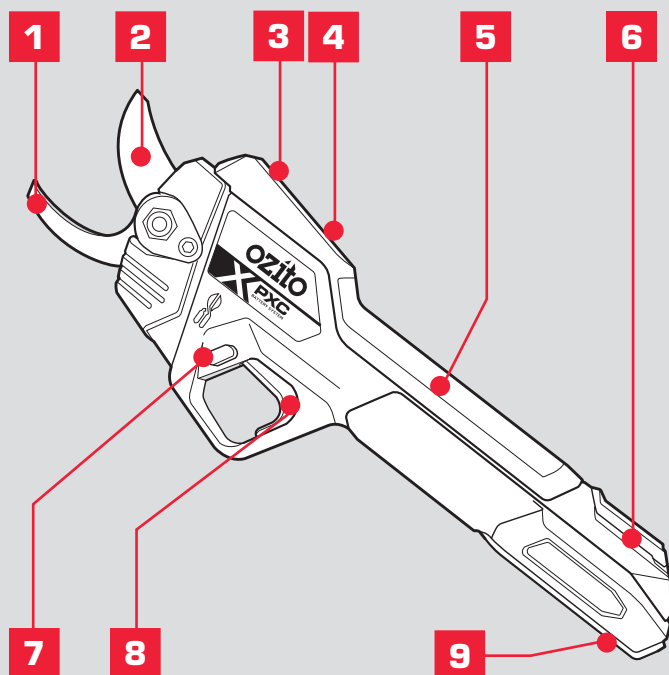
### 5 YEAR REPLACEMENT WARRANTY

Your Product is guaranteed for a period of 60 months from the original date of purchase and is intended for DIY (Do It Yourself) use only. If a product is defective it will be replaced in accordance with the terms of this warranty. **Lithium Ion batteries and chargers are covered by a 36 month warranty** and are excluded from the warranty extension. Blade, blade cover

# KNOW YOUR PRODUCT

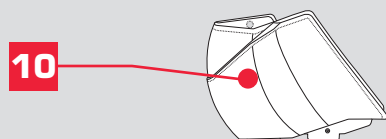
## PRUNING SECATEURS

1. Fixed Blade
2. Cutting Blade
3. LED's
4. On/Off Button
5. Sure Grip Handle
6. Belt Clip
7. Trigger Lock
8. Trigger
9. Battery Seating



## ACCESSORIES

10. Blade Cover



## BATTERY & CHARGER

This tool is compatible with all battery and chargers from the Ozito PXC Range.

## ONLINE MANUAL

Scan this QR Code with your mobile device to take you to the online manual.



**5 YEAR**  
REPLACEMENT WARRANTY

# SETUP & PREPARATION

## 1. BLADE COVER



**WARNING!** ENSURE THE APPLIANCE IS SWITCHED OFF AND BATTERY DISCONNECTED BEFORE PERFORMING ANY OF THE FOLLOWING TASKS.



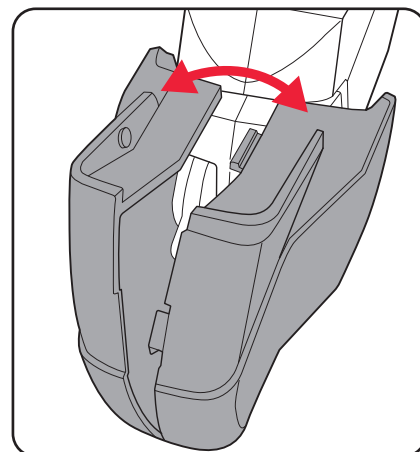
**WARNING!** WHEN HANDLING THE BLADE, WEAR NON-SLIP, HEAVY-DUTY PROTECTIVE GLOVES. DO NOT PLACE YOUR HAND OR FINGERS BETWEEN BLADES OR IN ANY POSITION WHERE THEY COULD GET CUT. NEVER TOUCH BLADES OR SERVICE THE UNIT WITH THE BATTERY INSTALLED.



**WARNING!** WHEN TRANSPORTING THE PRUNING SECATEURS FROM ONE LOCATION TO ANOTHER, ALWAYS CARRY USING THE SURE GRIP HANDLE ONLY. NEVER CARRY HOLDING THE BLADE AS IT IS VERY SHARP AND WILL CUT YOU.

## Remove Blade Cover

1. Use a pair of scissors or side-cutters (not included) to remove the cable-tie from the blade cover.
2. Remove the blade cover by unfolding it.



## Belt Clip

If the belt clip is to be used, ensure the cutting blade is in the closed position, the blade cover is assembled and the trigger in the lock position.



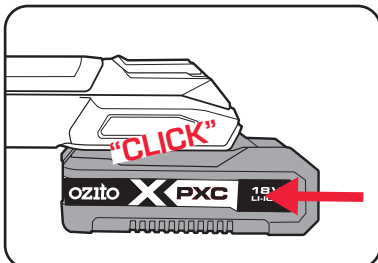
**WARNING!** FAILURE TO FOLLOW BELT CLIP INSTRUCTIONS MAY RESULT IN INJURY.

# OPERATION

## 2. INSERTING & REMOVING THE BATTERY

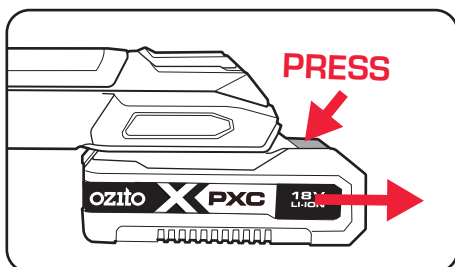
### Installing the Battery

Slide the battery into the recess in the rear of the pruning shears and push in until it clicks into place.



### Removing the Battery

Press and hold the battery release tab and then slide the battery out.



## 3. CONTROLS & OPERATION

### Before Using the Pruning Secateurs

- Remove the blade cover.
- Wear protective gloves and eye protection while working with the pruning secateurs.



**WARNING!** THIS PRUNING SECATEURS ARE DESIGNED FOR PRUNING PLANTS AND TREES WITHIN THE SPECIFIED CUTTING CAPACITIES. DO NOT USE THIS PRODUCT TO CUT ANY MATERIAL UNSPECIFIED BY THE MANUFACTURER.

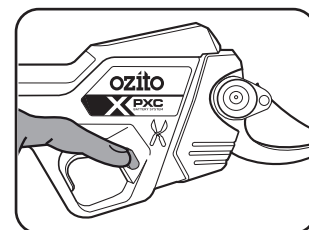
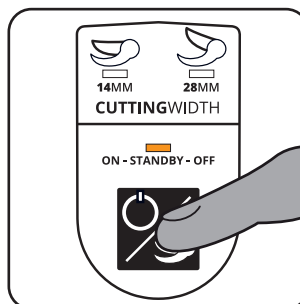


**WARNING!** NEVER TOUCH THE BLADE WHILE THE TOOL IS IN OPERATION AND BE AWARE OF THE SHARP EDGES EVEN WHEN THE PRUNING SHEARS IS NOT IN USE.

### Start Up

#### • Step One - Standby Mode

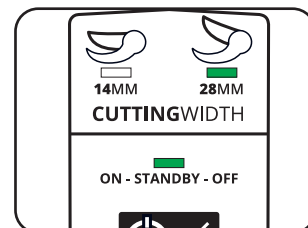
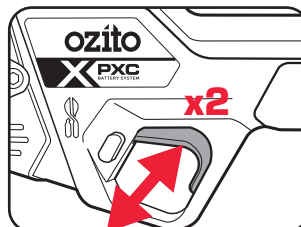
1. Press and hold the On/Off Button until the Orange LED illuminates and a audible beep sounds.
2. If the pruning secateurs trigger is locked, slide the trigger lock into the housing on the right - Unlock position.



**Note:** The blade will be in the closed position.

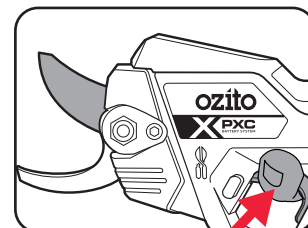
#### • Step Two - Active Mode

1. Double press the trigger rapidly. The Ø28mm cutting width Green LED illuminates and a audible beep sounds twice. This is the default cutting width setting.



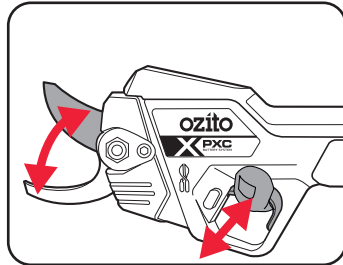
2. Single press of the trigger will open the blade.

**Note:** After 30 seconds of non use the Orange LED will illuminate, two beeps will sound and the pruner will return to standby mode. Double press the trigger rapidly again for Active Mode.



### • Step Three - Making a Cut

1. With the pruner in Active Mode, press and hold the trigger to make a cut.
2. Release the trigger to open the blade in preparation to make another cut.

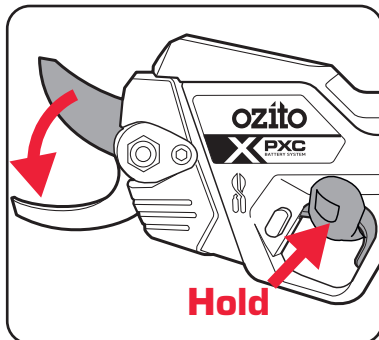


**Note:** After 30 seconds of non use the Orange LED will illuminate, two beeps will sound and the pruner will be in standby mode. Double press the trigger rapidly again for Active Mode.

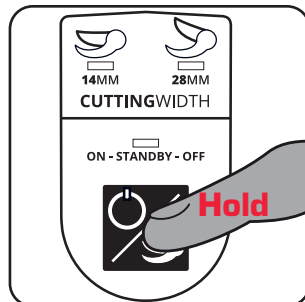
### Turning Off

1. In Active Mode, to close the blade, press and hold the trigger (approx. 5 seconds) until the LED illuminates Orange - Standby Mode.

**Note:** To prevent unintentional trigger activation the trigger can be locked. To do so, press and hold the trigger then slide the trigger lock into the housing on the left - Lock position - the pruning secateurs trigger will be locked.



2. Press and hold the On/Off Button until the Orange LED goes off and a audible beep sounds confirming the action. No LEDs will be illuminated.

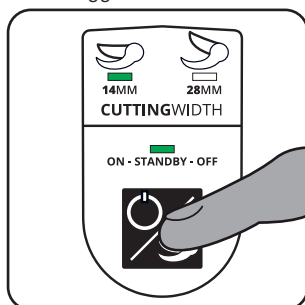


### Rapid Cuts - Blade Half Open

When in Active Mode the blade can be set half open for rapid cuts of material up to Ø14mm. After each press of the trigger the blade will return to the cutting width selected.

1. Short press the On/Off Button, the LED for 14mm cutting width illuminates Green.

**Note:** Each press of the On/Off Button will alternate between the two cutting widths.



## 4. MODES & PRUNING TIPS

### Modes Explained

#### • Standby Mode

The pruner is in standby mode when the Standby LED is illuminated Orange. The blade may be either in the open or closed position. After 8 minutes of non use the Orange LED goes off and a audible beep sounds.

#### • Active Mode

Two Green LEDs are illuminated and the pruner is ready to make a cut. After 30 seconds of non use the Orange LED will illuminate, two beeps will sound and the pruner will be in standby mode again. Double press the trigger rapidly again for Active Mode to continue normal operation.

**Note:** If trigger is depressed with the cutting blade closed for 4 seconds or more the pruner will move into standby mode. Double press the trigger rapidly again for active mode

### Pruning Tips

Pruning can be done all year round. It is advisable to prune lightly when the shrub/plant is in full bloom or in its peak. Prune more heavily when the plant is less active and dormant. Do not use the pruner for cutting stems greater than Ø28mm. Take note of the maximum cutting capacity, softwood: Ø28mm, hardwood: Ø14mm.



**Note:** If you try to cut branches that are too thick or too hard for the pruner to cut through, the cutting blade will open automatically.

Regular tip pruning of new growth should be carried out when plants or shrubs are at a young age ideally seedlings or rooted cutting stage.

For better results tip pruning is best after flowering and during the season. If you prune too late in the season this affects and reduces your bloom.

Tip pruning increases your flowers and creates bushier plants.

#### • Screens & Hedges

Light pruning is recommended for all screens and hedge plants. Pruning on a regular basis promotes and maintains dense growth.

#### • Pruning to Encourage Flowering

After flowers have had their full bloom it is then recommended to prune to promote more flowers next season. All dead flowers should be removed as they drain the plant. This could potentially prevent the plant from going to seed.

#### • Pruning to Decrease Rapid Growth

To minimise new growth on shrubs and plants cut flush with the stem of the shrub/tree. This also helps if you want to create a topiary look and train your plant or shrub.

#### • Pruning to Repair Damage

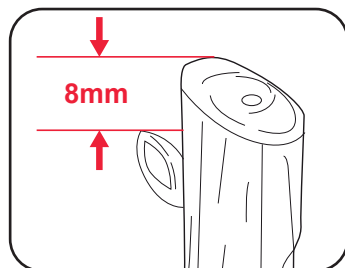
If severe weather conditions have damaged your plants or shrub, it is in the plants best interests to be pruned to help recover its condition.

If any insects have infected your plants/shrubs, prune back the affected areas to assist with new growth.

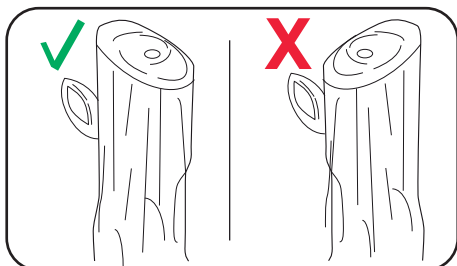
## OPERATION (cont.)

### • General Pruning

For best results always make the cut above 8mm from the bud. This allows the wound to heal properly.

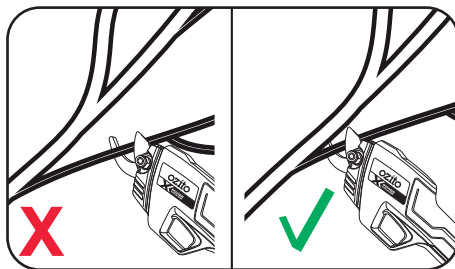


When removing unwanted growth ensure you make clean cuts that are angled away from the buds.



Prune parallel to existing branches and leaf nodes to encourage new growth.

When removing the entire stem, cut back to the point where it branched.



Each plant is different, slow growing plants will require only light pruning, fast growing plants will require more frequent pruning to keep them healthy.

Ensure you prune all parts of the plant at the same time as this ensures that there is an even and consistent growth.

## MAINTENANCE



**WARNING!** ENSURE THE APPLIANCE IS SWITCHED OFF AND BATTERY DISCONNECTED PRIOR TO ANY MAINTENANCE.



**WARNING!** DO NOT HANDLE BLADES WITHOUT GLOVES AS THEY ARE SHARP AND CAN BECOME HOT AFTER USE, POTENTIALLY CAUSING PERSONAL INJURY.

### Cleaning

- After each use it is recommended you disinfect the blades by using methylated spirits. This helps prevent the spread of disease to other plants and shrubs the next time you are pruning.
- Do not use cleaning agents to clean the plastic parts of the tool. A mild detergent on a damp cloth is recommended. Water must never come into contact with the tool.
- Ensure the blade is dry after use by wiping any residue off with a cloth.
- Keep handles dry, clean and free of oil and grease.

## MAINTENANCE (cont.)

### Storage

- Always remove the battery and place the blade cover on the closed blade before storing the pruning secateurs. Use caution to avoid the sharp edge of the blade.
- Store the equipment and its accessories in a dark and dry place at above freezing temperature, out of children's reach. The ideal storage temperature is between 5°C and 30°C.



**WARNING!** STORE THE PRUNING SECATEURS IN A SAFE AND DRY PLACE OUT OF THE REACH OF CHILDREN.

**Note:** Ozito will not be responsible for any damage or injuries caused by the repair of the pruning secateurs by an unauthorised person or by mishandling of the pruning secateurs. This tool is designed for DIY use - use in commercial or industrial environments will void the warranty.

## DESCRIPTION OF SYMBOLS

<b>V</b>	Volts	<b>Hz</b>	Hertz
<b>~</b>	Alternating current	<b>W</b>	Watts
<b>dc/—</b>	Direct current	<b>Ø</b>	Diameter
	Wear eye protection	<b>Ah</b>	Amp hour
	Warning		Regulator compliance mark (RCM)
	Read instruction manual		
	<b>Danger!</b> Moving blade. Keep body parts away from blade.		

## CARING FOR THE ENVIRONMENT



Power tools that are no longer usable should not be disposed of with household waste but in an environmentally friendly way. Please recycle where facilities exist. Check with your local council authority for recycling advice.



Recycling packaging reduces the need for landfill and raw materials. Reuse of recycled material decreases pollution in the environment. Please recycle packaging where facilities exist. Check with your local council authority for recycling advice.

## SPARE PARTS

Spare parts can be ordered from the Special Orders Desk at your local Bunnings Warehouse.

For further information, visit [www.ozito.com.au](http://www.ozito.com.au) or contact

**Ozito Customer Service:**

**Australia 1800 069 486**

**New Zealand 0508 069 486**

**E-mail: [hello@ozito.com.au](mailto:hello@ozito.com.au)**



# ELECTRICAL SAFETY



**WARNING!** When using electric machines, basic safety precautions, including the following, should always be followed to reduce risk of fire, electric shock, personal injury and material damage.

Read the whole manual carefully and make sure you know how to switch the machine off in an emergency, before operating the machine.

Save these instructions and other documents supplied with this machine for future reference.

- This appliance is not intended for use by persons (including children) with reduced physical, sensory or mental capabilities, or lack of experience and knowledge, unless they have been given supervision or instruction concerning use of the appliance by a person responsible for their safety. Children should be supervised to ensure that they do not play with the appliance.

- This appliance is compatible and only to be used with all batteries & chargers from the Ozito PXC range. Refer to the PXC battery and charger manuals for information regarding charging, use and storage.

-Remove the batteries from the appliance before being charged.

-when the appliance is left unattended,

-when the appliance is being checked, cleaned, or having maintenance work done,

-Do not combine different types of batteries or new and used batteries.

-If the appliance is to be stored unused for a long period, the batteries should be removed.

-Do not use modified or damaged batteries.



# GENERAL POWER TOOL SAFETY WARNINGS



**WARNING!** Read all safety warnings, instructions, illustrations and specifications provided with this machine. Failure to follow all instructions listed below may result in electric shock, fire and/or serious injury.

**Save all warnings and instructions for future reference.**

The term "machine" in the warnings refers to your mains-operated (corded) machine or battery-operated (cordless) machine.

## 1) Work area safety

- Keep work area clean and well lit.** Cluttered or dark areas invite accidents.
- Do not operate machines in explosive atmospheres, such as in the presence of flammable liquids, gases or dust.** Machines create sparks which may ignite the dust or fumes.

- Keep children and bystanders away while operating a machine.** Distractions can cause you to lose control.

## 2) Electrical safety

- Machine plugs must match the outlet. Never modify the plug in any way. Do not use any adapter plugs with earthed (grounded) machines.** Unmodified plugs and matching outlets will reduce risk of electric shock.
- Avoid body contact with earthed or grounded surfaces, such as pipes, radiators, ranges and refrigerators.** There is an increased risk of electric shock if your body is earthed or grounded.
- Do not expose machines to rain or wet conditions.** Water entering a machine will increase the risk of electric shock.
- Do not abuse the cord. Never use the cord for carrying, pulling or unplugging the machine. Keep cord away from heat, oil, sharp edges or moving parts.** Damaged or entangled cords increase the risk of electric shock.
- When operating a machine outdoors, use an extension cord suitable for outdoor use.** Use of a cord suitable for outdoor use reduces the risk of electric shock.
- If operating a power tool in a damp location is unavoidable, use a residual current device (RCD) protected supply.** Use of an RCD reduces the risk of electric shock.

## 3) Personal safety

- Stay alert, watch what you are doing and use common sense when operating a machine. Do not use a machine while you are tired or under the influence of drugs, alcohol or medication.** A moment of inattention while operating machines may result in serious personal injury.
- Use personal protective equipment. Always wear eye protection.** Protective equipment such as a dust mask, non-skid safety shoes, hard hat or hearing protection used for appropriate conditions will reduce personal injuries.
- Prevent unintentional starting. Ensure the switch is in the off-position before connecting to power source and/or battery pack, picking up or carrying the machine.** Carrying machines with your finger on the switch or energising machines that have the switch on invites accidents.
- Remove any adjusting key or wrench before turning the machine on.** A wrench or a key left attached to a rotating part of the machine may result in personal injury.
- Do not overreach. Keep proper footing and balance at all times.** This enables better control of the machine in unexpected situations.
- Dress properly. Do not wear loose clothing or jewellery. Keep your hair and clothing away from moving parts.** Loose clothes, jewellery or long hair can be caught in moving parts.
- If devices are provided for the connection of dust extraction and collection facilities, ensure these are connected and properly used.** Use of dust collection can reduce dust-related hazards.
- Do not let familiarity gained from frequent use of machines allow you to become complacent and ignore machine safety principles.** A careless action can cause severe injury within a fraction of a second.

## 4) Machine use and care

- Do not force the machine. Use the correct machine for your application.** The correct machine will do the job better and safer at the rate for which it was designed.
- Do not use the machine if the switch does not turn it on and off.** Any machine that cannot be controlled with the switch is dangerous and must be repaired.
- Disconnect the plug from the power source and/or remove the battery pack, if detachable, from the machine before making any adjustments, changing accessories, or storing machines.** Such preventive safety measures reduce the risk of starting the machine accidentally.
- Store idle machines out of the reach of children and do not allow persons unfamiliar with the machine or these instructions to operate the machine.** Machines are dangerous in the hands of untrained users.
- Maintain machines and accessories. Check for misalignment or binding of moving parts, breakage of parts and any other condition that may affect the machine's operation. If damaged, have the machine repaired before use.** Many accidents are caused by poorly maintained machines.
- Keep cutting machines sharp and clean.** Properly maintained cutting machines with sharp cutting edges are less likely to bind and are easier to control.
- Use the machine, accessories and machine bits etc. in accordance with these instructions, taking into account the working conditions and the work to be performed.** Use of the machine for operations different from those intended could result in a hazardous situation.
- Keep handles and grasping surfaces dry, clean and free from oil and grease.** Slippery handles and grasping surfaces do not allow for safe handling and control of the machine in unexpected situations.

## 5) Battery machine use and care

- Recharge only with the charger specified by the manufacturer.** A charger that is suitable for one type of battery pack may create a risk of fire when used with another battery pack.
  - Use machines only with specifically designated battery packs.** Use of any other battery packs may create a risk of injury and fire.
  - When battery pack is not in use, keep it away from other metal objects, like paper clips, coins, keys, nails, screws or other small metal objects, that can make a connection from one terminal to another.** Shorting the battery terminals together may cause burns or a fire.
  - Under abusive conditions, liquid may be ejected from the battery; avoid contact. If contact accidentally occurs, flush with water. If liquid contacts eyes, additionally seek medical help.** Liquid ejected from the battery may cause irritation or burns.
  - Do not use a battery pack or machine that is damaged or modified.** Damaged or modified batteries may exhibit unpredictable behaviour resulting in fire, explosion or risk of injury.
  - Do not expose a battery pack or machine to fire or excessive temperature.** Exposure to fire or temperature above 130 °C may cause explosion.
  - Follow all charging instructions and do not charge the battery pack or machine outside the temperature range specified in the instructions.** Charging improperly or at temperatures outside the specified range may damage the battery and increase the risk of fire.
- ## 6) Service
- Have your machine serviced by a qualified repair person using only identical replacement parts.** This will ensure that the safety of the machine is maintained.
  - Never service damaged battery packs.** Service of battery packs should only be performed by the manufacturer or authorized service providers.



# PRUNING SECATEURS SAFETY WARNINGS



**WARNING!** This appliance is not intended for use by persons (including children) with reduced physical, sensory or mental capabilities, or lack of experience and knowledge, unless they have been given supervision or instruction concerning use of the appliance by a person responsible for their safety.

**Young children should be supervised to ensure that they do not play with the appliance.**

- **Keep all parts of the body away from the cutting blade.** Do not remove cut material or hold material to be cut when blades are moving. Make sure the switch is off when clearing jammed material. A moment of inattention while operating the pruning shears may result in serious personal injury.

- **Carry the pruner by the handle with the cutting blade closed.** When transporting or storing the pruner always fit the blade cover. Proper handling of the pruner will reduce possible personal injury from the cutting blades.

- **Hold the power tool by insulated gripping surfaces only, do not perform any cutting operation where the cutting blade may contact any electronics or wiring.** Cutting blades contacting a "live" wire may make exposed metal parts of the power tool "live" and could give the operator an electric shock.

- **Perform visual inspection on the plant being pruned.** Ensure no wire fences or foreign objects come in contact with the cutting blade.

- Never allow children or people unfamiliar with these instructions to use the pruning shear.

- Avoid using the pruning shear, while people, especially children or pets, are nearby.

- Use the pruning shear only in daylight or good artificial light.

- Never operate the pruning shear with damaged blades in place.

- Switch on the pruning shear only when the hands and feet are away from the cutting blades.

- Use only the manufacturer's recommended replacement parts and accessories.

- Inspect and maintain the pruning shears regularly. Have the pruning shear repaired only by an authorized repairer.

- When not in use, store the pruning shear out of the reach of children with the battery detached.
- Face the cutting blades away from yourself, other people and animals while the power is connected to the pruner (especially during operation).
- Keep ventilation openings clear of debris. Keep handles dry, clean and free of oil and grease.
- Do not expose tool to rain, wet or moist environments.

- This Pruning Shear is designed for pruning plants and trees within the specified cutting capacities. Do not use this product to cut any material unspecified by the manufacturer.

- Always use the blade cover when the pruning shear is not in use.

- Avoid using power tools and machines for long periods of time without breaks. Vibration from tools and machines can be transmitted into your hands and arms.



**WARNING!** When servicing, use only identical replacement parts. Use of any other parts may create a hazard or cause product damage. To ensure safety and reliability, all repairs should be performed by a qualified service technician.



**Danger!** Always remove the battery from the pruner:

- when the equipment is left unattended,
- when the equipment is being checked, cleaned, or having maintenance work done,
- after striking a foreign object. Inspect the appliance for damage and make repairs as necessary.
- before clearing a blockage,
- or if the equipment vibrates abnormally.