

Quick Start Guide

Your Safety is most important. Please read these safety rules before you use this machine

General Safety Rules



Read the user manual before using the machine



On all Jobs performed with the saw you must always wear safety goggles to guard your eyes from flying materials/objects and a sound-proof helmet, ear plugs or the like to protect your hearing. Wear a safety helmet if there is a risk of objects falling on you from above.



Wear gloves to protect your hands



Wear safety shoes to protect your feet



Protect yourself from saw kickback. Hold the chain saw securely with both hands during use.



Make sure that the chain brake is released. Pull back the handle/chain brake before operating.



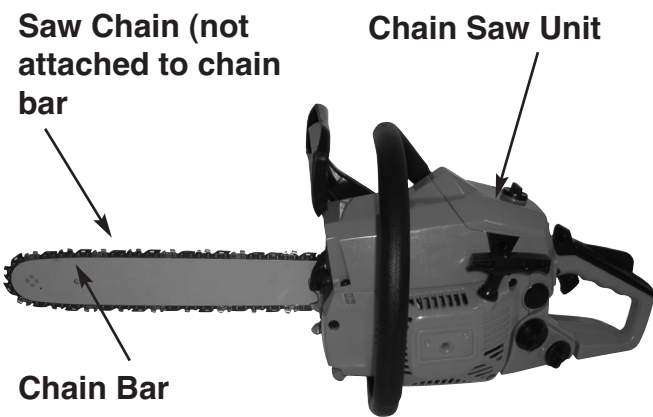
Noise emission complies with Directive 2000/14/EC!



Warning! Danger!

Note - This quick start guide is intended for experienced users who have already assembled the tool, please refer to the manual for further details

Quick Start Guide



Items Included



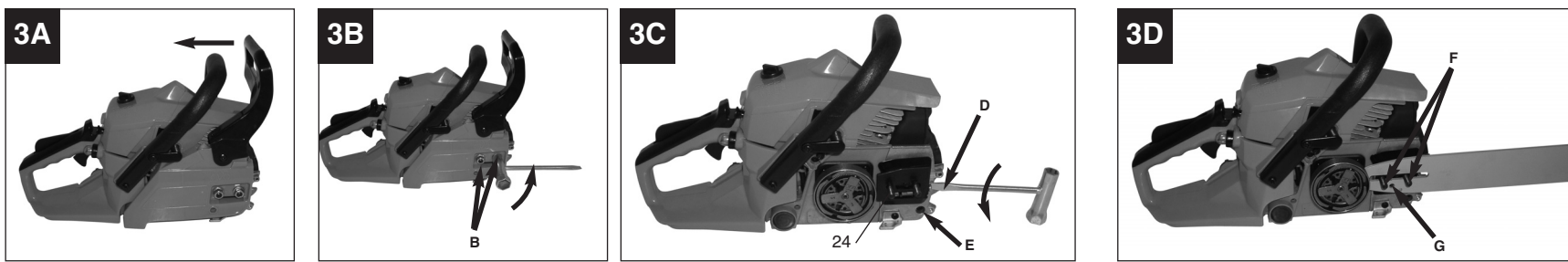
Do you have questions?
We can help
Call Customer Service
Mon-Thur 08:45 am - 5:00 pm
Friday 08:45 am - 3:15 pm



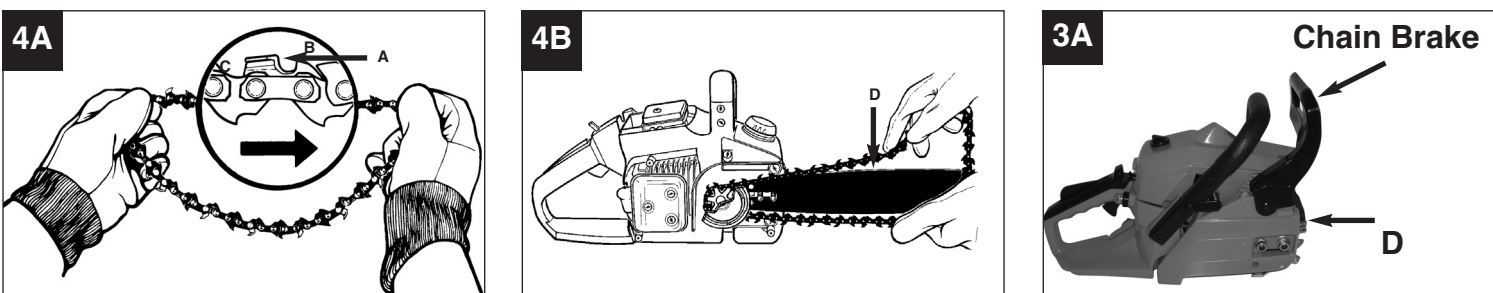
0151 649 1500
Spare Parts also available

- 1** **Unpack the Chainsaw**
 - a) Open carton carefully and remove all parts
 - b) Ensure you have all items (see above) before you discard the packaging

- 2** **Guide Bar installation**
 - a) Make sure the chain lever is pulled back into the designated Position (a firm click should be felt and heard when in position) (Fig. 3a)
 - b) Remove the 2 fastening nuts (B) (Fig. 3b) then ease off the chain cover including the chain brake handle (C) (Fig. 3b)
 - c) Before attempting to fit the chain bar ensure the transit packaging item 24 is removed (Fig. 3c)
 - d) Using a screwdriver, turn the adjustment screw (D) anti clockwise until the TANG (E) (projecting prong) is to the end of its travel towards the clutch drum and the sprocket (Fig. 3c)
 - e) Place the slotted end of the guide bar over the bar bolts (F) Position the bar so the adjustment TANG (projecting prong) fits into the lower Hole (G) on the guide BAR (Fig. 3d).

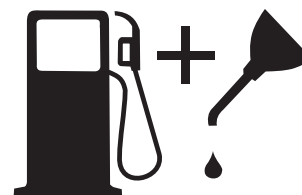


- 3** **Installing the saw Chain**
 - a) Spread chain out in a loop with cutting edges (A) Pointing CLOCKWISE around the loop
 - b) Slip the chain around the sprocket (B) behind the clutch (C), make sure the links fit between the sprocket teeth (Fig. 4b)
 - c) Guide the drive links into the groove and around the edge of the bar (Fig. 4b)
 - d) Pull the chain bar forward until the chain is closely seated, checking that the TANG (Projecting prong is still located in position).
 - e) Install the chain cover & Install the 2 nuts tightly
 - f) Before you start to use the saw you must Tension the chain by adjusting the tension screw D clockwise until the chain fits snugly all the way around, but can still be moved easily. The should be bar 2 mm to 3 mm of play between the chain bar and the chain.



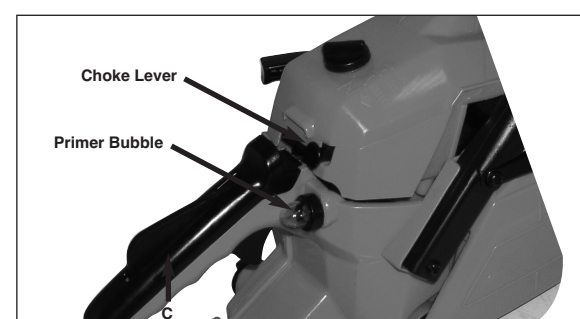
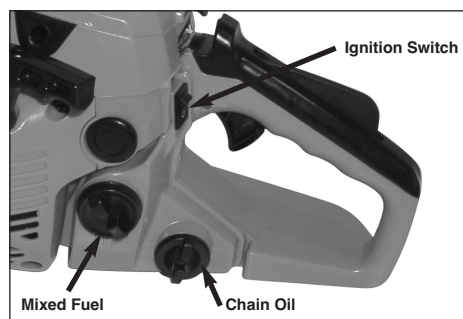
- 4** **Fuel / Lubrication**
 - a) Mix the fuel in the mixer bottle provided
 - b) Shake the container gently to ensure that it is properly mixed.

N.B Failure to use the correct oil/fuel mixture will cause the engine to seize



Use regular grade unleaded petrol and quality 2 stroke oil
Fuel Mixture is 50:1 (50 parts Fuel to 1 part 2 stroke oil)

- 5** **Starting the Chainsaw**
 - a) Add the fuel & Chain oil to the saw
 - b) Switch Ignition to "I" (on)
 - c) Take Brake off by pushing the lever back
 - d) Pull choke fully out until it locks
 - e) Push primer bubble 10 times
 - f) Pull starter cord rapidly 4 or 5 times
 - NOTE: amount of choke will vary slightly Depending on the external temperature**
 - g) Allow engine to warm up at half throttle for a short time and then push the choke in fully



THE CHAINSAW WILL NOT START IF THE EMERGENCY STOP HANDLE IS PUSHED FORWARD