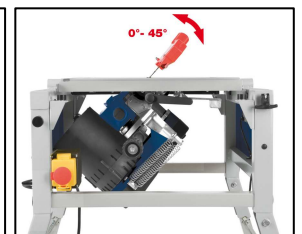
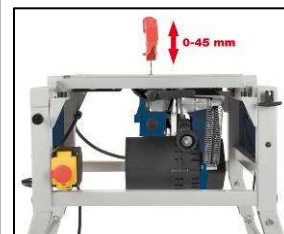
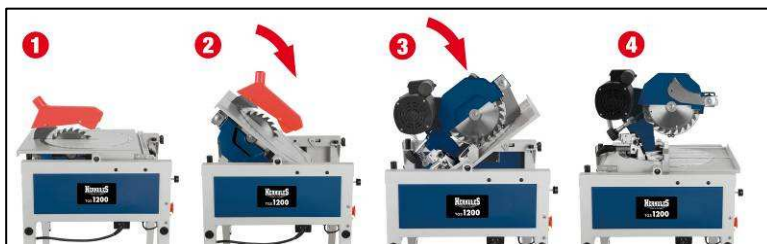


# HERKULES®

This compact bench, crosscut and mitre saw is an extremely practical multi-functional machine. It can be used as both a fully fledged crosscut saw and a bench circular saw and can be converted from one to the other with just a few moves.



**Electromechanical Exhaust Brake**



## TGS 1200 Bench, Crosscut and Mitre Saw

### Logistic Information:

<b>Type:</b>	<b>TGS 1200</b>	<b>Sales unit:</b>	1 pc
<b>Art.-No.:</b>	43.072.01	<b>20`:</b>	180 pcs
<b>Ident-No.:</b>	01017	<b>40`:</b>	380 pcs
<b>Bar Code:</b>	4006825 539127	<b>40` HC:</b>	455 pcs
<b>Packaging:</b>	622 x 566 x 440 mm	<b>Weight:</b>	37 kgs (gross)



Saw blade can be set from 0° to 45°

Parallel stop with 2 stop heights

Saw head can be tilted infinitely from 0° to 45°

Turntable can be turned from -45° to +45°

Folding base frame

Cutting height variable from 0 to 45 mm

Height adjustable stand

On-/Off switch with emergency stop and electromechanical exhaust brake

## Features:

- Outstanding sawing capacity due to high speed and carbide-coated saw blade
- Cross stop can be swiveled from -30° to +30°
- Parallel stop with 2 stop heights
- Complete with folding base frame
- Connection for dust extractor Ø 36 mm

### Crosscut / mitre saw mode

- Turntable can be turned from -45° to +45°
- Can be used for double miter cuts
- Saw head can be tilted infinitely from 0° to 45°

### Bench circular saw mode

- Saw blade can be set from 0° to 45°
- Cutting height variable from 0 to 45 mm

## Technical Data:

- Mains: 230 V ~ 50 Hz
- Power: 1,200 watts S6 40%
- Idle speed: 3,200 min<sup>-1</sup>
- Saw blade: Ø 205 x Ø 30 x 2.5 mm
- Max. Cutting depth Bench circular saw: 45 mm at 90° 30 mm at 45°
- Max. Cutting depth Crosscut / Mitre saw: 55 mm at 90° 42 mm at 45°
- Max. Cutting width Crosscut / Mitre saw: 180 mm at 90° 125 mm at 45°

## Logistic Information:

<b>Type:</b>	<b>TGS 1200</b>	<b>Tool:</b>	<b>Bench, Crosscut and Mitre Saw</b>
<b>Art.-No.:</b>	43.072.01	<b>Sales unit:</b>	1 pc
<b>Ident-No.:</b>	01017	<b>20``:</b>	180 pcs
<b>Bar Code:</b>	4006825 539127	<b>40``:</b>	380 pcs
<b>Packaging:</b>	622 x 566 x 440 mm	<b>40`` HC:</b>	455 pcs
		<b>Weight:</b>	37 kgs (gross)

