



# 650W RECIPROCATING SAW

User Guide & Warranty



## After Sales Support

Now you have purchased a Power Craft product you can rest assured in the knowledge that as well as your 3 year parts and labour warranty you have the added peace of mind of dedicated helplines and web support

## AFTER SALES SUPPORT

UK / N.IRELAND HELPLINE NO 0151 649 1500

REP. IRELAND HELPLINE NO 1890 946 244

MODEL NUMBER : PRS 600

# Contents

---

- 03 Safety regulations
- 05 Proper use
- 07 Layout
- 07 Starting up
- 07 Electronic stroke rate control
- 07 Changing the saw blade
- 07 Adjusting the soleplate
- 07 Use as a jigsaw
- 07 Technical data
- 08 Cleaning, maintenance and ordering of spare parts
- 08 Disposal and recycling



**Read the complete operating manual with due care and keep it in a safe place.  
If you give the machine to any other person, hand over this operating manual as well!**

## Congratulations on choosing to buy a PowerCraft product.

By doing so you now have the assurance and peace of mind that comes with purchasing a product made by one of Europe's leading manufacturers. All products brought to you by PowerCraft are manufactured to the highest standards of performance and safety, and, as part of our philosophy for customer service and satisfaction, are backed by our comprehensive 3 Year Warranty. We hope you will enjoy using your purchase for many years to come.

### ⚠ Important!

When using equipment, a few safety precautions must be observed to avoid injuries and damage. Please read the complete operating manual with due care. Keep this manual in a safe place, so that the information is available at all times. If you give the equipment to any other person, give them these operating instructions as well.

We accept no liability for damage or accidents which arise due to non-observance of these instructions and the safety information.

## 1. Safety regulations

### GENERAL SAFETY REGULATIONS

**CAUTION!** Read the instructions in full. Any errors made in following the instructions set out below may result in an electric shock, fire and/or serious injury. The term "electric tool" used below refers to electric tools operated from the mains power supply (with a power cable) and to battery operated electric tools (without a power cable).

### KEEP THESE REGULATIONS IN A SAFE PLACE!

#### WORK AREA

- **Keep your work area clean and tidy.**  
Disorder and insufficiently illuminated work areas can lead to accidents.
- **Do not use this tool in a potentially explosive environment containing combustible liquids, gases or dust.**  
Electric tools generate sparks, which can in turn ignite dust or vapors.
- **Keep children and other persons away from the electric tool while it is being used.**  
Allowing yourself to get distracted can cause you to lose control of the tool.

### ELECTRICAL SAFETY

- **The tool's connector plug must be able to fit into the socket outlet. Do not modify the plug in any way! Do not use adapter plugs in conjunction with electrically grounded tools.**  
Unmodified plugs and matching socket outlets reduce the risk of an electric shock.
- **Avoid touching grounded surfaces, such as those of pipes/tubes, heaters, cookers and refrigerators.**  
There is an increased risk of getting an electric shock if you are electrically grounded.
- **Keep the tool away from rain and moisture/wet conditions.**  
Penetration of water into an electric tool increases the risk of an electric shock.
- **Do not use the cable to carry the tool, hang it up or pull the plug out of the socket. Keep the cable away from sources of heat, oil, sharp edges and moving tool parts.**  
Damaged or tangled cable increases the risk of an electric shock.
- **If you intend to use an electric tool outdoors, ensure that you only use extension cable that is approved for outdoor applications.**  
Using extension cable that is approved for outdoor applications reduces the risk of an electric shock.
- **Connect the electric tool to the mains power supply (230V~, 50Hz) via a socket-outlet with earthing contact with maximum 16A protection. We recommend that you fit a residual-current protection device with a maximum nominal tripping current of 30 mA. Seek the advice of your electrician.**

### PERSONAL SAFETY

- **Be alert, work conscientiously and exercise appropriate caution when using the electric tool. Do not use the tool if you are tired or are under the influence of drugs/medication or alcohol.**  
One moment of carelessness or lack of attention when using the electric tool can cause serious bodily injury!
- **Always wear personal protective equipment (PPE), including safety goggles.**  
Wearing personal protective equipment such as a dust mask, non-slip footwear, protective headgear and ear muffs (depending upon the type of electric tool and the particular application) reduces the risk of sustaining injury.

**Wear ear-muffs.**

The impact of noise can cause damage to hearing.

**Wear a breathing mask.**

Dust which is harmful to health can be generated when working on wood and other materials. Never use the device to work on any materials containing asbestos!

**Wear safety goggles.**

Sparks generated during working or splinters, chips and dust emitted by the device can cause loss of sight.

- **Avoid unintentional starting the machine. Ensure that the switch is in the "OFF" position before you insert the plug into the socket outlet.**  
If you move or reposition the tool from one area of job to another whilst still connected to the power supply ensure you do not have your finger on the on/off switch whilst doing so.
- **Remove adjusting tools/wrench(es) prior to switching on the power tool.**  
A tool or wrench that is positioned inside a rotating power tool part can cause injury.
- **Do not overestimate your abilities. Make sure you stand squarely and keep your balance at all times.**  
This way, you will be able to have better control over the tool in unexpected situations.
- **Wear suitable clothes. Never wear loose fitting clothes or jewellery. Keep hair, clothes and gloves away from moving parts.**  
Loose clothing, dangling jewellery and long hair can be caught by moving parts.
- **If dust extraction and dust collection devices can be mounted, ensure that these are connected and are properly used.**  
Use of such equipment reduces the risk associated with dust accumulation.

**CAREFUL HANDLING AND USE OF ELECTRIC TOOLS**

- **Do not overload your tool. Only use suitable electric tools to perform your work.**  
Using the right electric tool allows you to work better and safer within the tool's quoted capacity range.
- **Do not use an electric tool whose switch is defective.**  
An electric tool that no longer can be switched on or off is dangerous and must be repaired.
- **Always pull the plug out of the socket outlet before making any adjustments. Exchange accessory parts or put away the tool.**  
This precaution eliminates the possibility of inadvertently starting the tool.
- **When not in use, store electric tools out of the reach of children. Do not allow those persons to use this tool who are unfamiliar with it or who have not read these instructions.**  
Electric tools are dangerous when they are used by inexperienced persons.
- **Take good care of your tool. Check that moving parts properly function and do not jam, that parts are not broken off or damaged in any way and that the tool can be used to its full capacity. Have damaged parts repaired prior to using the tool.**  
The cause of many accidents can be traced back to poorly maintained electric tools.
- **Keep your blades sharp and clean.**  
Properly maintained blades with sharp edges jam less frequently and are easier to use.
- **Use electric tools and plug-in tools, etc. in compliance with these instructions and in the manner that is prescribed for the model at hand. In so doing, pay due attention to working conditions and the job to be performed.**  
Using electric tools for applications other than those intended can lead to dangerous situations.
- **If the power cable of the electric tool is damaged, it must be replaced by a specially prepared connection lead which can be obtained from the customer service center.**

**SERVICE**

- **Have your tool repaired only by authorized specialists using original replacement parts.**  
This will ensure that your tool remains safe to use.

## ADDITIONAL SAFETY RULES

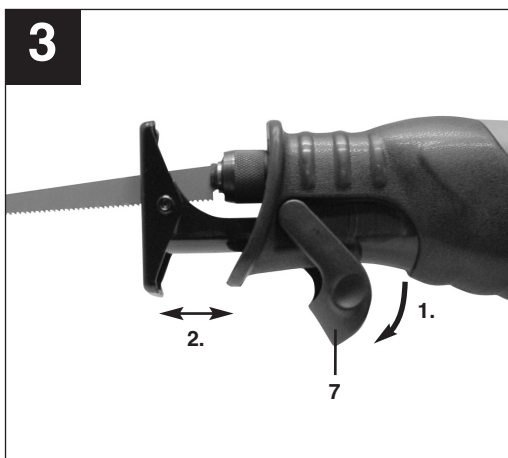
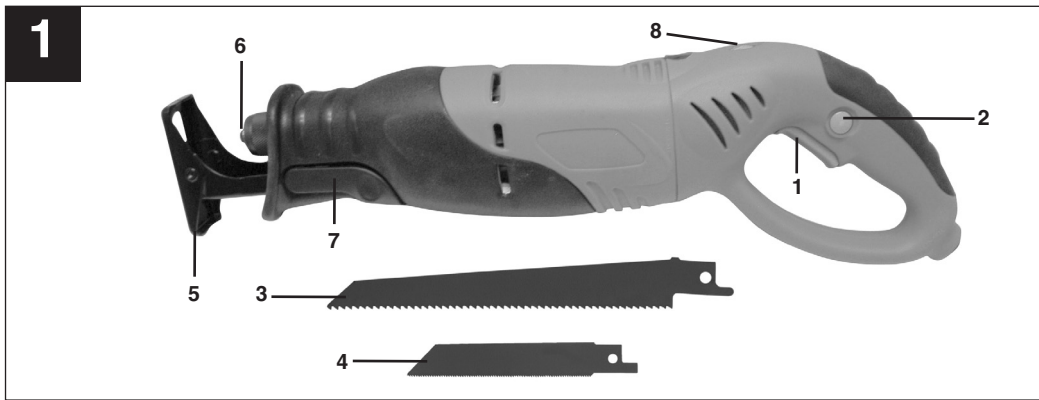
- Always check the saw, the power cable and the plug before use. Only ever use the saw if it is in perfect, undamaged condition. Damaged parts have to be repaired or replaced immediately by a qualified electrician.
- Always pull the plug out of the power socket before carrying out any work on the saw, before changing the blade and in periods of non-use.
- Always run the power cable away from the back of the saw to guard it from damage.
- For outdoors work use only suitably approved extension cables with a minimum conductor cross section of 1,5 mm<sup>2</sup>. The plug connectors must have earthing contacts and be splash-proof.
- Keep the saw in a safe place and out of the reach of children.
- Always wear goggles, safety gloves and ear muffs when sawing. Wear a dust mask on dusty jobs.
- Never leave any keys or adjustment spanners in position on the saw. Before switching on, check that all keys and adjustment spanners have been removed.
- Secure the workpiece (with a clamp) so that it cannot slip.
- It is imperative to use a dust extractor when working on stone.
- **It is prohibited to use the saw on asbestos materials.**  
Please note the accident prevention regulations in force in your country.
- Use only original spare parts.
- The level of noise at the workplace may exceed 85 dB(A). In this case you will need to introduce noise protection measures for the user.
- Make sure of your footing. Avoid abnormal working positions.
- Keep your electric tool out of the rain. Never use electric tools in wet or damp conditions, and never use them near flammable liquids.
- Never carry the electric tool by its power cable. Keep the power cable safe from damage. Oil, solvent and sharp edges can damage cables.
- Keep your workplace tidy.
- Make sure the power switch is off before inserting the plug in the socket.
- Wear suitable clothing. Never wear loose-fitting clothes or jewellery. Use a hair-net on long hair.
- For your own safety, use only the manufacturer's accessories and attachments.
- Use only sharp saw blades that are in perfect condition. Replace bent and cracked saw blades immediately.

- After switching off the saw, do not press against the side of the blade to bring it to a halt.
- Always cut at a steady rate of progress. This will prevent accidents and prolong the life of your saw and the blade.
- Use only a damp cloth to clean your saw. Do not use any aggressive agents for cleaning purposes.
- Check your saw to ensure that it is in good working order. If the saw fails to work properly, have it checked. Leave all maintenance and inspection work to a qualified electrician, approved by the manufacturer
- **Check the fastening screws**  
Check the fastening screws regularly and make sure that they are all securely tightened. Tighten any loose screws immediately, otherwise there is the risk of serious injuries.

## 2. Proper use

The reciprocating saw is designed for sawing wood, iron, non-ferrous metals and plastic. It should only be used with the appropriate saw blade.

Please note that our equipment has not been designed for use in commercial, trade or industrial applications. Our warranty will be voided if the machine is used in commercial, trade or industrial businesses or for equivalent purposes.



### 3. Layout (Fig. 1/Fig. 2)

- 1 On/Off switch
- 2 Button catch
- 3 Wood saw blade
- 4 Metal saw blade
- 5 Soleplate
- 6 Blade holder
- 7 Locking lever for soleplate
- 8 Wheel selector for selecting the blade speed
- 9 Ring on the blade holder

### 4. Starting up (Fig. 1)

Switching on: Press the ON/OFF switch (1) toward the handle.

To lock the switch in place, press the button catch (2) as well.

Switching off: Let go of the ON/OFF switch or, if the switch is locked in place, press the ON/OFF switch again briefly and let go.

### 5. Electronic stroke rate control

Use the wheel selector (8) to set the required blade speed.

The general rules for cutting speeds for cutting work apply.

### 6. Changing the saw blade (Fig. 2)

Always switch off and unplug the reciprocating saw before working on the machine or changing the saw blade.

Turn the ring (9) on the blade holder (6) as shown in Fig. 2 until the blade (3/4) lets itself be slipped into the slot of the blade holder (6).

When you now let go of the ring (9) again, the ring (9) should return to its starting position.

If this fails to happen, try turning the ring (9) by hand into its starting position.

Pull on the blade to check whether it sits tightly in the holder.

### 7. Adjusting the soleplate (Fig. 3)

#### Important.

Pull out the power plug.

To adjust the soleplate, loosen the lever (7) until the soleplate can be moved. Set the required distance and refasten the lever (7).

Check that the soleplate is secure.

### 8. Use as a jigsaw (Fig. 4)

Place the reciprocating saw on the material to be cut as shown in Fig. 4. Switch on the reciprocating saw and push it along against the material to be cut. Adapt your cutting speed to the material.

### 9. Technical data

Rated voltage:	230 V ~ 50 Hz
Power:	650 W
Stroke rate:	500-3000 min <sup>-1</sup>
Stroke height:	20 mm
Cutting depth in wood:	115 mm
Cutting depth in iron:	10 mm
Sound pressure level L <sub>pA</sub> :	88,8 dB
Sound power level L <sub>WA</sub> :	99,8 dB
Vibration a <sub>hv</sub>	10,2 m/s <sup>2</sup>
Totally insulated	II/□
Weight	2,82 Kg

## 10. Cleaning, maintenance and ordering of spare parts

Always pull out the mains power plug before starting any cleaning work.

### 10.1 Cleaning

- Keep all safety devices, air vents and the motor housing free of dirt and dust as far as possible. Wipe the equipment with a clean cloth or blow it with compressed air at low pressure.
- We recommend that you clean the device immediately each time you have finished using it.
- Clean the equipment regularly with a moist cloth and some soft soap. Do not use cleaning agents or solvents; these could attack the plastic parts of the equipment. Ensure that no water can seep into the device.

### 10.2 Carbon brushes

- In case of excessive sparking, have the carbon brushes checked only by a qualified electrician. Important! The carbon brushes should not be replaced by anyone but a qualified electrician.

### 10.3 Maintenance

- There are no parts inside the equipment which require additional maintenance.

### 10.4 Ordering replacement parts:

Please quote the following data when ordering replacement parts:

- Type of machine
- Article number (Art-Nr) of the machine
- Model number of the machine
- Replacement part number of the part required

For our latest prices and information please go to [www.isc-gmbh.info](http://www.isc-gmbh.info)

## 11. Disposal and recycling

The unit is supplied in packaging to prevent its being damaged in transit. This packaging is raw material and can therefore be reused or can be returned to the raw material system.

The unit and its accessories are made of various types of material, such as metal and plastic.

Defective components must be disposed of as special waste. Ask your dealer or your local council.





## Konformitätserklärung

Einhell AG· Wiesenweg 22 · D-94405 Landau/Isar

**D** erklärt folgende Konformität gemäß EU-Richtlinie und Normen für Artikel  
**GB** declares conformity with the EU Directive and standards marked below for the article  
**F** déclare la conformité suivante selon la directive CE et les normes concernant l'article  
**NL** verklaart de volgende conformiteit in overeenstemming met de EU-richtlijn en normen voor het artikel  
**E** declara la siguiente conformidad a tenor de la directiva y normas de la UE para el artículo  
**P** declara a seguinte conformidade de acordo com a directiva CE e normas para o artigo  
**S** förklarar följande överensstämmelse enl. EU-direktiv och standarder för artikeln  
**FIN** ilmoittaa seuraavaa Euroopan unionin direktiivien ja normien mukaista yhdenmukaisuutta tuotteelle  
**N** erklærer herved følgende samsvar med EU-direktiv og standarder for artikkel  
**HR** заявляє о соответствии товара следующим директивам и нормам ЕС  
**IS** izjavljuje sljedeću uskladenost s odredbama i normama EU za artikl.  
**RO** declară următoarea conformitate cu linia directoare CE și normele valabile pentru articolul.  
**TR** ürün ile ilgili olarak AB Yönetmelikleri ve Normları gereğince aşağıdaki uygunluk açikla masını sunar.  
**GR** δηλώνει την ακόλουθη συμφώνια σύμφωνα με την Οδηγία ΕΕ και τα πρότυπα για το προϊόν

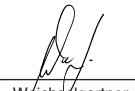
**I** dichiara la seguente conformità secondo la direttiva UE e le norme per l'articolo  
**DK** attesterer følgende overensstemmelse i henhold til EU-direktiv og standarder for produkt  
**CZ** prohlašuje následující shodu podle směrnice EU a norem pro výrobek.  
**H** a következő konformitást jelenti ki a termékerekre vonatkozó EU-irányvonalak és normák szerint  
**SV** pojasnjuje sledečo skladnost po smernici EU in normah za artikel.  
**PL** deklaruje zgodność wymienionego poniżej artykułu z następującymi normami na podstawie dyrektywy WE.  
**SK** vydáva nasledujúce prehlásenie o zhode podľa smernice EÚ a noriem pre výrobok.  
**BG** декларира следното съответствие съгласно директивите и нормите на ЕС за продукта.  
**UKR** заявляє про відповідність згідно з Директивою ЄС та стандартами, чинними для даного товару  
**ES** deklareerib vastavuse järgnevalele EL direktiivi dele ja normidele  
**LT** deklaruoja atitiktį pagal ES direktyvas ir normas straipsniui  
**CY** izjavljuje sledeći konformitet u skladu s odredbom EZ i normama za artikl  
**LV** Atbilstības sertifikāts apliecina zemāk minēto preču atbilstību ES direktīvām un standartiem  
**IS** Samræmisfyrirýsing staðfestir eftirfarandi samræmi samkvæmt reglum Evrópubandalagsins og stöðlum fyrir vörur

## Universalsäge PRS 600

- |                                                          |                                           |
|----------------------------------------------------------|-------------------------------------------|
| <input checked="" type="checkbox"/> 98/37/EG             | <input type="checkbox"/> 87/404/EWG       |
| <input checked="" type="checkbox"/> 2006/95/EG           | <input type="checkbox"/> R&TTED 1999/5/EG |
| <input type="checkbox"/> 97/23/EG                        | <input type="checkbox"/> 2000/14/EG:      |
| <input checked="" type="checkbox"/> 89/336/EWG_93/68/EEC | <input type="checkbox"/> 95/54/EG:        |
| <input type="checkbox"/> 90/396/EWG                      | <input type="checkbox"/> 97/68/EG:        |
| <input type="checkbox"/> 89/686/EWG                      |                                           |

**EN 60745-1; EN 60745-2-11; EN 55014-1;  
EN 55014-2; EN 61000-3-2; EN 61000-3-3**

Landau/Isar, den 14.05.2007

  
Weichselgartner  
General-Manager

  
Vogelmann  
Product-Management

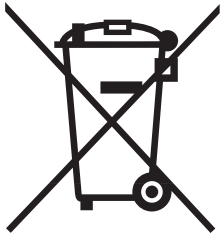
Art.-Nr.: 43.261.21 I.-Nr.: 01017  
Subject to change without notice

Archivierung: 4326120-24-4155050-06

Technical changes subject to change

Helpline No. UK / Northern Ireland 0151 649 1500 Rep. Ireland 189 094 6244  
Model Number: PRS 600

09



For EU countries only

Never place any electric tools in your household refuse.

To comply with European Directive 2002/96/EC concerning old electric and electronic equipment and its implementation in national laws, old electric tools have to be separated from other waste and disposed of in an environment-friendly fashion, e.g. by taking to a recycling depot.

Recycling alternative to the demand to return electrical devices:

As an alternative to returning the electrical device, the owner is obliged to cooperate in ensuring that the device is properly recycled if ownership is relinquished. This can also be done by handing over the used device to a returns center, which will dispose of it in accordance with national commercial and industrial waste management legislation. This does not apply to the accessories and auxiliary equipment without any electrical components which are included with the used device.

The reprinting or reproduction by any other means, in whole or in part, of documentation and papers accompanying products is permitted only with the express consent of ISC GmbH.

Helpline No. UK / Northern Ireland 0151 649 1500 Rep. Ireland 189 094 6244  
Model Number: PRS 600

10

# WARRANTY CERTIFICATE



Year of manufacture: 2007

Reciprocating Saw PRS 600

Congratulations! You have made an excellent choice with the purchase of this Quality product. Our commitment to quality also includes our service. Should you, contrary to expectations, experience defects due to material or manufacturing faults during private use within 36 months of the date of purchase we shall be liable for warranty in accordance with statutory warranty regulations, provided that:

- The device was not put to any use other than the intended.
- Was not overloaded.
- Was not used with the wrong accessories.
- Repairs were not carried out by any other than the authorised workshop.

The warranty certificate is only valid in connection with the receipt. Please keep both in a safe place. The warranty does not affect your statutory rights.

The product is guaranteed for a period of three years beginning on the day of purchase. Keep your purchase receipt safe as proof of the date of purchase. The guarantee period can only be extended for the duration of any repair required.

During the warranty period, defective devices can be sent FREIGHT PREPAID to the service address stated at the end of this booklet. We will, at our discretion either repair or exchange the device in accordance with warranty legislation.

**Please include the following when sending in your product for repair:**

1. The receipt (proof of purchase)
2. This warranty certificate with your name, address, contact details and a fault description completed overleaf.

If the original receipt is not enclosed the repair will be charged for in all cases. After the warranty has expired you can still send defective devices for repairs FREIGHT PREPAID to the address at the end of this booklet. Quotes as well as repairs after warranty period are to be paid for in all cases. Ensure the product is sent well packed as no responsibility can be accepted for items lost or damaged in transit. This warranty does not affect your statutory rights.



## 650W RECIPROCATING SAW

PRS 600

If you are requested by the manufacturer to return the item for repair please complete the enclosed section and send it together with your product and your receipt (proof of purchase) to the service address shown below.

Name:

Address:



Contact Telephone No.:

Location of purchase:

Fault Description:

---

---

---

---

---

---

In order to deal with your enquiry please call our customer helpline on the number shown on this page.

Service:  
Einhell UK Ltd  
Unit 5 Morpeth Wharf  
Twelve Quays  
Birkenhead, Wirral  
**CH 41 1LF**

**UK / N.IRELAND HELPLINE NO: 0151 649 1500**  
**REP. IRELAND HELPLINE NO: 1890 946 244**