

LE-Bottomer-Set

LE-KGSL 251 UG / LE-PS 600 E - Set

Art.-No.: **42.570.40**

Bar Code: 4006825514667

Sales Unit: 1 pc

Cross Cut and Mitre Saw with Laser LE-KGSL 251 UG:

The mitre saw is equipped with an additional laser function for the highest cutting accuracy. Due to the serial undercarriage the saw can be used in optimal working height position. The removable plastic guide allows tailor to panels up to a max. width of 155 mm in one cut (up to 28 mm work piece thickness).

Technical data:

- Mains: 230 V ~ 50 Hz
- Power: 1800 watts
- Idle speed n_0 : 4800 min^{-1}
- Carbide tipped saw blade: $\varnothing 250 \times \varnothing 30 \times 3,0 \text{ mm}$
- Number of teeth: 60
- Tilting range: $-45^\circ/0^\circ/+45^\circ$
- Mitre cutting: 0° to 45° to the left
- Cutting width $90^\circ \times 90^\circ$
 - up to 28 mm working piece height: 155 x 65 mm
 - more than 28 mm w. piece height: 125 x 90 mm
- Cutting width $90^\circ \times 45^\circ$
 - up to 28 mm working piece height: 120 x 65 mm
 - more than 28 mm w. piece height: 90 x 90 mm
- Cutting width $45^\circ \times 45^\circ$: 90 x 45 mm
(Double mitre cuts)
- Weight Set: 28 kg
- Packing dimensions Set: 520 x 460 x 440 mm



Jig Saw LE-PS 600 E:

Laser Jig Saw for multi-purpose use. An adjustable saw plate allows you to set various angles of tilt. Additional equipped with blade speed control electronics and variable pendulum action.

Features:

- Electronic stroke control
- Guide roller 45° tiltable to the left and right (1)
- Protection shield (2)
- 3-settings pendulum 0/1/2

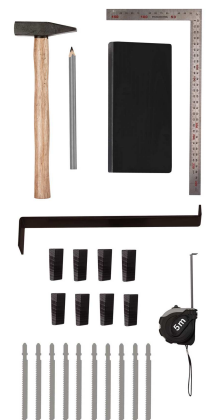
Technical data:

- Mains: 230 V ~ 50 Hz
- Power: 600 watts
- Strokes n_0 : 500-3,200 min^{-1}
- Cutting depth: wood max. 65 mm
iron max. 8 mm
plastics max. 20 mm
- Mitre cut: up to 45°



Standard accessory:

- 10x saw blades for jig saw
- 5 m tape measure
- Pencil
- 1x hammer (500 g)
- 1x stop angle 300 x 150 mm
- 1x pull and drub iron
- 1x drub block of plastics
- 8x pressing on cotters of plastics



Abbildungen können nicht im Serien-Lieferumfang enthaltenes Zubehör darstellen / Illustrations can contain accessories, which are not included in standard extent of delivery.

Abbildungen ähnlich, produktionsbedingte Abweichung vorbehalten / Illustration similar (in design), production-wise modifications reserved

File: G:\Webshop\T-Produktbeschreibung\60\Originale_Englisch_PA04\4257040_01015.doc

Erstelldatum / create date: 08.06.2005 9:50

Aktualisiert / up dated: 20.10.2005