

MAINTENANCE

WARNING! BEFORE CLEANING OR CARRYING OUT ANY MAINTENANCE PROCEDURE, ENSURE THAT THE BATTERIES HAVE BEEN REMOVED.

WARNING! NEVER ALLOW ANY LIQUID TO GET INSIDE THE TOOL., NEVER IMMERSE ANY PART OF THE TOOL INTO LIQUID.

Cleaning

- Keep the ventilation slots of the tool clean at all times to ensure efficient operation.
- After each use, blow air through the tool housing to ensure it is free from all dust, dirt, etc. Build up of dust or dirt particles may cause the tool to overheat and shorten the life of the tool.
- If the housing of the tool requires cleaning, do not use solvents. Use of a cloth only is recommended.
- Remove the battery and let the machine cool down.
- Remove the filter or coffee pad from the filter holder/coffee pad holder.
- Wash the filter, filter holder, coffee pad holder, water tank, coffee cup, cover and measuring spoon thoroughly with hot water and then rinse the various objects with clear hot water.
- Wipe the objects with a cloth and allow everything to dry completely.
- Re-fit all parts to the coffee machine.
- Wipe the outside of the coffee machine with a soft cloth that has been slightly dampened with water.

Note: Do not use any agents of a chemical, alkaline, abrasive or otherwise aggressive nature.

Note: Cleaning agents or disinfectants might damage the surfaces.

Note: To protect against fire, electric shock and injury, do not dip the machine in water or other liquids.

Note: Make sure that no water remains in the water tank for longer than 24 hours.

Storage

When not in use, the tool should be stored in a dry, frost free location, keep out of children's reach.

Note: Ozito Industries will not be responsible for any damage or injuries caused by repair of the tool by an unauthorised person or by mishandling.

DESCRIPTION OF SYMBOLS

V	Volts		Direct Current
mm	Millimetre	ml	Millilitre
∅	Diameter		Warning
	Regulatory Compliance Mark (RCM)		Class III
W	Watts		Hot surfaces-burns fingers or hands
	Read Instruction Manual		

CARING FOR THE ENVIRONMENT



Power tools that are no longer usable should not be disposed of with household waste but in an environmentally friendly way. Please recycle where facilities exist. Check with your local council authority for recycling advice.



Recycling packaging reduces the need for landfill and raw materials. Reuse of recycled material decreases pollution in the environment. Please recycle packaging where facilities exist. Check with your local council authority for recycling advice.

SPARE PARTS

Spare parts can be ordered from the Special Orders Desk at your local Bunnings Warehouse.

For further information, or any parts not listed here, visit www.ozito.com.au or contact Ozito Customer Service:

Australia 1800 069 486

New Zealand 0508 069 486

E-mail: enquiries@ozito.com.au

ELECTRICAL SAFETY

WARNING! When using electric tools basic safety precautions should always be followed to reduce the risk of fire, electric shock and personal injury. Read the whole manual carefully and make sure you know how to switch the tool off in an emergency, before operating the tool. Save these instructions and other documents supplied with this tool for future reference.

- This appliance is not intended for use by persons (including children) with reduced physical, sensory or mental capabilities, or lack of experience and knowledge, unless they have been given supervision or instruction concerning use of the appliance by a person responsible for their safety.
- Children should be supervised to ensure that they do not play with the appliance.
- This appliance is compatible and only to be used with all batteries & chargers from the Ozito PXC range.
- Refer to the PXC battery and charger manuals for information regarding charging, use and storage.

GENERAL POWER TOOL SAFETY WARNINGS

WARNING! Read all safety warnings, instructions, illustrations and specifications provided with this power tool. Failure to follow all instructions listed below may result in electric shock, fire and/or serious injury.

Save all warnings and instructions for future reference.

The term "power tool" in the warnings refers to your mains-operated (corded) power tool or battery-operated (cordless) power tool.

1) Work area safety

a) Keep work area clean and well lit. Cluttered or dark areas invite accidents.

b) Do not operate power tools in explosive atmospheres, such as in the presence of flammable liquids, gases or dust. Power tools create sparks which may ignite the dust or fumes.

c) Keep children and bystanders away while operating a power tool. Distractions can cause you to lose control.

2) Electrical safety

a) Power tool plugs must match the outlet. Never modify the plug in any way. Do not use any adapter plugs with earthed (grounded) power tools. Unmodified plugs and matching outlets will reduce risk of electric shock.

b) Avoid body contact with earthed or grounded surfaces, such as pipes, radiators, ranges and refrigerators. There is an increased risk of electric shock if your body is earthed or grounded.

c) Do not expose power tools to rain or wet conditions. Water entering a power tool will increase the risk of electric shock.

d) Do not abuse the cord. Never use the cord for carrying, pulling or unplugging the power tool. Keep cord away from heat, oil, sharp edges or moving parts. Damaged or entangled cords increase the risk of electric shock.

e) When operating a power tool outdoors, use an extension cord suitable for outdoor use. Use of a cord suitable for outdoor use reduces the risk of electric shock.

f) If operating a power tool in a damp location is unavoidable, use a residual current device (RCD) protected supply. Use of an RCD reduces the risk of electric shock.

3) Personal safety

a) Stay alert, watch what you are doing and use common sense when operating a power tool. Do not use a power tool while you are tired or under the influence of drugs, alcohol or medication. A moment of inattention while operating power tools may result in serious personal injury.

b) Use personal protective equipment. Always wear eye protection. Protective equipment such as a dust mask, non-skid safety shoes, hard hat or hearing protection used for appropriate conditions will reduce personal injuries.

c) Prevent unintentional starting. Ensure the switch is in the off-position before connecting to power source and/or battery pack, picking up or carrying the tool. Carrying power tools with your finger on the switch or energising power tools that have the switch on invites accidents.

d) Remove any adjusting key or wrench before turning the power tool on. A wrench or a key left attached to a rotating part of the power tool may result in personal injury.

e) Do not overreach. Keep proper footing and balance at all times. This enables better control of the power tool in unexpected situations.

f) Dress properly. Do not wear loose clothing or jewellery. Keep your hair and clothing away from moving parts. Loose clothes, jewellery or long hair can be caught in moving parts.

g) If devices are provided for the connection of dust extraction and collection facilities, ensure these are connected and properly used. Use of dust collection can reduce dust-related hazards.

h) Do not let familiarity gained from frequent use of tools allow you to become complacent and

WARNING! Always remove the battery from the tool:

- when the batteries are to be changed,
- when the tool is left unattended,
- when the tool is being checked, cleaned, or having maintenance work done,
- when the tool is to be stored,
- or if the tool vibrates abnormally.
- Do not combine different types of batteries or new and used batteries.
- Do not use modified or damaged batteries.

ignore tool safety principles. A careless action can cause severe injury within a fraction of a second.

4) Power tool use and care

a) Do not force the power tool. Use the correct power tool for your application. The correct power tool will do the job better and safer at the rate for which it was designed.

b) Do not use the power tool if the switch does not turn it on and off. Any power tool that cannot be controlled with the switch is dangerous and must be repaired.

c) Disconnect the plug from the power source and/or remove the battery pack, if detachable, from the power tool before making any adjustments, changing accessories, or storing power tools. Such preventive safety measures reduce the risk of starting the power tool accidentally.

d) Store idle power tools out of the reach of children and do not allow persons unfamiliar with the power tool or these instructions to operate the power tool. Power tools are dangerous in the hands of untrained users.

e) Maintain power tools and accessories. Check for misalignment or binding of moving parts, breakage of parts and any other condition that may affect the power tool's operation. If damaged, have the power tool repaired before use. Many accidents are caused by poorly maintained power tools.

f) Keep cutting tools sharp and clean. Properly maintained cutting tools with sharp cutting edges are less likely to bind and are easier to control.

g) Use the power tool, accessories and tool bits etc. in accordance with these instructions, taking into account the working conditions and the work to be performed. Use of the power tool for operations different from those intended could result in a hazardous situation.

h) Keep handles and grasping surfaces dry, clean and free from oil and grease. Slippery handles and grasping surfaces do not allow for safe handling and control of the tool in unexpected situations.

5) Battery tool use and care

a) Recharge only with the charger specified by the manufacturer. A charger that is suitable for one type of battery pack may create a risk of fire when used with another battery pack.

b) Use power tools only with specifically designated battery packs. Use of any other battery packs may create a risk of injury and fire.

c) When battery pack is not in use, keep it away from other metal objects, like paper clips, coins, keys, nails, screws or other small metal objects, that can make a connection from one terminal to another. Shorting the battery terminals together may cause burns or a fire.

d) Under abusive conditions, liquid may be ejected from the battery; avoid contact. If contact accidentally occurs, flush with water. If liquid contacts eyes, additionally seek medical help. Liquid ejected from the battery may cause irritation or burns.

e) Do not use a battery pack or tool that is damaged or modified. Damaged or modified batteries may exhibit unpredictable behaviour resulting in fire, explosion or risk of injury.

f) Do not expose a battery pack or tool to fire or excessive temperature. Exposure to fire or temperature above 130 °C may cause explosion.

g) Follow all charging instructions and do not charge the battery pack or tool outside the temperature range specified in the instructions. Charging improperly or at temperatures outside the specified range may damage the battery and increase the risk of fire.

6) Service

a) Have your power tool serviced by a qualified repair person using only identical replacement parts. This will ensure that the safety of the power tool is maintained.

b) Never service damaged battery packs. Service of battery packs should only be performed by the manufacturer or authorized service providers.



COFFEE MACHINE

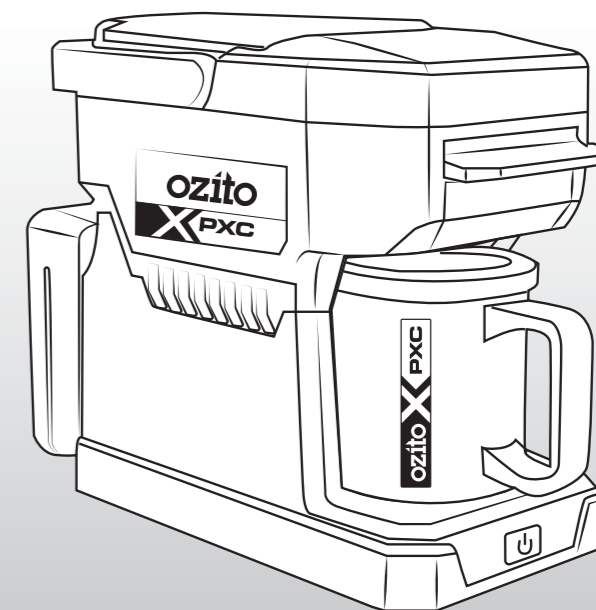
INSTRUCTION MANUAL

SPECIFICATIONS

Input: 18V
 Power Rating: 220W
 Water Tank Capacity: 240ml
 Coffee Cup Capacity: 280ml
 Coffee Pad Holder: Ø60mm
 Brewing Time: 6-8mins
 Weight: 1.17kg

ozito.com.au

5 YEAR
 REPLACEMENT WARRANTY



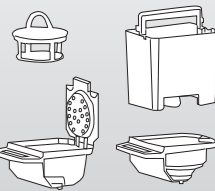
STANDARD EQUIPMENT



Cordless Coffee Machine



Coffee Mug with Lid



Filter, Ground Coffee Holder, Coffee Pad Holder, Water Tank, Measuring Spoon

PXCMS-018

WARRANTY

IN ORDER TO MAKE A CLAIM UNDER THIS WARRANTY YOU MUST RETURN THE PRODUCT TO YOUR NEAREST BUNNINGS WAREHOUSE WITH YOUR BUNNINGS REGISTER RECEIPT. PRIOR TO RETURNING YOUR PRODUCT FOR WARRANTY PLEASE TELEPHONE OUR CUSTOMER SERVICE HELPLINE:

Australia 1800 069 486
New Zealand 0508 069 486

TO ENSURE A SPEEDY RESPONSE PLEASE HAVE THE MODEL NUMBER AND DATE OF PURCHASE AVAILABLE. A CUSTOMER SERVICE REPRESENTATIVE WILL TAKE YOUR CALL AND ANSWER ANY QUESTIONS YOU MAY HAVE RELATING TO THE WARRANTY POLICY OR PROCEDURE.

WARNING

The following actions will result in the warranty being void.

- If the tool has been operated on a supply voltage other than that specified on the tool.
- If the tool shows signs of damage or defects caused by or resulting from abuse, accidents or alterations.
- Failure to perform maintenance as set out within the instruction manual.
- If the tool is disassembled or tampered with in any way.

The benefits provided under this warranty are in addition to other rights and remedies which are available to you at law.

Our goods come with guarantees that cannot be excluded at law. You are entitled to a replacement or refund for a major failure and for compensation for any other reasonably foreseeable loss or damage. You are also entitled to have the goods repaired or replaced if the goods fail to be of acceptable quality and the failure does not amount to a major failure.

Generally you will be responsible for all costs associated with a claim under this warranty, however, where you have suffered any additional direct loss as a result of a defective product you may be able to claim such expenses by contacting our customer service helpline above.

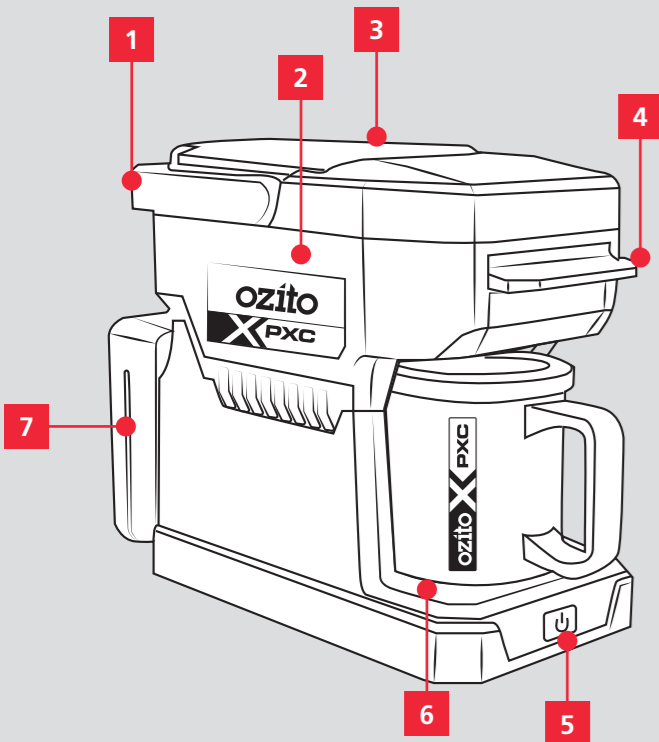
5 YEAR REPLACEMENT WARRANTY

Your Product is guaranteed for a period of 60 months from the original date of purchase and is intended for DIY (Do It Yourself) use only. If a product is defective it will be replaced in accordance with the terms of this warranty. **Lithium Ion batteries and chargers are covered by a 36 month warranty** and are excluded from the warranty extension. Warranty excludes consumable parts.

KNOW YOUR PRODUCT

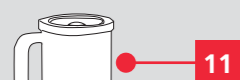
CORDLESS COFFEE MACHINE

- 1. Carry Handle
- 2. Water Tank
- 3. Water Tank Lid
- 4. Coffee Holder
- 5. On/Off Button with Indicator
- 6. Coffee Mug Holder
- 7. Battery Seating



ACCESSORIES

- 8. Filter
- 9. Ground Coffee Holder
- 10. Coffee Pad Holder
- 11. Coffee Mug with Lid
- 12. Water Tank
- 13. Measuring Spoon



BATTERY & CHARGER

This tool is compatible with all batteries & chargers from the Ozito PXC range.

ONLINE MANUAL

Scan this QR Code with your mobile device to take you to the online manual.

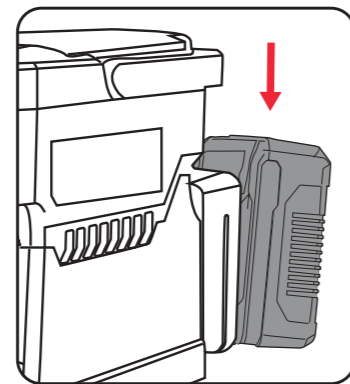


SETUP & PREPARATION

1. FITTING THE BATTERY

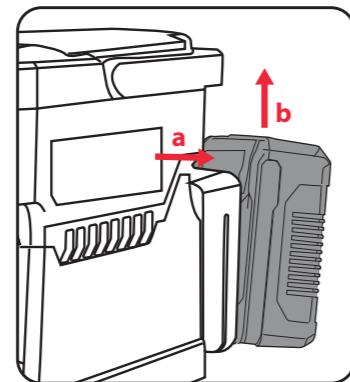
Installing The Battery Pack

- Slide the battery into the tool until it clicks into place.



Removing The Battery Pack

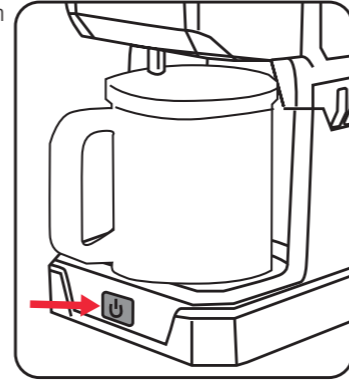
- Hold down the battery release button (a) and then slide the battery out (b).



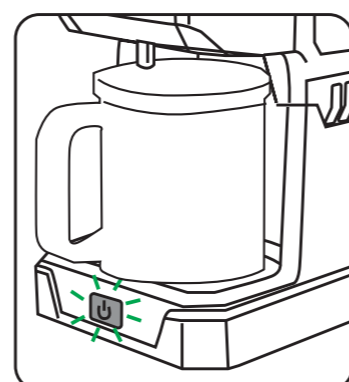
2. CONTROLS

On/Off

- Press the On/Off button to switch the tool on.



- The indicator lights up and shows: The brewing operation is beginning.



- The machine will switch off automatically when the brewing operation has ended.

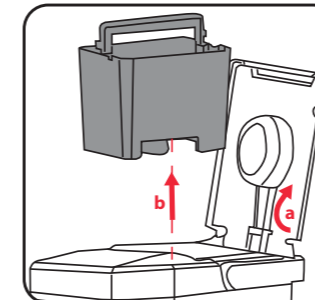
Note: If you would like to stop the brewing operation manually, press the On/Off button.

OPERATION

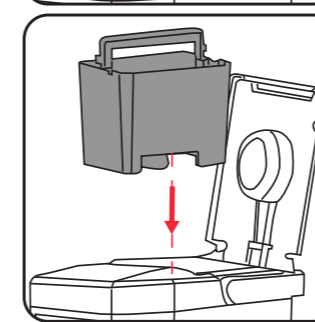
3. USAGE

WARNING! ENSURE THE TOOL IS SWITCHED OFF AND THE BATTERY IS REMOVED BEFORE PERFORMING ANY OF THE FOLLOWING TASKS.

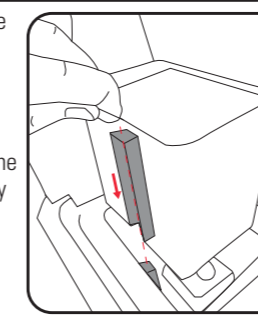
- Open the water tank lid (a) and remove the water tank (b).



- Pour the required amount of fresh cold water into the water tank, reinsert it and close the lid.



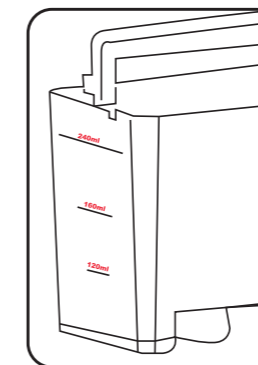
- Make sure the channel is aligned with the groove while placing the water tank back into the machine.



Note: The required water depends on the type and quantity of coffee used. The water tank has a maximum capacity of 240ml.

Note: Do not pour too much water into the water tank; surplus water will escape through the overflow.

Note: Follow the guideline on the water tank to measure the quantity of water in it.

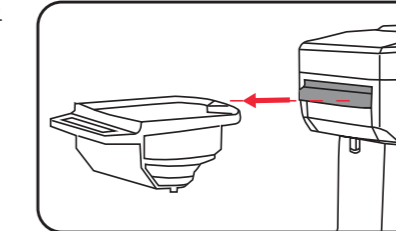


Type of Coffee	Recommended quantity of water
Ground Coffee (approx. 6g)	160ml
Coffee Pad (60mm)	120ml

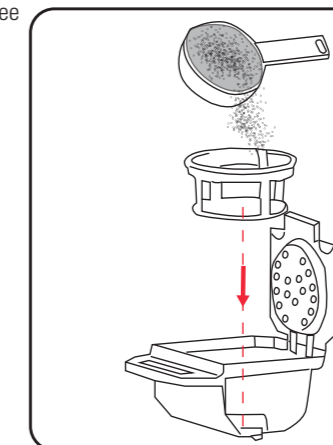
Note: To remove possible residues from the machine, pour 240ml of fresh water into the water tank. Rinse the machine's pipes by starting the brewing operation (see "using the coffee machine") without any coffee/filter/coffee pad in the filter holder and coffee pad holder. Repeat this process at least twice.

Using the Ground Coffee Holder

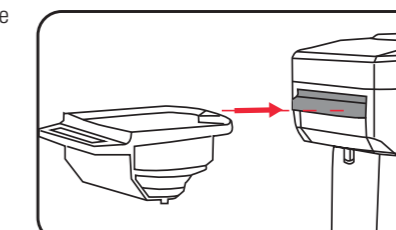
- Remove the filter holder.



- Fill one spoonful of ground coffee (approx. 6g) into the ground coffee holder. Insert the filter in the filter holder.



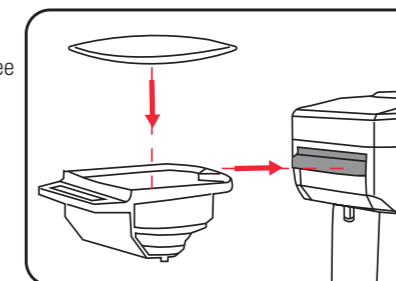
- Fit the filter back into the holder cover.



Note: Only coffee grounds should be used in the coffee ground filter.

Using the Coffee Pad Holder

- Remove the coffee pad holder, place the coffee pad and attach the coffee pad holder back to the machine.



Note: Do not use a torn coffee pad and do not place more than one pad in the coffee pad holder.

Note: The coffee pad holder can also be used to dispense hot water for making tea or cup noodles.

WARNING! DO NOT PLACE HANDS DIRECTLY UNDER THE HOT WATER AS THIS CAN LEAD TO A SCALDING OR INJURY.

WARNING! DO NOT REMOVE COFFEE MUG DURING BREWING COFFEE. THE HOT WATER/STEAM MAY CAUSE BURNS IN CASE OF CONTACT.

Using the Coffee Machine

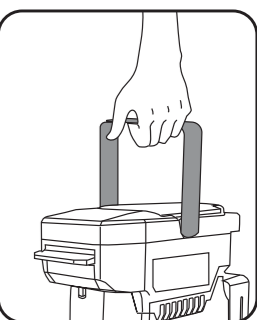
- Fill the water tank with the right amount of water as suggested.
- Fill the coffee ground holder with coffee/ coffee pad and fit the holder back to the machine.
- Press the on/off button to fresh brew your coffee. The indicator lights up and shows: The brewing operation is beginning
- The machine will switch off automatically when the brewing operation has ended.
- Take the coffee cup from the cup stand in order to enjoy your coffee.

Note: If you don't want to use the coffee machine again, press the release button and take out the battery.

Note: Cover the coffee mug with the lid provided to keep your coffee hot and protect it from dust entering.

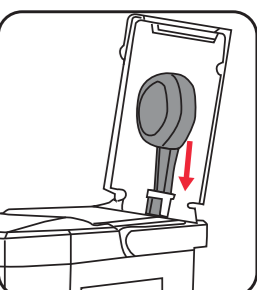


Note: Use the carry-handle when you carry the machine. When you fold in the handle, take care not to catch your fingers.

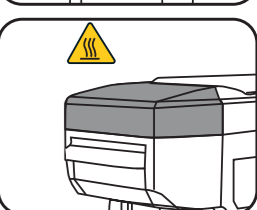


Caution: Make sure the machine is switched off before carrying the machine.

Note: The supplied spoon can be stored in the water tank lid at the rear. For storage purposes, push the end of the spoon into the holder.



Caution: The heating element surface is subjected to residual heat after use



5 YEAR
REPLACEMENT WARRANTY