



18V LITHIUM ION

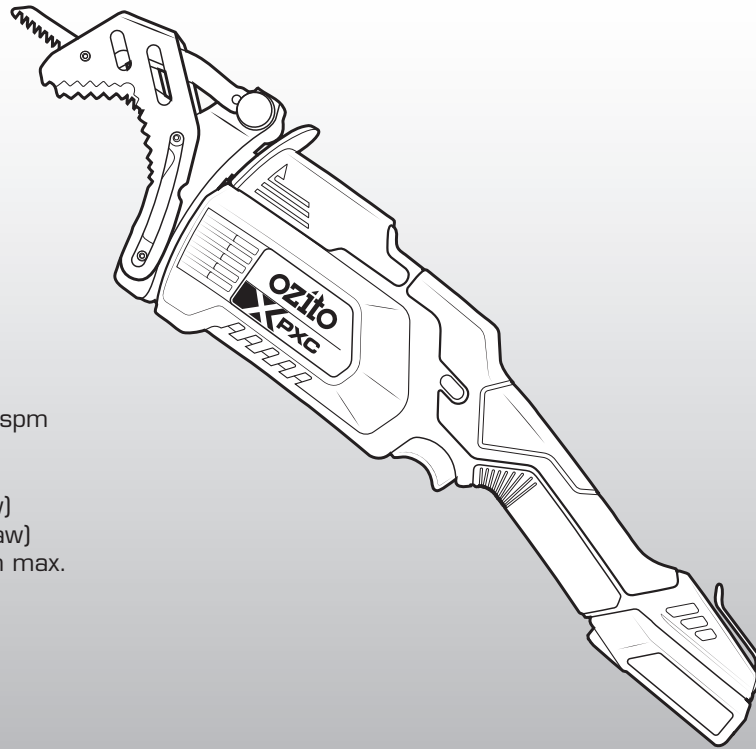
CORDLESS PRUNING SAW

INSTRUCTION MANUAL

SPECIFICATIONS

Input:	18V
No Load Speed:	0-2600spm
Stroke Length:	20mm
Cutting Diameter:	80mm max. (with clamping jaw) 100mm max. (w/o clamping jaw)
Saw Blade Length:	150mm max.
Weight:	1.3kg

ozito.com.au



STANDARD EQUIPMENT



Cordless Pruning Saw



150mm Wood Cutting Blade

5 YEAR
REPLACEMENT WARRANTY

PXPRSS-018

WARRANTY

IN ORDER TO MAKE A CLAIM UNDER THIS WARRANTY YOU MUST RETURN THE PRODUCT TO YOUR NEAREST BUNNINGS WAREHOUSE WITH YOUR BUNNINGS REGISTER RECEIPT. PRIOR TO RETURNING YOUR PRODUCT FOR WARRANTY PLEASE TELEPHONE OUR CUSTOMER SERVICE HELPLINE:

Australia 1800 069 486
New Zealand 0508 069 486

TO ENSURE A SPEEDY RESPONSE PLEASE HAVE THE MODEL NUMBER AND DATE OF PURCHASE AVAILABLE. A CUSTOMER SERVICE REPRESENTATIVE WILL TAKE YOUR CALL AND ANSWER ANY QUESTIONS YOU MAY HAVE RELATING TO THE WARRANTY POLICY OR PROCEDURE.

WARNING

The following actions will result in the warranty being void.

- If the tool has been operated on a supply voltage other than that specified on the tool.
- If the tool shows signs of damage or defects caused by or resulting from abuse, accidents or alterations.
- Failure to perform maintenance as set out within the instruction manual.
- If the tool is disassembled or tampered with in any way.
- Professional, industrial or high frequency use.

The benefits provided under this warranty are in addition to other rights and remedies which are available to you at law.

Our goods come with guarantees that cannot be excluded at law. You are entitled to a replacement or refund for a major failure and for compensation for any other reasonably foreseeable loss or damage. You are also entitled to have the goods repaired or replaced if the goods fail to be of acceptable quality and the failure does not amount to a major failure.

Generally you will be responsible for all costs associated with a claim under this warranty, however, where you have suffered any additional direct loss as a result of a defective product you may be able to claim such expenses by contacting our customer service helpline above.

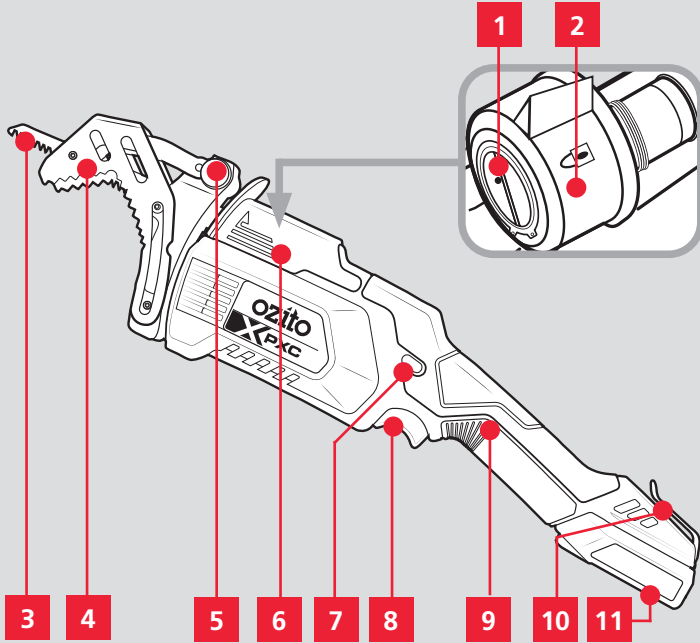
5 YEAR REPLACEMENT WARRANTY

Your Product is guaranteed for a period of 60 months from the original date of purchase and is intended for DIY (Do It Yourself) use only. If a product is defective it will be replaced in accordance with the terms of this warranty. **Lithium Ion batteries and chargers are covered by a 36 month warranty** and are excluded from the warranty extension. Warranty excludes consumable parts.

KNOW YOUR PRODUCT

CORDLESS PRUNING SAW

- | | |
|---------------------|---------------------------|
| 1. Blade Holder | 7. Safety Switch |
| 2. Locking Sleeve | 8. Variable Speed Trigger |
| 3. Blade | 9. Sure Grip Handle |
| 4. Clamping Jaw | 10. Belt Clip |
| 5. Clamp Lock | 11. Battery Seating |
| 6. Protective Cover | |



BATTERY & CHARGER

This tool is compatible with all batteries and chargers from the Ozito PXC range.

ONLINE MANUAL

Scan this QR Code with your mobile device to take you to the online manual.



SETUP & PREPARATION

1. SAW BLADE

WARNING! ENSURE THE PRUNING SAW IS SWITCHED OFF AND THE BATTERY IS REMOVED BEFORE PERFORMING ANY OF THE FOLLOWING TASKS.

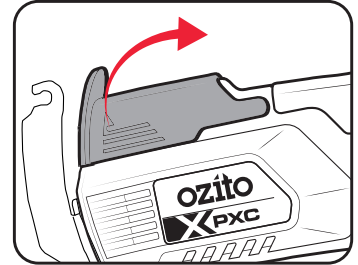
WARNING! DO NOT HANDLE BLADES WITHOUT GLOVES AS THEY ARE SHARP AND CAN BECOME HOT AFTER USE, POTENTIALLY CAUSING PERSONAL INJURY.

WARNING! A MAXIMUM LENGTH OF 150MM (6") BLADES SHOULD BE USED WITH THIS MACHINE.

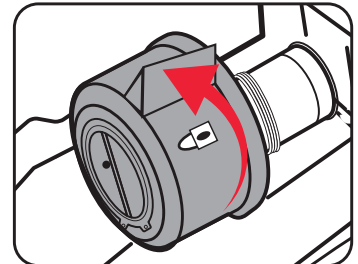
Installing and Removing a Blade

The pruning saw can be fitted with standard reciprocating saw blades, therefore can be used to cut various materials. The included blade is for timber only.

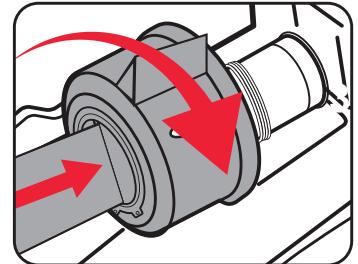
1. Press both sides of the protective cover and open it.



2. Rotate and hold the blade holder clockwise.



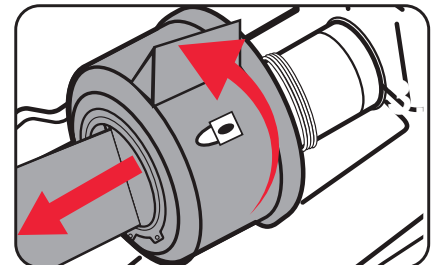
3. Insert the blade fully into the blade holder then release the blade holder.



Note: The blade holder will snap back to lock the blade in the holder.

4. Ensure the blade is secure by gently pulling on the blade.

5. To remove the blade, rotate and hold the blade holder clockwise, then pull out the blade.



6. Carefully close the protective cover.

WARNING! ALWAYS ENSURE THE BLADE IS REMOVED WHEN NOT IN USE.

5 YEAR
REPLACEMENT WARRANTY

2. CLAMPING JAW

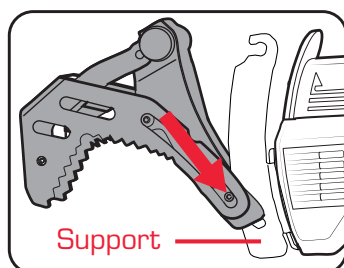
WARNING! ENSURE THE PRUNING SAW IS SWITCHED OFF AND THE BATTERY IS REMOVED BEFORE PERFORMING ANY OF THE FOLLOWING TASKS.

Installing and Removing the Clamping Jaw

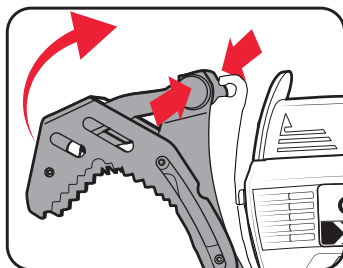
The clamping jaw allows branches to be gripped up to Ø80mm, providing cutting of unsupported branches easier. When cutting wider branches or timber, the clamping jaw can be removed and the pruning saw can be used as a standard reciprocating saw.

Note: For convenience and ease of use the clamping jaw can be removed and fitted with a blade fitted to the pruning saw.

1. First, align then slide the clamping jaw onto the support.

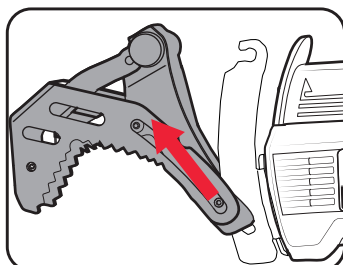
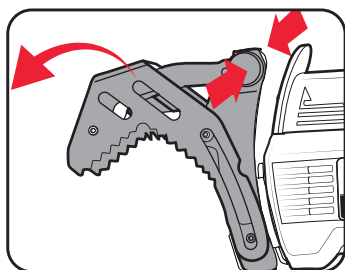


2. Slide the clamping jaw into place while pressing the clamp lock on both sides of the clamping jaw. When in position release the clamp lock to hold it in place.



Note: The clamp lock is spring loaded so will snap back to lock the clamping jaw to the support when released.

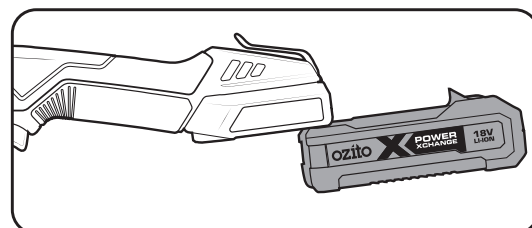
3. To remove the clamping jaw, press and hold the clamp lock as you pull the clamping jaw out then up away from the support.



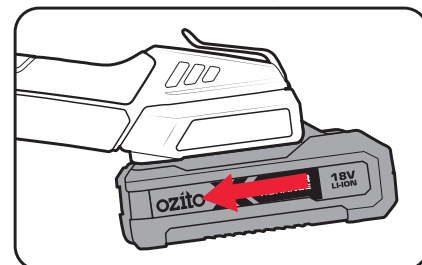
3. BATTERY

Installing and Removing the Battery

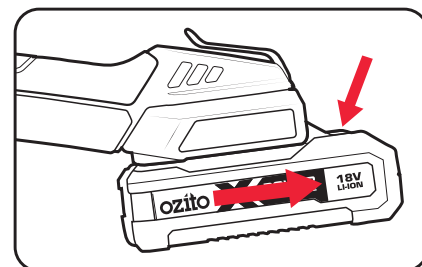
1. Align the ribs of the battery with the recess at the back of the handle.



2. Slide the battery in so that it clicks into place.



3. To remove, press and hold the battery release tab to release the battery, then slide the battery out.



WARNING! ALWAYS ENSURE THE BATTERY IS REMOVED WHEN NOT IN USE.

Run Time

The operating time of the PXC battery (the number of cuts that can be completed with a single battery charge) is largely dependent on the material, battery charge, blade condition and the rate of work.

Frequently turning the equipment on and off while pruning will also reduce the amount of operating time. If the operating time of the PXC battery is still unsatisfactory in spite of the above measures, you can remedy the problem by using PXC battery with a larger capacity (Ah).

4. USING THE PRUNING SAW

WARNING! ALWAYS WEAR STURDY, NON-SLIP FOOTWEAR, LONG TROUSERS, HEARING PROTECTION, SAFETY GLASSES AND PROTECTIVE GLOVES. NEVER USE THE EQUIPMENT BAREFOOT OR IN SANDALS.

WARNING! KEEP HANDS AWAY FROM THE BLADE AND THE PROTECTIVE COVER DURING OPERATION.

WARNING! NEVER REACH UNDER THE WORKPIECE WHEN MAKING A CUT, RISK OF SERIOUS INJURY.

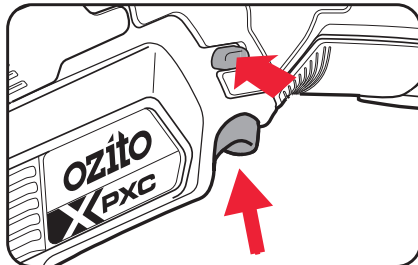
Proper Use

The Pruning Saw is supplied with a 150mm blade suitable for cutting wood, and can also be used to cut other materials such as metal and PVC pipe using the correct blade. Reciprocating saw blades up to 150mm long should only be used. The equipment is intended for private use i.e. for use in home and gardening environments.

Always hold the pruning saw firmly and only use light pressure while cutting, let the machine do the cutting, forcing the pruning saw can result in high vibration and there is a chance of pull-in or kick-back.

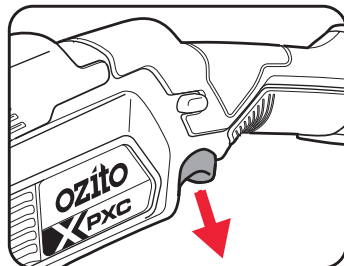
Switch the Pruning Saw On and Off

1. Push the safety switch in from either side and then squeeze the variable speed trigger to start. Motor will start after a short delay.



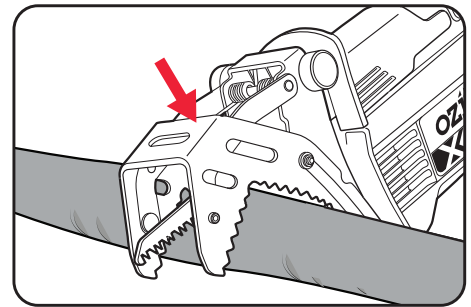
Note: Control the speed by adjusting the amount of pressure applied to the variable speed trigger.

2. Release the variable speed trigger to stop the pruning saw.



Cutting a Branch using the Clamping Jaw

1. Ensure the blade and the clamping jaw is secured correctly and hold the saw firmly.
2. Place the branch in between the clamping jaws and then lower to perform the cut.

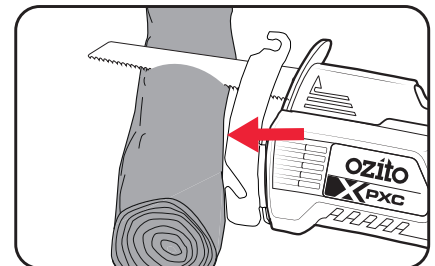


Note: The clamping jaw helps to guide the saw when cutting round branches up to Ø80mm.

Cutting without using the Clamping Jaw

When cutting thicker branches (up to Ø100mm) or sawing wood the clamping jaws can be removed to prevent them getting in the way of the cut.

1. Position the pruning saw support onto the material to be cut for stability and then perform the cut holding the saw firmly.



Note: Do not apply excessive pressure, allow the blade to do the work.

WARNING! DO NOT ALLOW THE PRUNING SAW TO BOUNCE. IF THE SUPPORT IS HELD AWAY FROM THE WORK PIECE DURING OPERATING, STRONG VIBRATION AND/OR TWISTING MAY OCCUR CAUSING THE BLADE TO SNAP DANGEROUSLY.

MAINTENANCE



WARNING! ENSURE THE MACHINE IS SWITCHED OFF AND THE BATTERY IS REMOVED BEFORE PERFORMING ANY OF THE FOLLOWING TASKS.

Cleaning

- Keep air intake clean and air vents free of debris to avoid overheating the motor.
- After each use, blow air through the pruning saw housing to ensure it is free from all dust, dirt, etc. Build up of dust or dirt particles may cause the pruning saw to overheat and shorten the life of the machine.
- If the enclosure of the pruning saw requires cleaning do not use solvents but a moist soft cloth or soft brush only.
- Never allow any liquid to get inside the pruning saw, never immerse any part of the machine into liquid or clean the pruning saw with running water, particularly with high-pressure water.

Storage

- When not in use, the machine should be stored in a dry, frost free location, keep out of children's reach.
- Store the equipment and its accessories in a dark and dry place at above freezing temperature. The ideal storage temperature is between 5 and 30°C.
- Remove the battery and blade from the pruning saw when in storage.
- Allow the motor to cool before you put the equipment in an enclosed area.



WARNING! STORE THE PRUNING SAW IN A SAFE AND DRY PLACE OUT OF THE REACH OF CHILDREN.

Note: Ozito Industries will not be responsible for any damage or injuries caused by the repair of the Pruning Saw by an unauthorised person or by mishandling of the Pruning saw. This machine is designed for DIY use - use in commercial or industrial environments will void the warranty.

DESCRIPTION OF SYMBOLS

V	Volts	Hz	Hertz
a.c./~	Alternating Current	W	Watts
/min	Revolutions or reciprocations per minute	n₀	No load speed
dc/---	Direct current	Ø	Diameter
mA	Milliamperes	Ah	Amp hour
spm	Strokes per minute	mm	Millimetres
	Warning		Keep hands away from blades
	Regulatory Compliance Mark (RCM)		Do not operate in rain or leave the pruner outdoors while raining
	Wear hearing, eye and breathing protection		Wear protective gloves
	Read Instruction Manual to reduce the risk of injury		
	Keep Bystanders away. Do not operate whilst people especially children or pets are in the area		

CARING FOR THE ENVIRONMENT



Power tools and garden machinery that are no longer usable should not be disposed of with household waste but in an environmentally friendly way. Please recycle where facilities exist. Check with your local council authority for recycling advice.



Recycling packaging reduces the need for landfill and raw materials. Reuse of recycled material decreases pollution in the environment. Please recycle packaging where facilities exist. Check with your local council authority for recycling advice.

SPARE PARTS

Spare parts can be ordered from the Special Orders Desk at your local Bunnings Warehouse.


For further information, or any parts not listed here, visit www.ozito.com.au or contact Ozito Customer Service:

Australia 1800 069 486

New Zealand 0508 069 486

E-mail: enquiries@ozito.com.au

ELECTRICAL SAFETY

 **WARNING!** When using electric machines, basic safety precautions, including the following, should always be followed to reduce risk of fire, electric shock, personal injury and material damage.

-Read the whole manual carefully and make sure you know how to switch the machine off in an emergency, before operating the machine. Save these instructions and other documents supplied with this machine for future reference.

-This appliance is not intended for use by persons (including children) with reduced physical, sensory or mental capabilities, or lack of experience and knowledge, unless they have been given supervision or instruction concerning use of the appliance by a person responsible for their safety.

Children should be supervised to ensure that they do not play with the appliance.

-This appliance is compatible and only to be used with all batteries & chargers from the Ozito PXC range. Refer to the PXC battery and charger manuals for information regarding charging, use and storage.


-Remove the batteries from the appliance before being charged.

-Do not combine different types of batteries or new and used batteries.

-If the appliance is to be stored unused for a long period, the batteries should be removed.

-Do not use modified or damaged batteries.

GENERAL MACHINE SAFETY WARNINGS

 **WARNING!** Read all safety warnings, instructions, illustrations and specifications provided with this machine. Failure to follow all instructions listed below may result in electric shock, fire and/or serious injury.

Save all warnings and instructions for future reference.

The term "machine" in the warnings refers to your mains-operated (corded) machine or battery-operated (cordless) machine.

1) Work area safety

- Keep work area clean and well lit. Cluttered or dark areas invite accidents.
- Do not operate machines in explosive atmospheres, such as in the presence of flammable liquids, gases or dust. Machines create sparks which may ignite the dust or fumes.
- Keep children and bystanders away while operating a machine. Distractions can cause you to lose control.

2) Electrical safety

- Machine plugs must match the outlet. Never modify the plug in any way. Do not use any adapter plugs with earthed (grounded) machines. Unmodified plugs and matching outlets will reduce risk of electric shock.
- Avoid body contact with earthed or grounded surfaces, such as pipes, radiators, ranges and refrigerators. There is an increased risk of electric shock if your body is earthed or grounded.
- Do not expose machines to rain or wet conditions. Water entering a machine will increase the risk of electric shock.
- Do not abuse the cord. Never use the cord for carrying, pulling or unplugging the machine. Keep cord away from heat, oil, sharp edges or moving parts. Damaged or entangled cords increase the risk of electric shock.
- When operating a machine outdoors, use an extension cord suitable for outdoor use. Use of a cord suitable for outdoor use reduces the risk of electric shock.
- If operating a machine in a damp location is unavoidable, use a residual current device (RCD) protected supply. Use of an RCD reduces the risk of electric shock.

3) Personal safety

- Stay alert, watch what you are doing and use common sense when operating a machine. Do not use a machine while you are tired or under the influence of drugs, alcohol or medication. A moment of inattention while operating machines may result in serious personal injury.
- Use personal protective equipment. Always wear eye protection. Protective equipment such as a dust mask, non-skid safety shoes, hard hat or hearing protection used for appropriate conditions will reduce personal injuries.
- Prevent unintentional starting. Ensure the switch is in the off-position before connecting to power source and/or battery pack, picking up or carrying the machine. Carrying machines with your finger on the switch or energising machines that have the switch on invites accidents.
- Remove any adjusting key or wrench before turning the machine on. A wrench or a key left attached to a rotating part of the machine may result in personal injury.
- Do not overreach. Keep proper footing and balance at all times. This enables better control of the machine in unexpected situations.
- Dress properly. Do not wear loose clothing or jewellery. Keep your hair and clothing away from moving parts. Loose clothes, jewellery or long hair can be caught in moving parts.
- If devices are provided for the connection of dust extraction and collection facilities, ensure these are connected and properly used. Use of dust collection can reduce dust-related hazards.
- Do not let familiarity gained from frequent use of machines allow you to become complacent and ignore machine safety principles. A careless action can cause severe injury within a fraction of a second.

4) Machine use and care

- Do not force the machine. Use the correct machine for your application. The correct machine will do the job better and safer at the rate for which it was designed.
- Do not use the machine if the switch does not turn it on and off. Any machine that cannot be controlled with the switch is dangerous and must be repaired.
- Disconnect the plug from the power source and/or remove the battery pack, if detachable, from the machine before making any adjustments, changing accessories, or storing machines. Such preventive safety measures reduce the risk of starting the machine accidentally.
- Store idle machines out of the reach of children and do not allow persons unfamiliar with the machine or these instructions to operate the machine. Machines are dangerous in the hands of untrained users.
- Maintain machines and accessories. Check for misalignment or binding of moving parts, breakage of parts and any other condition that may affect the machine's operation. If damaged, have the machine repaired before use. Many accidents are caused by poorly maintained machines.
- Keep cutting machines sharp and clean. Properly maintained cutting machines with sharp cutting edges are less likely to bind and are easier to control.
- Use the machine, accessories and machine bits etc. in accordance with these instructions, taking into account the working conditions and the work to be performed. Use of the machine for operations different from those intended could result in a hazardous situation.
- Keep handles and grasping surfaces dry, clean and free from oil and grease. Slippery handles and grasping surfaces do not allow for safe handling and control of the machine in unexpected situations.


5) Battery machine use and care

- Recharge only with the charger specified by the manufacturer. A charger that is suitable for one type of battery pack may create a risk of fire when used with another battery pack.
- Use machines only with specifically designated battery packs. Use of any other battery packs may create a risk of injury and fire.
- When battery pack is not in use, keep it away from other metal objects, like paper clips, coins, keys, nails, screws or other small metal objects, that can make a connection from one terminal to another. Shorting the battery terminals together may cause burns or a fire.
- Under abusive conditions, liquid may be ejected from the battery; avoid contact. If contact accidentally occurs, flush with water. If liquid contacts eyes, additionally seek medical help. Liquid ejected from the battery may cause irritation or burns.
- Do not use a battery pack or machine that is damaged or modified. Damaged or modified batteries may exhibit unpredictable behaviour resulting in fire, explosion or risk of injury.
- Do not expose a battery pack or machine to fire or excessive temperature. Exposure to fire or temperature above 130 °C may cause explosion.
- Follow all charging instructions and do not charge the battery pack or machine outside the temperature range specified in the instructions. Charging improperly or at temperatures outside the specified range may damage the battery and increase the risk of fire.

6) Service

- Have your machine serviced by a qualified repair person using only identical replacement parts. This will ensure that the safety of the machine is maintained.
- Never service damaged battery packs. Service of battery packs should only be performed by the manufacturer or authorized service providers.


PRUNING SAW SAFETY WARNINGS

 **WARNING!** This appliance is not intended for use by persons (including children) with reduced physical, sensory or mental capabilities, or lack of experience and knowledge, unless they have been given supervision or instruction concerning use of the appliance by a person responsible for their safety.

Young children should be supervised to ensure that they do not play with the appliance.

- Hold the machine by insulated gripping surfaces, when performing an operation where the cutting accessory may contact hidden wiring. Cutting accessory contacting a "live" wire may make exposed metal parts of the machine "live" and could give the operator an electric shock.
- Use clamps or another practical way to secure and support the workpiece to a stable platform. Holding the workpiece by hand or against your body leaves it unstable and may lead to loss of control.
- Keep all parts of the body away from the saw blade when the saw is operating. Before you start the pruning saw, make sure the saw blade is not contacting anything. A moment of inattention while operating saws may cause entanglement of your clothing or body with the saw blade.
- Wear safety glasses and hearing protection. Further protective equipment for head, hands, legs and feet is recommended. Adequate protective clothing will reduce personal injury by flying debris or accidental contact with the saw blade.
- Do not operate a pruning saw in a tree. Operation of a pruning saw while up in a tree may result in personal injury.
- Always keep proper footing and operate the pruning saw only when standing on fixed, secure and level surface. Slippery or unstable surfaces such as ladders may cause a loss of balance or control of the saw.
- When cutting a limb that is under tension be alert for spring back. When the tension in the wood fibres is released the spring loaded limb may strike the operator and/or throw the pruning saw out of control.

- Use extreme caution when cutting brush and saplings. The slender material may catch the saw blade and be whipped toward you or pull you off balance.
- Keep handles dry, clean, and free from oil and grease. Greasy, oily handles are slippery causing loss of control.
- Do not touch the blade or the work piece immediately after operation; they may be extremely hot and could potentially burn your skin.
- If you withdraw the blade from the work piece during operation, a strong reaction could be produced, which could cause the blade to snap or cause you to lose your grip and/or control of the saw. Always switch off the machine and wait until the blade has come to a complete stop before withdrawing the blade from the work piece.
- Maintain a firm grip, with thumbs and fingers encircling the pruning saw handles, with both hands on the saw and position your body and arm to allow you to resist kickback forces. Kickback forces can be controlled by the operator, if proper precautions are taken. Do not let go of the pruning saw.
- Do not overreach and do not cut above shoulder height. This helps prevent unintended tip contact and enables better control of the pruning saw in unexpected situations.
- Only use replacement blades specified by the manufacturer. Incorrect blades may cause blade breakage and/or kickback.
- Avoid using power tools and machines for long periods of time without breaks. Vibration from tools and machines can be transmitted into your hands and arms.

 **Danger!** Always remove the battery from the pruning saw:

- when the equipment is left unattended,
- when the equipment is being checked, cleaned, or having maintenance work done,
- or if the equipment vibrates abnormally.