

ozito

12V MINI AIR COMPRESSOR

250PSI

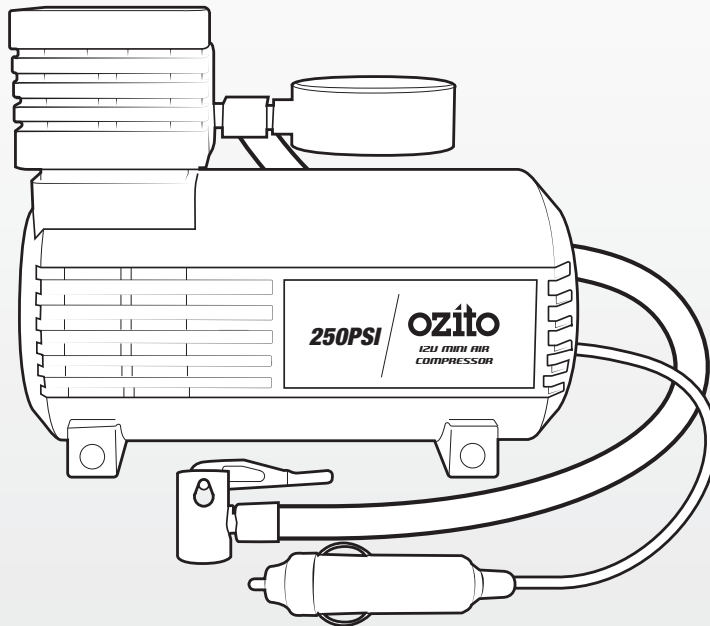
INSTRUCTION MANUAL

SPECIFICATIONS

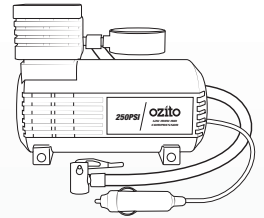
Voltage:	12V
Max. Current:	10A
Max. Flow Rate:	5L/min
Max. Pressure:	18bar (250psi)
Hose Length:	450mm
Weight:	0.68kg

ozito.com.au

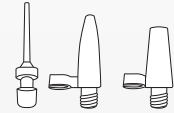
3 YEAR
REPLACEMENT
WARRANTY*



STANDARD EQUIPMENT



12V Mini Air Compressor



3 x Inflation Nozzles

OAC-1218

WARRANTY

IN ORDER TO MAKE A CLAIM UNDER THIS WARRANTY YOU MUST RETURN THE PRODUCT TO YOUR NEAREST BUNNINGS WAREHOUSE WITH YOUR BUNNINGS REGISTER RECEIPT. PRIOR TO RETURNING YOUR PRODUCT FOR WARRANTY PLEASE TELEPHONE OUR CUSTOMER SERVICE HELPLINE:

Australia: 1800 069 486

New Zealand: 0508 069 486

TO ENSURE A SPEEDY RESPONSE PLEASE HAVE THE MODEL NUMBER AND DATE OF PURCHASE AVAILABLE. A CUSTOMER SERVICE REPRESENTATIVE WILL TAKE YOUR CALL AND ANSWER ANY QUESTIONS YOU MAY HAVE RELATING TO THE WARRANTY POLICY OR PROCEDURE.

The benefits provided under this warranty are in addition to other rights and remedies which are available to you at law.

Our goods come with guarantees that cannot be excluded at law. You are entitled to a replacement or refund for a major failure and for compensation for any other reasonably foreseeable loss or damage. You are also entitled to have the goods repaired or replaced if the goods fail to be of acceptable quality and the failure does not amount to a major failure.

Generally you will be responsible for all costs associated with a claim under this warranty, however, where you have suffered any additional direct loss as a result of a defective product you may be able to claim such expenses by contacting our customer service helpline above.

3 YEAR REPLACEMENT WARRANTY*

Your product is guaranteed for a period of **36 months from the original date of purchase**. If a product is defective it will be replaced in accordance with the terms of this warranty. Warranty excludes consumable parts, for example: valve adapters and accessories.

*This product is intended for DIY use only and replacement warranty covers domestic use.

WARNING

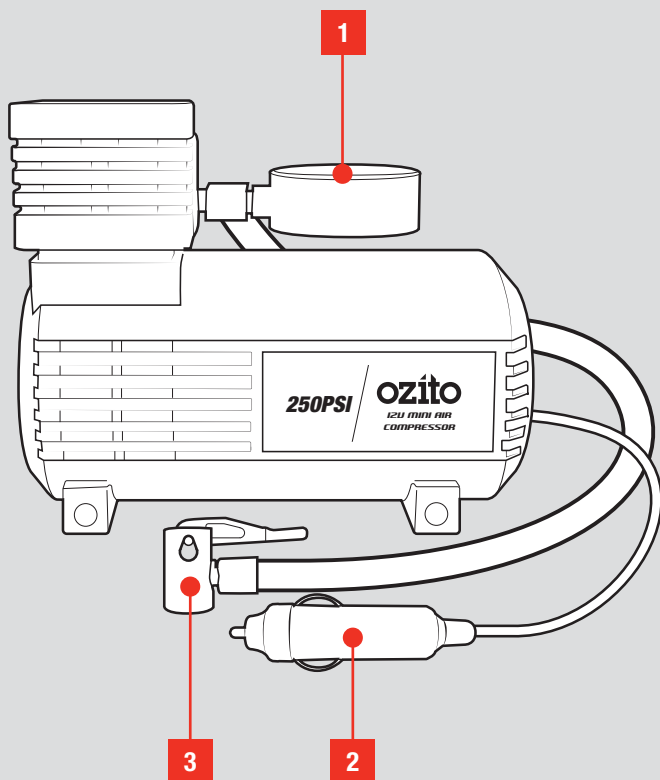
The following actions will result in the warranty being void.

- If the tool has been operated on a supply voltage other than that specified on the tool.
- If the tool shows signs of damage or defects caused by or resulting from abuse, accidents or alterations.
- Failure to perform maintenance as set out within the instruction manual.
- If the tool is disassembled or tampered with in any way.
- Professional, industrial or high frequency use.

KNOW YOUR PRODUCT

12V MINI AIR COMPRESSOR

1. Pressure Gauge
2. 12V DC Car Plug
3. Quick Release Valve



ONLINE MANUAL

Scan this QR Code with your mobile device to take you to the online manual.

3 YEAR REPLACEMENT WARRANTY*



SETUP & PREPARATION

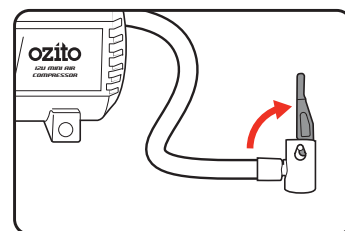
1. ASSEMBLY



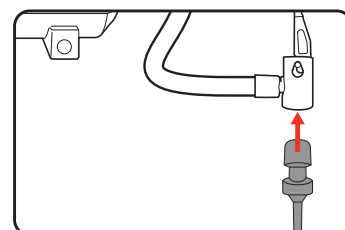
WARNING! ENSURE THE TOOL IS TURNED OFF AND DISCONNECTED FROM THE POWER SUPPLY BEFORE PERFORMING ANY OF THE FOLLOWING OPERATIONS.

Attaching Nozzles

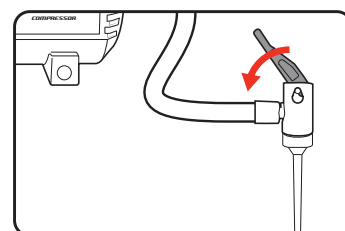
1. Flip open the clip on the quick release valve.



2. Push the desired nozzle into the quick release valve.

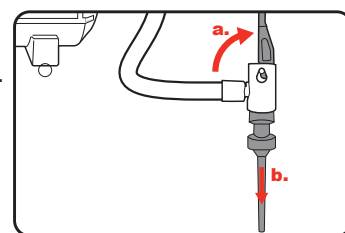


3. Flip the clip on the valve back down to secure the adaptor in place.



Note: The quick release valve can also be used directly on the object you want to inflate, depending on the type of valve present.

4. To remove a nozzle, raise the clip of the quick release valve and pull the nozzle out.



OPERATION

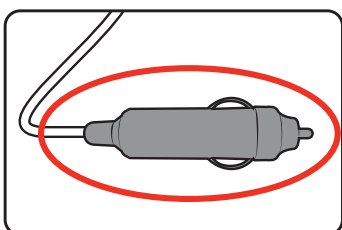
2. CONTROLS

WARNING! KEEP THE VEHICLE ENGINE RUNNING WHILE THE AIR COMPRESSOR IS IN USE TO AVOID DISCHARGING THE VEHICLE BATTERY ENTIRELY.

WARNING! ENSURE THE POWER CORD IS UNCOILED & FULLY EXTENDED TO AVOID OVERHEATING THE POWER CORD. ENSURE THAT IT DOES NOT GET TANGLED OR CAUGHT IN ANY ROTATING PARTS WITHIN THE ENGINE COMPARTMENT OF THE VEHICLE.

Powering The Compressor

1. Insert the 12V plug into the DC port of your vehicle to start the compressor.



Note: The compressor is not equipped with the on/off switch, it will turn on once the 12V plug is inserted into the DC port of the vehicle.

2. Disconnect the plug to stop the compressor.

WARNING! ONLY USE THE COMPRESSOR IN WELL VENTILATED AREAS.

WARNING! ENSURE THAT THE COMPRESSOR IS SITTING ON A STEADY, LEVEL SURFACE DURING USE.

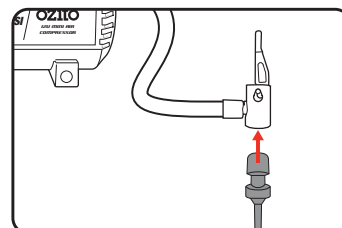
WARNING! NEVER POINT THE OUTLET NOZZLE TOWARDS ANY PART OF YOUR BODY OR ANOTHER PERSON.

3. INFLATING OBJECTS

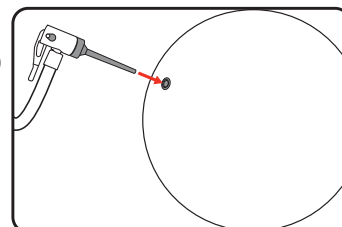
WARNING! COMPRESSED AIR CAN BE DANGEROUS. NEVER POINT THE OUTLET NOZZLE TOWARDS ANY PART OF YOUR BODY OR AT ANOTHER PERSON.

WARNING! AVOID INFLATING OBJECTS ABOVE THE RECOMMENDED INFLATION PRESSURE. THIS MAY LEAD TO DAMAGE AND/OR INJURIES.

1. Attach a nozzle to the quick release valve if required.

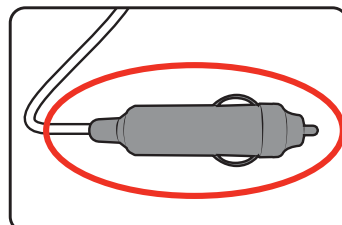


2. Attach the quick release valve or insert the nozzle into the valve on the object to be inflated.

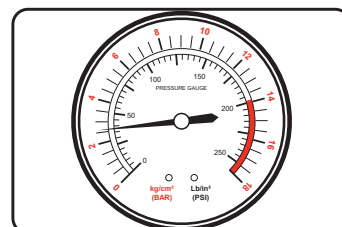


WARNING! MAINTAIN A FIRM HOLD ON THE AIR HOSE VALVE OR ENSURE THAT THE NOZZLE/VALVE IS SECURELY ATTACHED OTHERWISE THE HOSE MAY BLOW OUT AND WHIP ABOUT.

3. Plug the 12V Car plug into the vehicle port.



4. Monitor the pressure gauge to avoid overinflating the object.



5. When the object is suitably inflated, unplug the 12V Car plug to stop the compressor.

WARNING! ALLOW AIR COMPRESSOR TO COOL FOR 20 MINUTES AFTER 10 MINUTES OF CONTINUOUS OPERATION.

WARNING! DO NOT LEAVE UNATTENDED WHILST THE TOOL IS IN OPERATION.

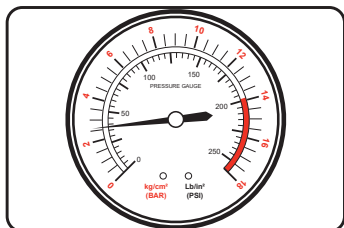
Note: You will need to momentarily halt inflation/deflation to obtain accurate pressure readings as air flowing in the hose may throw off the readings.

MAINTENANCE

4. CHECKING THE AIR PRESSURE

WARNING! ALWAYS USE A CALIBRATED PRESSURE GAUGE TO CHECK THE PRESSURE ON SAFETY CRITICAL OBJECTS

1. Connect the quick release valve to the object you'd like to measure.
2. Check the pressure gauge for the air pressure reading of the object.



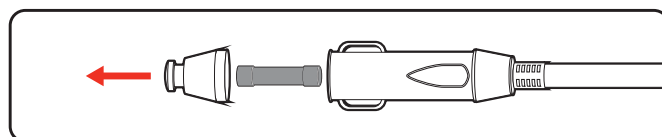
Note: There is no need to switch on the compressor for this function.

5. REPLACING THE FUSE

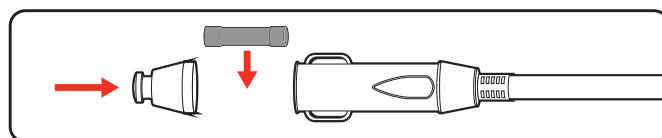
WARNING! BEFORE CLEANING THE APPLIANCE OR CARRYING OUT ANY MAINTENANCE PROCEDURE, MAKE SURE THAT IT IS DISCONNECTED FROM THE POWER SUPPLY TO PREVENT ACCIDENTAL STARTING.

The 12V socket is fitted with a 10A fuse to protect the air compressor. If the compressor has stopped working, the fuse may need to be replaced.

1. Unscrew the top of the 12V socket to expose the fuse.



2. Replace the 10A fuse and screw the top back onto the 12V socket.



6. APPLIANCE CARE



WARNING! BEFORE CLEANING THE APPLIANCE OR CARRYING OUT ANY MAINTENANCE PROCEDURE, MAKE SURE THAT IT IS DISCONNECTED FROM THE POWER SUPPLY TO PREVENT ACCIDENTAL STARTING.

Cleaning

1. We recommend that you clean the appliance immediately after you use it.
2. Keep the safety devices free of dirt and dust as much as possible. Wipe the equipment with a clean cloth.
3. Clean the appliance regularly with a damp cloth and some soft soap. Do not use cleaning agents or solvents; these may be aggressive to the plastic parts in the appliance. Ensure that no water can get into the interior of the appliance.

Storage

Switch off the tool and make sure that it is secured in such a way that it cannot be started up again by any unauthorised person.

Store the tool in a dry location which is not accessible to unauthorised persons.

Supply Cords

If replacement of the supply cord is necessary, this has to be done by a certified electrician in order to avoid a safety hazard.

Note: Ozito Industries will not be responsible for any damage or injuries caused by the repair of the tool by an unauthorised person or by mishandling of the tool.

DESCRIPTION OF SYMBOLS

V	Volts	DC	Direct Current
A	Amperes	psi	Pounds per square inch
L/min	Litres per minute		Wear hearing protection
	Regulatory Compliance Mark (RCM)		Warning
	Read Instruction Manual		Warning! The equipment is remote-controlled & may start-up without warning.

CARING FOR THE ENVIRONMENT



Power tools that are no longer usable should not be disposed of with household waste but in an environmentally friendly way. Please recycle where facilities exist. Check with your local council authority for recycling advice.



Recycling packaging reduces the need for landfill and raw materials. Reuse of recycled material decreases pollution in the environment. Please recycle packaging where facilities exist. Check with your local council authority for recycling advice.

SPARE PARTS

Spare parts can be ordered from the Special Orders Desk at your local Bunnings Warehouse.

For further information, or any parts not listed here, visit www.ozito.com.au or contact Ozito Customer Service:

Australia 1800 069 486

New Zealand 0508 069 486

E-mail: enquiries@ozito.com.au



ELECTRICAL SAFETY



WARNING! When using mains-powered tools, basic safety precautions, including the following, should always be followed to reduce risk of fire, electric shock, personal injury and material damage. Read the whole manual carefully and make sure you know how to switch the tool off in an emergency, before operating the tool.

Save these instructions and other documents supplied with this tool for future reference.

The electric motor has been designed for 12V only. Always check that the power supply corresponds to the voltage on the rating plate.



GENERAL POWER TOOL SAFETY WARNINGS



WARNING! Read all safety warnings and all instructions. Failure to follow the warnings and instructions may result in electric shock, fire and/or serious injury.

Save all warnings and instructions for future reference. The term "power tool" in the warnings refers to your mains-operated (corded) power tool or battery-operated (cordless) power tool.

1. Work area safety

a. **Keep work area clean and well lit.** Cluttered or dark areas invite accidents.

b. **Do not operate power tools in explosive atmospheres, such as in the presence of flammable liquids, gases or dust.** Power tools create sparks which may ignite the dust or fumes.

c. **Keep children and bystanders away while operating a power tool.** Distractions can cause you to lose control.

2. Electrical safety

a. **Power tool plugs must match the outlet. Never modify the plug in any way. Do not use any adapter plugs with earthed (grounded) power tools.** Unmodified plugs and matching outlets will reduce risk of electric shock.

b. **Avoid body contact with earthed or grounded surfaces, such as pipes, radiators, ranges and refrigerators.** There is an increased risk of electric shock if your body is earthed or grounded.

c. **Do not expose power tools to rain or wet conditions.** Water entering a power tool will increase the risk of electric shock.

d. **Do not abuse the cord. Never use the cord for carrying, pulling or unplugging the power tool. Keep cord away from heat, oil, sharp edges or moving parts.** Damaged or entangled cords increase the risk of electric shock.

e. **When operating a power tool outdoors, use an extension cord suitable for outdoor use.** Use of a cord suitable for outdoor use reduces the risk of electric shock.

3. Personal safety

a. **Stay alert, watch what you are doing and use common sense when operating a power tool. Do not use a power tool while you are tired or under the influence of drugs, alcohol or medication.** A moment of inattention while operating power tools may result in serious personal injury.

b. **Use personal protective equipment. Always wear eye protection.** Protective equipment such as dust mask, non-skid safety shoes, hard hat, or hearing protection used for appropriate conditions will reduce personal injuries.

c. **Prevent unintentional starting. Ensure the switch is in the off-position before connecting to power source and/or battery pack, picking up or carrying the tool.** Carrying power tools with your finger on the switch or energising power tools that have the switch on invites accidents.

d. **Remove any adjusting key or wrench before turning the power tool on.** A wrench or a key left attached to a rotating part of the power tool may result in personal injury.

e. **Do not overreach. Keep proper footing and balance at all times.** This enables better control of the power tool in unexpected situations.

f. **Dress properly. Do not wear loose clothing or jewellery. Keep your hair, clothing and gloves away from moving parts.** Loose clothes, jewellery or long hair can be caught in moving parts.

g. **If devices are provided for the connection of dust extraction and collection facilities, ensure these are connected and properly used.** Use of dust collection can reduce dust-related hazards.

h. **Do not let familiarity gained from frequent use of tools allow you to become complacent and ignore tool safety principles.** A careless action can cause severe injury within a fraction of a second.

4. Power tool use and care

a. **Do not force the power tool. Use the correct power tool for your application.** The correct power tool will do the job better and safer at the rate for which it was designed.

b. **Do not use the power tool if the switch does not turn it on and off.** Any power tool that cannot be controlled with the switch is dangerous and must be repaired.

c. **Disconnect the plug from the power source and/or the battery pack from the power tool before making any adjustments, changing accessories, or storing power tools.** Such preventive safety measures reduce the risk of starting the power tool accidentally.

d. **Store idle power tools out of the reach of children and do not allow persons unfamiliar with the power tool or these instructions to operate the power tool.** Power tools are dangerous in the hands of untrained users.

e. **Maintain power tools.** Check for misalignment or binding of moving parts, breakage of parts and any other condition that may affect the power tool's operation. If damaged, have the power tool repaired before use. Many accidents are caused by poorly maintained power tools.

f. **Keep cutting tools sharp and clean.** Properly maintained cutting tools with sharp cutting edges are less likely to bind and are easier to control.

g. **Use the power tool, accessories and tool bits etc, in accordance with these instructions, taking into account the working conditions and the work to be performed.** Use of the power tool for operations different from those intended could result in a hazardous situation.

h. **Keep handles and grasping surfaces dry, clean and free from oil and grease.** Slippery handles and grasping surfaces do not allow for safe handling and control of the tool in unexpected situations.

5. Service

a. **Have your power tool serviced by a qualified repair person using only identical replacement parts.** This will ensure that the safety of the power tool is maintained.



AIR COMPRESSOR SAFETY WARNINGS



The appliance is not to be used by persons (including children) with reduced physical, sensory or mental capabilities, or lack of experience and knowledge, unless they have been given supervision or instruction.

Young children should be supervised to ensure that they do not play with the appliance.

WARNING! Before connecting a tool to a power source (mains switch power point receptacle, outlet, etc.) be sure that the voltage supply is the same as that specified on the nameplate of the tool. A power source with a voltage greater than that specified for the tool can result in serious injury to the user, as well as damage to the tool. If in doubt, do not plug in the tool. Using a power source with a voltage less than the nameplate rating is harmful to the motor.

This tool should only be used for its prescribed purpose: inflating bicycle tyres, pumping sports balls. Any other use is considered misuse. The user and not the manufacturer shall be liable for any damage or injury resulting from such cases of misuse.

- Do not place the hose end against any part of your body when turned on, as this may infuse air into your blood stream putting your health at serious risk.
- Do not make any alterations to this compressor. Only use the adaptors supplied with this product.
- Use this product only in accordance with operation instructions included in this manual.
- Allow air compressor to cool for 20 minutes after 10 minutes of continuous operation.
- If the compressor is making abnormal sounds or its temperature is quite high, turn off the power straight away and let it cool for at least 20 minutes before trying again.
- Improper use may result in damage of the air compressor.
- Do not leave unattended and operating. Keep out of reach of children.
- Put the air compressor in a dry place if it is not in use for an extended period of time.
- Keep the air compressor away from flammable liquid or gas. Do not allow the compressor to become wet.
- Never put the connector and adaptors into your mouth, ear or eye. They are not toys.

- Avoid inserting hands into the inlets/outlets of the air compressor while it is connected to power.
- Before using the air compressor, always inspect it visually. Do not use the compressor if it is cracked and/or damaged. If the compressor is damaged, contact Ozito customer service.
- Never work or perform maintenance on the compressor without first making sure it has been disconnected from the mains power.
- The electrical connection must always be made in a dry area. Make sure that electrical connections are protected from inundations.
- Protect the plug and the power cable from heat, oil or sharp edges.
- If damaged, the power cable must be replaced by a qualified electrician.
- Always operate the compressor in a well ventilated area. Do not smoke while spraying. Do not spray where sparks or flames are present. Keep the compressor as far away from the spray area as possible.
- The solvents trichloroethane and methylene chloride can chemically react with the aluminium used in some paint spray guns and form an explosion. If these solvents are used, ensure that only stainless steel spray equipment is connected. The compressor is not affected by the use of these solvents.
- Never directly inhale the compressed air produced by a compressor and do not use it for charging breathing tanks.
- Do not use welding equipment in close proximity to the compressor. Do not weld anything to the air tank of the compressor: this could dangerously weaken the tank and will void the warranty.
- Do not use the compressor outdoors when it is raining or on a wet surface; either situation could cause an electric shock.
- Never let the compressor come into contact with water or other liquids, as the appliance is live, this could cause electrocution or short-circuits. Never use the appliance with bare feet, wet hands or wet feet.
- The compressed air produced by the compressor cannot not be used for pharmaceutical, food or medical purposes or to fill the air bottles of scuba divers.
- Do not cover the air inlets on the compressor.
- Compressors and lines reach high temperatures during operation. Avoid contact! Risk of burns!
- Protect the air hose and cordset from damage. Inspect for weak or worn spots regularly and replace if necessary.