

# ozito

## 12V TWIN CYLINDER AIR COMPRESSOR

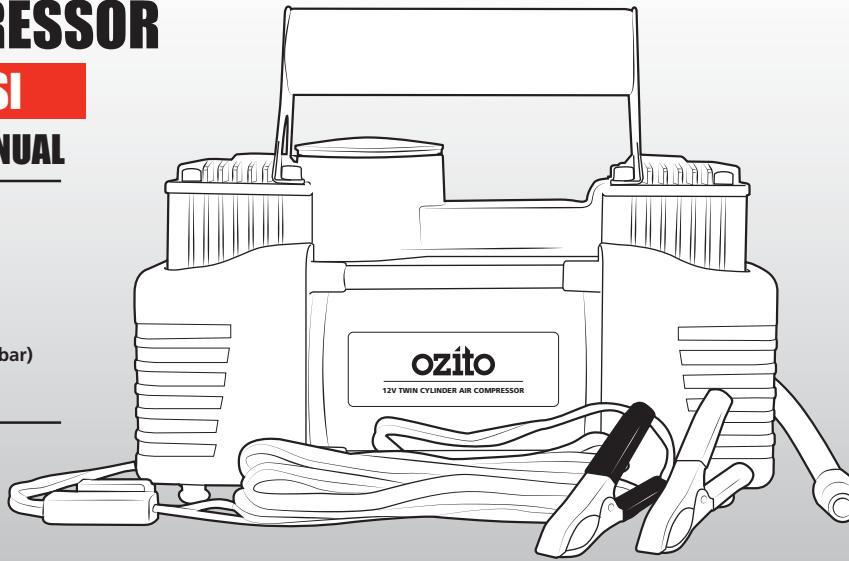
### 70L/MIN 145PSI

#### INSTRUCTION MANUAL

#### SPECIFICATIONS

Power:	276W
Input:	12V DC
Max. Current:	30A
S3:	25%
Flow Rate:	70L/min
Max. Pressure:	145psi (10bar)
Hose Length:	4m
Weight:	2.97kg

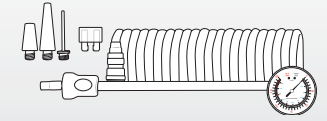
ozito.com.au



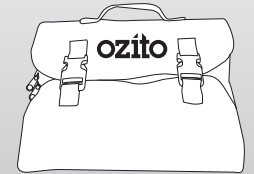
#### STANDARD EQUIPMENT



12V Twin Cylinder Air Compressor



3 x Inflation Nozzles, Replacement Fuse & Air Hose



Carry Bag

# 3 YEAR REPLACEMENT WARRANTY

OTAC-1570

## WARRANTY

IN ORDER TO MAKE A CLAIM UNDER THIS WARRANTY YOU MUST RETURN THE PRODUCT TO YOUR NEAREST BUNNINGS WAREHOUSE WITH YOUR BUNNINGS REGISTER RECEIPT. PRIOR TO RETURNING YOUR PRODUCT FOR WARRANTY PLEASE TELEPHONE OUR CUSTOMER SERVICE HELPLINE:

**Australia 1800 069 486**

**New Zealand 0508 069 486**

TO ENSURE A SPEEDY RESPONSE PLEASE HAVE THE MODEL NUMBER AND DATE OF PURCHASE AVAILABLE. A CUSTOMER SERVICE REPRESENTATIVE WILL TAKE YOUR CALL AND ANSWER ANY QUESTIONS YOU MAY HAVE RELATING TO THE WARRANTY POLICY OR PROCEDURE.

The benefits provided under this warranty are in addition to other rights and remedies which are available to you at law. Our goods come with guarantees that cannot be excluded at law. You are entitled to a replacement or refund for a major failure and for compensation for any other reasonably foreseeable loss or damage. You are also entitled to have the goods repaired or replaced if the goods fail to be of acceptable quality and the failure does not amount to a major failure.

Generally you will be responsible for all costs associated with a claim under this warranty, however, where you have suffered any additional direct loss as a result of a defective product you may be able to claim such expenses by contacting our customer service helpline above.

### 3 YEAR REPLACEMENT WARRANTY

Your product is guaranteed for a period of **36 months from the original date of purchase**. If a product is defective it will be replaced in accordance with the terms of this warranty. Warranty excludes consumable parts, for example: valve adapters and accessories.

### WARNING

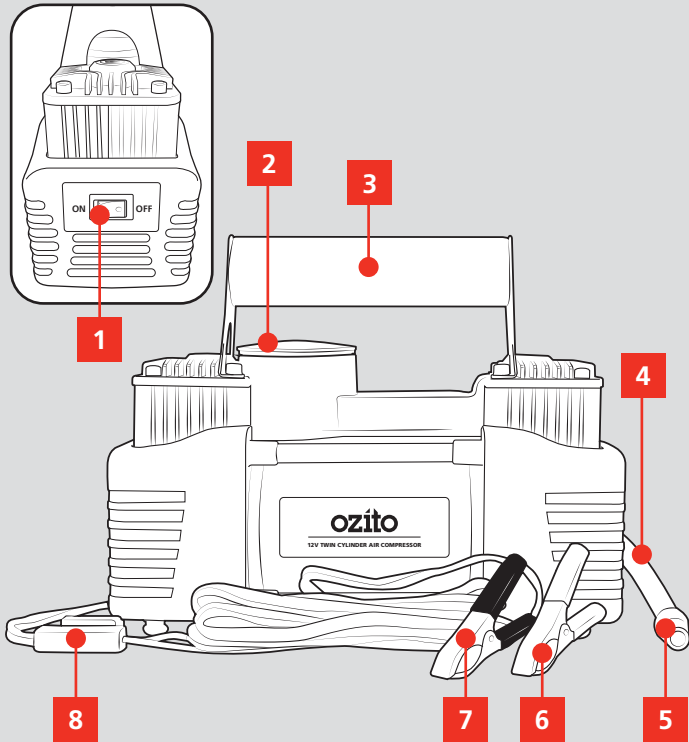
**The following actions will result in the warranty being void.**

- If the tool has been operated on a supply voltage other than that specified on the tool.
- If the tool shows signs of damage or defects caused by or resulting from abuse, accidents or alterations.
- Failure to perform maintenance as set out within the instruction manual.
- If the tool is disassembled or tampered with in any way.
- Professional, industrial or high frequency use.

# KNOW YOUR PRODUCT

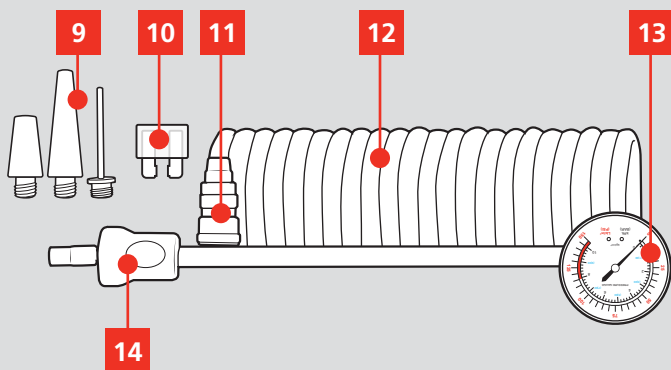
## 12V TWIN CYLINDER AIR COMPRESSOR

1. On/Off Switch
2. Nozzle Storage Container
3. Carry Handle
4. Tool Hose
5. Quick Connect Hose Fitment
6. Battery Terminal Clamp (+)
7. Battery Terminal Clamp (-)
8. Inline Fuse



## ACCESSORIES

9. 3 x Inflation Nozzles
10. Replacement Fuse
11. Quick Connect Hose Fitment
12. Pressure Hose
13. Pressure Gauge
14. Tyre Chuck



### ONLINE MANUAL

Scan this QR Code with your mobile device to take you to the online manual.



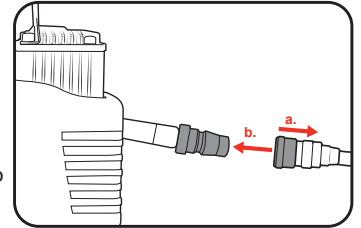
# SETUP & PREPARATION

## 1. ASSEMBLY

**WARNING!** ENSURE THE TOOL IS TURNED OFF AND DISCONNECTED FROM THE POWER SUPPLY BEFORE PERFORMING ANY OF THE FOLLOWING OPERATIONS.

### Attaching The Air Hose

1. Retract and hold the sleeve of the Nitto coupler on the air hose.
2. Insert the Nitto fitting of the tool hose and release the Nitto coupler sleeve. The Nitto coupling should click into place.

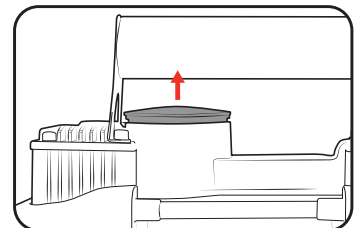


3. Check that the fitting is secure by tugging gently on the connector. If the hose detaches, repeat steps 1 & 2, pushing the Nitto fitting firmly into the coupler.

### Using An Inflation Nozzle

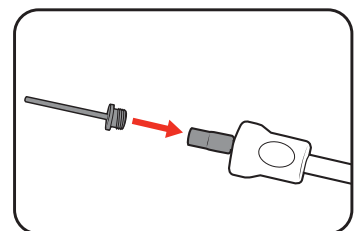
There is a storage container on the unit for the inflation nozzles when not they are not in use.

1. Pull off the lid on the nozzle storage compartment.



2. Select the appropriate inflation nozzle based on the air inlet of the object to be inflated.

3. Screw the inflation nozzle onto the tyre chuck on the air hose.



# 3 YEAR REPLACEMENT WARRANTY

# OPERATION

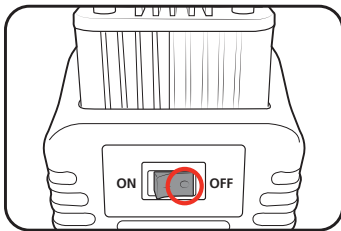
## 2. APPLYING A POWER SOURCE

**WARNING!** KEEP THE VEHICLE ENGINE RUNNING WHILE USING THE AIR COMPRESSOR TO PREVENT DISCHARGING THE VEHICLE BATTERY COMPLETELY.

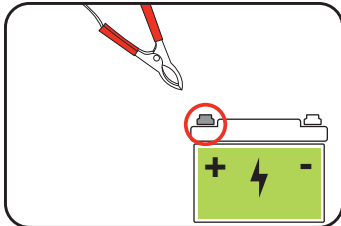
**WARNING!** ENSURE THE POWER CORD IS UNCOILED AND FULLY EXTENDED TO AVOID OVERHEATING THE POWER CORD. ENSURE THAT IT DOES NOT GET TANGLED OR CAUGHT IN ANY ROTATING PARTS WITHIN THE ENGINE COMPARTMENT OF THE VEHICLE.

### Connecting The Compressor To A Car Battery

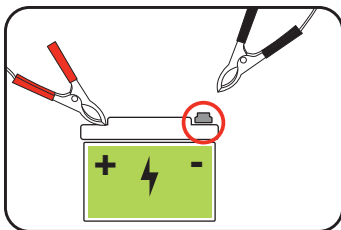
1. Ensure the on/off switch is in the off '0' position.



2. With the car engine running, connect the red battery terminal clamp to the positive (+) pole on your vehicle battery.



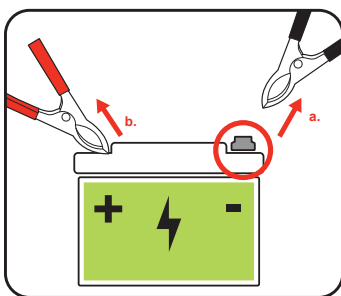
3. Connect the black battery terminal clamp to the negative (-) pole on your vehicle battery.



### Disconnecting The Compressor From The Power Source

1. Turn off the air compressor by flipping the on/off switch to the off '0' position.

2. Remove the black battery terminal clamp from the negative (-) pole of your vehicle battery.



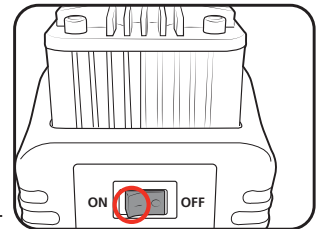
3. Remove the red battery terminal clamp from the positive pole (+) of the vehicle battery.

## 3. CONTROLS

**WARNING!** ONLY USE THE AIR COMPRESSOR IN WELL VENTILATED AREAS.

### Starting The Air Compressor

1. To turn on the air compressor, press the on/off switch to the 'I' position.



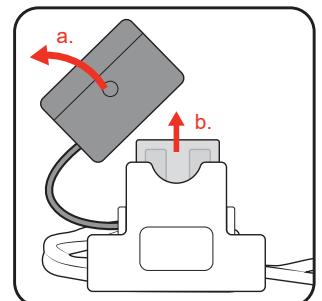
**Note:** You may experience a slight delay (approximately 0.5 seconds) between the on/off switch being flipped and the motor unit turning on. This is a normal function while the compressor pressurises the air in the hose.

2. To turn the unit off, press the on/off switch to the '0' position.

### Inline Fuse Protection

The air compressor is equipped with a 30A fuse between the unit and the clamps. This feature is designed to protect you and the unit from excessive current surges. If the fuse breaks during use, follow the steps below to replace it.

1. Flip the on/off switch to the off position, disconnect the black clamp and then the red clamp from the battery.



2. Flip open the lid on the fuse housing. Remove the old fuse and replace it with the supplied replacement.

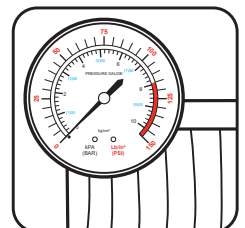
3. Replace the fuse housing lid.

**WARNING!** DO NOT CONTINUE USE OF THE UNIT IF THE FUSE BREAKS AGAIN ON USE IMMEDIATELY AFTER BEING REPLACED. THERE MAY BE A FAULT WITH THE UNIT; CONTACT OZITO CUSTOMER SERVICE.

### In-Line Pressure Gauge

The in-line pressure gauge allows you to conveniently monitor the air pressure in the object during inflation/deflation without needing to change between accessories.

**Note:** You will need to momentarily halt inflation/deflation in order to obtain accurate pressure readings as air flowing in the hose may throw off the readings.



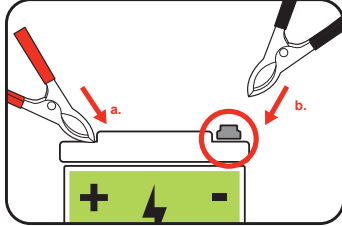
## 4. USING THE COMPRESSOR

**WARNING!** ENSURE THAT THE AIR COMPRESSOR IS SITTING ON A STEADY, LEVEL SURFACE DURING USE.

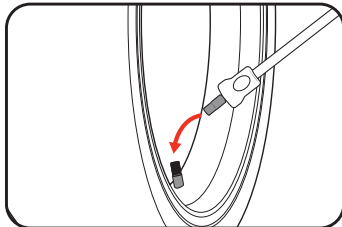
### Inflating A Tyre

1. Connect the air hose to the compressor.

2. Connect the battery clamps to a running vehicle battery in the correct order.

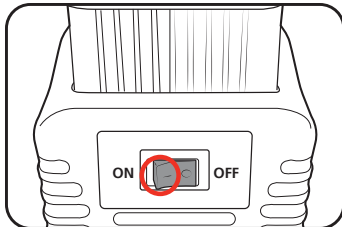


3. Screw the tyre chuck of the air hose onto the valve stem of the tyre to be inflated.



**WARNING!** ENSURE THAT THE TYRE CHUCK IS SECURELY ATTACHED. FAILURE TO FOLLOW THIS INSTRUCTION MAY CAUSE THE HOSE TO BLOW OUT AND WHIP ABOUT.

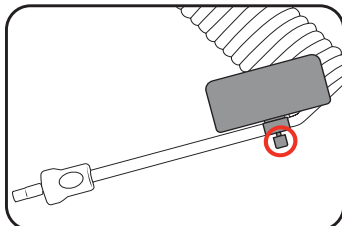
4. Switch the air compressor on and allow the tyre to inflate.



5. Once the desired pressure has been reached, switch off the air compressor. Check if the desired inflation pressure has been reached. Repeat step 5 as necessary until the tyre is fully inflated.

**Note:** The air flow in the hose will increase the pressure reading shown on the gauge. Turning the compressor off may cause the reading to drop slightly, but this will provide an accurate reading of the pressure in the tyre.

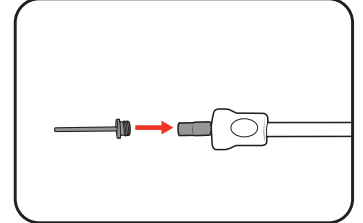
6. Press the button on the back of the pressure gauge to release excess air if the tyre is over-inflated.



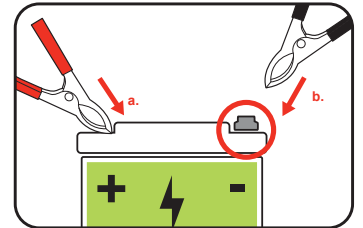
7. Turn off the unit and unscrew the tyre chuck once the tyre is suitably inflated.

### Inflating Other Objects.

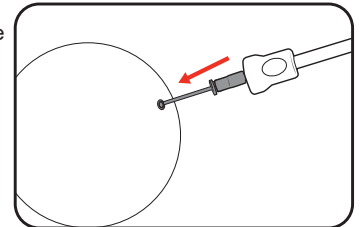
1. Connect the air hose to the compressor and the appropriate inflation nozzle to the tyre chuck.



2. Connect the battery clamps to a running vehicle battery in the correct order.



3. Insert the inflation nozzle into the air inlet on the object to be inflated.



4. Whilst maintaining a firm grip on the air hose, switch the air compressor on and allow the object to inflate.

5. Turn off the unit and remove the nozzle from the object once the object is fully inflated.

**WARNING!** THE INFLATION HOSE & NOZZLE MAY GET HOT DURING USE IF THE AIR COMPRESSOR IS USED FOR LONGER THAN 5 MINUTES. SWITCH OFF THE AIR COMPRESSOR AND ALLOW THE HOSE & NOZZLE TO COOL BEFORE HANDLING.

# MAINTENANCE



**WARNING!** BEFORE CLEANING YOUR AIR COMPRESSOR OR CARRYING OUT ANY MAINTENANCE PROCEDURE, MAKE SURE THAT IT IS DISCONNECTED FROM THE POWER SUPPLY TO PREVENT ACCIDENTAL STARTING.

## Cleaning

1. We recommend that you clean the appliance immediately after you use it.
2. Clean the appliance regularly with a dry cloth. Do not use cleaning agents or solvents; these may be aggressive to the plastic parts in the appliance. Ensure that no water can get into the interior of the appliance.

## Storage

Switch off the tool and make sure that it is secured in such a way that it cannot be started up again by any unauthorised person.

Store the tool in a dry location which is not accessible to unauthorised persons.

**Note:** Ozito Industries will not be responsible for any damage or injuries caused by the repair of the tool by an unauthorised person or by mishandling of the tool.

# DESCRIPTION OF SYMBOLS

<b>V</b>	Volts	<b>A</b>	Amperes
<b>psi</b>	Pounds per square inch	<b>L/min</b>	Litres per minute
	Hot surface; do not touch		Warning
	Wear hearing protection		Compressor unit may start without warning
	Read Instruction Manual		Regulatory Compliance Mark (RCM)

# CARING FOR THE ENVIRONMENT



Power tools that are no longer usable should not be disposed of with household waste but in an environmentally friendly way. Please recycle where facilities exist. Check with your local council authority for recycling advice.



Recycling packaging reduces the need for landfill and raw materials. Reuse of recycled material decreases pollution in the environment. Please recycle packaging where facilities exist. Check with your local council authority for recycling advice.

# SPARE PARTS

Spare parts can be ordered from the Special Orders Desk at your local Bunnings Warehouse.

For further information, or any parts not listed here, visit

[www.ozito.com.au](http://www.ozito.com.au) or contact Ozito Customer Service:

Australia 1800 069 486

New Zealand 0508 069 486

E-mail: [enquiries@ozito.com.au](mailto:enquiries@ozito.com.au)

# GENERAL POWER TOOL SAFETY WARNINGS



**WARNING!** Read all safety warnings and all instructions. Failure to follow the warnings and instructions may result in electric shock, fire and/or serious injury.

Save all warnings and instructions for future reference. The term "power tool" in the warnings refers to your mains-operated (corded) power tool or battery-operated (cordless) power tool.

1. Work area safety
  - a. **Keep work area clean and well lit.** Cluttered or dark areas invite accidents.
  - b. **Do not operate power tools in explosive atmospheres, such as in the presence of flammable liquids, gases or dust.** Power tools create sparks which may ignite the dust or fumes.
  - c. **Keep children and bystanders away while operating a power tool.** Distractions can cause you to lose control.
2. Electrical safety
  - a. **Power tool plugs must match the outlet. Never modify the plug in any way. Do not use any adapter plugs with earthed (grounded) power tools.** Unmodified plugs and matching outlets will reduce risk of electric shock.
  - b. **Avoid body contact with earthed or grounded surfaces, such as pipes, radiators, ranges and refrigerators.** There is an increased risk of electric shock if your body is earthed or grounded.
  - c. **Do not expose power tools to rain or wet conditions.** Water entering a power tool will increase the risk of electric shock.
  - d. **Do not abuse the cord. Never use the cord for carrying, pulling or unplugging the power tool. Keep cord away from heat, oil, sharp edges or moving parts.** Damaged or entangled cords increase the risk of electric shock.
  - e. **When operating a power tool outdoors, use an extension cord suitable for outdoor use.** Use of a cord suitable for outdoor use reduces the risk of electric shock.
3. Personal safety
  - a. **Stay alert, watch what you are doing and use common sense when operating a power tool. Do not use a power tool while you are tired or under the influence of drugs, alcohol or medication.** A moment of inattention while operating power tools may result in serious personal injury.
  - b. **Use personal protective equipment. Always wear eye protection.** Protective equipment such as dust mask, non-skid safety shoes, hard hat, or hearing protection used for appropriate conditions will reduce personal injuries.
  - c. **Prevent unintentional starting. Ensure the switch is in the off-position before connecting to power source and/or battery pack, picking up or carrying the tool.** Carrying power tools with your finger on the switch or energising power tools that have the switch on invites accidents.

- d. **Remove any adjusting key or wrench before turning the power tool on.** A wrench or a key left attached to a rotating part of the power tool may result in personal injury.
  - e. **Do not overreach. Keep proper footing and balance at all times.** This enables better control of the power tool in unexpected situations.
  - f. **Dress properly. Do not wear loose clothing or jewellery. Keep your hair, clothing and gloves away from moving parts.** Loose clothes, jewellery or long hair can be caught in moving parts.
  - g. **If devices are provided for the connection of dust extraction and collection facilities, ensure these are connected and properly used.** Use of dust collection can reduce dust-related hazards.
  - h. **Do not let familiarity gained from frequent use of tools allow you to become complacent and ignore tool safety principles.** A careless action can cause severe injury within a fraction of a second.
4. Power tool use and care
    - a. **Do not force the power tool. Use the correct power tool for your application.** The correct power tool will do the job better and safer at the rate for which it was designed.
    - b. **Do not use the power tool if the switch does not turn it on and off.** Any power tool that cannot be controlled with the switch is dangerous and must be repaired.
    - c. **Disconnect the plug from the power source and/or the battery pack from the power tool before making any adjustments, changing accessories, or storing power tools.** Such preventive safety measures reduce the risk of starting the power tool accidentally.
    - d. **Store idle power tools out of the reach of children and do not allow persons unfamiliar with the power tool or these instructions to operate the power tool.** Power tools are dangerous in the hands of untrained users.
    - e. **Maintain power tools.** Check for misalignment or binding of moving parts, breakage of parts and any other condition that may affect the power tool's operation. If damaged, have the power tool repaired before use. Many accidents are caused by poorly maintained power tools.
  - f. **Keep cutting tools sharp and clean.** Properly maintained cutting tools with sharp cutting edges are less likely to bind and are easier to control.
  - g. **Use the power tool, accessories and tool bits etc. in accordance with these instructions, taking into account the working conditions and the work to be performed.** Use of the power tool for operations different from those intended could result in a hazardous situation.
  - h. **Keep handles and grasping surfaces dry, clean and free from oil and grease.** Slippery handles and grasping surfaces do not allow for safe handling and control of the tool in unexpected situations.
5. Service
    - a. **Have your power tool serviced by a qualified repair person using only identical replacement parts.** This will ensure that the safety of the power tool is maintained.

# AIR COMPRESSOR SAFETY WARNINGS



This appliance is not intended for use by persons (including children) with reduced physical, sensory or mental capabilities, or lack of experience and knowledge, unless they have been given supervision or instruction concerning use of the appliance by a person responsible for their safety. Children should be supervised to ensure that they do not play with the appliance.

- Do not place the hose end against any part of your body when turned on, as this may infuse air into your blood stream putting your health at serious risk.
- Do not make any alterations to this tool. Only use the adaptors supplied with this product.
- Use this product only in accordance with operation instructions included in this manual.
- If the pump is making abnormal sounds or its temperature is quite high, turn off the power straight away and let it cool for at least 10 minutes before trying again. Improper use may result in damage of the tool.
- Do not leave unattended and operating. Keep out of reach of children.
- Put the tool in a dry place if it is not in use for an extended period of time.
- Keep the tool away from flammable liquid or gas. Do not allow the tool to become wet.
- Never put the connector and adaptors into your mouth, ear or eye. They are not toys.
- Avoid inserting hands into the inlets/outlets of the tool while it is connected to power.
- Before using the tool, always inspect it visually. Do not use the tool if it is cracked and/or damaged. If the tool is damaged, contact Ozito customer service.
- Protect the plug and the power cable from heat, oil or sharp edges.
- If damaged, the power cable must be replaced by a qualified electrician.
- If oil leakage is found, do not start or run the compressor until the leak is fixed and the spilled oil has been wiped away.
- To reduce the risk of fire or explosion, never spray flammable liquids in a confined area. If sparks come into contact with petrol vapours or solvents, they may ignite the vapours and cause a fire or explosion.
- Always operate the compressor in a well ventilated area. Do not smoke while spraying. Do not spray where sparks or flames are present. Keep the compressor as far away from the spray area as possible.
- The solvents trichloroethane and methylene chloride can chemically react with the aluminium used in some paint spray guns and form an explosion. If these solvents are used, ensure that only stainless steel spray equipment is connected. The compressor is not affected by the use of these solvents.
- Never directly inhale the compressed air produced by a compressor and do not use it for charging breathing tanks.
- Do not use welding equipment in close proximity to the compressor. Do not weld anything to the air tank of the compressor: this could dangerously weaken the tank and will void the warranty.
- Do not use the compressor outdoors when it is raining or on a wet surface; either situation could

cause an electric shock.

- Always maintain a safety distance of at least 3 meters between the compressor and the work area. Ensure that the compressor is on a stable surface.
- Always use the handle to move the compressor.
- Never let the compressor come into contact with water or other liquids, as the appliance is live, this could cause electrocution or short-circuits. Never use the appliance with bare feet, wet hands or wet feet.
- The compressed air produced by the compressor cannot not be used for pharmaceutical, food or medical purposes or to fill the air bottles of scuba divers.
- Do not cover the air inlets on the compressor.
- Compressors and lines reach high temperatures during operation. Avoid contact! Risk of burns!
- Gases or vapours drawn in by the compressor have to be kept free of constituents that may cause fire or explosions inside the compressor.
- When you disconnect the hose coupling, hold the coupling element in your hand to prevent injury from the whiplashing hose.
- Keep the compressor at least 300mm from the nearest wall to ensure adequate ventilation for cooling purposes.
- Protect the air hose and cordset from damage. Inspect for weak or worn spots regularly and replace if necessary.
- Check the maximum pressure rating of any tools or accessories that you intend using with the compressor. The output pressure of the air from the compressor must be regulated so that it never exceeds the rated pressure of the tool or accessory.

The tool must be used only for its prescribed purpose. Any use other than those mentioned in this Manual will be considered a case of misuse. The user and not the manufacturer shall be liable for any damage or injury resulting from such cases of misuse.

The manufacturer shall not be liable for any changes made to the tool nor for any damage resulting from such changes.

Even when the tool is used as prescribed it is not possible to eliminate all residual risk factors. The following hazards may arise in connection with the tool's construction and design:

- Damage to the lungs if an effective breathing mask is not worn.
- Damage to hearing if effective earmuffs are not worn.
- Damage to the eyes if effective safety goggles or shield are not worn.

**WARNING!** In the event that an air line is cut or broken, the air supply must be turned off at the compressor. A broken air line which is not supported is extremely dangerous and can whip around very quickly, both with the capability of striking people, and blowing foreign particles into the air. Do not attempt to catch the air line but immediately keep bystanders well clear and turn off the air supply to the hose, turn off the compressor at the On / Off button, and then remove the hose from the compressor.