



Einhell

BLUE

BG-PT 2643 Petrol Lawn Trimmer

Art.-No. 34.018.31

The high-powered petrol grass trimmer is designed for easy operation and maintenance. It is ideal for all trimming jobs near trees, paths and steps throughout the garden. For easy installation and space saving storage this unit has a split shaft coupling system.

Features

- Low vibrating 2-stroke engine (1)
- Quick start system for simple starting
- Continuously adjustable additional handle for easy and accurate guidance (2)
- Quick coupling system for an easy installation and disassembling (3)
- Angled alu guidance bar (4) and carrying belt (not illustrated) for effortless operation
- Large safety guard (5)
- Twin line spool with tip-automatic system, with tool less replacement (6)
- Electronic ignition
- Primer (manual fuel pump) for fast starting after a long break
- Full crank shaft
- Centrifugal clutch for cutting attachment

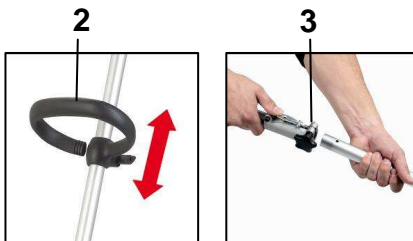
Technical Data

- Power: 0.8 kW / 1.1 HP
- Motor: 2-stroke
- Capacity: 26 ccm
- Cutting width double thread: 43 cm
- Thread-Ø: 2 mm
- Thread length: 5.4 m
- Fuel capacity: 0.55 ltr.
- Net weight: 5.3 kg
- Gross weight: 7.4 kg
- Packing dimensions: 1,000 x 300 x 285/145 mm
- Bar code: 4006825 547429
- Sales unit: 1 pc

Passes the pollutants directive 2002/88 EC (emission 2)

Dual jet system:

Better consumption, more power, less consumption by an additional air inlet and air transfer channel



As special accessory available:

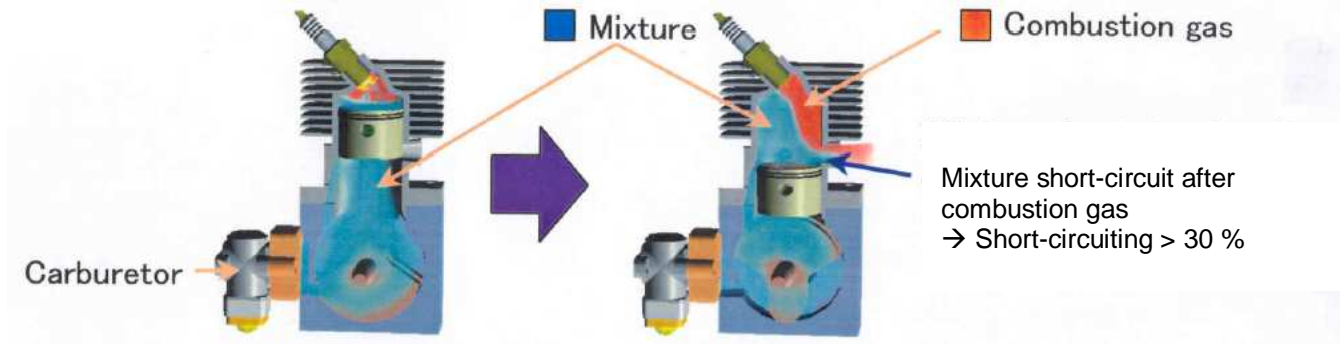
Spare thread spool
Einhell Grey

Art.-No.: 34.051.74
Bar code: 4006825 546002

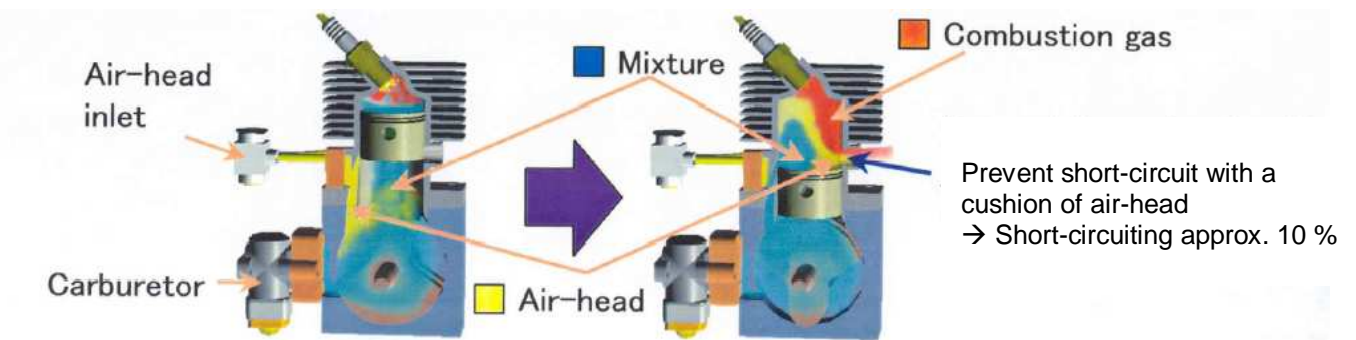


Schematic explanation dual-jet system

Conventional 2 stroke cycle engine:



2 stroke cycle engine with dual-jet system:



Schematic representation dual-jet system:

