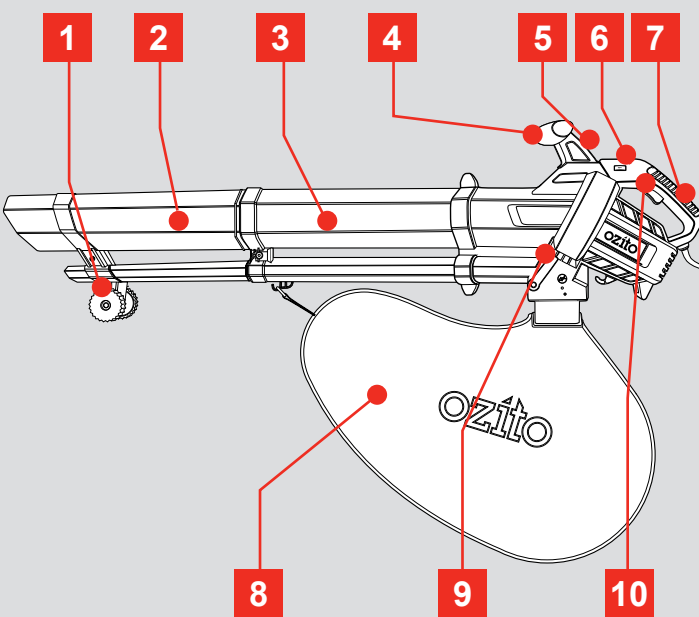




# KNOW YOUR PRODUCT

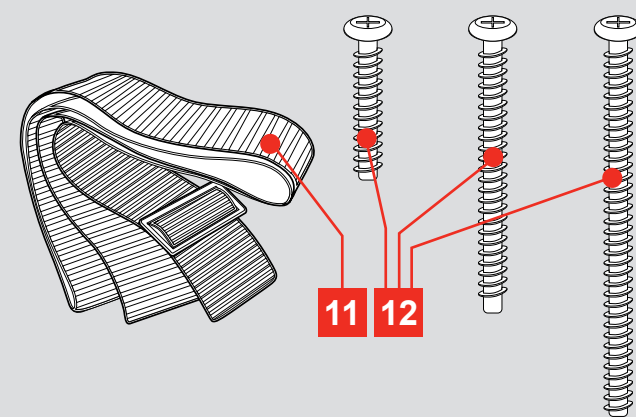
## 3 IN 1 VACUUM BLOWER-MULCHER

- |                       |                       |
|-----------------------|-----------------------|
| 1 Nose Guide Wheels   | 6 Variable Speed Dial |
| 2 Lower Tubes         | 7 Main Handle         |
| 3 Upper Tube          | 8 Collection Bag      |
| 4 Secondary Handle    | 9 Mode Selector Lever |
| 5 Shoulder Strap Hook | 10 On/Off Trigger     |



## ACCESSORIES:

- |                   |                                       |
|-------------------|---------------------------------------|
| 11 Shoulder Strap | 12 Assembly Screws x 3 (20,45 & 55mm) |
|-------------------|---------------------------------------|



## ONLINE MANUAL

Scan this QR Code with your mobile device to take you to the online manual.



# SETUP & PREPARATION

## 1. BEFORE USE

### Items Supplied

Please check that the article is complete as specified in the scope of delivery. If parts are missing, please contact our service centre or the sales outlet where you made your purchase at the latest within 5 working days after purchasing the product and upon presentation of a valid bill of purchase. Also, refer to the warranty table in the service information at the end of the operating instructions.

- Open the packaging and take out the equipment with care.
- Remove the packaging material and any packaging and/or transportation braces (if available).
- Check to see if all items are supplied.
- Inspect the equipment and accessories for transport damage.
- If possible, please keep the packaging until the end of the guarantee period.

### Danger!

The equipment and packaging material are not toys. Do not let children play with plastic bags, foils or small parts. There is a danger of swallowing or suffocating!

### Proper Use

The Blower Vac is designed to handle only foliage and garden refuse such as grass and small branches. Any other use is prohibited.

The equipment is to be used only for its prescribed purpose. Any other use is deemed to be a case of misuse. The user / operator and not the manufacturer will be liable for any damage or injuries of any kind caused as a result of this.

Please note that our equipment has not been designed for use in commercial, trade or industrial applications. Our warranty will be voided if the machine is used in commercial, trade or industrial businesses or for equivalent purposes.

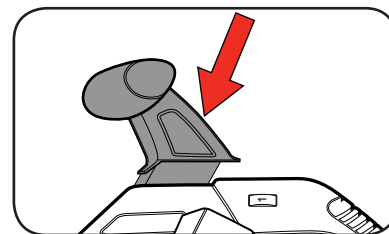
## 2. ASSEMBLY

**WARNING!** ENSURE THE TOOL DISCONNECTED FROM THE POWER SUPPLY BEFORE PERFORMING ANY OF THE FOLLOWING OPERATIONS.

### Fitting the Secondary Handle

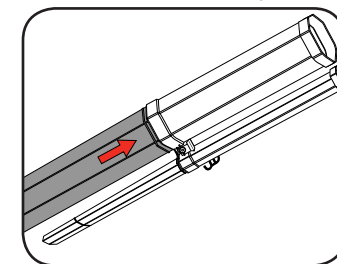
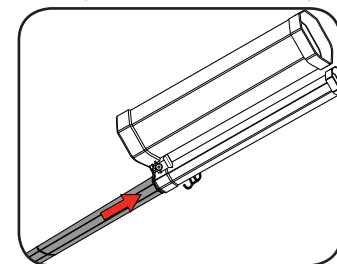
1. Insert the secondary handle so that it locks into place.

- **NOTE:** If additional force is required, a rubber mallet may be used to gently tap the handle into place.

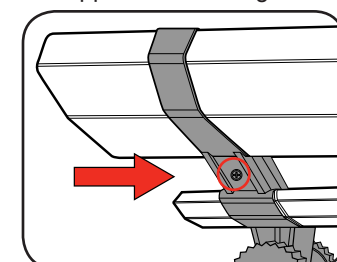
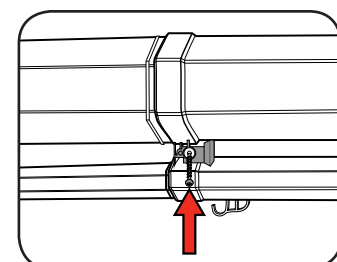


### Assembling the Tubes

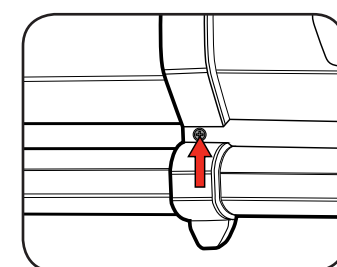
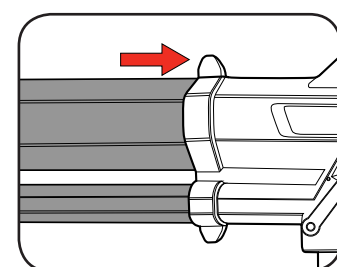
1. Insert the small lower tube into the matching upper tube and push together until they are connected firmly.
2. Insert the large lower tube into the matching upper tube and push together until they are connected firmly.



3. Secure the lower sections together with the supplied 45mm long assembly screw.
4. Slide the nose guide wheels over the lower tube and secure with the supplied 20mm long screw.

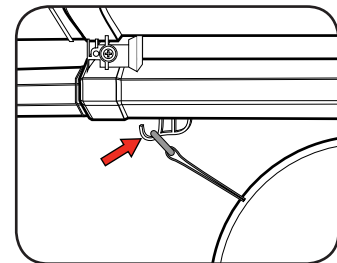
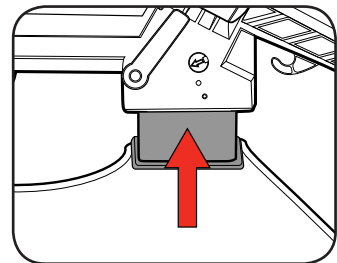


5. Slide the assembled tubes into the motor housing.
6. Secure the tubes with the supplied 55mm long screw.



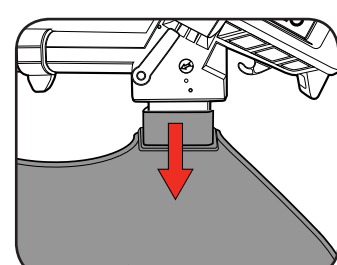
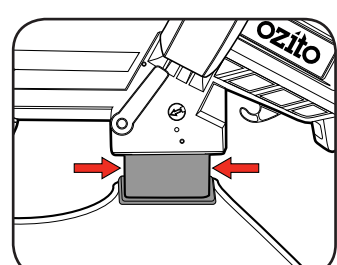
### Attaching the Collection Bag

1. Attach the plastic connector on the collection bag to the outlet in the housing.
2. Attach the clip on the collection bag to the hook underneath the upper tube.



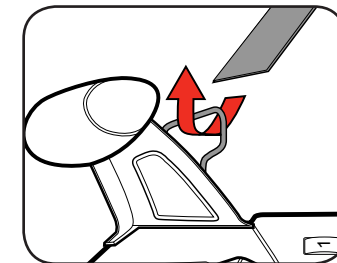
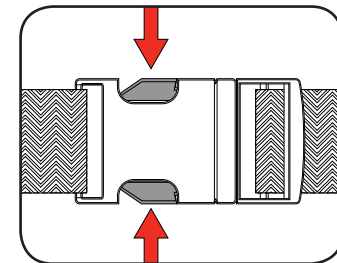
### Removing the Collection Bag

1. Simultaneously squeeze the two locating hooks on the plastic connector.
2. Pull the collection bag away from the housing.

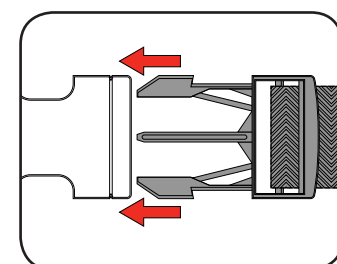


### Fitting The Shoulder Strap

1. Undo the clip on the strap by pressing both sides inward.
2. Place the strap through the shoulder strap hook on the secondary handle.



3. Close the clip on the strap to form a loop.



**NOTE:** To use the shoulder strap simply slide the strap over your shoulder so that some of the weight of the blower vac can be taken by your shoulder.

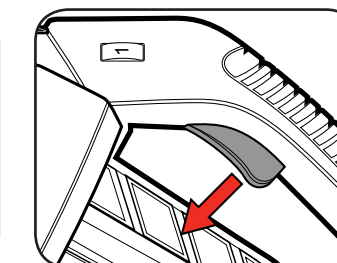
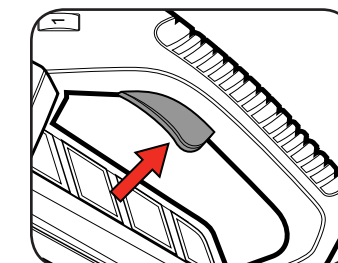
# OPERATION

## 3. CONTROLS

### On/Off Trigger

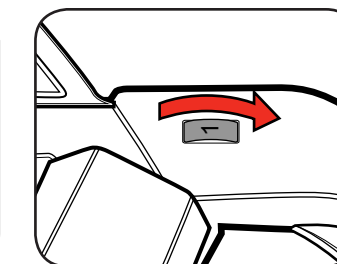
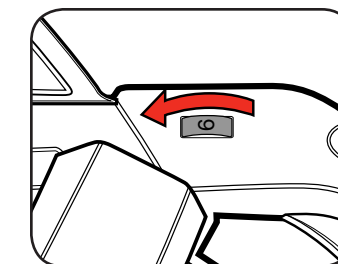
To reduce the risk of electrical shock, a residual current device (rated 30mA or less) is recommended.

1. To turn on squeeze the on/off trigger.
2. To turn off release the on/off trigger.



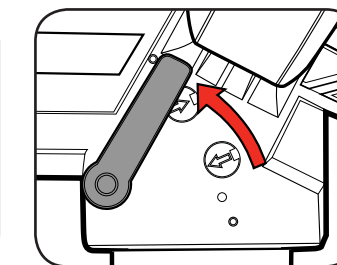
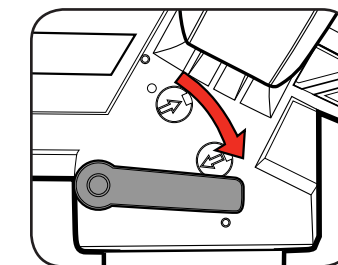
### Variable Speed Dial

1. To increase the air speed rotate the variable speed dial to a higher number.
2. To lower the air speed rotate the variable speed dial to a lower number.



### Mode Selection Lever

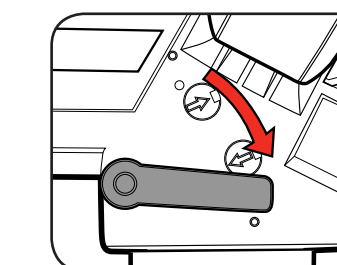
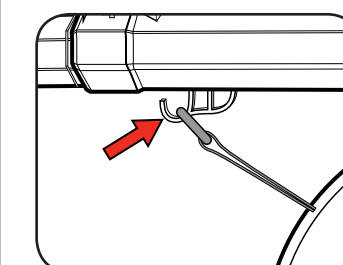
1. To select the blower function move the lever down past the blower icon.
2. To select the vacuuming/mulching function move the lever up past the vacuuming icon.



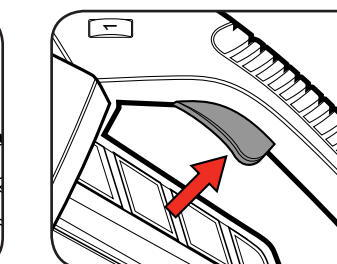
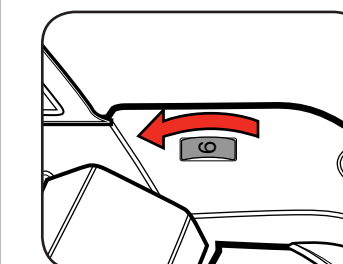
**IMPORTANT:** ALWAYS ENSURE THE COLLECTION BAG IS CORRECTLY ATTACHED AND BE AWARE OF WHAT IS BEING DRAWN UP INTO THE BLOWER VAC TUBE. THIS PRODUCT IS DESIGNED TO VACUUM GARDEN DEBRIS INCLUDING LEAVES, TWIGS AND GARDEN CUTTINGS.

## 4. USING THE BLOWER VAC

1. Make sure the collection bag is attached and zipped up correctly.
2. Select the desired operating mode.



3. Set the variable speed dial to the desired air speed.
4. Turn on by squeezing the on/off trigger.



### Emptying The Collection Bag

For best results when vacuuming it is recommended to empty the collection bag after it becomes half full. Always empty the collection bag after you have finished your job.

**WARNING!** MAKE SURE THAT THE BLOWER VAC IS SWITCHED OFF AND UNPLUGGED. WAIT UNTIL THE IMPELLOR HAS STOPPED BEFORE ATTEMPTING TO EMPTY OR REMOVE THE COLLECTION BAG.

1. Open the zip at the rear of the bag.
2. Be sure to close the zip prior to operating the blower vac.

