



56cm





Petrol Self Propelled Lawnmower

Quick Start Guide



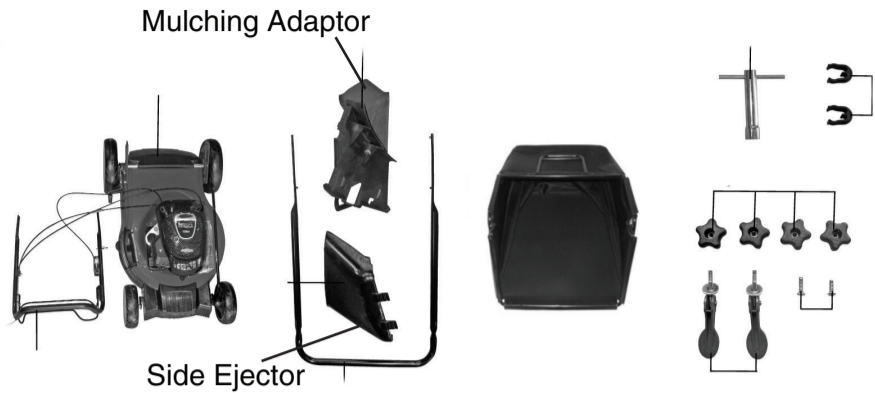
Your Safety is most important please read these safety rules before you use this machine

General Safety Rules

-  **Read the user manual before using the machine**
-  **Wear safety goggles and hearing protection**
-  **Wear gloves to protect your hands**
-  **Wear safety shoes to protect your feet**

Note – This quick start guide is intended for experienced users who have already assembled the tool, please refer to the manual for further details

Quick Start Guide



Do you have questions?
We can help
Call Customer Service
Mon – Thur 08:45 am – 5:00 pm
Friday 08:45 am – 3:15 pm



0151 649 1500
Spare Parts also available

ALWAYS READ THE SAFETY WARNINGS PRIOR TO USE

Assembling the Lawnmower (If in doubt, ALWAYS refer to the user guide before continuing) :-

1

Unpack the Lawnmower

- Open the carton carefully and remove all the parts.
- Ensure you have all the items (see above) before you discard the packaging.
- Refer to the User Guide for details of fitting and using the Mulching Adaptor and Side Ejector.

Assembly Instructions

Affix the lower push bar (Fig. 3a/Item 5) to the mower housing and set the desired working height. 3 different working heights are available. Each peg on the lower push bar can be inserted into a hole situated directly opposite to it, on the mower housing, for example A-A (Fig. 3). The lower push bar must be equally adjusted on both sides. Now affix the push bar (5) using the square head screws (14) and the star knobs (17) as shown in Figure 3a.

- Fasten the top push bar to the bottom push bar using a lever cam screw (Fig. 3b/Item 15) and a star knob (Fig. 3b/Item 17) on each side. Make sure that the lobes of the lever cam screws are folded towards the inside so that the high speed clamping function remains operational.
- Insert the grip of the starter cord (Fig. 3c/Item 4) into the hook provided for that purpose as shown in Figure 3c.
- Fasten the cords to the push bar with the supplied cable ties (Fig. 3d/Item. 12).
- Lift the ejector flap (Fig. 4 / Item 8) with one hand and hook in the grass bag as shown in Figure 4.

2

Operation

Note: For detailed information on the engine and oil, refer to the enclosed manual from Briggs & Stratton.

Important! The engine does not come with oil in it. Therefore, ensure that you add oil before starting it up. The oil level in the engine must be checked each time before mowing. See the enclosed Briggs & Stratton manual.

In order to avoid any unintentional start-ups of the lawn mower, it comes equipped with an engine brake (Fig. 5a/Item 1) which must be pulled back before the engine can be started. When the engine control lever is released it must return to its initial position, at which point the engine automatically switches off. The cutting height is centrally adjusted with the cutting height adjustor lever (Fig. 7/Item 8).

Up to 5 different cutting heights can be selected. Pull the adjustor lever out and select the desired cutting height. The lever snaps into the desired position.

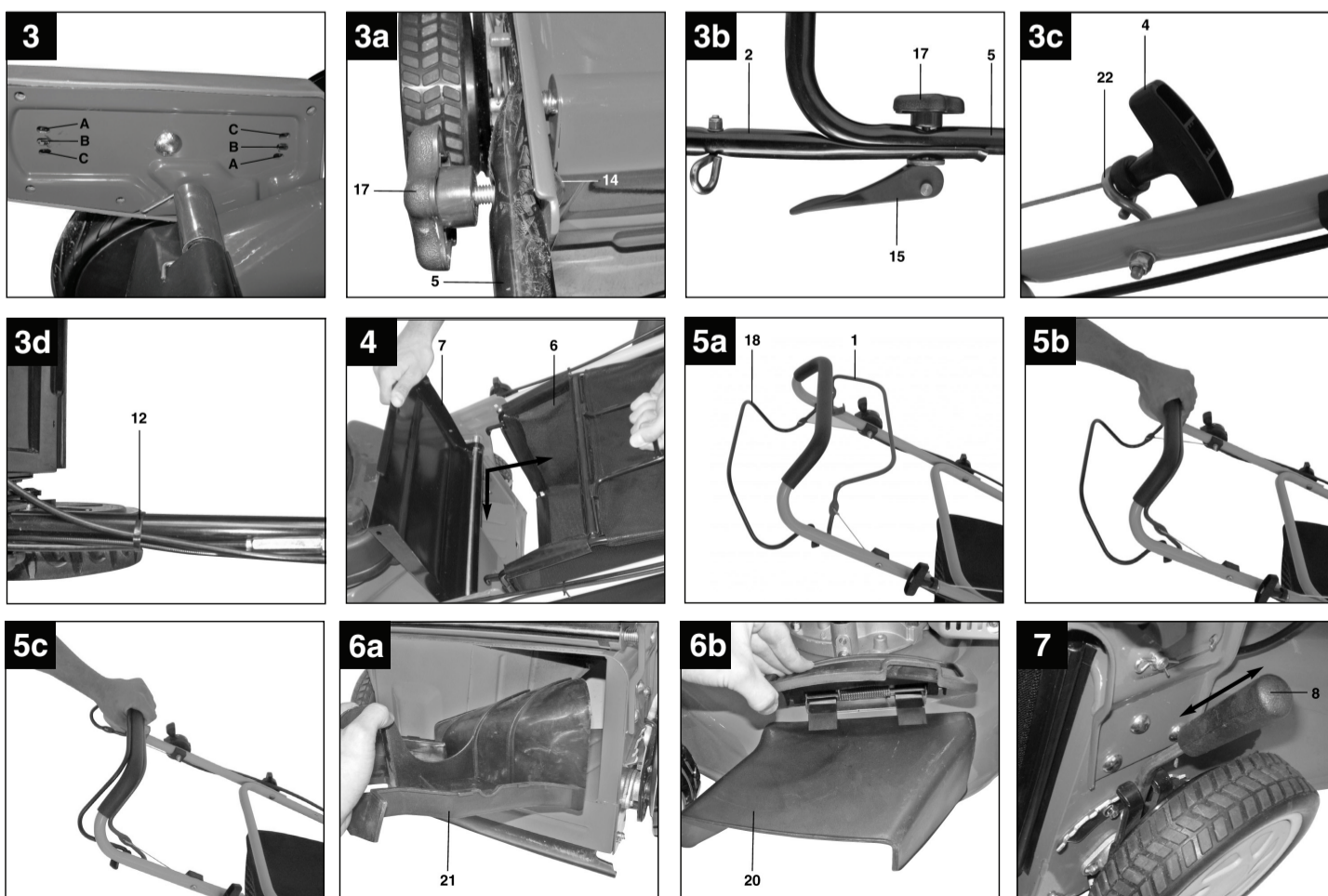
Note:

- Engine brake (Fig. 5a. & 5b.): Use the lever (Fig. 5a / Item 1): to stop the engine. When you release the lever the engine and the blade stop automatically (Fig. 5a.). Before you start to mow, check the start/stop lever several times to be sure that it is working properly. Ensure that the tension cable can be smoothly operated (i.e. is not catching or kinking in any way). To mow, hold the lever in the working position (Fig.5b).

Caution: The blade begins to rotate as soon as the engine is started. Before you start the engine, move the motor brake several times to be sure that the stop cable is properly working.

- Check the oil level
- Fill the tank with petrol, using a funnel and measuring jug to do so. Ensure that the petrol is free of any contaminants.
- Press the red primer button (Fig. 8) 5 times.
- Stand behind the mower. Place one hand on the engine start/stop lever and pull the bars together (Fig. 5a / Fig. 5b). Place the other hand on the starter handle.

Start the engine using the reversing starter (Fig.3c/Item 4). To do this pull the handle approx.10 - 15 cm (until you feel a resistance) and then start the engine with a sharp pull. If the engine does not start, pull the handle again. This could take up to 10 pulls.



To start the mower moving forward
Once the engine is running, operate the engine drive; by pulling the Drive lever towards the top push bar (Fig. 5c). Always walk behind the lawnmower whilst the drive is working.
To stop the mower moving forward
Release the Drive lever away from the top push bar (Fig. 5b). The engine will still be running & the blade will still be rotating.
To stop the engine
Always try to release the Drive lever, before stopping the engine). Release the engine start/stop lever (Fig. 5a). The Engine will stop running & the blade will stop rotating.

Important! Never allow the starter cord to snap back. **Note:** In cold weather, it may be necessary to repeat the starting process several times.