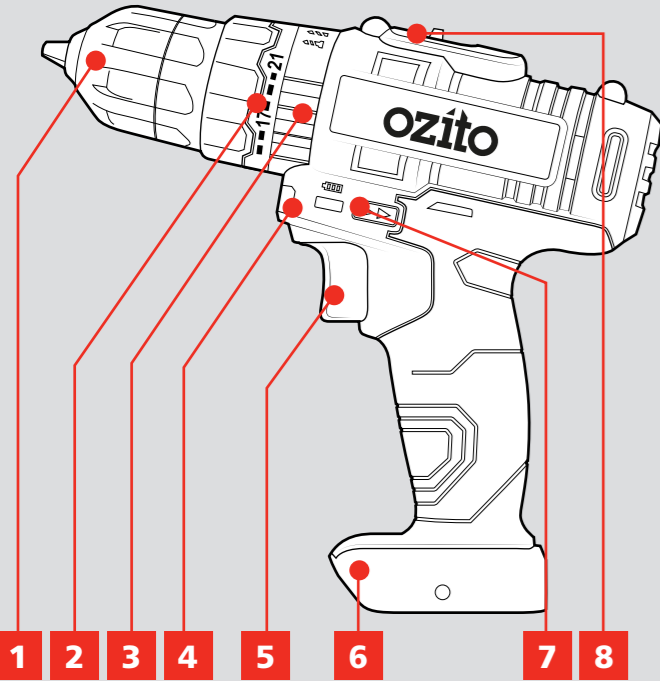




# KNOW YOUR PRODUCT

## CORDLESS HAMMER DRILL

- 1 Keyless Chuck
- 2 Torque Adjustment Collar
- 3 Function Collar
- 4 LED Work Light
- 5 Variable Speed Trigger
- 6 Battery Seating
- 7 Forward/ Reverse Lever
- 8 Gear Selector Switch



## ACCESSORIES

- 9 Belt Clip

9



## BATTERY & CHARGER

This tool is compatible with all batteries and chargers from the Ozito Home-12volt range.

### ONLINE MANUAL

Scan this QR Code with your mobile device to take you to the online manual.

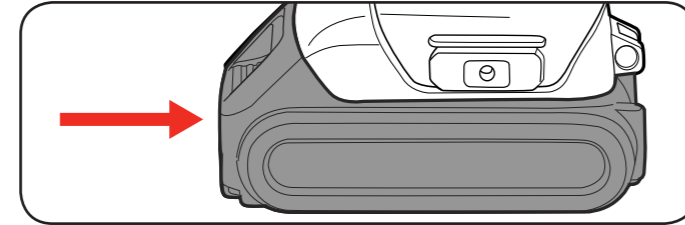


# SETUP & PREPARATION

## 1. FITTING THE BATTERY

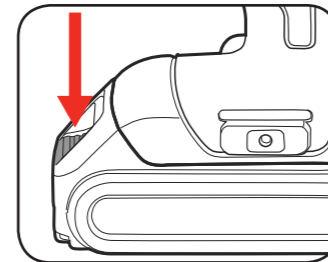
### Installing the Battery Pack

1. Slide the battery into the drill base until it clicks into place.



### Removing the Battery Pack

1. Hold down the battery release button and then slide the battery out.

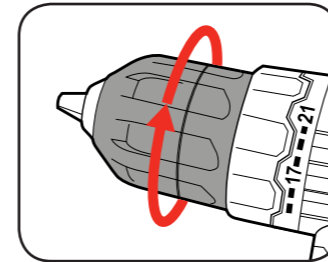


## 2. KEYLESS CHUCK

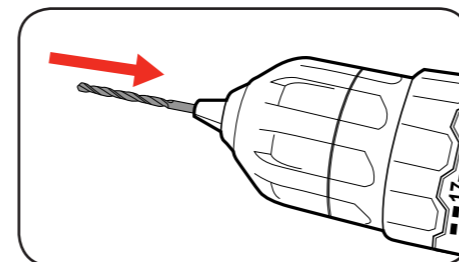
**WARNING!** ENSURE THE TOOL IS SWITCHED OFF AND THE BATTERY IS REMOVED BEFORE PERFORMING ANY OF THE FOLLOWING TASKS.

### Installing a Drill Bit

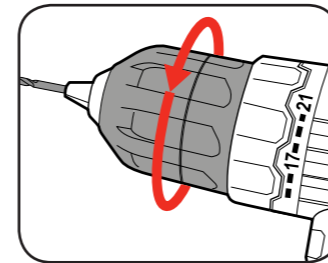
1. Rotate the chuck collar anti-clockwise to open the chuck



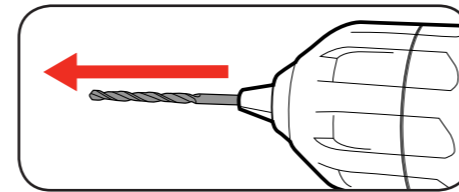
2. Insert the drill bit, making sure it is centred in the chuck.



3. Tighten the chuck by turning clockwise.

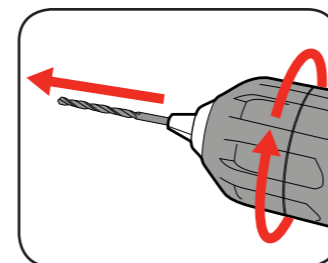


4. Pull on the bit to ensure it is firmly secured.



### Removing a Drill Bit

1. Open the chuck by rotating the chuck collar and remove the drill bit.



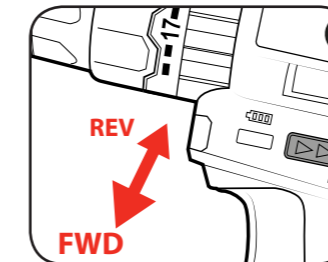
**CAUTION:** TO REDUCE THE RISK OF INJURY WE RECOMMEND THE USE OF GLOVES WHEN HANDLING DRILL BITS.

# OPERATION

## 3. CONTROLS

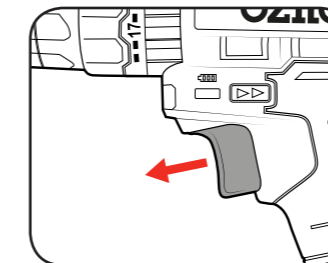
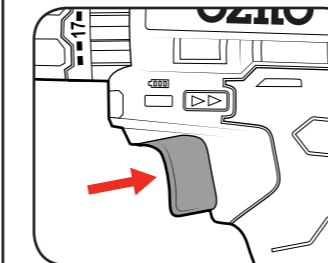
### Forward / Reverse Lever

1. For forward rotation, push the fwd/rev lever towards the left side of the drill. For reverse rotation push fwd/rev lever to the right.



### Variable Speed Trigger

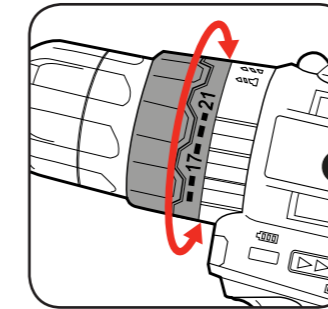
1. To start drilling squeeze the variable speed trigger.
2. To stop drilling release the trigger.



**Note:** The more the variable speed trigger is depressed, the faster the drill bit will rotate.

### Adjusting Torque

1. Rotate the torque collar to the desired setting.

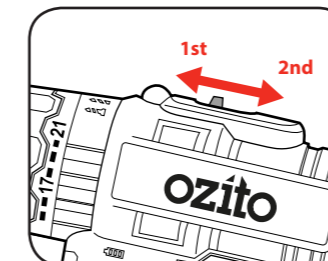


**Note:** Selecting a higher torque setting will allow the drill to use more torque to drive the screw in or out. To prevent damaging the screw head, it is recommended to start at a low torque setting and increase when necessary.

### Speed Control

The gear selector controls the speed of the drill. First gear allows slower drilling with more torque, while second gear is suitable when less torque but higher speed is required.

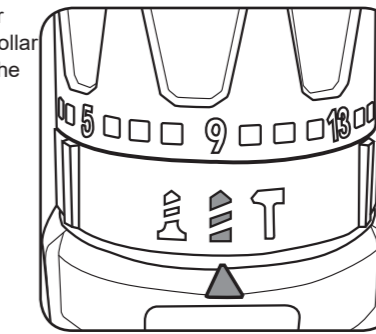
1. Slide the switch forward to select first gear.
2. Slide the switch backward to select second gear.



## 4. FUNCTIONS

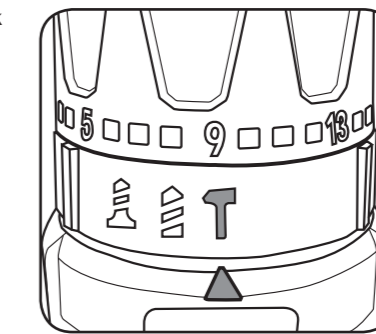
### Drilling

1. To drill into wood, metal or plastic, turn the function collar to the align the arrow on the housing with the drill icon.



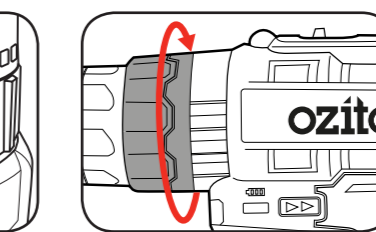
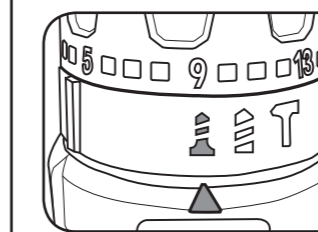
### Hammer Drilling

1. To drill into concrete, brick or other masonry, turn the function collar to the align the arrow on the housing with the hammer icon.

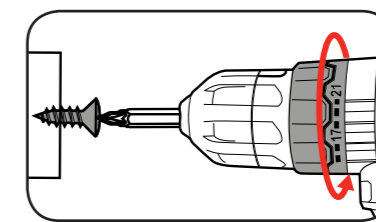


### Screw Driving to a Preset Depth

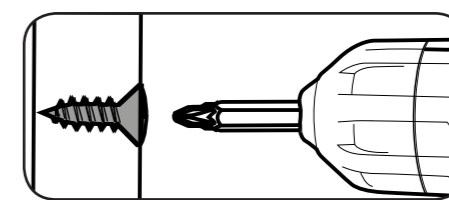
1. Turn the function collar to the align the arrow on the housing with the screw icon.
2. Set the torque collar to lowest setting and tighten the first screw.



3. If the clutch ratchets and makes a clicking sound before screw is flush, increase the collar setting and continue tightening.



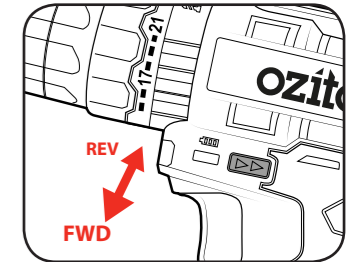
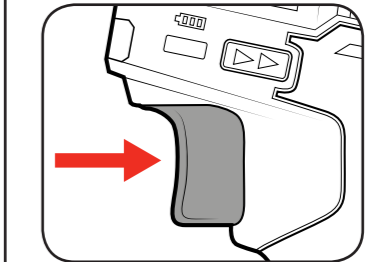
4. Repeat until you reach the correct setting/ screw depth. Use this setting for the remaining screws.



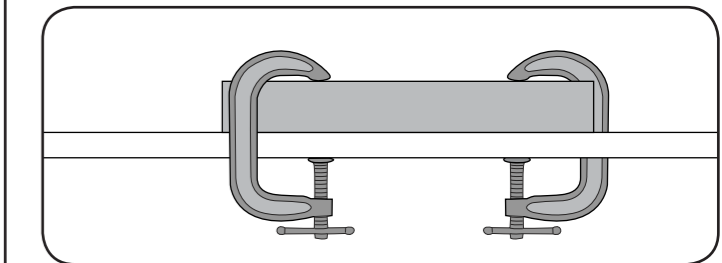
## 5. DRILLING

Before starting to drill, perform a few simple checks.

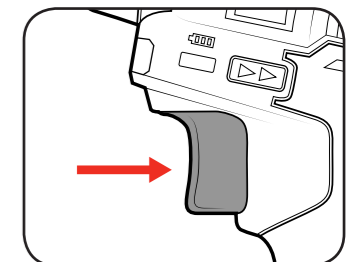
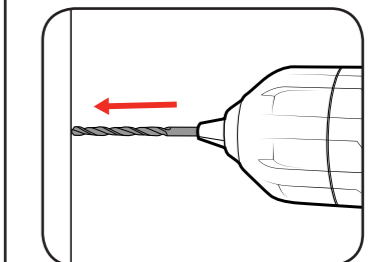
1. Depress and release the variable speed trigger to ensure it is not locked on.
2. Check the forward/reverse lever is on desired setting.



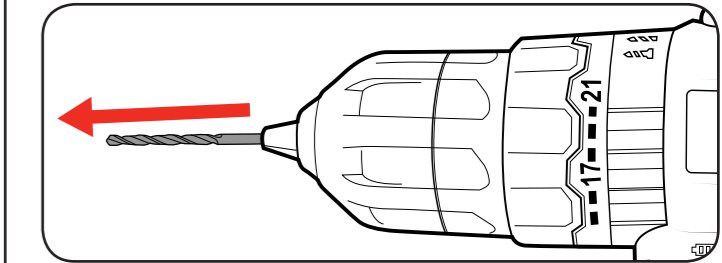
3. Secure the material to be drilled in a vice or clamp to stop it turning whilst drilling.



4. Hold the drill firmly and place the bit at the point to be drilled.
5. Depress the variable speed trigger to start the drill.



6. Move the drill bit into the workpiece.



**Note:** Do not force the drill or apply side pressure to elongate the hole. Let the drill do all the work.

**3** YEAR REPLACEMENT WARRANTY