

**Economical and powerful  
for universal use!**

**Einhell®**

**NEW GENERATION**

**Tank capacity 13.3 Litres**



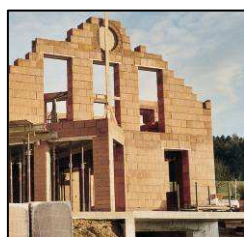
This "power station" supplies energy and provides security.

Power will be available whenever it is needed. Power failures or insufficient current supply are no longer a problem; whether during camping, at building sites, in homes or cottages, on boats or in the garden. **This equipment can be used nearly everywhere, and, with its continuous power supply of 4,200 watts, provides sufficient power for many applications. The large 13.3-litre tank ensures continuous operation for eleven hours at 2/3 load.** The power generator is powered by a high-quality diesel engine and is equipped with an overload switch.. With this power generator you are optimally equipped, regardless if it should be powered with 12 V, 230 V or 400 V. With the economically diesel engine is the STE 5000 D a cheap alternative to petrol driven power generators.

**Power: 6.3 kW / 8.6 HP**

Starter battery not included in delivery

Manufacturer	Type	V	Ah
Varta	53030	12 V	30 Ah
Bayern Batterien	53030	12 V	30 Ah
Exide	53030	12 V	30 Ah
Banner Batterien	53030	12 V	30 Ah



## STE 5000 D Power Generator

### Logistic Information:

<b>Type:</b>	<b>STE 5000 D</b>	<b>Sales unit:</b>	1 pc
<b>Art.-No.:</b>	41.523.52	<b>20`:</b>	40 pcs
<b>Ident-No.:</b>	01017 / 01	<b>40`:</b>	80 pcs
<b>Bar Code:</b>	4006825 538960	<b>Weight:</b>	200 kgs (gross)
<b>Packing:</b>	1,040 x 585 x 965 mm		



# Economical and powerful for universal use!

# Einhell®

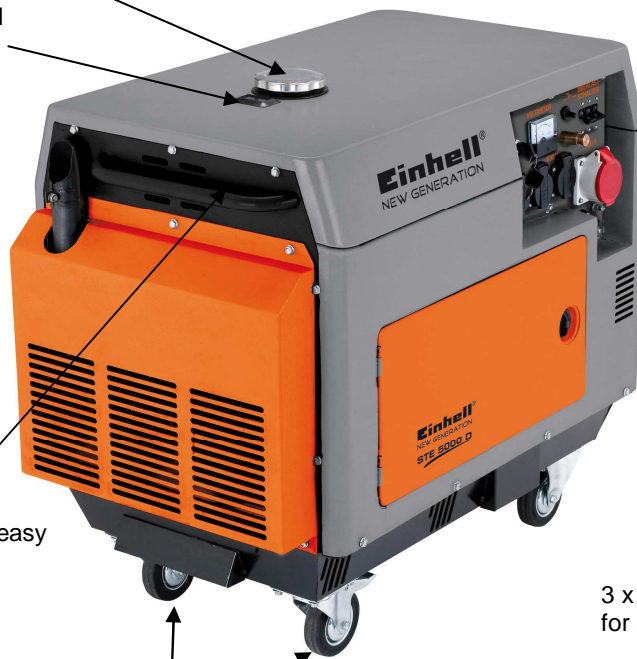
## NEW GENERATION

Large 13.3-litre tank for continuous power

Helpful tank level indicator

Push handle for easy transport

High grade wheels for easy transport

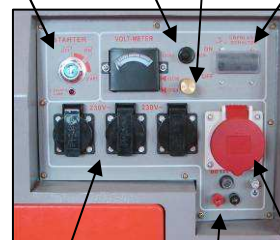


Electric starter

Decompression switch

Changeover switch  
230 V / 400 V

Over load switch for equipment reliability



12 volts connection

3 x 230 V socket (french)  
for simple current drain

1 x 400 V socket for high power devices

### Features:

- Economically diesel engine
- Large 13.3-litre tank for continuous power
- Overload assurance for 12 V
- Over load switch for equipment reliability
- 3 x 230 V socket for simple current drain
- 1 x 400 V socket for high power devices
- 1 x 12 V connection
- Changeover switch 230 V / 400 V
- Voltmeter
- Helpful tank level indicator
- Electric starter
- Decompression switch
- Oil deficiency safety device to protect the motor
- High grade wheels and push handle for easy transport

### Technical Data:

- Generator: Synchrony
- Continuous Power (S1): 1 x 4,200 watts at 400 V socket  
or:  
3 x 1,400 watts at 230 V socket
- Max. Power (S2 5 min): 1 x 5,000 watts at 400 V socket  
or:  
3 x 1,650 watts at 230 V socket
- Voltage: 3 x 230 V 1 ~ / 1 x 400 V 3 ~  
1 x 12 V d.c.
- Frequency: 50 Hz
- Type: Diesel engine
- Cylinder capacity: 418 cm<sup>3</sup>
- Max. Motor power: 6.3 kW / 8.6 HP
- Fuel: Diesel
- Tank capacity: 13.3 l
- Running time at 2/3 load: Approx. 11 hours
- Noise level: 96 dB (A)

### Logistic Information:

<b>Type:</b>	<b>STE 5000 D</b>	<b>Tool:</b>	<b>Power Generator</b>
<b>Art.-No.:</b>	41.523.52	<b>Sales unit:</b>	1 pc
<b>Ident-No.:</b>	01017 / 01	<b>20``:</b>	40 pcs
<b>Bar Code:</b>	4006825 538960	<b>40``:</b>	80 pcs
<b>Packing:</b>	1,040 x 585 x 965 mm	<b>Weight:</b>	200 kgs (gross)

