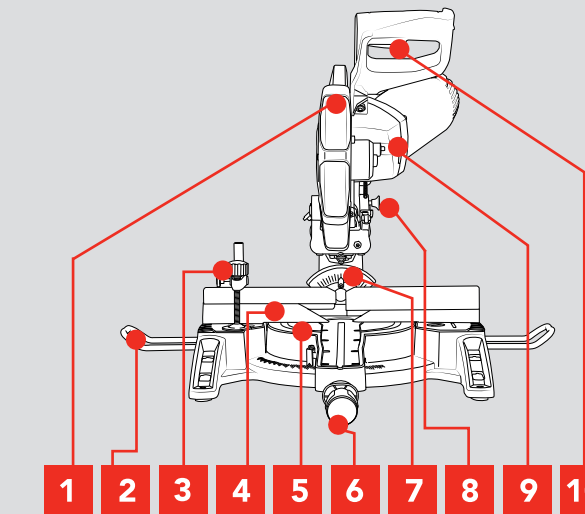


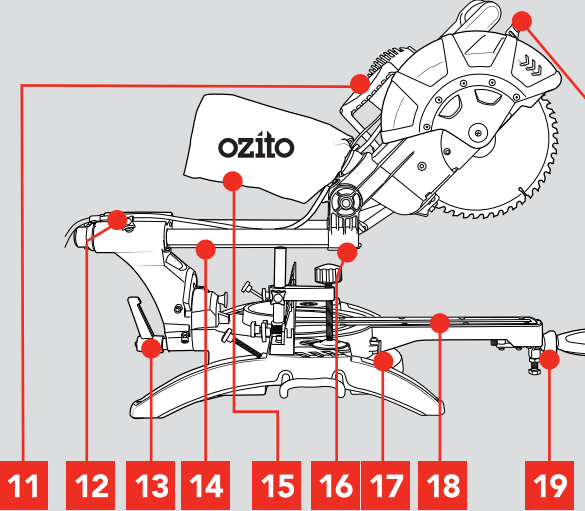
KNOW YOUR PRODUCT

MITRE SAW

- 1. Retractable Safety Guard
- 2. Material Support Bar
- 3. Material Clamp
- 4. Fence
- 5. Mitre Table
- 6. Mitre Table Lock
- 7. Bevel Angle Pointer
- 8. Lock Down Pin
- 9. Spindle Lock Button
- 10. Trigger



- 11. Carry Handle
- 12. Slide Lock
- 13. Bevel Lock
- 14. Dual Rail Slide Bar
- 15. Dust Bag
- 16. Laser Guide
- 17. Mitre Angle Pointer
- 18. Table Insert
- 19. Mitre Release
- 20. Release Lever



ONLINE MANUAL

Scan this QR Code with your mobile device to take you to the online manual.



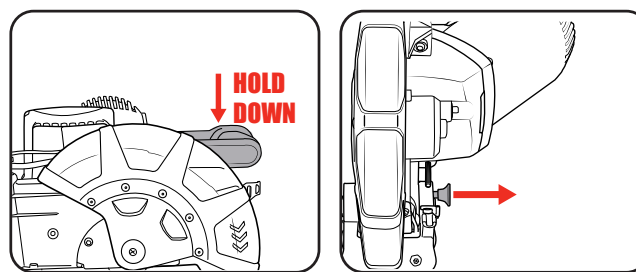
SETUP & PREPARATION

1. ASSEMBLY

WARNING! ENSURE THE TOOL IS SWITCHED OFF AND DISCONNECTED FROM THE POWER SUPPLY BEFORE PERFORMING ANY OF THE FOLLOWING PROCEDURES.

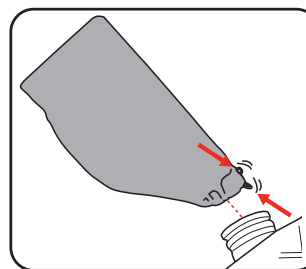
Unpacking

- Remove foam packaging materials and using the carry handle, carefully lift the mitre saw from its box and place it on a level work surface.
- Release cutting head from its transport position. While holding the head of the saw down release the lock down pin.



Dust Bag

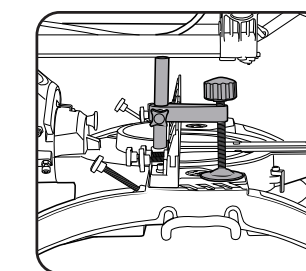
- Squeeze the clamp at the end of the dust bag, place over the dust extraction port.



Material Clamp

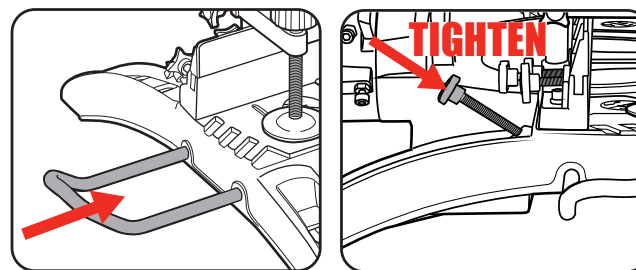
Material clamp will assist securing timber when making cuts.

Note: The clamp can be mounted on either the left or right.



Material Support Bars

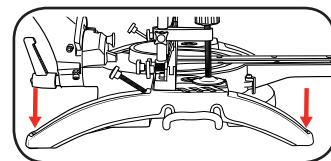
- Insert each bar into the two holes located on both sides of the base.
- Tighten screw when in place.



2. SET-UP AND ADJUSTMENTS

Bench Mounting

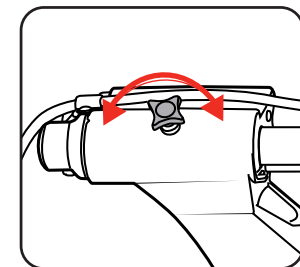
The base of the saw has four bench mounting holes (1 each corner) that can be used to mount it to a workbench or mitre saw stand. Use four screws or bolts (not included) to secure.



Note: If required, the Mitre Saw can be mounted onto a 13mm piece (or thicker) of plywood which can then be clamped to the work bench or mitre saw stand. This provides the flexibility to transport the Mitre Saw to other work areas

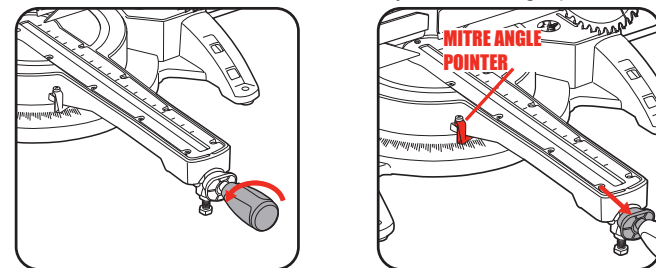
Slide Lock

When cutting a narrow piece of wood it is not necessary to use the slide mechanism. In these circumstances, push back the cutting head and ensure the slide locking knob is tight to prevent the cutting head from sliding.



Mitre Angle Adjustment

- Loosen mitre table lock
- While pulling the mitre release set the desired mitre angle (left or right) as shown by the mitre angle pointer



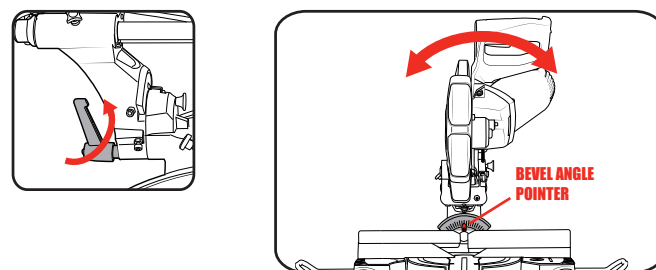
Note: The mitre table features positive click stops at 0°, 15°, 22.5°, 30° and 45° for quick setting of common mitre angles.

- Tighten mitre table lock at selected angle

WARNING! ENSURE THE MITRE TABLE LOCK IS TIGHT BEFORE MAKING A CUT. FAILURE TO DO SO MAY RESULT IN THE MITRE TABLE MOVING DURING OPERATION AND CAUSE SERIOUS PERSONAL INJURY.

Bevel Angle Adjustment

- Loosen bevel lock.
- Tilt the cutting head to the desired bevel angle (left or right) as shown by the bevel angle pointer



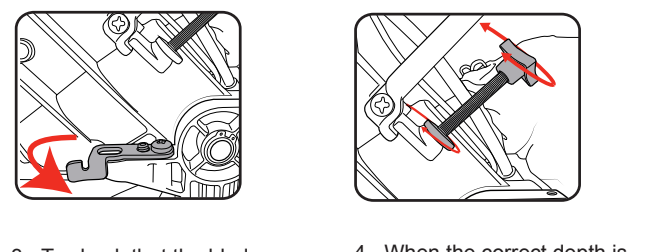
- Tighten bevel lock at selected angle

WARNING! ENSURE THE BEVEL LOCK IS TIGHT BEFORE MAKING A CUT. FAILURE TO DO SO MAY RESULT IN THE CUTTING HEAD MOVING DURING OPERATION AND CAUSE SERIOUS PERSONAL INJURY.

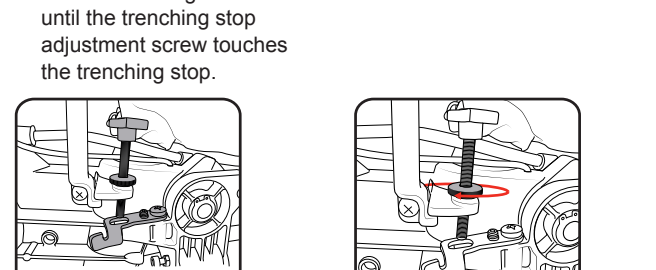
Trenching

Trenching refers to restricting the depth of cut and permits a "trench" to be cut in the workpiece.

- Ensure the cutting head is raised, move the trenching stop to the right as far as it will go.
- To adjust the trenching depth rotate the trenching depth adjustment screw.

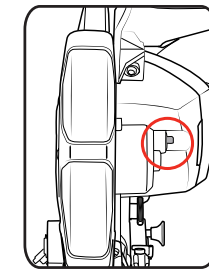


- To check that the blade stops at the desired position, lower the cutting head until the trenching stop adjustment screw touches the trenching stop.
- When the correct depth is set. Lock it in position using the trenching depth lock nut.



Spindle Lock

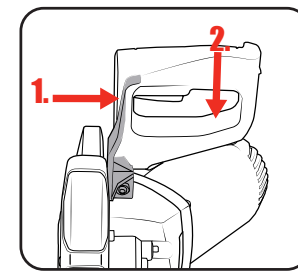
The spindle lock prevents the blade in the saw from rotating. Depress and hold the spindle lock while installing, changing, or removing the blade



Retractable Safety Guard

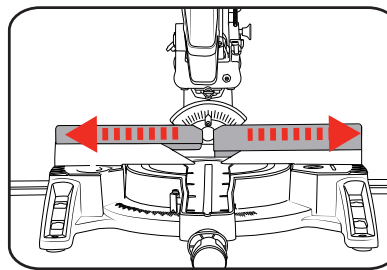
The lower guard provides protection to your hands and limbs when the mitre saw head is in the up position. During the operation of the saw, when the saw is turned on and you are making a cut, the lower guard retracts over the upper guard as the saw is lowered into the work piece.

- To retract the lower guard, slide the release lever right with your thumb and press handle down.



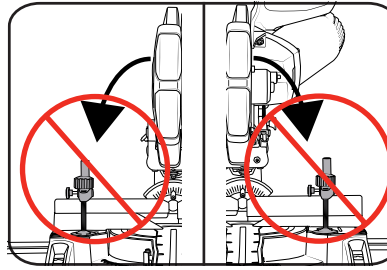
Fence

Make sure that no part of the tool contacts the upper fence when bevel or compound mitre cutting. Always make a dry run with the saw turned off and check clearance. Tighten securely before making a cut.



Material Clamp

Depending on the cut, the material clamp will need to be mounted on the appropriate side. When performing bevel cuts, the work clamp must be on the opposite side of the bevel (otherwise it will interfere with the cutting action).



OPERATION

3. TYPES OF CUTS

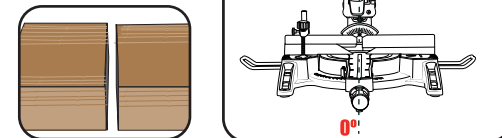
CAUTION! DO NOT USE THE MITRE SAW TO CUT METAL OR MASONRY.

The tool is recommended for use with a residual current device with a rated residual current of 30mA or less.

When cutting a narrow piece of wood, it is not necessary to use the slide mechanism.

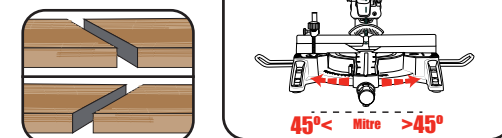
Straight Cutting

A straight cut is made by cutting the grain of the workpiece. A 90° straight cut is made with the mitre scale set in the 0°.



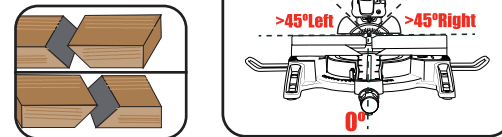
Mitre Cuts

Mitre cuts are made with the mitre scale set at an angle other than 0°



Bevel Cutting

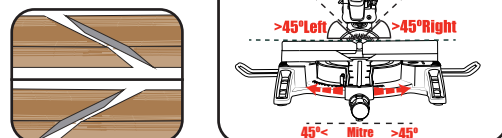
A bevel cut is made by cutting across the grain of the workpiece with the blade angled to the mitre table.



Note: For Bevel Cuts ensure the rear fence is adjusted for blade clearance.

Compound Mitre Cuts

A compound mitre cut involves using a mitre angle and a bevel angle at the same time.

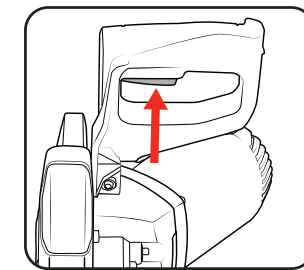


CAUTION! FOR ALL TYPES OF CUTS ENSURE THE SAW IS LOCKED INTO POSITION.

4. OPERATING THE SAW

Turning On and Off

- To turn the mitre saw on, squeeze the trigger switch
- To turn the mitre saw off, release the trigger switch



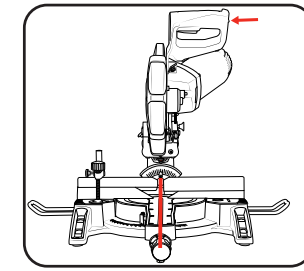
Note: Before performing a cut, ensure the blade is at full speed. Failure to do this may cause the blade to become blunt and cause the blade to lock-up.

Laser Guide

WARNING! DO NOT STARE DIRECTLY AT THE LASER BEAM.

A laser line is projected onto the material you wish to cut, providing an exact guide for the cut.

- To switch the laser guide on, press the laser guide switch to the On (I) position.
- To switch the laser guide off, press the laser guide switch to the Off (0) position.

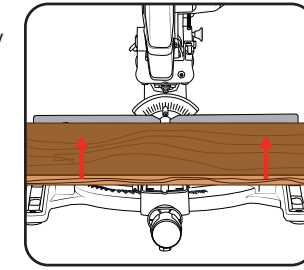


Note: Ensure that the laser guide is switched off when the saw is not in use.

Workpiece

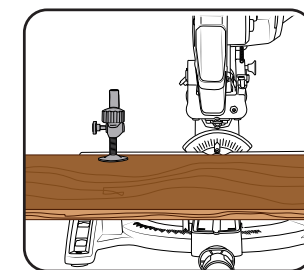
Place the workpiece flat on the mitre table with one edge securely against the rear fence.

Note: If the workpiece is warped, ensure the convex side is against the rear fence.



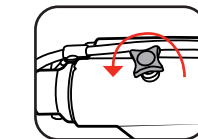
Material Clamp

It is extremely important to always secure the workpiece properly and tightly with the material clamp.

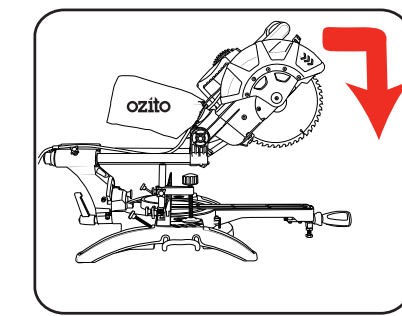


Slide Action

When cutting wide pieces of wood, ensure the slide lock is loose.



- First pull carriage fully, slide the release lever right with your thumb and press handle down.



- Push carriage toward the rear fence.

