

## MAINTENANCE

**WARNING:** BEFORE CLEANING YOUR COMPRESSOR OR CARRYING OUT ANY MAINTENANCE PROCEDURE, ENSURE THE COMPRESSOR IS SWITCHED OFF AND DISCONNECTED FROM THE POWER SUPPLY.

**WARNING:** WAIT UNTIL THE COMPRESSOR HAS COMPLETELY COOLED DOWN TO PREVENT BURNS.

### Cleaning

• Keep the ventilation vents of the Compressor clean at all times, if possible, prevent foreign matter from entering the vents.

• After each use, blow air through the Compressor housing to ensure it is free from all dust particles which may build up. Build up of dust particles may cause the Compressor to overheat and fail.

• If the enclosure of the Compressor requires cleaning do not use solvents but a moist soft cloth only. Never let any liquid get inside the Compressor; never immerse any part of the Compressor into a liquid.

**Note:** Ozito Industries will not be responsible for any damage or injuries caused by the repair of the Compressor by an unauthorised person or by mishandling of the Compressor.

**IMPORTANT:** STORE THE COMPRESSOR ONLY IN A DRY LOCATION WHICH IS NOT ACCESSIBLE TO UNAUTHORISED PERSONS.

## DESCRIPTION OF SYMBOLS

<b>V</b>	Volts	<b>W</b>	Watts
<b>dc</b>	Direct current	<b>mA</b>	Milliamperes
	Warning		Indoor use only
	Read instruction manual		

## SPARE PARTS

Spare parts can be ordered from the Special Orders Desk at your local Bunnings Warehouse or Homebase store.

For further information, or any parts visit

[www.ozito-diy.co.uk](http://www.ozito-diy.co.uk) or contact Ozito Customer Service:

Great Britain: 0151 294 4488

Ireland: 1850 882711

E-mail: [enquires@ozito-diy.co.uk](mailto:enquires@ozito-diy.co.uk)

## ELECTRICAL SAFETY

**WARNING!** When using mains-powered tools, basic safety precautions, including the following, should always be followed to reduce risk of fire, electric shock, personal injury and material damage.

Read the whole manual carefully and make sure you know how to switch the tool off in an emergency, before operating the tool.

Save these instructions and other documents supplied with this tool for future reference.

Before you connect the equipment to the power supply make sure that the data on the rating plate are identical to the mains data.

If the supply cord is damaged, it must be replaced by an electrician or a power tool repairer in order to avoid a hazard.

## GENERAL POWER TOOL SAFETY WARNINGS-PERSONAL SAFETY

**WARNING!** Read all safety warnings and all instructions. Failure to follow the warnings and instructions may result in electric shock, fire and/or serious injury.

Save all warnings and instructions for future reference. The term "power tool" in the warnings refers to your mains-operated (corded) power tool or battery-operated (cordless) power tool.

1. Work area safety
  - a. Keep work area clean and well lit. Cluttered or dark areas invite accidents.
  - b. Do not operate power tools in explosive atmospheres, such as in the presence of flammable liquids, gases or dust. Power tools create sparks which may ignite the dust or fumes.
  - c. Keep children and bystanders away while operating a power tool. Distractions can cause you to lose control.
2. Electrical safety
  - a. Power tool plugs must match the outlet. Never modify the plug in any way. Do not use any adapter plugs with earthed (grounded) power tools. Unmodified plugs and matching outlets will reduce risk of electric shock.
  - b. Avoid body contact with earthed or grounded surfaces, such as pipes, radiators, ranges and refrigerators. There is an increased risk of electric shock if your body is earthed or grounded.
  - c. Do not expose power tools to rain or wet conditions. Water entering a power tool will increase the risk of electric shock.
  - d. Do not abuse the cord. Never use the cord for carrying, pulling or unplugging the power tool. Keep cord away from heat, oil, sharp edges or moving parts. Damaged or entangled cords increase the risk of electric shock.
  - e. When operating a power tool outdoors, use an extension cord suitable for outdoor use. Use of a cord suitable for outdoor use reduces the risk of electric shock.
  - f. If operating a power tool in a damp location is unavoidable, use a residual current device (RCD) protected supply. Use of an RCD reduces the risk of electric shock.
3. Personal safety
  - a. Stay alert, watch what you are doing and use common sense when operating a power tool. Do not use a power tool while you are tired or under the influence of drugs, alcohol or medication. A moment of inattention while operating power tools may result in serious personal injury.
  - b. Use personal protective equipment. Always wear eye protection. Protective equipment such as dust mask, non-skid safety shoes, hard hat, or hearing protection used for appropriate conditions will reduce personal injuries.
  - c. Prevent unintentional starting. Ensure the switch is in the off-position before connecting to power source and/or battery pack, picking up or carrying the tool. Carrying power tools with your finger on the switch or energising power tools that have the switch on invites accidents.

- d. Remove any adjusting key or wrench before turning the power tool on. A wrench or a key left attached to a rotating part of the power tool may result in personal injury.
- e. Do not overreach. Keep proper footing and balance at all times. This enables better control of the power tool in unexpected situations.
- f. Dress properly. Do not wear loose clothing or jewellery. Keep your hair, clothing and gloves away from moving parts. Loose clothes, jewellery or long hair can be caught in moving parts.
- g. If devices are provided for the connection of dust extraction and collection facilities, ensure these are connected and properly used. Use of dust collection can reduce dust-related hazards.
4. Power tool use and care
  - a. Do not force the power tool. Use the correct power tool for your application. The correct power tool will do the job better and safer at the rate for which it was designed.
  - b. Do not use the power tool if the switch does not turn it on and off. Any power tool that cannot be controlled with the switch is dangerous and must be repaired.
  - c. Disconnect the plug from the power source and/or the battery pack from the power tool before making any adjustments, changing accessories, or storing power tools. Such preventive safety measures reduce the risk of starting the power tool accidentally.
  - d. Store idle power tools out of the reach of children and do not allow persons unfamiliar with the power tool or these instructions to operate the power tool. Power tools are dangerous in the hands of untrained users.
  - e. Maintain power tools. Check for misalignment or binding of moving parts, breakage of parts and any other condition that may affect the power tool's operation. If damaged, have the power tool repaired before use. Many accidents are caused by poorly maintained power tools.
  - f. Keep cutting tools sharp and clean. Properly maintained cutting tools with sharp cutting edges are less likely to bind and are easier to control.
  - g. Use the power tool, accessories and tool bits etc. in accordance with these instructions, taking into account the working conditions and the work to be performed. Use of the power tool for operations different from those intended could result in a hazardous situation.
5. Service
  - a. Have your power tool serviced by a qualified repair person using only identical replacement parts. This will ensure that the safety of the power tool is maintained.

## AIR COMPRESSOR SAFETY WARNINGS

This appliance is not intended for use by young or infirm persons unless supervised by a responsible person to ensure that they can use the appliance safely. Young children should be supervised to ensure that they do not play with play with the appliance.

- When using the compressor, ensure you are parked in a safe, well lit location, off the road and with the hand brake engaged.
- Ensure your personal safety is not at risk and never use the Automotive Mini Compressor while the car is in motion.
- Do not place the hose end against any part of your body when turned on, as this may infuse air into your blood stream putting your health at serious risk.
- Do not make any alterations to this Compressor. Only use the adaptors supplied with this product.
- Use this product only in accordance with operation instructions included in this manual.
- If the vehicle fuse is blown, only replace with identical rated fuse.
- Inspect each part before use. Do not use if bent, broken, melted, burnt or if the unit appears to be damaged.
- Check the tyre pressure before inflating. Never exceed the suggested pressure of the item being inflated. If suggested pressure is exceeded, the item being inflated may burst.
- Do not bend or pinch the air hose while the Compressor is in use.
- It is not suggested that the Compressor work continuously for more than 10 minutes. If 10 minutes of use has been reached, turn it off and let it cool for 10 minutes before using again.
- If the Compressor is making abnormal sounds or its temperature is quite high, turn off the power straight away and let it cool for at least 10 minutes before trying again. Improper use may result in damage of the Compressor.

- Do not leave unattended and operating. Keep out of reach of children.
- Put the Compressor in a dry place if it is not in use for an extended period of time.
- Keep the Compressor away from flammable liquid or gas. Do not allow the Compressor to become wet.
- Never put the connector and adaptors into your mouth, ear or eye. They are not toys.

# ozito

## AIR COMPRESSOR

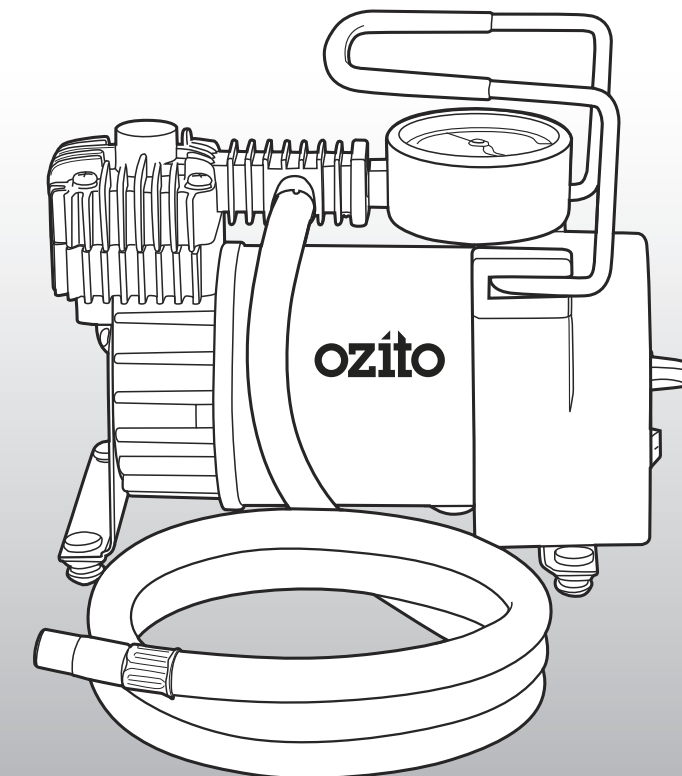
12V

### ORIGINAL INSTRUCTIONS

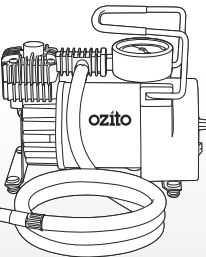
#### SPECIFICATIONS

Voltage: 12V  
 Max Current: 14Amp  
 Max Pressure: 10.3bar (150psi)  
 Flow Rate: 35 l/min  
 Hose Length: 1.5m  
 Weight: 1.8kg

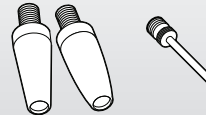
[ozito-diy.co.uk](http://ozito-diy.co.uk)



### WHAT'S IN THE BOX



Mini Compressor



Accessories x 3

# 3 YEAR REPLACEMENT WARRANTY

AMC-3000U

## WARRANTY

All of our products undergo strict quality checks to ensure that they reach you in perfect condition. In the unlikely event that your device develops a fault, please contact our service department at the address shown on this guarantee card. You can also contact us by telephone using the customer service number shown. Please note the following terms under which guarantee claims can be made:

1. These warranty terms regulate additional warranty services, which the manufacturer mentioned below promises to buyers of its new products in addition to their statutory guarantee claims are not affected by this guarantee. Our guarantee is free of charge to you.

2. The warranty services only covers defects due to material or manufacturing faults on a product which you have bought from the manufacturer mentioned below are limited to either the rectification of said defects on the product or the replacement of the product, whichever we prefer.

Please note that our devices are not designed for use in commercial, trade or professional applications. A guarantee contract will not be created if the device has been used by commercial, trade or industrial business or has been exposed to similar stresses during the guarantee period.

3. The following are not covered by our guarantee:

- Damage to the device caused by a failure to follow the assembly instructions or due to incorrect installation, a failure to follow the operating instructions (for example connecting it to an incorrect mains voltage or current type) or a failure to follow the maintenance and safety instructions or by exposing the device to abnormal environmental conditions or by lack of care and maintenance.
- Damage to the device caused by abuse or incorrect use (for example overloading the device or the use of unapproved tools or accessories), ingress of foreign bodies into the device (such as sand, stones or dust, transport damage), the use of force or damage caused by external forces (for example by dropping it).

- Damage to the device or parts of the device caused by normal or natural wear or tear or by normal use of the device.

4. Your Product is guaranteed for a period of 36 months from the original date of purchase and is intended for DIY (Do It Yourself) use only. Lithium Ion batteries and chargers are covered by a 12 month warranty. Warranty excludes consumable parts. Guarantee claims should be submitted before the end of the guarantee period within two weeks of the defect being noticed. No guarantee claims will be accepted after the end of the guarantee period. The original guarantee period remains applicable to the device even if repairs are carried out or parts are replaced. In such cases, the work performed or parts fitted will not result in an extension of the guarantee period, and no new guarantee will become active for the work performed or parts fitted. This also applies if an on-site service is used.

IN ORDER TO MAKE A CLAIM UNDER THIS WARRANTY YOU MUST RETURN THE PRODUCT TO THE PLACE OF PURCHASE WITH YOUR REGISTER RECEIPT.

Please refer to the restrictions of this warranty concerning wearing parts, consumables and missing parts as set out in the service information in these operating instructions.

CUSTOMER SERVICE HELPLINE  
 GB: 0151 294 4488  
 IRL: 1850 882711  
[Ozito-diy.co.uk](http://Ozito-diy.co.uk)

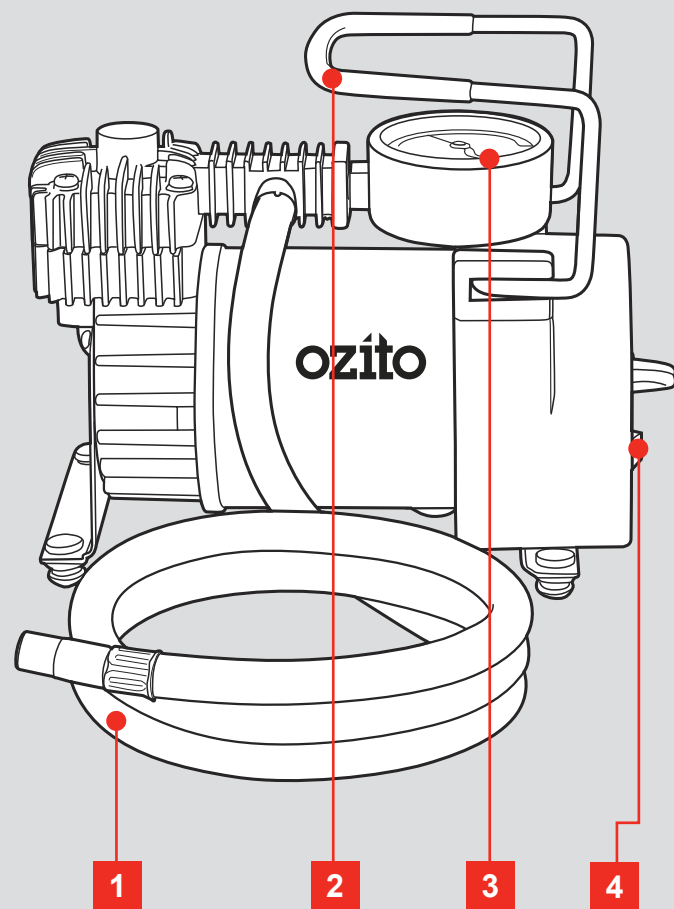
## TROUBLESHOOTING

Problem	Cause	Solution
The compressor does not start	Compressor not connected to the power	Connect the 12V socket to a 12V DC outlet
	Insufficient supply voltage	Try another 12V outlet
	Fuse needs replacing	Replace Fuse
The compressor starts but there is no pressure	Loose hose connections	Check the compressed air hose and adaptor and replace if necessary
	The seals are damaged	Check the seals and have any damaged seals replaced by a service centre

# KNOW YOUR PRODUCT

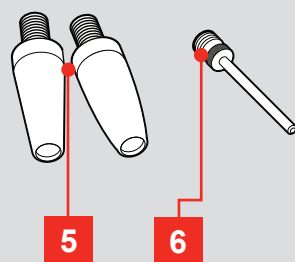
## AIR COMPRESSOR

- 1 Air Hose
- 2 Pressure Gauge
- 3 Carry Handle
- 4 On/Off Switch



## ACCESSORIES

- 5 General Purpose Adaptors
- 6 Needle Inflator



## ONLINE MANUAL

Scan this QR Code with your mobile device to take you to the online manual.

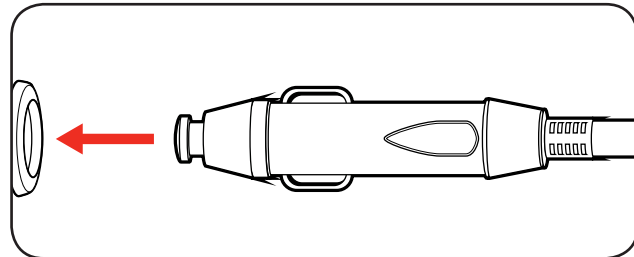


# OPERATION

## 1. SWITCHING ON & OFF

### Connecting to a 12V outlet

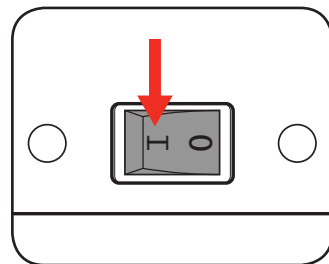
- 1 Connect the 12V socket to 12V DC outlet which can be found in your vehicle.



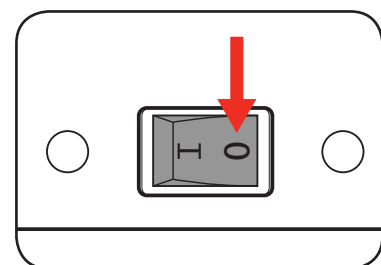
**Note:** Check car outlet for sufficient power up to 168W.

### Switching On and Off

- 1 To start the air compressor press the on/off switch to the on position "I".



- 2 Press the on/off switch into the off position "0" to stop the compressor.



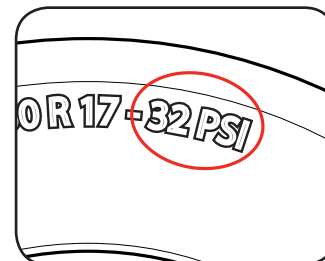
**WARNING:** COMPRESSED AIR CAN BE DANGEROUS. NEVER POINT THE OUTLET NOZZLE TOWARDS ANY PART OF YOUR BODY OR ANOTHER PERSON.

## 2. PRESSURE GAUGE

### Using the Pressure Gauge

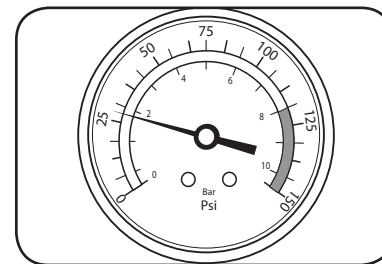
The pressure gauge has dual readings for reading pressures in PSI or BAR to help match the units of the items required pressure.

- 1 Identify the required pressure for the item to be inflated.

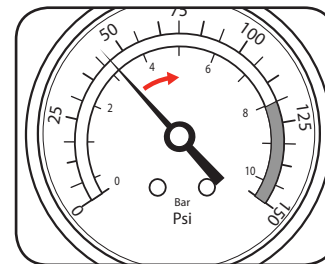


**Note:** The required pressure should be labeled on the surface of the item.

- 2 Once the air hose is connected, the pressure gauge will display the current pressure.

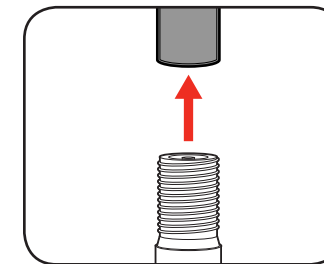


- 3 Once the compressor is switched on and the item is being inflated, the pressure reading will increase on the pressure gauge.

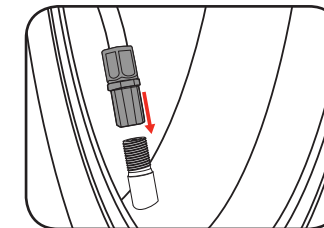


## 3. INFLATING TYRES

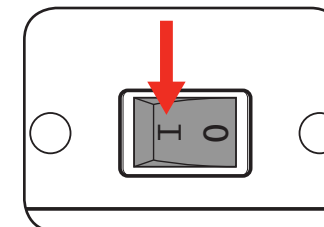
- 1 Unscrew the cap on the tyre air valve.



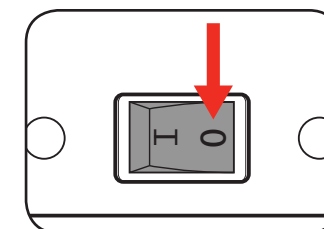
- 2 Attach the air hose by screwing the end of the hose in a clockwise direction.



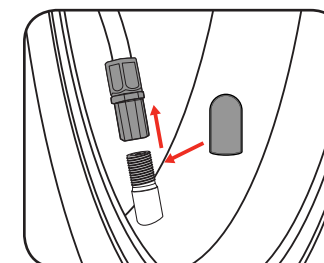
- 3 Press the on/off switch into the on position "I".



- 4 Once the pressure gauge reads the required pressure, switch the compressor off.



- 5 Unscrew the air hose and tighten plastic cap onto the tyre air valve.

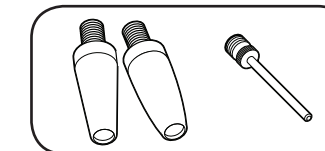


## 4. INFLATING SPORTING EQUIPMENT

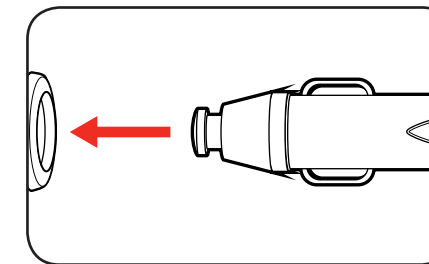
**IMPORTANT:** BEFORE CONNECTING OR DISCONNECTING ACCESSORIES, ALWAYS MAKE SURE THAT THE COMPRESSOR IS OFF.

3 valve adaptors are supplied with the automotive mini compressor for inflating sporting equipment.

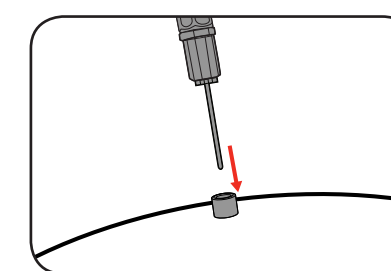
- 1 Screw the required adaptor clockwise into the end of the air hose.



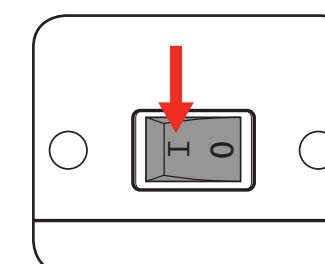
- 2 Connect the 12V socket to a power supply.



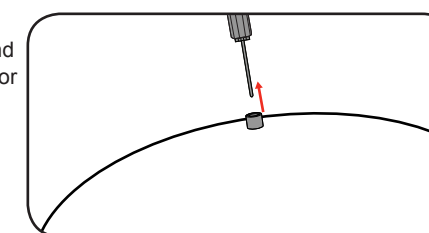
- 3 Insert the connected adaptor into the inflatable item.



- 4 Press the on/off switch into the on position "I" to inflate the item to the required pressure.



- 5 Switch the compressor off and remove the adaptor from the inflated item.



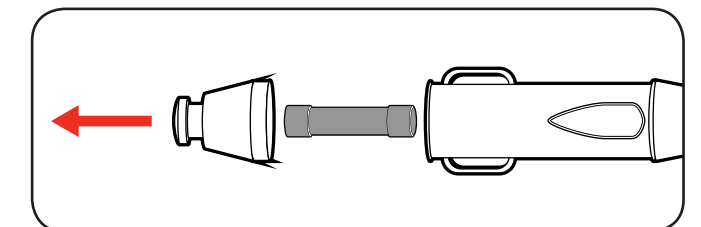
**NOTE:** The same process can be used to inflate balloons or inflatable toys using the general purpose adaptors instead of the ball adaptor.

## 5. REPLACING FUSE

**WARNING:** ENSURE THE TOOL IS SWITCHED OFF AND DISCONNECTED FROM THE POWER SUPPLY BEFORE PERFORMING ANY OF THE FOLLOWING STEPS.

The 12V socket is fitted with a 15A fuse to protect the air compressor. If the compressor has stopped working, the fuse may need to be replaced.

- 1 Unscrew the top of the 12V socket to expose the fuse.



- 2 Replace the 15A fuse and screw the top back onto the 12V socket.

