

Einhell®

NEW GENERATION

The little power station for your home!

Tank capacity 4 Litres

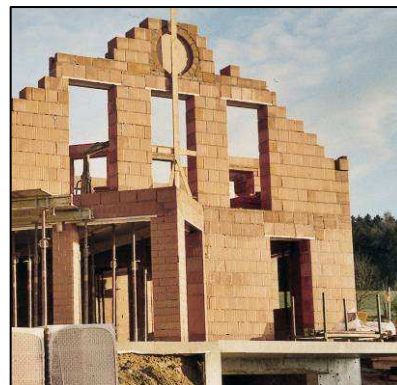


This "power station" supplies energy and provides security. Power will be available whenever it is needed. Power failures or insufficient current supply are no longer a problem; whether during camping, at building sites, in homes or cottages, on boats or in the garden. **This equipment can be used nearly everywhere, and, with its continuous power supply of 650 Watt, provides sufficient power for many applications. The large four-litre tank ensures continuous operation for six hours at 2/3 load.** The power generator is powered by a high-quality 2-stroke engine and is equipped with an overload switch.

Power: 1.1kW | 1.5 HP



230 V



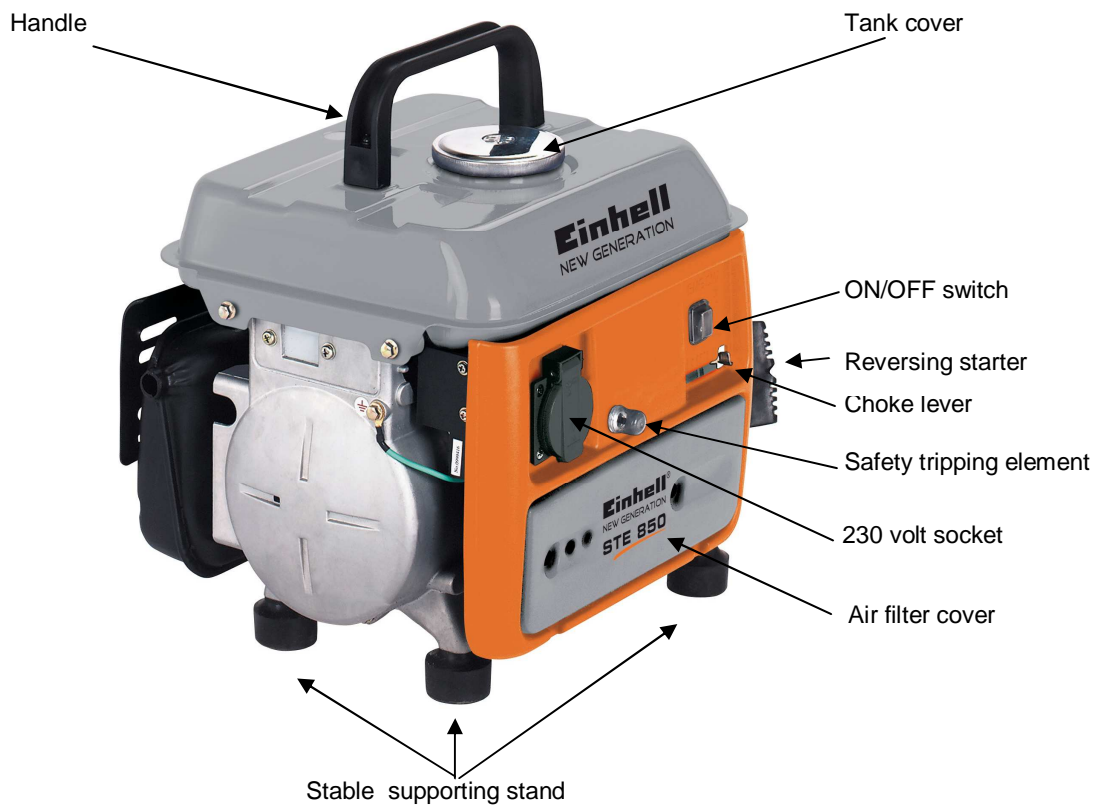
STE 850 Power Generator

Logistic Information:

Type:	STE 850	Sales unit:	1pc
Art. No.:	41.512.20	20`:	558 pcs
Ident. No.:	01015	40`:	1004 pcs
Bar Code:	4006825 512397	40`HC:	-- pcs
Packing:	410x340x365 mm	Weight:	20.5 kgs (gross)



The little power station for your home!



Features:

- Powerful 2-stroke drive engine
- Large 4-litre tank for continuous operation
- Carrying handle for easy transport
- Stable supporting stand
- Safety tripping element for equipment protection
- ON/OFF switch
- 1x 230 v socket for easy current drain
- Reversing starter to start the machine

Technical Data:

- | | |
|----------------------------|---------------------------------|
| - Generator: | Synchronous |
| - Continuous power: | 650 watts |
| - Max. Power: | 800 watts (S2 15 Min.) |
| - Rated voltage: | 230 V / 1 ~ |
| - Rated current: | 2.8 A / 1 ~ |
| - Frequency: | 50 Hz |
| - Drive engine design: | 1 Cylinder, 2-stroke air-cooled |
| - Displacement: | 63 cm ³ |
| - Max. Power: | 1, 1 kW / 1, 5 HP |
| - Fuel: | Mixture 1:50 (2%) |
| - Tank capacity: | 4 l |
| - Consumption at 2/3 load: | approx. 0, 7 l/h |
| - Protection type: | IP 23 |
| - Spark plug: | NGK BPR5ES |

Logistic Information:

Type:	STE 850	Tool:	Power Generator
Art. No.:	41.512.20	Sales unit:	1pc
Ident. No.:	01015	20`:	558 pcs
Bar Code:	4006825 512397	40`:	1004 pcs
Packing:	410x340x365 mm	40`HC:	-- pcs
		Weight:	20.5 kgs (gross)

