

The durable energy source
for all cases!

Einhell[®]
NEW GENERATION

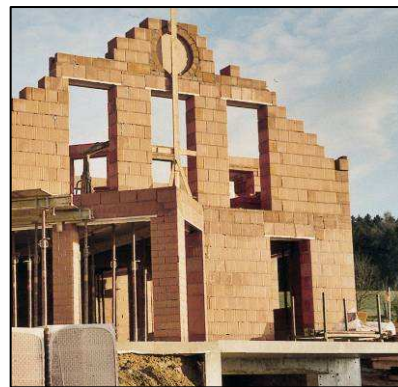
Tank capacity 15 Litres



This "power station" supplies energy and provides security.

Power will be available whenever it is needed. Power failures or insufficient current supply are no longer a problem; whether during camping, at building sites, in homes or cottages, on boats or in the garden. **This equipment can be used nearly everywhere, and, with its continuous power supply of 2,000 Watt, provides sufficient power for many applications. The large 15-litre tank ensures continuous operation for eleven hours at 2/3 load.** The power generator is powered by a high-quality 4-stroke engine and is equipped with an overload switch.

Power: 4.77kW | 6.5 HP



STE 2500/1 Power Generator

Logistic Information:

Type:	STE 2500/1	Sales unit:	1 pc
Art. No.:	41.523.09	20``:	160 pcs
Ident. No.:	01017	40``:	328 pcs
Bar Code:	4006825 539899	40``HC:	-- pcs
Packing:	625 x 535 x 525 mm	Weight:	48 kgs (gross)



Abbildungen können nicht im Serien-Lieferumfang enthaltenes Zubehör darstellen / Illustrations may contain accessories not included in the standard scope of delivery. Abbildungen ähnlich, produktionsbedingte Abweichung vorbehalten / Illustrations will be similar (in design), production-related modifications reserved without prior notice.

File: S:\shared-pool\Product-Dokumentation\T-Produktbeschreibung\30_n0t\Originale_Englisch_PA04\4152309_01017.doc
Erstelldatum/create date: 22.06.2007 11:24:00Aktualisiert/up dated: 28.06.2007

The durable energy source for all cases!

Einhell®

NEW GENERATION

Large 15-litre tank for continuous power

Convenient fuel gauge

Air filter

Fuel tap

Linkage to start the motor



2x 230 V socket (french) for simple current drain

Over load switch for equipment reliability

Practical voltmeter

Ignition key switch

Features:

- Powerful 4-stroke drive motor
- Large 15-litre tank for continuous power
- Oil deficiency safety device to protect the motor
- Overload switch for equipment reliability
- 2x 230 V socket for simple current drain
- Ignition key switch
- Practical voltmeter
- Convenient fuel gauge
- Linkage to start the motor

Technical Data:

- | | |
|-----------------------------|---------------------------------|
| - Generator: | Synchronous |
| - Continuous Power: | 2,000 watts |
| - Max. Power: | 2,200 watts (S2 5 Min.) |
| - Voltage: | 2 x 230 V / 1 ~ |
| - Nominal current: | 8.7 A / 1 ~ |
| - Frequency: | 50 Hz |
| - Type: | 1 cylinder, 4-stroke air-cooled |
| - Cylinder capacity: | 196 cm ³ |
| - Max. Motor power: | 4.77 kW / 6, 5 HP |
| - Fuel: | Normal lead-free |
| - Tank capacity: | 15 litres |
| - Running time at 2/3 load: | Approx. 11 hours |
| - Noise level: | 93 dB (A) |

Logistic Information:

Type:	STE 2500/1	Tool:	Power Generator
Art. No.:	41.523.09	Sales unit:	1 pc
Ident. No.:	01017	20`:	160 pcs
Bar Code:	4006825 539899	40`:	328 pcs
Packing:	625 x 535 x 525 mm	40` HC:	-- pcs
		Weight:	48 kgs (gross)



Abbildungen können nicht im Serien-Lieferumfang enthaltenes Zubehör darstellen / Illustrations may contain accessories not included in the standard scope of delivery. Abbildungen ähnlich, produktionsbedingte Abweichung vorbehalten / Illustrations will be similar (in design), production-related modifications reserved without prior notice.

File: S:\shared-pool\Product-Dokumentation\T-Produktbeschreibung\30_n0\Originale_Englisch_PA04\4152309_01017.doc
Erstelldatum/create date: 22.06.2007 11:24:00Aktualisiert/up dated: 28.06.2007