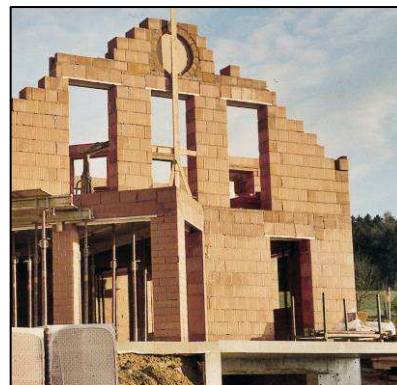
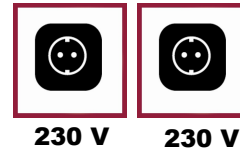


Tank capacity 15 l



This "power station" supplies energy and provides security. Power will be available whenever it is needed. Power failures or insufficient current supply are no longer a problem; whether during camping, at building sites, in homes or cottages, on boats or in the garden. **This equipment can be used nearly everywhere, and, with its continuous power supply of 2,000 Watt, provides sufficient power for many applications. The large 15-litre tank ensures continuous operation for eleven hours at 2/3 load.** The power generator is powered by a high-quality 4-stroke engine and is equipped with an overload switch.

Power: 4.77kW / 6.5 HP

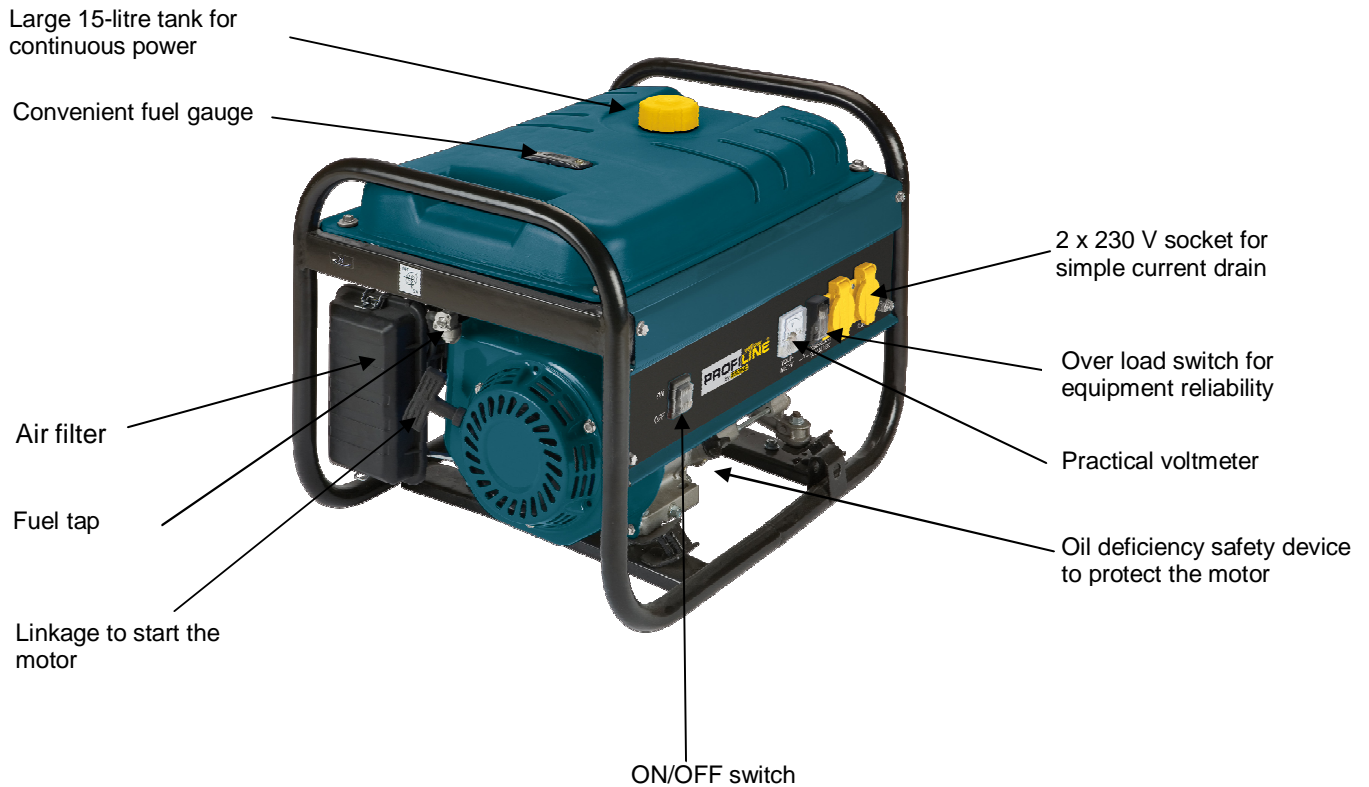


YPL 2300 Power Generator

Logistic Information:

Type:	YPL 2300	Sales unit:	1 pc
Art.-No.:	41.523.71	20`:	180 pcs
Ident-No.:	01016	40`:	380 pcs
Bar Code:	4006825 536164	40` HC:	475 pcs
Packaging:	635 x 445 x 480 mm	Weight:	41,2 kgs (gross)





Features:

- **Powerful 4-stroke drive motor**
- **Large 15-litre tank for continuous power**
- Oil deficiency safety device to protect the motor
- Over load switch for equipment reliability
- 2 x 230 V socket for simple current drain
- Practical voltmeter
- Convenient fuel gauge
- Linkage to start the motor

Technical Data:

- | | |
|-----------------------------|---------------------------------|
| - Generator: | Synchronous |
| - Continuous power (S1): | 1 x 2,000 W |
| - Max. power (S2 5 min): | 1 x 2,200 W |
| - Nominal current: | 2 x 230 V / 1 ~ |
| - Frequency: | 50 Hz |
| - Type: | 1 cylinder, 4-stroke air-cooled |
| - Cylinder capacity: | 196 cm ³ |
| - Max. motor power: | 4.77 KW / 6.5 PS |
| - Fuel: | Normal lead free |
| - Tank capacity: | 15 l |
| - Running time at 2/3 load: | Approx.: 11 hours |
| - Noise level: | 95 dB(A) |

Logistic Information:

Type:	YPL 2300	Tool:	Power Generator
Art.-No.:	41.523.71	Sales unit:	1 pc
Ident-No.:	01016	20``:	180 pcs
Bar Code:	4006825 536164	40``:	380 pcs
Packaging:	635 x 445 x 480 mm	40``HC:	475 pcs
		Weight:	41,2 kgs (gross)

