

**POWER
CRAFT**

2000W PRESSURE WASHER

PCPW-160

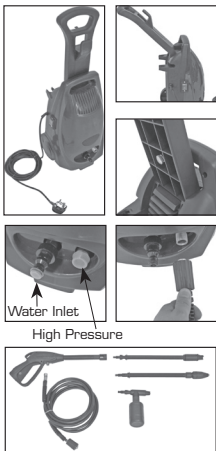
QUICK START GUIDE

Easy steps to getting started:

ALWAYS READ THE SAFETY WARNINGS PRIOR TO USE.

Pressure Washer Assembly (If in doubt, ALWAYS refer to the User Guide booklet before continuing) :-

- 1.- Swing the handle up into position and affix in place using the thumbscrew.
- 2.- Remove the transport caps from both the water inlet connector and the high pressure hose connection.
- 3.- Connect the water supply hose and the high pressure water hose to the pressure washer. Connect the other end of the high pressure water hose to the washer gun.
- 4.- Connect either the foam nozzle (with cleaning agent tank), or one of the two lances to the washer gun.
- 5.- Only now connect the 13A plug on the mains lead to the mains supply. If you use an extension mains cable to the pressure washer, ensure it is suitable for this purpose (See the User guide).



SAFETY PRECAUTIONS

Release the GUN switch lever, to stop the PRESSURE WASHER.

When using the pressure washer, we recommend you wear safety goggles to guard your eyes from flying debris/water spray.

Caution always switch off the pressure washer and disconnect from the mains, before cleaning the unit, etc. Always switch off the pressure washer before lifting, or carrying it.

WARNING! High Pressure jets can be dangerous. Do not direct the jets at persons, animals, live equipment or the unit itself.

Read all the warnings contained in the USER GUIDE.