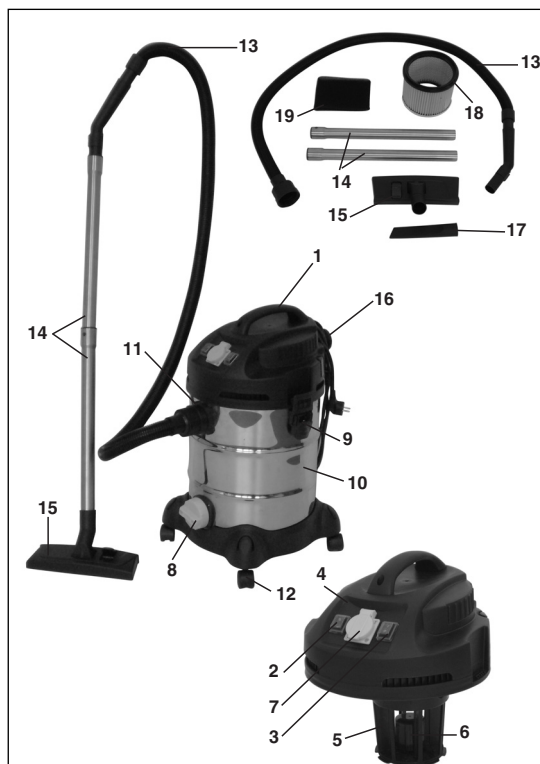




Quick Guide for BT-VC 1500 SA Vacuum Cleaner

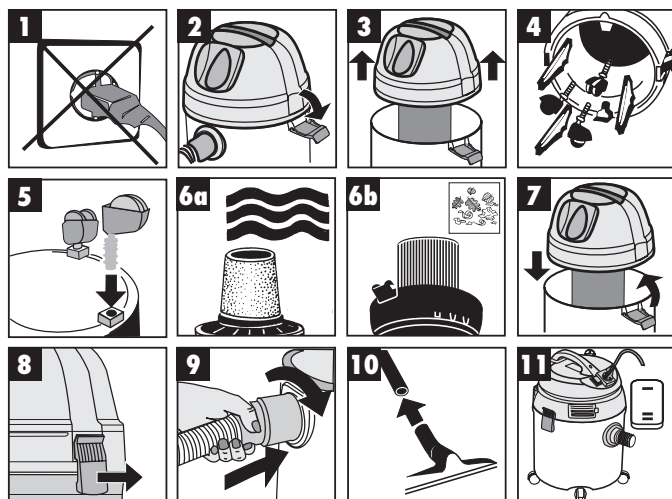
1. Overview

- 1 Handle
- 2 Automatic switch
- 3 ON/OFF switch
- 4 Top section
- 5 Filter basket
- 6 Safety float valve
- 7 Automatic socket-outlet for electric tools
- 8 Water drainage screw
- 9 Clasp
- 10 Container
- 11 Vacuum hose connection
- 12 Rollers
- 13 Flexible vacuum hose
- 14 Tube
- 15 Dual purpose nozzle
- 16 Blow connector
- 17 Crevice nozzle
- 18 Pleated filter
- 19 Foamed plastic filter



**PLEASE READ ALL INSTRUCTIONS BEFORE
USING THE VACUUM CLEANER**

2. Assembly



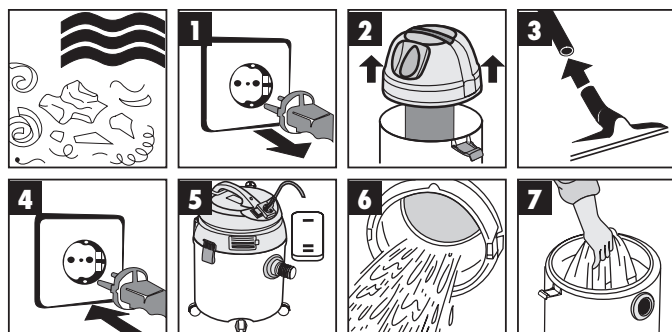
Please note:

Figure 6a:
Use the supplied foamed plastic filter for wet vacuum-cleaning

Figure 6b:
Use the already fitted pleated filter for dry vacuum-cleaning

Figure 11:
Switch position 1: normal mode;
Switch position 2: automatic mode

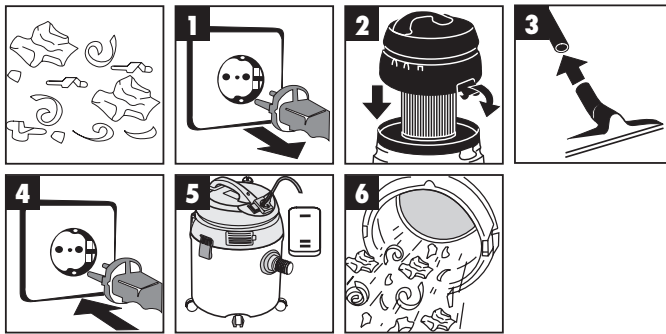
3. Wet vacuum-cleaning



For wet-vacuuming, slip the supplied foamed plastic filter over the filter basket (Figure 2). The pleated filter already fitted upon delivery is not suitable for wet-vacuuming!

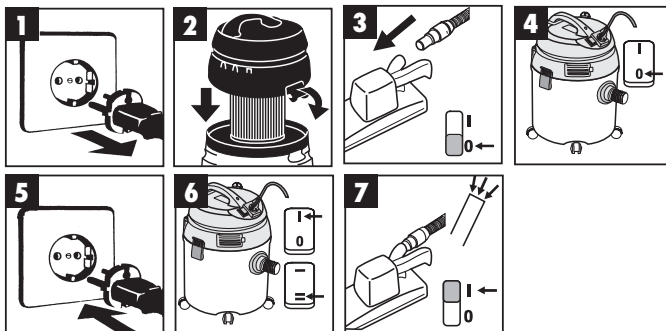
PLEASE READ ALL INSTRUCTIONS BEFORE USING THE VACUUM CLEANER

4. Dry vacuum-cleaning



For dry-vacuuming, slip the pleated filter (Figure 2) onto the filter basket. The pleated filter is suitable for dry-vacuuming only.

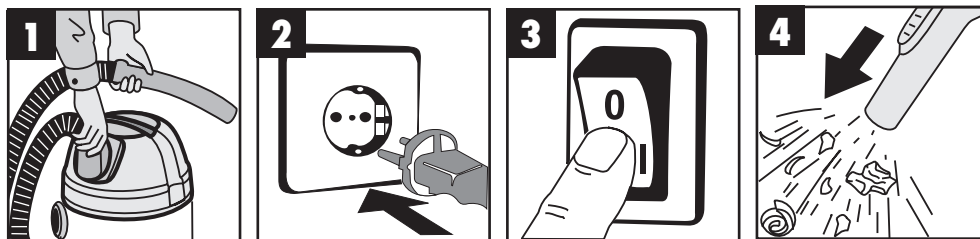
5. Automatic mode with tools



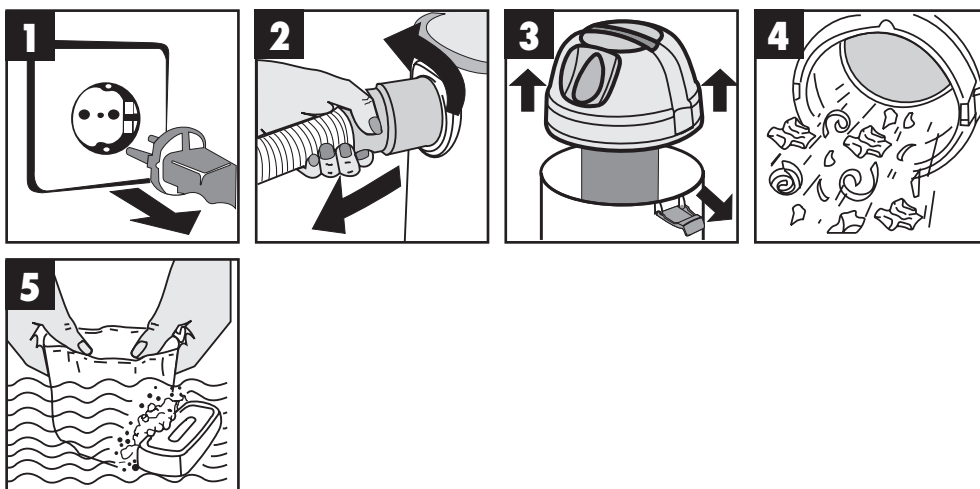
Maximum power outlet 1400 W
 Connect the electric tool to the integrated socket-outlet. Set the ON/OFF switch of the vacuum cleaner to position 1 (Figure 6). The vacuum cleaner will switch on automatically as soon as you switch on the electric tool (Figure 7). When you switch off the electric tool, the vacuum cleaner will also switch off after a pre-set delay.

PLEASE READ ALL INSTRUCTIONS BEFORE USING THE VACUUM CLEANER

6. Blowing



7. Maintenance - cleaning



**PLEASE READ ALL INSTRUCTIONS BEFORE
USING THE VACUUM CLEANER**