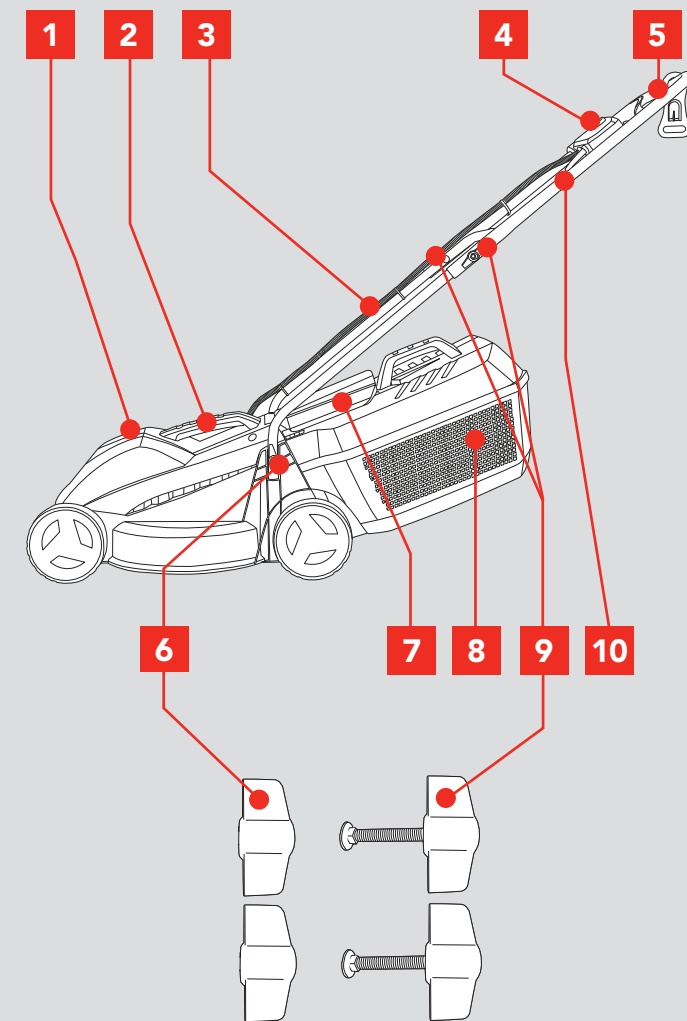


KNOW YOUR PRODUCT

ECOMOW ELECTRIC MOWER

- | | |
|---------------------|------------------------|
| 1. Motor cover | 6. Handle knobs |
| 2. Lifting handle | 7. Grass catcher flap |
| 3. Lower handle | 8. Grass catcher |
| 4. Safety switch | 9. Handle securing set |
| 5. Start/stop lever | 10. Upper handle |



ONLINE MANUAL

Scan this QR Code with your mobile device to take you to the online manual.



SETUP & PREPARATION

1. BEFORE USE

Items Supplied

Please check that the article is complete as specified in the scope of delivery. If parts are missing, please contact our service centre or the sales outlet where you made your purchase at the latest within 5 working days after purchasing the product and upon presentation of a valid bill of purchase. Also, refer to the warranty table in the service information at the end of the operating instructions.

- Open the packaging and take out the equipment with care.
- Remove the packaging material and any packaging and/or transportation braces (if available).
- Check to see if all items are supplied.
- Inspect the equipment and accessories for transport damage.
- If possible, please keep the packaging until the end of the guarantee period.

Danger!

The equipment and packaging material are not toys. Do not let children play with plastic bags, foils or small parts. There is a danger of swallowing or suffocating!

Proper Use

The lawn mower is intended for private use i.e. for use in home and gardening environments.

Private use of the lawn mower refers an annual operating time generally not exceeding that of 50 hours, during which time the machine is primarily used to maintain small-scale, residential lawns and home/hobby gardens. Public facilities, sporting halls, and agricultural/forestry applications are excluded.

Important. Due to the high risk of bodily injury to the user, the lawn mower may not be used to trim bushes, hedges or shrubs, to cut scaling vegetation, planted roofs, or balcony-grown grass, to clean (suck up) dirt and debris off walkways, or to chop up tree or hedge clippings. Moreover, the lawn mower may not be used as a power cultivator to level out high areas such as molehills.

For safety reasons, the lawn mower may not be used as a drive unit for other work tools or toolkits of any kind, unless they have been expressly permitted by the manufacturer.

The equipment is to be used only for its prescribed purpose. Any other use is deemed to be a case of misuse. The user / operator and not the manufacturer will be liable for any damage or injuries of any kind caused as a result of this.

Please note that our equipment has not been designed for use in commercial, trade or industrial applications. Our warranty will be voided if the machine is used in commercial, trade or industrial businesses or for equivalent purposes.

Caution!

Residual risks

Even if you use this electric power tool in accordance with instructions, certain residual risks cannot be ruled out. The following hazards may arise in connection with the equipment's construction and layout:

1. Lung damage if no suitable protective dust mask is used.
2. Damage to hearing if no suitable ear protection is used.
3. Health damage caused by hand-arm vibrations if the equipment is used over a prolonged period or is not properly guided and maintained.

Warning!

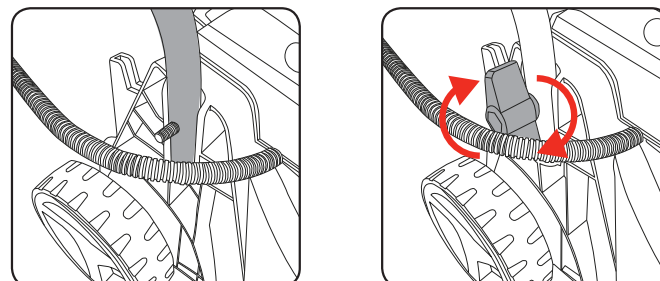
This equipment generates an electromagnetic field during operation. Under certain circumstances this field may actively or passively impede medical implants. To reduce the risk of serious or fatal injuries, we recommend persons with medical implants to consult their doctor and the manufacturer of the medical implant prior to using the equipment.

2. ASSEMBLY

WARNING! ENSURE THE TOOL IS DISCONNECTED FROM THE POWER SUPPLY BEFORE ASSEMBLY.

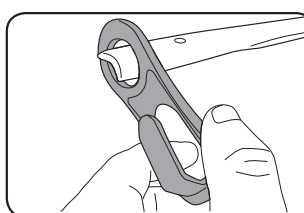
Fitting the Lower Handle to Mower Body

1. Fit the lower handle onto the threaded ends.
2. Fit and secure in place with the lower handle knobs.

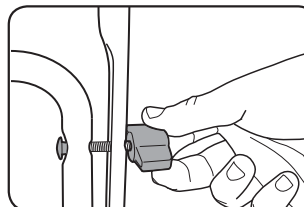


Fitting the Upper Handle to the Lower Handle

1. First fit the cord retainer, slide it over the upper handle end before fixing the upper handle to the lower handles.

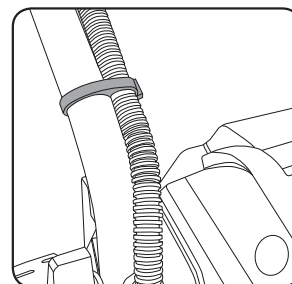


2. Place the upper handle over the upper ends of the lower handle. From the handle securing set, fit the bolts through the inner side of the lower handle and then through the holes in the upper handle. Secure in place by screwing the handle securing knobs over the protruding ends of the bolts.



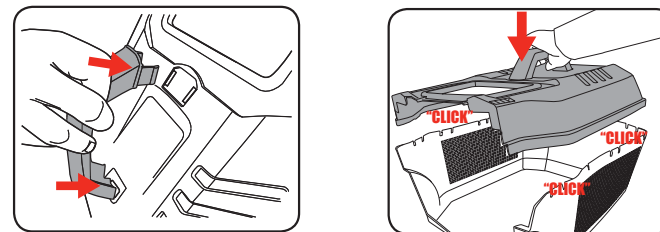
Securing the Power Cord to the Handles

1. Secure the power cord from the switch housing to the mower using cable ties (supplied).



Assembling the Grass Catcher

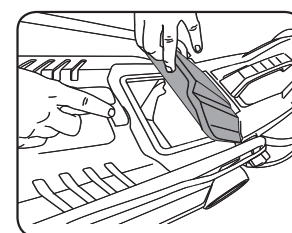
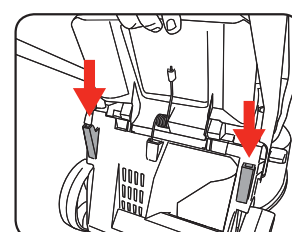
1. Assemble the grass catcher handle onto the opening on the top half of the grass catcher. The handle will click into position when aligned and fitted correctly.
2. To assemble the grass catcher align the two halves and push them together, one side at a time. Ensure the two halves click together around the entire middle section.



Fitting and Removing Grass Catcher

The catcher must be attached to the two raised hooks on the mower.

1. Lift up the catcher flap with one hand and guide the catcher over the two hooks on the mower housing.
2. Lower the grass catcher in place and lower the catcher flap. The catcher flap is held against the grass catcher by a spring.
3. To empty the grass catcher, lift the catcher flap with one hand then lift the grass catcher with the other hand up off the two raised housing clips.



WARNING! WHEN ASSEMBLING THE GRASS CATCHER BACK TO THE MOWER AFTER EMPTYING, ALWAYS ENSURE THERE IS NO BUILD UP OF GRASS IN THE GRASS CHUTE. IF NEEDING TO CLEAR THE GRASS, ALWAYS ENSURE THE MOWER IS DISCONNECTED FROM THE POWER SUPPLY PRIOR TO CLEARING. A BUILD UP OF GRASS IN THE GRASS CHUTE MAY PREVENT GRASS FROM MOVING INTO THE GRASS CATCHER EFFECTIVELY.

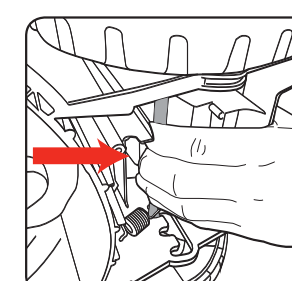
3. ADJUSTMENTS

Cutting Height Adjustment

To obtain the desired cutting height, the front and rear axles are repositioned on the underside of the mower housing.

WARNING! DISCONNECT THE MOWER FROM THE POWER SUPPLY AND ENSURE THE BLADE HAS STOPPED COASTING BEFORE ADJUSTING THE HEIGHT.

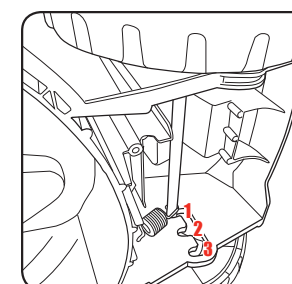
1. Place the mower on its side.
2. Pull the wheel axle towards the front of the mower.
3. Locate the wheel axle into the desired cutting height adjustment position.



Note: Make sure that front, back, left & right wheels are located in the same cutting height adjustment position.

Cutting Height Positions

- 1 - 30mm (lowest).
- 2 - 50mm.
- 3 - 70mm (highest).



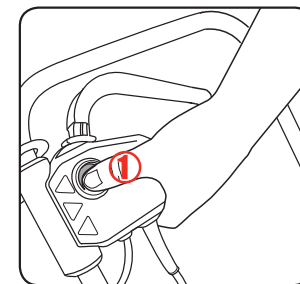
OPERATION

4. SWITCHING ON/OFF

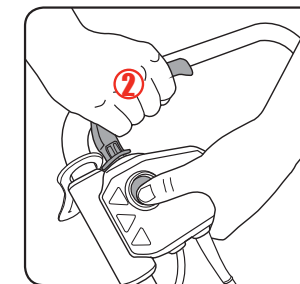
CAUTION! TO REDUCE THE RISK OF ELECTRICAL SHOCK, WE RECOMMEND THE USE OF A RESIDUAL CURRENT DEVICE (RATED 30mA OR LESS).

To prevent accidental start up of the motor the mower is fitted with a dual action switch

1. Press and hold the lock-off button.



2. Pull the Start/stop lever towards the handle and hold in position, the motor will now start.



3. Release the lock-off button

4. Release the Start/stop lever to stop the mower.

WARNING! THE BLADE WILL STOP A FEW SECONDS AFTER THE SWITCH HAS BEEN RELEASED. BE AWARE OF THE NECESSARY TIME IT TAKES FOR THE BLADE TO STOP. DO NOT ATTEMPT TO STOP THE BLADE.

Overload Protection

The mower has an internal cut off switch which will stop the operation of the motor temporarily if too high in temperature. This cut off switch will suddenly stop the motor from operating should the motor become too hot during the operation of the mower.

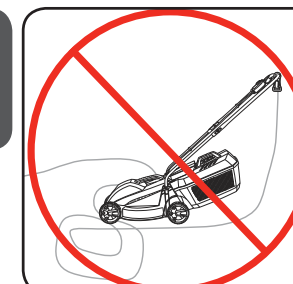
First disconnect the mower from the power supply and inspect blade for any obstructions.

A wait of 10 minutes in cooling time, or longer depending on ambient temperature and the operation being performed, before switching On the mower and resuming normal operation.

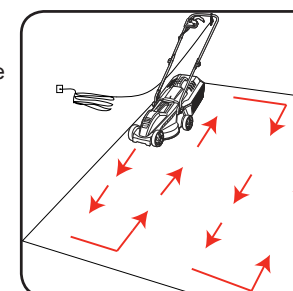
5. HOW TO MOW

- Always use an approved extension lead suitable for power input of this tool.
- Heavy duty power leads recommended not exceeding 25m.
- While using your lawn mower always wear substantial footwear and long trousers.
- Make sure the lawn is clear of sticks, stones, wire and debris; they could be thrown by the blade.
- Before using the lawn mower and after any impact, check for signs of wear or damage and repair as necessary.
- Replace a worn or damaged blade together with the blade bolt to preserve balance.

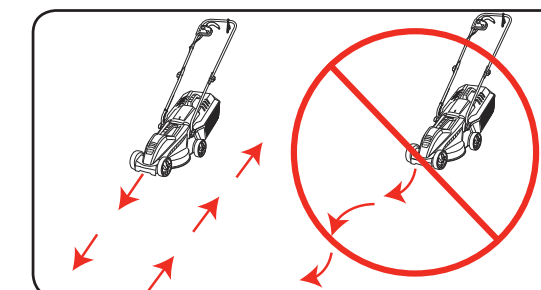
WARNING! KEEP POWER CORD AWAY FROM BLADES.



Start mowing the edge of the lawn nearest to the power point so the lead is laid out on the lawn you have already cut.



For optimum grass collection, always mow in a straight line; do not swing the lawn mower from side to side.



Do Not Overload the Mower

Mowing long thick grass may cause the motor speed to drop; you will hear a change in the motor sound. If the motor speed drops you may overload your lawn mower, which may cause damage. When mowing in long thick grass first cut with the cutting height set in the highest position, this will help reduce the load.