

Einhell®

NEW GENERATION

The little power station for your home!

Tank capacity 4.2 Litres

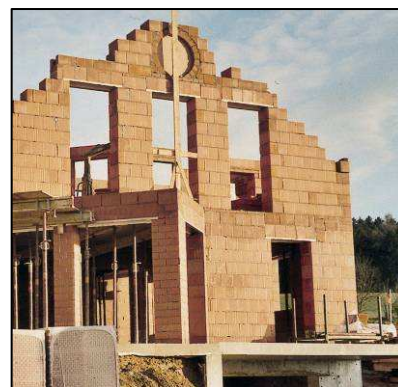


This "power station" supplies energy and provides security. Power will be available whenever it is needed. Power failures or insufficient current supply are no longer a problem; whether during camping, at building sites, in homes or cottages, on boats or in the garden. **This equipment can be used nearly everywhere, and, with its continuous power supply of 650 Watt, provides sufficient power for many applications. The large four-litre tank ensures continuous operation for six hours at 2/3 load.** The power generator is powered by a high-quality 2-stroke engine and is equipped with an overload switch.

Power: 0.95 kW | 1.3 HP



230 V



STE 850 Power Generator

Logistic Information:

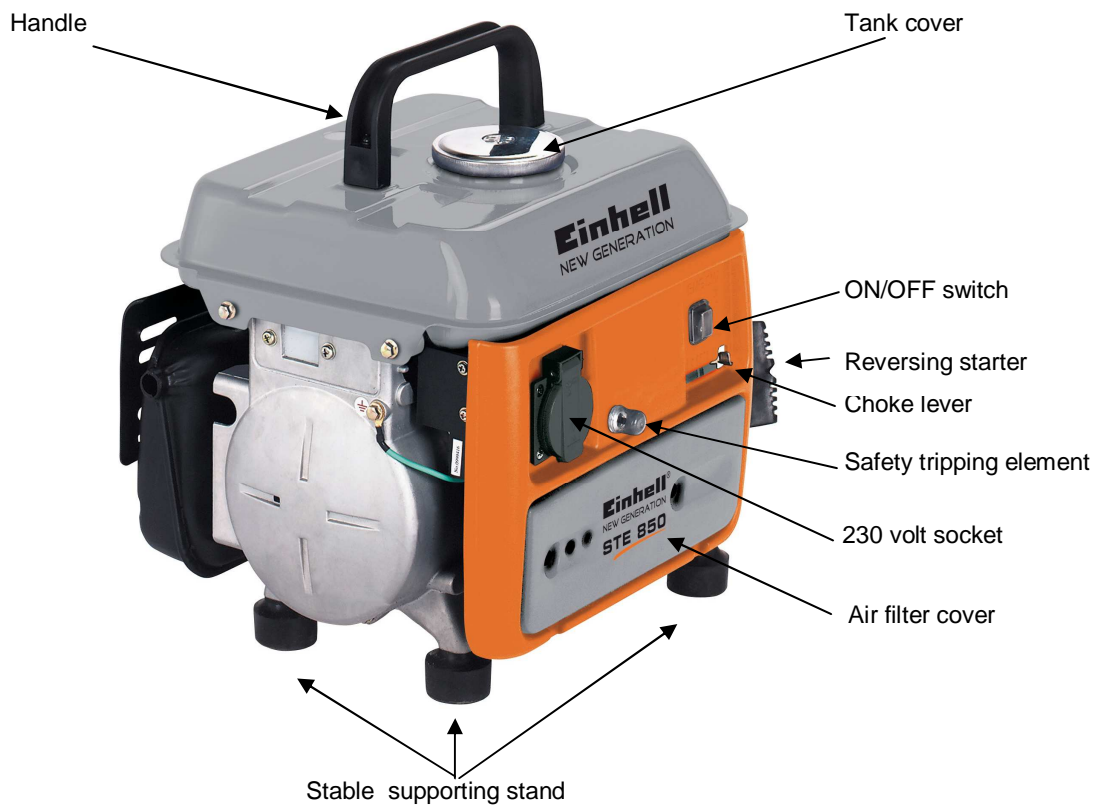
Type:	STE 850	Sales unit:	1pc
Art. No.:	41.512.20	20`:	558 pcs
Ident. No.:	01027	40`:	1,004 pcs
Bar Code:	4006825 512397	40`HC:	-- pcs
Packing:	385 x 330 x 340 mm	Weight:	20.5 kgs (gross)



Einhell®

NEW GENERATION

The little power station for your home!



Features:

- Powerful 2-stroke drive engine
- Large 4-litre tank for continuous operation
- Carrying handle for easy transport
- Stable supporting stand
- Safety tripping element for equipment protection
- ON/OFF switch
- 1x 230 V socket for easy current drain
- Reversing starter to start the machine

Technical Data:

- | | |
|----------------------------|---------------------------------|
| - Generator: | Synchronous |
| - Continuous power: | 650 watts |
| - Max. Power: | 720 watts (S2 15 Min.) |
| - Rated voltage: | 230 V / 1 ~ |
| - Rated current: | 2.8 A / 1 ~ |
| - Frequency: | 50 Hz |
| - Drive engine design: | 1 Cylinder, 2-stroke air-cooled |
| - Displacement: | 63 cm ³ |
| - Max. Power: | 0.95 kW / 1.3 HP |
| - Fuel: | Mixture 1:50 (2%) |
| - Tank capacity: | 4.2 l |
| - Consumption at 2/3 load: | approx. 0.7 l/h |
| - Protection type: | IP 23 |
| - Spark plug: | NGK BPR5ES |

Logistic Information:

Type:	STE 850	Tool:	Power Generator
Art. No.:	41.512.20	Sales unit:	1pc
Ident. No.:	01027	20`:	558 pcs
Bar Code:	4006825 512397	40`:	1,004 pcs
Packing:	385 x 330 x 340 mm	40`HC:	-- pcs
		Weight:	20.5 kgs (gross)

