



PORTABLE COMPRESSOR USER GUIDE

Now you have purchased a Workzone® product you can rest assured in the knowledge that as well as your 3 year parts and labour warranty you have the added peace of mind of dedicated helplines and web support.

AFTER SALES SUPPORT



0151 649 1500



1890 946 244



www.einhell.co.uk

WZK 182

05/2013

Congratulations!

You have made an excellent choice with the purchase of this quality Workzone® product.

By doing so you now have the assurance and peace of mind which comes from purchasing a product that has been manufactured to the highest standards of performance and safety, supported by the high quality standards of ALDI.

We want you to be completely satisfied with your purchase so this Workzone® product is backed by a comprehensive manufacturer's 3 year warranty and an outstanding after sales service through our dedicated Helpline.

We hope you will enjoy using your purchase for many years to come.

If you require technical support or in the unlikely event that your purchase is faulty please telephone our Helpline for immediate assistance. Faulty product claims made within the 3 year warranty period will be repaired or replaced free of charge provided that you have satisfactory proof of purchase (keep your till receipt safe!). This does not affect your statutory rights. However, be aware that the warranty will become null and void if the product is found to have been deliberately damaged, misused or disassembled.

Table of contents

04	Safety information
09	Items supplied
10	Layout
11	Use
12	Before starting the equipment
13	Operation
17	Data
21	Warranty Certificate

Safety information

1

⚠ Caution!

When using equipment, a number of safety precautions must be observed to avoid injuries and damage. Please read the complete operating instructions and safety information with due care. Keep these operating instructions in a safe place so that the information is available at all times. If you give the equipment to any other person, hand over these operating instructions and the safety information as well. We cannot accept any liability for damage or accidents which arise due to failure to follow these instructions and the safety information.

⚠ WARNING

Read all the safety regulations and instructions. Failure to adhere to the safety information and instructions set out below may result in electric shock, fire and/or serious injury.

Keep all the safety information and instructions in a safe place for future use.

⚠ Caution!

The following basic safety actions must be taken when using this compressor in order to protect the user from electric shocks and the risk of injury and fire. Read and follow these instructions before using the equipment.

This equipment is not designed to be used by people (including children) with limited physical, sensory or mental capacities or those with no experience and/or knowledge unless they are supervised by a person who is responsible for their safety or they have received instructions from such a person in to how to use the equipment safely. Children must always be supervised in order to ensure that they do not play with the equipment.

- 1. Keep your work area tidy**
Untidy work areas can result in accidents.
- 2. Check the ambient conditions**
Do not expose the compressor to rain. Never use the compressor in damp or wet locations. Provide good lighting. Do not use the compressor near flammable liquids or gases.
- 3. Protect yourself against electric shocks**
Avoid bodily contact with earthed parts, e.g. pipes, radiators, cookers and refrigerators.
- 4. Keep children away**
Do not allow other persons to touch the compressor or cable, keep them away from your work area.
- 5. Keep your compressor in a safe place**
When not in use store the compressor in a dry, locked room out of children's reach.
- 6. Do not overload your compressor**
It will run better and safer within its quoted capacity range.
- 7. Wear suitable work clothes**
Never wear loose fittings clothes or jewelry. They may get caught in moving parts. Rubber gloves and non-slip shoes are recommended when working outdoors. Wear a hair net if you have long hair.
- 8. Do not use the cable for purposes other than that for which it is designed**
Do not carry the compressor by its cable and do not use the cable to pull the plug out of the socket. Protect the cable from heat, oil and sharp edges.
- 9. Take care of your compressor**
Keep your compressor clean in order to work well and safely. Follow the maintenance instructions. Check the power plug and cable on a regular basis and have them replaced by an authorized specialist if they are damaged. Check the extension cable regularly and replace the cable if damaged.
- 10. Pull out the power plug**
When not in use and before carrying out any maintenance work.
- 11. Avoid unintentional starting**
Make sure that the switch is turned off when connecting to the power supply.

12. When using an extension cable outdoors

Check that it is approved for outdoor duty and is marked accordingly.

13. Be alert at all times

Watch what you are doing. Use common sense when working. Never use the compressor when you are distracted.

14. Check your compressor for damage

Before using the compressor again, carefully check the safety devices and any slightly damaged parts to ensure that they are in good working order. Check that the moving parts are working correctly, that they do not jam, and that no parts are damaged. Make sure that all parts are fitted correctly to ensure that the equipment remains safe to use. Unless otherwise stated in the operating instructions, damaged guards and parts have to be repaired or replaced by a customer service workshop. Damaged switches have to be replaced by a customer service workshop. Never use an electric power tool with a switch that cannot be turned on and off.

15. Important.

For your own safety you must only use the accessories and additional units listed in the operating instructions or recommended or specified by the manufacturer. The use of mounted tools or accessories other than those recommended in the operating instructions may place your personal safety at risk.

16. Repairs

Repairs must be carried out by an approved service centre or qualified electrician.

17. Noise

Wear ear muffs when you use the compressor.

18. Replacing the power cable

To prevent hazards, leave the replacement of damaged power cables strictly to the manufacturer or a qualified electrician.

19. Danger: Do not over inflate

Safety instructions for working with compressed air and blow-out pistols

- The compressor and lines can become very hot during operation. Touching these parts will burn you.
- The gas and steam sucked in by the compressor must be kept free of impurities that could cause fires or explosions in the compressor.
- When releasing the hose coupling, be sure to hold the hose coupling piece with your hand to protect yourself against injury from the rebounding hose.
- Wear safety goggles when working with the blow-out pistol. Foreign bodies or blown off parts can easily cause injuries.
- Do not blow at people with the blow-out pistol and do not clean clothes while being worn.



Note the instructions for use!



Wear ear-muffs!



Beware of electrical voltage!



Beware of hot parts!

Items supplied

2

- Open the packaging and take out the equipment with care.
- Remove the packaging material and any packaging and/or transportation braces (if present).
- Check to see if all the items are supplied.
- Inspect the equipment and accessories for transport damage.
- If possible, keep the packaging until the end of the warranty period.

IMPORTANT

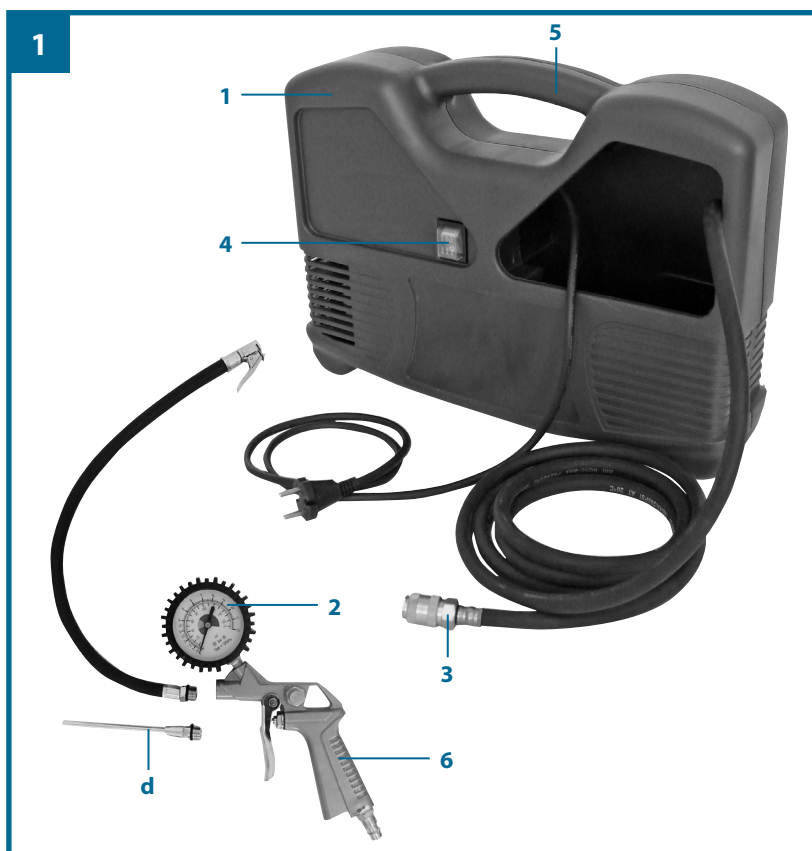
The equipment and packaging material are not toys! Do not let children play with plastic bags, plastic sheets and small parts! There is a risk of choking and suffocating!

- Portable Compressor
- Tyre pressure gauge
- Blow-out adapter
- 8-piece adapter set

Layout

3

1. Housing
2. Pressure gauge
3. Compressed air hose with quick-lock coupling
4. On/Off switch
5. Transport handle
6. Tyre pressure gauge
7. Blow-out adapter



Use



The equipment can be used to supply compressed air to tyre pressure gauges, blow-out pistols, adapters for inflating balls, etc.

The equipment may be used only for the tasks it is designed to handle. Any other use is deemed to be a case of misuse. The user/operator and not the manufacturer will be liable for any damage or injuries of any kind resulting from such misuse.

Please note that our equipment has not been designed for use in commercial, trade or industrial applications. Our warranty will be voided if the equipment is used in commercial, trade or industrial businesses or for equivalent purposes.

Before starting the equipment

5

Notes on installing

- Check the equipment for damage which may have occurred in transit. Report any damage immediately to the transport company which was used to deliver the compressor.
- Install the compressor in the vicinity of the point of consumption.
- Avoid long air lines and supply lines (extension cables).
- Make sure that the intake air is dry and dustfree.
- Do not install the compressor in a damp or wet room.
- The compressor may only be used in suitable rooms (with good ventilation and an ambient temperature from +5 °C to 40 °C). There must be no dust, acids, vapors, explosive gases or inflammable gases in the room.
- The compressor is designed to be used in dry rooms. It is prohibited to use it in damp conditions.
- During operation, place the compressor on the rubber feet on the compressor rear wall.

Mains connection

Before you use the machine, make sure that the mains voltage complies with the specifications on the rating plate. Long supply cables, extensions, cable reels etc. cause a drop in voltage and can impede motor start-up. At low temperatures below +5°C, sluggishness may make starting difficult or impossible.

ON/OFF switch (4)

To switch on the equipment set the On/Off switch (4) to position 1. Move the On/Off switch (4) to position 0 to switch off the equipment.

Important. This equipment is not designed for continuous use.

To prevent the motor from overheating, use the compressor only as follows:

Within an operating period of 10 minutes the equipment is allowed to be operated for only 15% of the time, i.e. 1.5 minutes, at its rated performance level. For the rest of the time the equipment must be allowed to cool down (8.5 minutes cooling phase).

Compressed air hose with quick-lock coupling (3)

Connecting:

Insert the nipple of the air tool into the quick-lock coupling, the sleeve will spring forward automatically.

Disconnecting:

Pull back the sleeve and remove the tool.

Important. When releasing the quick-lock coupling, be sure to hold the coupling piece to protect yourself against injury from the rebounding hose.

Tyre pressure gauge with adapters (Fig. 2/Item 6)

Working pressure in bar: 0-8

Range of applications:

The tyre pressure gauge allows you to inflate car tyres easily and exactly. Use the pressure gauge to check the tyre pressure. If the tyre pressure is too high, you can reduce the pressure with the integrated relief valve (8). The tyre pressure gauge comes with a valve adapter for car tyre valves.

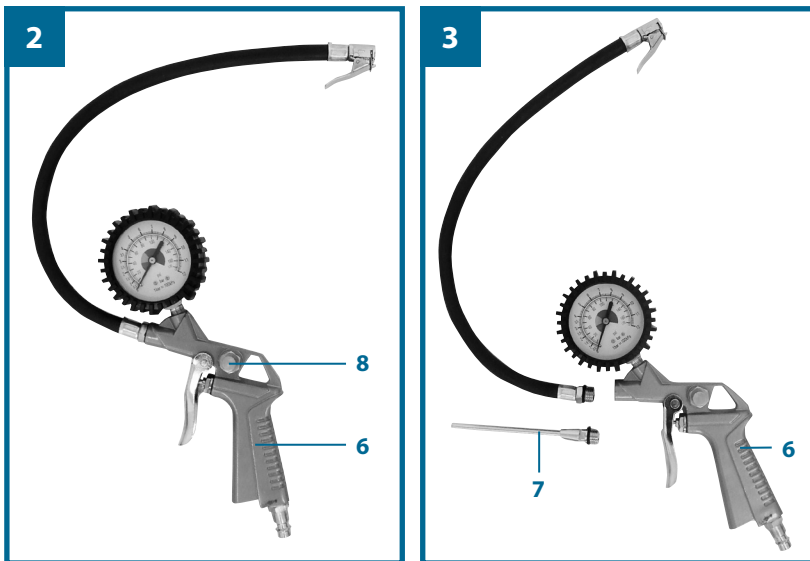
Important! The pressure gauge is not calibrated! Please check the tyre pressure immediately after filling with air, for example at your filling station.

Using the equipment as a blow-out pistol (Fig. 3)

To use the tyre pressure gauge as a blow-out pistol you must first unscrew and remove the hose with the valve adapter for care tyres. Now the blow-out adapter (7) can be screwed to the tyre pressure gauge.

Range of applications:

For cleaning and blowing out hollow spaces or hard-to-reach areas, as well as for cleaning soiled equipment. The infinitely variable trigger lever allows an exact dosing of compressed air.



Instructions for the adapter set

For information on the correct use of the adapters for the various valves, please refer to the following overview.

Ball needle (Figure 4)

Range of applications: For inflating balls.

The ball needle can be used to inflate a variety of different balls.

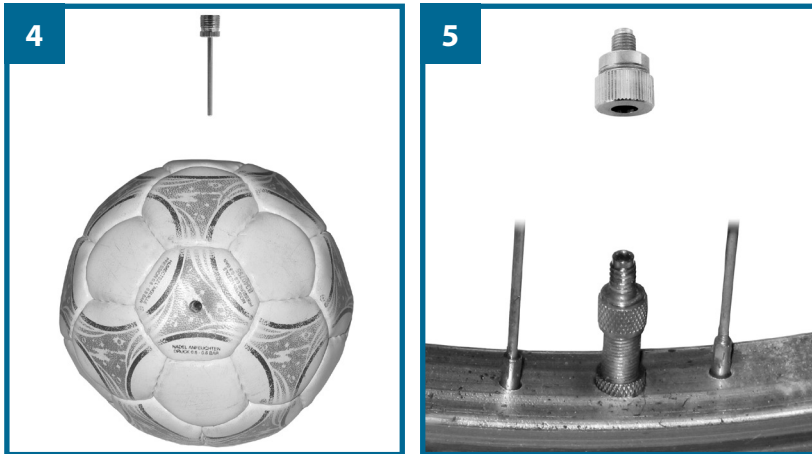
TIP: To avoid damaging the valve, moisten the needle slightly before inserting it.

Valve adapter (Figure 5)

Range of applications: For Dunlop cycle tyre valves.

This Dunlop valve adapter is designed for inflating cycle tyres.

For inflating car tyres, please see the tyre pressure gauge with adapters.



Adapter 3 (Figure 6)

Range of applications: For all valves with an internal diameter of 8 mm or more.

You can use this adapter to inflate airbeds, pools or boats.

TIP: Insert the adapter 3 into the valve as shown in Figure 6, drawing d.

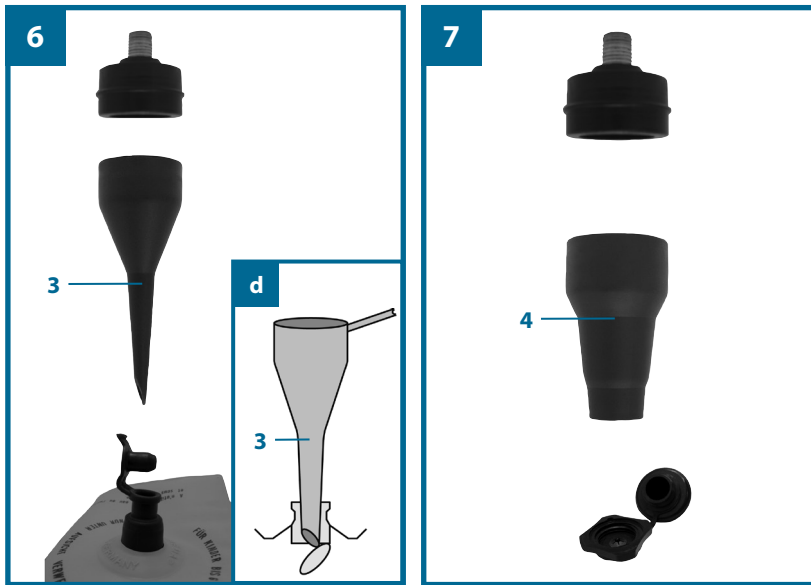
Important!

The valve cap must be opened a little by being pressed together slightly.

Adapter 4 (Figure 7)

Range of applications: For screw valves.

This adapter can be used for all conventional boats, kayaks and other large items such as pools, which are fitted with a screw valve.



Vent adapter (Figure 8)

Range of applications: For deflation valves

You can find a deflation valve combined with other valves (standard valve, screw valve, etc.) on many large articles such as an inflatable mattress.

Conical universal adapter (Figure 9/10)

Range of applications: For inflating airbeds and similar.



⚠ Caution!

Disconnect the power cord before doing any cleaning and maintenance work on the appliance.

⚠ Caution!

Wait until the compressor has completely cooled down. Risk of burns!

⚠ Caution!

Always depressurize the equipment before carrying out any cleaning and maintenance work. To do so, use the tyre pressure gauge as a blow-out pistol and press the trigger lever until no more air escapes.

Cleaning

- Keep the safety devices free of dirt and dust as far as possible. Wipe the equipment with a clean cloth or blow it down with compressed air at low pressure.
- We recommend that you clean the equipment immediately after you use it.
- Clean the equipment regularly with a damp cloth and some soft soap. Do not use cleaning agents or solvents; these may be aggressive to the plastic parts in the equipment. Ensure that no water can get into the interior of the equipment.
- You must disconnect spraying tools from the compressor before cleaning. Do not clean the compressor with water, solvents or the like.

Storage

⚠ Caution!

Pull the mains plug out of the socket and ventilate the appliance and all connected pneumatic tools. Switch off the compressor and make sure that it is secured in such a way that it cannot be started up again by any unauthorized person.

⚠ Caution!

Store the compressor only in a dry location which is not accessible to unauthorized persons. Always store upright, never tilted!

Ordering spare parts

Please provide the following information when ordering spare parts:

- Model/type of unit
- Article number of unit
- ID number of unit
- Spare part number of the required spare part

For our latest prices and information please go to www.isc-gmbh.info

Disposal and recycling

The equipment is supplied in packaging to prevent it from being damaged in transit. The raw materials in this packaging can be reused or recycled. The equipment and its accessories are made of various types of material, such as metal and plastic. Defective components must be disposed of as special waste. Ask your dealer or your local council.

Technical data

Mains connection: 220-240 V ~ 50 Hz
Motor rating kW: 1,1
Operating mode: S3 15% 10 min
Compressor speed min^{-1} : 3550
Operating pressure bar: max. 8
Theoretical suction rate l/min : 180
Sound power level L_{WA} in dB: 94
 K_{WA} uncertainty: 3 dB
Sound pressure level L_{pA} in dB: 83
 K_{pA} uncertainty: 3 dB
Protection type: IP20
Weight of the unit in kg: approx. 6.5

Operating mode S3 - 15% - 10min: S3 = Intermittent mode without influencing the starting process. This means that during a period of 10 min the max. operating time is 15% (1.5 min).

The noise emission values were measured in accordance with ISO 3744.

Possible causes of failure

Problem	Cause	Solution
The compressor does not start	<ol style="list-style-type: none"> 1. No supply voltage 2. Insufficient supply voltage 3. Outside temperature is too low 4. Motor is overheated 	<ol style="list-style-type: none"> 1. Check the cable, power plug, fuse and socket-outlet. 2. Make sure that the extension cable is not too long. Use an extension cable with large enough wires cross-sections. 3. Do not use at an outside temperature below +5° C. 4. Allow the motor to cool down. If necessary, remedy the cause of the overheating.
The compressor starts but there is no pressure	<ol style="list-style-type: none"> 1. The non-return valve has a leak. 2. The seals are damaged. 	<ol style="list-style-type: none"> 1. Replace the non-return valve. 2. Check the seals and have any damaged seals replaced by a service center.
The compressor starts, but the tools do not.	<ol style="list-style-type: none"> 1. Loose hose connections. 2. Leak in a quick-lock coupling. 	<ol style="list-style-type: none"> 1. Check the compressed air hose and tools and replace if necessary. 2. Check the quick-lock coupling and replace if necessary.

Spare parts list

WZK 182 • Art.-No.: 40.205.49 • ID-No.: 11012

Item	Description	Spare part number
06	Tyre pressure gauge (incl. hose and blow-out adapter)	402054501001
	8-piece adapter set	402054501002



For EU countries only

Never place electric power tools in your household refuse!

Under European Directive 2002/96/EC concerning old electric and electronic equipment and its implementation in national laws, old electric power tools have to be separated from other waste and disposed of in an environmentally-friendly fashion, e.g. by taking to a recycling depot.

Recycling alternative to return request:

Instead of returning the equipment to the manufacturer, the owner of the electrical equipment is obliged to ensure that the equipment is properly disposed of if relinquishing ownership. The old equipment can be returned to a suitable collection point that will dispose of the equipment in accordance with the national recycling and waste disposal regulations. This does not apply to any accessories or aids without electrical components supplied with the old equipment.

The reprinting or reproduction by any other means, in whole or in part, of documentation and papers accompanying products is permitted only with the express consent of the ISC GmbH.

Subject to technical changes!

Warranty Certificate

8

Dear Customer,

05/2013

All of our products undergo strict quality checks to ensure that they reach you in perfect condition. In the unlikely event that your compressor develops a fault, please contact our service department at the address shown on this warranty card. You can also contact us by telephone using the service number shown below. Please note the following terms under which warranty claims can be made:

1. Our warranty covers only problems caused by material or manufacturing defects, and it is restricted to the rectification of these defects or the replacement of the equipment.

It does not cover replacement work for transport damage, damage caused by failure to follow the assembly and operating instructions, damage through misuse or incorrect applications, damage caused by failure to follow the maintenance and safety instructions, damage resulting from the use of force and external effects, or the normal wear and tear which arises during the proper use of the product.

The warranty is rendered null and void if any attempt is made to tamper with the equipment.

2. No warranty claims will be accepted after the end of the warranty period. This also applies if an on-site service is used.

The warranty is valid for a period of three years starting from the purchase date. Keep your sales receipt in a safe place, as it is your proof of purchase.

Your statutory rights are not affected by this warranty. During the warranty period you can report defective equipment by phone or by writing to the service address below. We will arrange as soon as possible for the defective equipment to be picked up from your address at no charge and will then supply you with a new or repaired replacement free of charge. Of course you can also return the defective equipment to the address below yourself (carriage forward).

Please prepare the equipment for the pick-up service (pack it in the original box or comparable box). You can make the arrangements for the pick-up yourself at the website below.

Please note that you or someone acting on your behalf must be available throughout the pick-up day. Don't forget to specify a pick-up address.

During non-office hours you can leave your phone number and we will call you back on the next work day.

After the warranty period has elapsed you can still send a defective item to the address below for repair. Repairs undertaken after the warranty period has ended will normally incur a charge.

Einhell UK

Unit 5, Morpeth Wharf, Twelve Quays,
Birkenhead, Wirral, CH41 1LF

21

AFTER SALES SUPPORT  0151 649 1500  1890 946 244  www.einhell.co.uk

WZK 182
05/2013

WORKZONE®

PORTABLE COMPRESSOR

IMPORTANT! KEEP THIS FORM SAFE: Only complete and return this form to the address below in the unlikely event of a warranty claim, if you are requested by the manufacturer to return the item for replacement. Then please complete this form and send it together with your receipt (proof of purchase) to the address below.

Your details:

Name _____

Address _____

 _____ E mail _____

Date of purchase* _____

*We recommend you keep the receipt with this warranty card

Location of purchase _____

Description of malfunction:

Return your completed warranty card to:

Einhell UK

Unit 5

Morpeth Wharf, Twelve Quays

Birkenhead





Wirral

CH 41 1LF

sales@einhell.co.uk

technical@einhell.co.uk

AFTER SALES SUPPORT

  0151 649 1500  www.einhell.co.uk
 1890 946 244

WZK 182

05/2013

3

YEAR WARRANTY

22

AFTER SALES SUPPORT   0151 649 1500  1890 946 244  www.einhell.co.uk

WZK 182
05/2013



Konformitätserklärung

- erklärt folgende Konformität gemäß EU-Richtlinie und Normen für Artikel
 explains the following conformity according to EU directives and norms for the following product
 déclare la conformité suivante selon la directive CE et les normes concernant l'article
 dichiara la seguente conformità secondo la direttiva UE e le norme per l'articolo
 verklaart de volgende overeenstemming conform EU richtlijn en normen voor het product
 declara la siguiente conformidad a tenor de la directiva y normas de la UE para el artículo
 declara a seguinte conformidade, de acordo com a directiva CE e normas para o artigo
 attererer følgende overensstemmelse i medfør af EU-direktiv samt standarder for artiklen
 förklarar följande överensstämmelse enl. EU-direktiv och standarder för artikeln
 vakuuttaa, että tuote täyttää EU-direktiivin ja standardien vaatimukset
 tõendab toote vastavust EL direktiivile ja standarditele
 vydává následující prohlášení o shodě podle směrnice EU a norem pro výrobek
 potrjuje sledečo skladnost s smernico EU in standardi za izdelek
 vydáva nasledujúce prehlásenie o zhode podľa smernice EU a noriem pre výrobok
 a cikkekhöz az EU-irányvonal és Normák szerinti a következő konformitást jelenti ki
 deklaruje zgodność wymienionego poniżej artykułu z następującymi normami na podstawie dyrektywy WE.
 денларира съответното съответствие съгласно Директива на ЕС и норми за артикул
 paskaidro šādu atbilstību ES direktīvai un standartiem
 aribūdina šj atitikimą EU reikalavimams ir prekės normoms
 declară următoarea conformitate conform directivei UE și normelor pentru articolul
 δηλώνει την ακόλουθη συμμόρφωση σύμφωνα με την Οδηγία ΕΚ και τα πρότυπα για το προϊόν
 potvrđuje sljedeću usklađenost prema smjernicama EU i normama za artikl
 potvrđuje sljedeću usklađenost prema smjernicama EU i normama za artikl
 potvrđuje sledeću usklađenost prema smernicama EZ i normama za artikal
 следующим удостоверяется, что следующие продукты соответствуют директивам и нормам ЕС
 проголошує про зазначену нижче відповідність виробу директивам та стандартам ЄС на виріб
 ja izjavuva slednata soobrznost согласно EU-директивата и нормите за артикли
 Ürünü ile ilgili AB direktifleri ve normları gereğince aşağıda açıklanan uygunluğu belirtir
 erklærer følgende samsvar i henhold til EU-direktiv og standarder for artikkel
 Lýsir uppfyllingu EU-reglna og annarra staðla vöru

Kompressor WZK 182 (Workzone)

- 87/404/EC_2009/105/EC
 2005/32/EC_2009/125/EC
 2006/95/EC
 2006/28/EC
 2004/108/EC
 2004/22/EC
 1999/5/EC
 97/23/EC
 90/396/EC_2009/142/EC
 89/686/EC_96/58/EC
 2011/65/EC
 2006/42/EC
 Annex IV
 Notified Body:
 Notified Body No.:
 Reg. No.:
 2000/14/EC_2005/88/EC
 Annex V
 Annex VI
 Noise: measured $L_{WA} = 94$ dB (A); guaranteed $L_{WA} = 97$ dB (A)
 $P = 1,1$ kW; $L/D =$ cm
 Notified Body: TÜV Rheinland LGA Products GmbH
 2004/26/EC
 Emission No.:

Standard references: EN 1012-1; EN 60204-1; EN 55014-1; EN 55014-2;
EN 61000-3-2; EN 61000-3-3

Landau/Isar, den 27.08.2012

Weichselgartner/General Manager

Yu Feng Quing/Product-Management

First CE: 12
Art.-No.: 40.205.49 I.-No.: 11012
Subject to change without notice

Archive-File/Record: NAPR007078
Documents registrar: Siegfried Roider
Wiesenweg 22, D-94405 Landau/Isar

EH 11/2012 (01)